



KANE
COUNTY

CULTIVATOR



Promoting sound Public Policy for the future of agriculture in Kane County.

VOLUME 3, ISSUE 1

JUNE, 2007



On June 23, several Farm Bureau Directors will travel to the Kane County Highway Garage and spend the morning properly disposing of used motor oil from local citizens. It will be the 14th year this group has volunteered their time, and in the process, 175,000 gallons of oil and 25,000 filters have been kept out of landfills, streams and groundwater.

Lots of folks talk about cleaning up the environment. Farm Bureau leaders act, for the benefit of all.

Thanks for caring enough to act.

Steve Arnold, Editor

OUR MISSION:

ENHANCE
THE QUALITY OF
LIFE FOR MEMBER
FAMILIES,

PROMOTE
ALL ASPECTS OF
AGRICULTURE AND

ADVOCATE
GOOD STEWARDSHIP
OF OUR LAND AND
RESOURCES.

An estimated crowd of 1,500 Fox Valley residents stopped by Kane County Farm Bureau's 2nd annual Touch-A-Tractor event March 30 & 31 to learn more about agriculture. Events like this help build support for, and communicate the importance of, a prosperous local food and fiber system.



Touch-A-Tractor

The event was also a fitting venue to draw the winner in the Kane County Farm Bureau Foundation's first "Red or Green" Tractor Raffle. The winner, current college student and former Foundation scholarship recipient Dan Hartmann, chose a cash prize to defray his tuition at Iowa State University.

Farmland Forever?



The Kane County Board recognized the importance protecting farmland for posterity when it enacted the Farmland Protection Program Ordinance in 2001. A legislative proposal put forward by Kane County Farm Bureau could help Kane and surrounding counties protect more farmland in cooperation with willing landowners. See page 3 for details.

It's a fact. Kane County farmers led the state in yields of this agricultural crop in 2006, according to the National Agricultural Statistics Service. Be the first public official (elected or appointed at the municipal, township, county or state level) to call our office (630) 584-8660 and identify the crop, and receive a complimentary 5 lb. box of Farm Bureau's delicious seasoned pork chops for summer grilling. Have a great summer!

Farm Bureau's 2007 Farm Bill Priorities

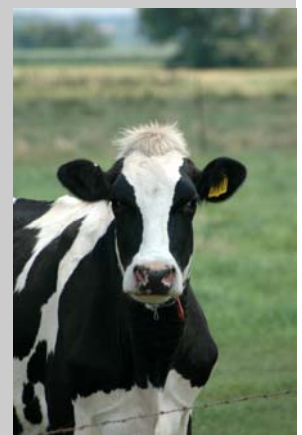
Through three years of member discussion and debate, Farm Bureau has concluded that farmers need and want a 2007 Farm Bill that is WTO compliant, emphasizes conservation, trade and rural development, and provides regulatory relief and a revenue based safety net. In the debate leading up to the authorization of the 2007 Farm Bill, Farm Bureau will seek:

- commodity title funding levels to provide a strong safety net.
- WTO compliance to protect Illinois' \$3 billion export market.
- assurance that conservation payments, publicly funded ag research and rural development programs are WTO compliant.
- to provide a revenues based safety net that protects farmers from weather and market risks.

Save the Date:

The Kishwaukee Dairy Herd Improvement Association will sponsor its second **DeKalb-Kane Dairy Breakfast** from 6-11 a.m. on Saturday, June 16. The Breakfast will again be held at the farm of Dale & Linda Drendel on Walker Road west of Hampshire.

Cost is \$6 for adults and \$3 for kids (6-12). No reservations are necessary. A milking demonstration will take place from 6-7:30 a.m. Call Kane County Farm Bureau, 630 584-8660, if you need directions!



Third "Harvest Evening" Planned for September

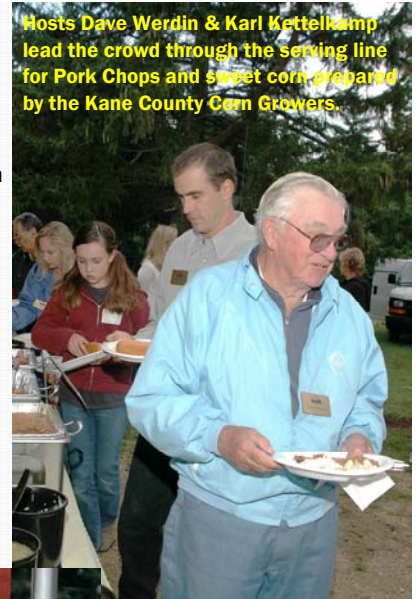
Bureau seeks Farm to host 3rd Annual Program for local policymakers

For the past two years, Kane County Farm Bureau has sponsored a "Harvest Evening on the Farm" for legislators and local government officials. The organization's Governmental Affairs and Public Policy Committee is now planning a third such event, for September 12, 2007.

Public officials at the 2005 and 2006 programs enjoyed the evenings spent visiting with local farmers and specialty crop



(Left) Regional Planning Commissioner Ken Shepro (l) of Wayne and Kane County Board member Jerry Jones (r) of Aurora compare answers in the Harvest Bingo Trivia Contest



Hosts Dave Werrdin & Karl Kettelkamp lead the crowd through the serving line for Pork Chops and sweet corn prepared by the Kane County Corn Growers.

producers on the farms of Alan and Gayle Volpp of Burlington and David and Lynette Werrdin's of Kaneville, respectively. The

evening brings together public officials and FB farmer-leaders to foster a better understanding of the importance of agriculture in our communities and the importance of working together. And no place could be better to have such dialogue than on one of Kane county's picturesque farmsteads!

(Below) Farm Bureau Director Alan Volpp of Burlington takes a turn on the tractor seat, shuttling guests in beneath a covered wagon



from the pasture turned parking lot at the second "Harvest Evening" for local public officials. The Bureau is seeking a farm to host the third annual event this September. Call 630 584-8660 to have your farm considered.



Kane County Board member Barb Wojnicki of St. Charles examines the many Illinois table wines on display at the 2006 Harvest Evening.

Look for the "e" at the pump



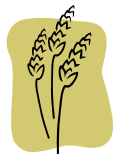
The Illinois Corn Marketing Board, in cooperation with the State of Illinois, Illinois Petroleum Marketers Association, and American Lung Association of Illinois, is bringing a powerful, consumer-focused brand initiative to a gas station near you. This summer, expect to see fueling stations across the state replace their 10% ethanol pump

stickers with this newer, easy to recognize sticker to assist consumers in identifying ethanol enriched fuel at the pump.

The stickers are available to retailers for free and come six to a pack. They can be ordered from the Illinois Corn Marketing Board by calling 309 827-0912 or are available online at www.drivingethanol.org/Illinois

Wheat Harvest Combine Rides

As they have for the past two years, a select group of Kane County farmers are offering legislators and local public officials the opportunity to get a farmer's eye view of harvest. This time it will be wheat harvest (mid-July).



Local public officials who would like to learn more about farm life or just want to experience harvest on the farm, can contact the Kane County Farm Bureau at 630 584-8660. We'll be happy to make arrangements for you to visit a farm in your area, sit in the buddy seat, and who knows, maybe drive the combine.



Expanding Voluntary Farmland Protection?

On a 74-40 vote, a modified Farmland Protection measure, originally drafted at the request of the Kane County Farm Bureau, passed out of the Illinois House on May 3. Republicans Randy Ramey and Patricia Reid-Lindner and Democrat Linda Chapa LaVia were the bills' Chief Sponsors.

In the form the measure was proposed,



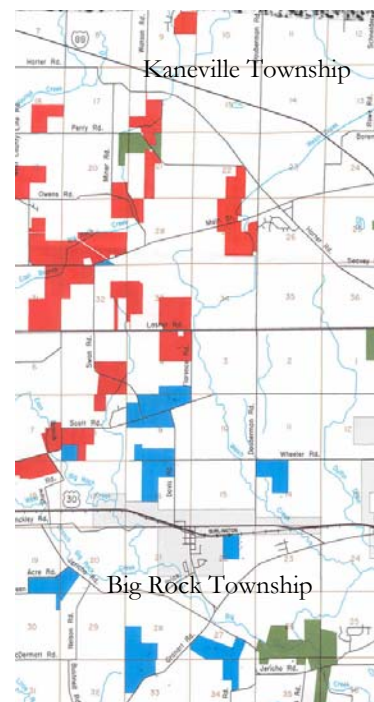
Maintaining a resource base of productive agricultural land for future generations prompted the Kane County Farm Bureau to propose a Farmland Protection funding measure in Illinois' 95th General Assembly. The bill passed the House 74-40 and is now in the Senate.

it would have allowed citizens in any county to petition the County Board to hold a referendum on the question of a tax levy for voluntary farmland protection purposes. As amended and passed by the House, the bill would extend that authority to Kane County only.

Although several counties in Illinois have farmland protection programs, Kane's is the only program that currently has a funding source, that being Riverboat Funds from the Grand Victoria Casino in Elgin. If passed by the General assembly, signed by the Governor and enacted by the voters, this measure would provide additional funds to the County's Farmland Protection efforts, and pave the way for similar efforts in other Illinois counties.

Kane County's Track Record

28 farms protected
3,848 acres of farmland
\$24.75 million expended
\$16.6 million Riverboat Funds
\$ 8.1 million Federal match



Red Protected Farmland
Blue Applied for Protection

Building a Market for Illinois Fiber

Kane County farmer Donna Lehrer launched the Illinois Green Pastures Fiber Cooperative in order to build a market for Illinois fiber and provide an outlet for family farms. In little more than a year, this producer controlled cooperative has grown to 30 farms in throughout Illinois that market fiber through Esther's Place in Big Rock.

The Cooperative is sponsoring "Fleece to Fiber- A Fiber Arts Show" June 16 & 17 at Cantigny Park in Wheaton to showcase artwork containing Illinois-produced fiber. Local artisans will display knitting, weaving, spinning, crocheting,

braiding, felting and rope making from Illinois plant and animal fiber from alpaca and angora to cotton and cashmere. The Grand Prize

winning entry will be displayed in the Washington D.C. office of Secretary of Agriculture Mike Johanns for the next year.



Kane County Teachers Tour 2007



KCFB's 8th "Teachers Tour" will provide an opportunity for K-12 teachers to experience the variety of Kane County agriculture including production, processing, horticultural sciences, engineering, marketing and R&D. Helping teachers grasp the scope and importance of our industry provides the tools they need to relay this information to their classes.

Offered in cooperation with the Kane County Regional Office of Education, the June 11-15 class also qualifies for graduate credit through Aurora University, or continuing education credits. For more information, call 630 584-8660.

Area farmers are invited to have a box lunch in the park with the teachers on Tuesday, June 12 at Seyller Park In Hampshire. To reserve a spot for the 11:30 am lunch, call the Kane County Farm Bureau at 630 584-8660.

Illinois Farm Bureau 2007 State Legislative Priorities

- Seek passage of legislation that provides legal access for 80,000 pound trucks on local roads.
- Seek passage of legislation that limits a landowner's liability when property is used by invited guests for recreational purposes.
- Seek legislation allowing local road jurisdictions to permit the movement of divisible load vehicles hauling production agricultural loads which exceed size or weight limits on posted roads for shipment to or from a specified farm.
- Seek legislative action to make Illinois the top producer of renewable fuels and ensure a direct demand for Illinois grown commodities.
- Support legislation that develops state standards for uniform property tax assessment of wind energy projects. Also create an indemnity fund to help offset the costs of decommissioning a wind power generation installation.
- Support legislation to reform education funding in Illinois that implements the principles of accountability, adequacy, and equity.
- Support legislation to implement fair and equitable assessment of property taxation of non-farm wooded lands being discussed by the Illinois Wooded Land Assessment Task Force created by HJR 95 in 2006.



Racing Against Hunger

Freshman State Senator Michael Noland tosses canned food into his Food Check-Out Day shopping cart at the 6th Annual Shopping Spree in Batavia. Noland, and his competitor State Senator Linda Holmes, collected over \$1,700 in groceries for local food pantries in five minutes!



In six short years, Kane County public officials have collected over \$10,000 in groceries for local food pantries through this Farm Bureau sponsored program.

Of Holy Cows and Farm Burros

At Kane County Farm Bureau, we take member services and public policy concerns seriously, but ourselves, not so much. That may be why we added not one, but two, new "mascots" to the workplace.

Moo-A-Lisa, (lower right) so named in a contest for members last fall, was purchased by a donation to the international humanitarian organization Heifer International at Geneva's 2006 Swedish Days. She began life as part of Chicago's 1999 "Cows on Parade" art exhibit. Moo-A-Lisa now graces the lobby of our building on Randall Road in St. Charles, when she's not out riding on a float or serving as a conversation piece at a trade show or Farm Bureau event.

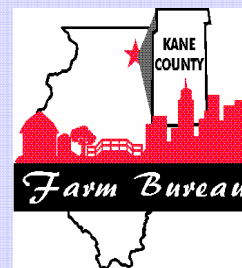
In the fall, she gained a "stable mate". The Kane County Farm BURRO (upper right) was a handmade creation of our office staff for the St. Charles Scarecrow Festival, where it placed third in 2006. A bit messier (all that straw) than the cow, the burro and its driver reside in a shed out back waiting for the 2007 County Fair and the Scarecrow Festival competition.



Kane County Farm BURRO



Moo-A-Lisa



Direct questions, comments about the Cultivator to Kane County Farm Bureau at 630 584-8660 or info@kanecfb.com

Kane County Farm Bureau
2N710 Randall Road
St. Charles, IL 60174