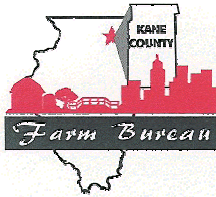


Kane County Farm Bureau Foundation

2008 Report to Donors & Contributors



"FUN"draising

• **Kane County Fair Country Store** The Fair provides the Foundation the opportunity to raise funds and friends by offering unique hand crafted items and farm themed gifts. Buck Bros, Inc. of Hampshire and DeKane Implement of Big Rock cooperate in this effort, allowing the Foundation to sell farm toys on consignment.



• **Bucket Raffles** A second County Fair FUNdraiser, the Foundation holds Bucket Raffles in conjunction with our Farm Zoo and the Country Store. Local businesses donate merchandise, gift certificates, etc. for the raffle. Fairgoers purchase the raffle tickets and place their ticket in the bucket corresponding to the prize they hope to win. Funds raised from this event go towards scholarships and internships for college



students pursuing careers in agricultural fields of study.

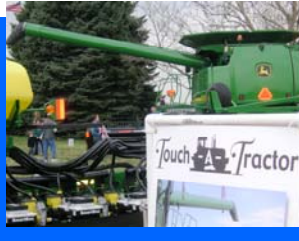
• **John Buck Memorial Golf Outing** Established in 2001 by an endowment in memory of the late John Deere dealer, the proceeds raised from this annual benefit fund John Buck Memorial Scholarships, administered by the Foundation.

• **Farm Bureau dues notices** An agreement between the Foundation and the KCFB allows Farm Bureau members to make contributions to the Foundation along with annual dues to KCFB.

Kane County Farm Bureau Foundation Programs & Activities...

Touch-A-Tractor

This 3rd annual family event took place March 29 -30, 2008 on the lawn of the Kane County Farm



Bureau. Touch-A-Tractor has been a huge success thanks to our many generous volunteers, local farmers who contributed farm equipment and antique tractors and local FFA Chapters.

Touch -A-Tractor helps teach families and especially young children more about agriculture and farming with activities for the whole family. Children could ride a pedal tractor, go to the farm animal zoo, explore the tractors and combines, while adults enjoyed the antique tractors and perused the displays of direct farm marketers. Touch-A-Tractor returns to the KCFB March 29-31, 2009.



Summer Ag Institute

Twenty teachers from local schools participated in the Kane County Farm Bureau's 9th "Agricultural Tour for Teachers," a graduate credit course on agricultural research, inputs, production, processing and marketing. The course is invaluable in helping teachers incorporate agriculture into their classrooms.

With over 30 tour sites and presenters, the one week course provides a broad overview of Kane County farms, commodities and agribusiness. Teachers consistently rate this course as "one of the best I've ever taken!"



Ag Days

In March, over 2,200 fourth grade elementary school students participated in Kane County Farm Bureau's AgDays at Mooseheart. Now in its 24th year, this Women's Committee Program promotes the agricultural industry to students in a fun, educational and exciting way.

Students, most from urban and suburban areas, are able to experience the many facets of agriculture, its importance and how it affects their daily lives. More than 150 volunteers are required to make AgDays a success. The program's longevity and volunteer support are indicative of its importance and the chief reason why the Foundation provides financial support for this effort.



Winner's Choice Tractor Raffle

The first Tractor Raffle helped the Foundation raise nearly \$14,000 in 2007. The 2008 raffle raised nearly \$8,000 and helped increase Foundation Scholarship awards by 50% for local college students. With the unique twist of a choice of a restored antique tractor or a new riding mower, the raffles have been a success in raising funds and friends for the Foundation's scholarship programs.

For 2009, the Foundation has upped the ante and will raffle a new E-85 Chevrolet pick-up truck (or \$20,000 cash!). Get your tickets by calling (630) 584-8660.



Kane County Farm Bureau Foundation Programs & Activities...cont.

Scholarship Programs

The Foundation offers several scholarships to area students. Over \$25,000 in Scholarships and Internships were awarded for the 2007-08 school year.

The John Buck Memorial Scholarship,

in the amount of \$1000, is awarded annually to a student from Kane, DeKalb, McHenry, Boone, DuPage, Will or Lake county pursuing higher education in an agricultural field. The Scholarship was established in 2001 by an endowment in memory of Buck Bros. Inc. founder John Buck by friends and family of the late John Deere dealer.



A 2008 graduate of Somonauk High School, Thomas Warhurst will use the John Buck Scholarship to study ag mechanics at Kishwaukee Community College.

Foundation President's Scholarship,

established in 2006, recognizes the most outstanding applicant among high school seniors seeking to further their education in an agricultural field of study. The award is in the amount of \$2000.



Wayne Gehrke of Elgin, recipient of the 2008-09 Foundation President's Scholarship is attending the University of Illinois majoring in Agronomy.

Foundation General Scholarships,

are awarded to students pursuing higher education for careers in agricultural fields and whose parents have been Kane County Farm Bureau members for at least the past two years. The number of scholarship winners varies based on applications. Each winner will receive a minimum of \$1000.

In 2007-08, nearly \$20,000 in General Scholarships were awarded and over \$75,000 in tuition assistance has been provided by the Foundation in the past five years.



2009 Raffle Grand Prize

Grand Prize: A new E-85 Chevrolet Silverado 4 X 4 Extended Cab pick-up (or \$20,000 cash). Get your ticket today. Call us at (630) 584-8660.

Ag Literacy Programs



The Foundation helps to fund many Kane County Farm Bureau Ag Literacy Programs. The Ag Literacy Library, located in the Farm Bureau, is one example. The Library has books for all ages and interests available for check-out by Farm Bureau members & Kane County teachers.

National Ag-In-The-Classroom Conference

Kane County Farm Bureau Agricultural Literacy Coordinator Suzi Myers, a former teacher, participates annually in the National AITC Conference thanks to the Foundation. Conference tours, workshops, exhibits and contacts help keep local AITC materials and presentations fresh and up-to-date on the latest technology in agriculture.

Bookmark Contest

An annual contest open to all Kane County Fourth Grade school students, it creates an educational awareness of agriculture's importance. Past themes, like 2007's "Baseball & Agriculture", helped students to understand how agriculture makes our National Pastime possible. Winners receive a prize, a classroom visit from Ag Literacy Coordinator Suzi Meyers, and a lesson and party for the entire class, compliments of the Foundation.



U of I Extension Grant

An annual Foundation grant to U of I Extension, Kane County helps fund Extension's 4-H, youth education, food, and nutrition programs.

Internship Programs

Internships are offered by the Kane County Farm Bureau Foundation to students who have completed at least 30 undergraduate hours. Student interns are responsible for many tasks and internships are structured to meet student needs. The Foundation offers summer, winter and mid-term internships.



Kristin McMahon of St. Charles, a graduate of Eastern Illinois University, is the summer 2008 intern for Kane County Farm Bureau

Interns help coordinate Ag-in-the-Classroom projects, county fair activities, media relations and assist in developing grant requests for the Ag Ed program in Kane County, with P.R. efforts, newsletters, press releases and other correspondence.

THE KANE COUNTY FARM BUREAU FOUNDATION WAS ESTABLISHED TO PROMOTE EDUCATION, LEADERSHIP DEVELOPMENT AND RESEARCH IN AGRICULTURAL FIELDS. IN 2007-08, OVER \$25,000 WAS AWARDED IN SCHOLARSHIPS AND INTERNSHIPS TO AREA COLLEGE STUDENTS PURSUING CAREERS IN ONE OF ILLINOIS' LARGEST INDUSTRIES, AGRICULTURE.

Gifts to the KCFB Foundation support local education and leadership development for the future of America's most essential industry, Agriculture!

Thank you for your generosity!

___ \$100 ___ \$75 ___ \$50 ___ \$25 ___ Other

Payment Information - Please make checks payable to:

KCFB Foundation, 2N710 Randall Road, St. Charles, IL 60174

The KCFB Foundation is an IRS 501(c)(5) charitable organization that supports education, leadership development, research and charitable activities for the benefit of agriculture and farm families.