

Kane County Farmer



**KANE COUNTY
FARM BUREAU®**
Farm. Family. Food.™

Enhance the quality of life for member families;
Promote agriculture, farms & food; and,
Advocate good stewardship of our land and resources.

VOL. 84 NO. 2 FEBRUARY 2019

February 25 Shopping Spree to provide hunger relief

On Monday, February 25th, Kane County Farm Bureau will host its 18th annual Food Check-Out "Challenge," a Shopping Spree to benefit local food pantries. The public is invited to come watch State Representative Jeff Keicher and State Senator Donald DeWitte race to collect food to help restock the shelves of two area food pantries. The pantries they have chosen to represent are Hinckley Area Food Pantry and

Tri-Cities Salvation Army in St. Charles, respectively. The contest will once again be held at the Batavia Jewel-Osco, on Randall Road at Main Street at 10:30 am.

Food Check-Out Week teaches Americans how to stretch their grocery dollars with healthy, nutritious food. Typically, consumers spend just 10 percent of their disposable annual income on food. This low number is thanks to the effi-

cient efforts by America's farmers and ranchers, who work hard every day to provide a safe, abundant and affordable food supply.

This year will be the first where an additional emphasis will be made on milk and dairy products. The KCFB Foundation's 10,000 Gallon CHALLENGE will feature prominently. Members are invited out to see the contest and participate in a pre-contest event at 10:20 to

highlight the 10,000 Gallon CHALLENGE.

All of the groceries collected during the 5-minute spree by each contestant will be purchased by the Farm Bureau and donated to the respective pantries. Many State Senators and State Representatives representing Kane County, local Mayors and elected officials have competed in the event, raising thousands of dollars in groceries for local food pantries.

Through this and other KCFB sponsored hunger relief

efforts, including the 10,000 Gallon CHALLENGE, Harvest for ALL and 2013's Million Meal Challenge, KCFB members have donated the equivalent of more than 2 million meals to area food pantries.

Shopping Spree contestants have raised nearly \$40,000 for local food pantries while competing in the Farm Bureau sponsored contest at the Batavia Jewel-Osco. Many organizations have been represented over the years. A list of contestants and beneficiaries is on page 3.

Local food pantries accept 'matching' contributions

The 10,000 Gallon CHALLENGE, officially launched by the KCFB Foundation in November, has successfully raised over 5,000 gallons of milk for 10 local food pantries and the Northern Illinois Food Bank. Created to raise hunger awareness for a much needed, but rarely donated food item, milk, as well as helping to support local dairy farmers, the Campaign is past the halfway mark but needs continuing support to reach the 10,000 Gallon goal.

As promised, the Kane County Farm Bureau has matched the first 1,000 gallons donated. KCFB Foundation Executive Director Steve Arnold also presented checks to seven local food pantries, matching the first 25 gallons of each donation made by KCFB Directors and KCFB Staff. Representatives from several food pantries were invited to attend a January presentation to accept the contributions, totaling well over \$3,000.

KCFB President Joe White presented checks to Rita Burnham, Director, Countryside Food Pantry in Elburn; Nan Long, Director, Hinckley Area Food Pantry; and, Teresa Schryver, Advocacy & Awareness Specialist at Northern Illinois Food Bank. Among other agencies receiving matching funds were St. Peter's Community Food

Pantry, Food for Greater Elgin, Burlington-Hampshire Food Pantry, Batavia and Aurora Interfaith Food Pantries and Holy Angels Food Pantry.

Area food pantry reps attending the presentation not only received much needed funding for milk, but were also provided with bins of promotional materials for collecting additional donations at area businesses.

At the January meeting of the KCFB Board of Directors, President Joe White (l), presented 10,000 Gallon CHALLENGE "matching" donations to local food pantries reps (l-r) Nan Long, Director of the Hinckley Area Food Pantry; Teresa Schryver, Advocacy & Awareness Specialist at the Northern Illinois Food Bank; and, Rita Burnham, Director of the (Elburn) Countryside Food Pantry. Food Pantry/Bank representatives were also provided with bins of promotional materials for collecting additional donations at area businesses.



Right: A happy and busy day for KCFB Manager Steve Arnold as he signs a "score or more" of checks to local food pantries for the 10,000 Gallon CHALLENGE. 100% of the funds from checks to the KCFB Foundation, designated by donors to local food pantries, is passed along with NO administrative fee.



KCFB CALENDAR FEBRUARY 2019

- 7 Board of Directors, 7pm
- 15 KCFB FOUNDATION Scholarship Applications Due
- 19 Water Test Kits Available (through March 1)
- Govt. Affairs Leadership Conference, Springfield
- 20 Puzzle Night
- 21 Ag Committee, County Admn. Bldg., 10am
- 25 Food Check Out Challenge, Jewel-Osco, Batavia, 10:30am
- 26 KCFB Young Farmer Mtg, KCFB, 6:30pm
- 28 Chili & Cornbread Cook-Off, 5:30pm
- 29-30 2019 Illinois Pork Expo, Springfield

FEBRUARY FEATURED PRODUCT Seasoned Pork Chops

Our featured product for this month is Inboden's Meats delicious seasoned pork chops. Each 5 lb. box comes in 8 oz. (10 per box) or 10 oz. (8 per box) and boneless and bone-in varieties. Each chop comes in a vacuum sealed plastic bag. Just thaw, cut it open and you're ready to cook up a perfectly seasoned, thick, juicy pork chop every time. It's a Farm Bureau favorite! Price is (not including tax) \$24.90 per box for members, Non-members pay. \$28.63. Plus Status members always receive a 5% discount on edible products at the Farm Bureau!



For the past 17 years KCFB has sponsored a Food Check-Out Shopping Spree featuring 2 contestants from local government competing against the clock. The event is 5+ minutes of fun, excitement, and a race to collect the most groceries for their designated Food Pantry. Each contestant is awarded a traveling trophy to display in their respective office for the year, showcasing their participation. Pictured above are 2018 participants. A list of contestants and beneficiaries is on page 3.

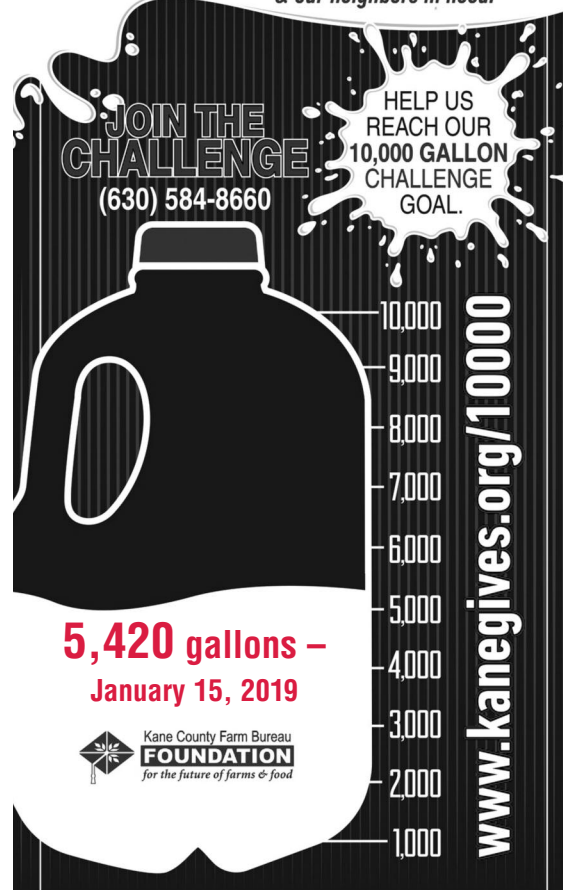


10,000 GALLON CHALLENGE

Support local farms & our neighbors in need.

Contributions as of January 15 totaled 5,420 gallons of milk committed to the Northern Illinois Food Bank and/or area food pantries - including pledges for matching contributions! To join us on our way to our 10,000 gallon goal, visit www.kanegives.org/10000.

A "progress" sign replica of this graphic will be erected on Randall Road in front of the Kane County Farm Bureau so motorists and the community can track our progress. For a form to "match" contributions from a group or club you belong to, or to challenge other groups or organizations, contact the Kane County Farm Bureau at 630-584-8660.



Think blue - February's Farm Toy is on - page 7

KCFB Board Report–December 2018

The December meeting of the Kane County Farm Bureau Board was held on Thursday the 13th with 13 Directors present. With uncertainty in the financial markets, the first order of business was a market update and future market conditions outlook from an area financial advisor who discussed market volatility, organizational assets and individual stocks.

Directors reviewed contracts and agreements including reimbursement for expenses incurred in constructing a woodchip bioreactor to track nutrient losses and invoices for the provision of an intern to work with the County of Kane in the areas of farmland protection and local foods. They also received information on the Specialty Crops, Agri-Tourism & Organic Conference in Springfield;

reports and feedback from KCFB's 2017-2018 Annual Reports of Activities to Illinois Farm Bureau; and, a "What a Great Idea" book of program ideas from CFB's.

Directors' monthly reports included discussion of food labels, the state of the dairy industry, and the IFB Annual Meeting in Chicago. In Unfinished Business, a Resolution on Charitable Contributions was approved to allow the organization to support specific farm related causes and not-for-profits.

In New Business, an Agreement to allow the KCFB to serve as Agent for the collection of contributions to the KCFB Foundation was approved. Directors revised policies for use of Meeting Rooms and discussed recommended "Action

Priorities" for the Illinois Farm Bureau for 2019.

The Nominating Committee will be present for the January 3 meeting to interview potential candidates for the Board of Directors. A proposed budget will be delivered in February. Also discussed were potential capital improvements, and needs in Programming and Staffing.

Arnold gave a report on KCFB's Membership History and circulated the *Kane County Farmer* 2019 production calendar.

The IAA Annual Meeting was held at the Palmer House, Chicago, December 1-4. Reports were given by attendees as well as Delegates. Beth Gehrke received the Ag-in-the-Classroom Volunteer of the Year award, Carolyn Gehrke participated in the Young Leaders Discussion Meet, and Kane County was well represented in the Taste of Illinois by suppliers Foxtrot Organic Farm, Garlic Breath Farm, and Big Rock Organics. CFB Awards received included the New Horizon Award for the 2nd year straight, given this year for Pillow Pet Fundraising and (2) MOPS (Most Outstanding Projects) for Pillow Pets Fundraising and

Farm & Food Trivia Giant Jenga Game. Awards and rankings for the Annual Reports of Activities to IFB (MAPS) for the 2017-2018 program year were presented.

In Local Issues, Directors heard reports from recent meetings of the Kane County Board, Forest Preserve District, Agriculture Committee & Stormwater TAC. No reports were given from the Farmland Protection Commission, the Zoning Board of Appeals, or the Regional Planning Commission.

Directors White, Gehrke, Pitstick, and Kenyon along with Manager Arnold are registered for the AFBF Annual Meeting in New Orleans, January 12-16.

The Marketing Report included circulated resource

guides for CAFO's – Swine, Beef, and Dairy. The Governmental Affairs report recapped the IFB Action Request for the Farm Bill in lame duck session. 1490 members made 5,000 contacts. Special thanks to Craig Bradley, Bill Collins, Beth Engel, Joe Engel, Wayne Gehrke, Chris Gould, Marty Keltner, Karl Kettelkamp, Donna Lehrer, Karen Myer, Jean O'Brien and Keith Sanders for responding. A written Ag-in-the-Classroom report was circulated from Suzi Myers.

In FOUNDATION news, the "31 Days of Christmas" Raffle report was given. Over 2/3 of the available tickets had been issued. "Winner's Choice 2019" (continued on page 8)

On-the-Road seminar

Trucking regulations can be complicated, and farm exemptions compound that problem. Seems everyone has a different answer to your question. Come join farmers from Kane, DeKalb and McHenry counties at 7 p.m. on Monday, March 11 at Joe's Place 19716 E.

Motor vehicle rules for Illinois Farmers

reshaped in recent years with more changes yet to come. Rules recently affected include: farmer exemptions, Harvest Season permit, Electronic Logging Devices (ELDs), waivers for insulin-related diabetic drivers, a new class "C" license plate, Covered

Farm Vehicle options for small trucks, and the UCR payment schedule and fees for 2019.

Presenting the seminar will be Kevin Rund and Kirby Wagner, who specialize in farm transportation issues for the Illinois Farm Bureau® will provide take-home materials covering these topics.

The seminar and pizza buffet are free to KCFB farmer-members courtesy of Kane County Farm Bureau, but advance registration is required. To reserve your spot, please call 630 584-8660 or email steve@kanecfb.com.

Grant Hwy., Marengo, 60152 to find out what you need to know.

Illinois Farm Bureau along with area County Farm Bureaus will be co-hosting a two-hour seminar that focuses on trucking laws – old and new – specifically for farmers. We'll introduce you to new rules, remind you of the old ones that still apply and help you to figure out whether exemptions are available.

Throughout it all, you'll have the chance to ask those farm trucking questions that everyone seems to have an opinion about, but to which no one can agree on an answer.

Trucking laws have been

NOTICE OF ANNUAL MEETING

Notice is hereby given that the 106th Annual Meeting of the Kane County Farm Bureau will be held at the Kane County Farm Bureau, 2N710 Randall Road, St. Charles, IL 60174 on Thursday, April 11th, 2019, at 6:30 pm for the purpose of receiving and acting upon reports of officers, the board of directors, and management for the fiscal year ended December 31st, 2018, and to announce the five directors elected to serve terms of three years to represent Districts 1 through 5, and for transaction of any other business that may properly come before the meeting.

Michael Kenyon,
Secretary

Welcome new members

You receive the *Kane County Farmer* because you are a Farm Bureau member. If you are a farm operator or owner, you benefit from a local, state and national organization committed to agriculture and your way of life.

If you do not have direct ties to farming, your membership helps promote local farms and farming, encourages wise use of our limited natural resources and preserves farmland and our agricultural heritage while allowing you to enjoy COUNTRY insurance and the many benefits of one of Illinois' premier membership organizations.

We appreciate your membership and continued support and we welcome your comments on the content of the *Farmer*. We encourage you to make recommendations about farm, home, food, natural resources, renewable energy or agricultural heritage and history related topics for inclusion in future issues of the *Farmer*.

KANE COUNTY FARM BUREAU BOARD ATTENDANCE JANUARY 2019 THRU DECEMBER 2019

	JAN	FEB	MAR	APR	MAY	JUN	JULY	AUG	SEP	OCT	NOV	DEC
C. BRADLEY	X											
B. COLLINS	X											
C. COLLINS	X											
J. ENGEL	X											
G. GAITSCH	X											
B. GEHRKE	X											
W. KECK												
M. KENYON	X											
K. KETTLEKAMP	X											
D. LEHRER	X											
A. LENKAITIS												
N. LONG	X											
D. PITSTICK	X											
W. SCHNEIDER	X											
J. WHITE	X											

Kane County Farmer

KANE COUNTY FARM BUREAU PUBLISHED MONTHLY

Steven J. Arnold, Editor

Suzi Myers, Ag Literacy Coordinator

Audre Pack, Training Specialist

Elizabeth Polovin, Member Services Coordinator

Marty Keltner, Communications Specialist

OFFICE: Randall Rd. between Routes 64 & 38

Address: 2N710 Randall Rd., St. Charles

PHONE: 630-584-8660

info@kanecfb.com www.kanecfb.com

OFFICE HOURS: 8:30-4:30 Monday through Friday

(USPS No. 289700)

POSTMASTER: Send address changes to Kane County Farmer

2N710 Randall Rd., St. Charles, IL 60174

Periodical Postage • Paid to St. Charles, IL 60174

Year Subscription: \$2.00

■ **DISTRICT 1**
Aurora, Sugar Grove, Big Rock Twnshp.
Nan Long
11461 E. County Line Rd.
Big Rock, IL 60511
815-693-7214

Donna Lehrer
7S027 Jericho Rd.
Big Rock, IL 60511
630-556-3476

William Keck
P.O. Box 281
Sugar Grove, IL 60554
630-466-4668

■ **DISTRICT 2**
Kaneville, Blackberry, Gen./Bat. Twnshp.
Bill Collins
1125 Lewis Rd.
Geneva, IL 60134
630-484-6852

Karl Kettelkamp
OS860 Rowe Rd.
Elburn, IL 60119
630-365-2713

Joe White
President
47W727 Main St. Rd.
Elburn, IL 60119
630-557-2517

■ **DISTRICT 3**
Virgil, Campton, St. Charles Twnshp.
Andrew Lenkaitis
6N707 Corron Rd.
St. Charles, IL 60175
630-513-9980

Chris Collins
1143 Anderson
Elburn, IL 60119
630-934-4642

Dale Pitstick
128 N Hadsall St.
Genoa, IL 60135
630-816-0223

■ **DISTRICT 4**
Burlington, Plato Elgin Twnshp.
Beth Gehrke
12N860 US Hwy. 20
Elgin, IL 60124
847-697-2538

Mike Kenyon
Secretary/Treasurer
1250 E. Main St.
South Elgin, IL 60177
847-741-1818

Craig Bradley
37W791 Orchard Lane
Elgin, IL 60124
847-888-2380

■ **DISTRICT 5**
Hampshire, Rutland, Dundee Twnshp.
Joe Engel
516 Sawgrass Ln.
Hampshire, IL 60140
847-347-5561

Gerald Gaitsch
10613 Brittany Ave.
Huntley, IL 60142
847-669-2003

Wayne Schneider
Vice President
721 Lindsay Lane
West Dundee, IL 60118
847-428-0488

Lunches to Legislators

Would you like to have lunch with an Illinois State Representative or Senator? Kane County Farm Bureau's Lunches to Legislators (L2L) program gives you a chance to do just that! We need volunteers for this annual visit that allows Farm Bureau members to get better acquainted with legislators.

Farm Bureau staff will arrange visits for volunteers to district offices of Kane County's local legislators, (state representatives and state senators) starting at 9am on March 15th. Equipped with boxed lunches, Farm Bureau policy books and farm and food facts literature, they'll express their appreciation for the legislators' hard work.

To volunteer to assist with this program, please fill out the form below and mail to KCFB, 2N710 Randall Rd., St Charles, IL 60174.

Name: _____
 Phone: (_____) _____
 Email Address: _____
 Address: _____
 City: _____ State: _____ Zip Code: _____
 Legislative District: _____
 Congressional District: _____
 Do you have a relationship with a current elected official? If so, whom?: _____
 Are you willing to support Farm Bureau policies on state and national issues? _____
 Please provide a brief description of your agricultural background and views: _____



Beef store is now open!
By appointment only

farmdirect **BLACKANGUS.com**

100% hormone free beef.
Selling individual cuts. Buy as little or as much as you want.

815.895.4691
Mark & Linda Schramer, Owners
8N840 Lakin Road, Maple Park

 **Sample Packs make great gifts!**

10K CHALLENGE milk jugs coming to a location near you!

Be on the look-out, 10,000 Gallon CHALLENGE jugs ready to receive your donations are coming to a local business near you! Volunteers are encouraged to distribute milk jugs around Kane County.

Distributing prepared milk jugs to local businesses is the next step in meeting the goal of 10,000 gallons to be donated to area food pantries and banks. As an important part of our organization, you can help, not only with your donation, but by visiting the Farm Bureau office to pick up and distribute empty milk jugs and additional promo-

KCFB member Dave Ramm (R) stopped by the KCFB office in late December to drop off empty milk jugs and in return, offered to take two prepared jugs out to local food pantries. With help from local community members like Dave, 10,000 Gallon CHALLENGE milk jugs will be available for those who want to make donations locally.

tional materials to businesses you frequent, have a relationship with, or own.

Please call 630-584-8660 for more information or stop by 2N710 Randall Road to pick up your 10,000 Gallon CHALLENGE kit.



Here are the locations you can find collection milk jugs so far:

- DeKane Equipment
47W619 US HWY 30, Big Rock
- Randall's Pancake House
305 S Randall Rd, South Elgin
- Esther's Place
201 Galena St, Big Rock
- Buck Bros Inc.
14N937 US HWY 20, Hampshire
- Salon Urbane
3091 Route 20, #102, Elgin

- Burlington Oasis
125 Plank Rd, Burlington
- Spee-D Mart, Petersen Fuels, Inc.
990 S State Street, Hampshire
- University of Illinois Extension
Office, Kane County
535 Randall Rd, St. Charles

More locations to come in March!

Private well testing program in Feb.

The Kane County Farm Bureau and Kane/DuPage Soil and Water Conservation District are cooperating again to offer a water testing program in February 2019. A high quality water supply is vital for families, and this program helps provide peace of mind and identifies potential problem areas for homeowners of Kane County.

The program works simply as follows:

Step 1. Tuesday, February 19 – Friday, March 1, 2019

Pick up water test kits from the Kane County Farm Bureau, 8:30am-4:30pm or from Kane/DuPage Soil and Water Conservation District, 8am - 4:30pm, M-F. Payment is due for each test kit upon pick-up.

Step 2. Sunday, March 3, 2019

Collect the water sample.
Step 3. Monday, March 4, 2019

Return water sample to Farm Bureau or Kane/DuPage Soil & Water Conservation District.

Costs vary for depending on which tests you have performed on your water. Three kits are available:

A. Basic Package (Nitrate Package) – \$45.00

Tests for nitrate, nitrite, ammonia, chloride, sulfate, soluble phosphorus, silica and specific conductivity.

B. Pesticide Screen – \$80.00

Indicates the presence of triazine herbicides, lasso, dual or harness.

C. Metals – \$95.00

Tests for 23 different metals.

More detailed sampling instructions will be included in each kit and additional information on how each test can help you is provided at the Farm Bureau or Kane/DuPage Soil and Water Conservation's District offices. Testing will be performed by Heidelberg College Water Quality Laboratory in Tiffin, Ohio, a certified lab that has been nationally recognized for its work in testing rivers and lakes, and results are mailed directly to your home. We are able to provide these deeply discounted testing fees because we are providing the laboratory a bulk number to be tested.

Call Kane County Farm Bureau at 630-584-8660 with any questions.

Celebrate National Chili Day and support the KCFB Foundation

Come help the KCFB FOUNDATION celebrate National Chili Day, February 28th, by participating (or sampling) in our 3rd Annual Chili Cook-Off, and the Cornbread competition! Chili judging will be based on ICS criteria: good chili flavor, texture, consistency, blend of spices, aroma and color.

Not a cook but still want to celebrate National Chili Day and enjoy some delicious cornbread?

Stop by the KCFB office for a public tasting at 5:30pm. A \$5 donation will get you 6 tickets and each ticket will get you a Dixie cup of chili or a piece of cornbread. 6 tickets will get you a 9.5 oz bowl of the chili of your choice to enjoy at the event or take home. A "try before you buy" option will provide a small spoon for a "taste of chili". All entry fees and event proceeds benefit the KCFB FOUNDATION in support of agricultural education and college scholarships.

Awards and entries.

A trophy will be awarded to the top creations in the following:

Vegetarian Chili: Chili made using vegetarian or vegan ingredients

Best Cornbread:

Make it sweet, or hot. Any type of cornbread with or without "add-ins"

The judging for the best in each category will begin promptly at 4:30pm by a panel of "celebrity" judges. Winners will be announced at the conclusion of judging. For more information, check out www.Kanecfb.com/Chili.

A People's Choice Chili: will be selected at the end of the night based on the number of tickets collected from event patrons. The chili with the most tickets wins! The People's Choice award winning chili (trophy PLUS braggin' rights) will be announced at the evening's conclusion.

To enter just follow the simple steps below. Prizes will also be awarded for best presentation or theme (plan for 30" of table space) and best recipe card. Multiple recipe cards are encouraged.

2018 "Celebrity" judges and County Board members (L-R, front) Jarett Sanchez, Don Ishmael, and Mike Kenyon, at the 2018 Chili Cook-Off and fundraiser for the KCFB FOUNDATION along with (back) emcee Steve Arnold, KCFB Manager, and Joe White, KCFB President.



Food Check-Out Challenge past contestants

Shopping Spree contestants have raised nearly \$40,000 for local Food Pantries while competing in the Farm Bureau sponsored contest at the Batavia Jewel-Osco. Many organizations have been represented over the years. See story and photo on page 1.

Year	Contestants	Beneficiary
2002	State Senator Chris Lauzen State Rep. Pat Lindner	Holy Angels Food Pantry Aurora Interfaith Food Pantry
2003	U of I Extension Leader Lala Williams Kane Co. Brd. Chairman Mike McCoy	Salvation Army, Elgin Marie Wilkinson Foundation, Aurora
2004	State Senator Steve Rauschenberger State Rep. Linda Chapa LaVia	Salvation Army, Elgin Aurora Interfaith Food Pantry
2005	State Rep. Tim Schmitz State Rep. John Millner	South Elgin Food Pantry Salvation Army, Tri-City Corps
2006	KC Board Chair Karen McConaughay KC State's Attorney John Barsanti	Salvation Army, Tri-City Corps Batavia Interfaith Food Pantry
2007	State Senator Mike Noland State Senator Linda Holmes	PADS of Elgin Wayside Cross Ministries, Aurora
2008	State Rep. Ruth Munson 16th Circuit Judge Patricia Golden	All People's Interfaith Food Pntry., Elgin Community Crisis Ctr., Elgin
2009	State Rep. Keith Farnham State Rep. Kay Hatcher	Centro Informacion, Elgin Batavia Interfaith Food Pantry
2010	State Rep. Randy Ramey State Rep. Sara Feigenholtz	Northern Illinois Food Bank Lakeview Pantry, Chicago
2011	Mayor Tom Weisner Village President Sean Michels	Aurora Interfaith Food Pantry Between Friends Food Pantry, Sugar Grv.
2012	State Rep. Bob Pritchard State Rep. Christine Johnson	Between Friends Food Pantry, Sugar Grv. Burlington-Hampshire Food Pantry
2013	State Treasurer Dan Rutherford State Senator Karen McConaughay	Batavia Interfaith Food Panty Food for Greater Elgin
2014	Mayor Jeff Schielke, Batavia State Rep. Stephanie Kifowit	Batavia Interfaith Food Pantry Marie Wilkinson Food Pantry
2015	State Rep. Keith Wheeler State Rep. Steve Andersson	Elburn Food Pantry Batavia Interfaith Food Pantry
2016	Dr. David Sam, President, ECC T.R. Smith, Chair, KC Ag Cmte.	Spartan Food Pantry Burlington-Hampshire Food Pantry
2017	State Senator Cristina Castro Dr. Christine Sobek, President, WCC	F.I.S.H. Food Pantry, Carpentersville Marie Wilkinson Food Pantry
2018	Jeffrey Walter, Elburn Village Pres. Theresa Barreiro, Kane County Board	Countryside (Elburn) Food Pantry Marie Wilkinson Food Pantry
2019	State Rep. Jeff Keicher State Senator Donald DeWitte	Hinckley Area Food Pantry Tri-Cities Salvation Army, St. Charles

Thanks to our Donors...

The KCFB FOUNDATION offers its sincere appreciation to the following for their contributions to our hunger relief, community service, education, and scholarship programs. Names shown are contributions in excess of \$50 received December 15-January 16, 2019.



**Kane County Farm Bureau
FOUNDATION**
for the future of farms & food

Donor	Beneficiary
The Konen Family Foundation	KCFB Foundation
The Konen Family Foundation	KCFB Foundation, SPROUTS program
Charles & Mary Ellen Heidgen, Batavia	KCFB Foundation
Suzon Scott, Huntley	KCFB Foundation
Heinz Brothers Greenhouse, Jay Schrock, St. Charles	KCFB Foundation
Alice Macha, Joliet	KCFB Foundation

10,000 Gallon CHALLENGE

Joe & Margaret Engel, Hampshire	Burlington/Hampshire Food Pantry
Suzanne Myers, St. Charles	Northern Illinois Food Bank
Gerald Gaitsch, Huntley	Northern Illinois Food Bank
University of Illinois Extension employees, St. Charles	Northern Illinois Food Bank
Kenton Geier & Rosemarie Geier-Grant, Gilberts	Northern Illinois Food Bank
Wayne Schneider & Lisa Geisler, West Dundee	Northern Illinois Food Bank
Jodie Wollnik, Batavia	Northern Illinois Food Bank
Myrna Molina, Aurora	Marie Wilkinson Food Pantry
Elgin United Civic Association, Elgin	Food for Greater Elgin
University of Illinois Extension employees, St. Charles	Hinckley Area Food Pantry

Entry Form (due by February 21st):

Head Cook: _____

Chili/Team Name _____

Type(s) of Chili Homestyle Non Traditional (meat _____)
 Wildlife (meat _____) Vegetarian

Cornbread Free with Chili Entry Cornbread (without chili, \$5 entry)

Address _____ Phone (____) _____

City _____ State _____ Zip _____

Entry fee: \$20.00 (Member) and \$30.00 (Non-Member)

Make checks payable to:
KCFB Foundation. Visa, Discover, or MasterCard accepted in person or over the phone

AG LITERACY CORNER

By Suzi Myers



"Always be on the lookout for the presence of wonder."

—EB White

Those of you who have ever gotten an email from me may have noticed the above quote on the signature line of these emails. This year, I wanted to find a "word of the year" that I could experience and think about throughout the year, instead of making a resolution that would go by the wayside quickly.

The word I decided upon was "wonder". Why? Because I wanted to remind myself of the "I wonder..." of a child's

thoughts. The way a child looks at new ideas or things with such awe and an abundance of the classic questions...the who, what, why, when and how's of their world.

Also, I wanted to be more aware of the "wonders" of the world. There are so many things that can be classified as a wonder. The first one I noticed this year was the abundance of small rainbows I saw scattered throughout my front room that were reflected off a small sun catcher made for me by some special children in my life. I

KANE COUNTY FARMER

took a photo of these little rainbows and sent it to the children so they could be aware of how much I'm enjoying their simple gift. Daily, I am in wonder of these reflections.

Walking outside the other night, just before sunset, a flock of geese flew overhead. This was nothing out of the ordinary, except that the orange of the setting sun was reflected on their breasts...beautiful. In that same category of wonder, I found my first praying mantis egg case on a New Year's Day hike. It wasn't very large, but had the look of a ball of twisted yarn. Hopefully, this summer many of these eggs will hatch.

Some of my favorite wonders throughout the years: the bald eagle soaring through the sky – especially over my own house;

Sandhill Cranes flying high in the sky (noticed by their strange call); snow or ice on the tree branches glistening in the sunlight; a harvest moon; the life cycle of the Monarch Butterfly – ending with the adult flying away from my deck; the beauty of the clouds in the sky as well as sunrises and sunsets; the new experiences as I travel; the germination of a seed; watching the harvest of crops; a newborn baby; water rushing over rocks; waves crashing onto the beach; heart shaped, smooth rocks, or cracked-in-half rocks all shaped by erosion; the sound of penguins walking on tiny rock slivers; spring wildflowers; the cycle of the moon; past cultures' ability to know where the sun would be seen at different times of the year (i.e. Stonehenge); the

differences in each of our four seasons; the list goes on and on.

Though it is still early in the year, I think this will be one New Year's idea that will stay with me until 2020. So far, it has definitely opened my senses to many daily wonders. A new thought, my computer (when it works) is a wonder...just think, I no longer have to retype everything due to a mistake, I can move paragraphs around easily, spell check helps me be a great speller, and I can save the document to be copied or used again years from now...wow, that certainly qualifies my computer for a wonder.

My quest for wonders continues. Wishing you all a Happy Valentines' Day...hey, did you ever wonder how chocolate is made?

Doris Braddock (L), Program Coordinator for 4-H & Youth Development at the University of Illinois Extension office in St. Charles, presents donations collected to Marty Keltner, KCFB Staff member. In lieu of a Christmas gift exchange between fellow employees, \$226.80 was collected for the 10,000 Gallon CHALLENGE, which equals 97 gallons of milk. Thank you, Extension office employees for your generosity!



Book of the month

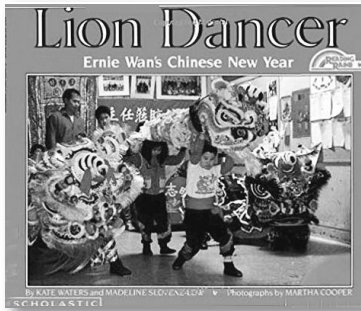
Ever wonder about Chinese New Year and how it is celebrated? Reading this factual story about Ernie Wan will explain many of the traditions of Chinese New Year, as well as other parts of Ernie's life. The story revolves around Ernie's first lion dance through the

streets of New York's Chinatown.

This is a Reading Rainbow book, meaning it was highlighted in the Reading Rainbows television show hosted by LeVar Burton. The show was created to entice children to read. It ran from 1983-2006 and is now available on Netflix.

Come in to borrow this book in our lending library, the idea of Bob Konen and Dean Dunn and supported by funds given by the late Alyce Konen.

Lion Dancer – Ernie Wan's Chinese New Year by Kate Waters and Madeline Slovenz-LOW



Warm up at puzzle night February 20th

Tired of those long winter nights with nothing to do? Do you love the challenge that putting together a puzzle provides?

Come warm up at the Kane County Farm Bureau and help us build a puzzle! We'll provide finger food, the puzzle, hot cocoa, cookies, and fun – you provide the dexterity, mental sharpness, and social banter.

Join us at 6:30 pm, Wednesday, February 20th in the board room of the Kane County Farm Bureau while we put together a 1,000 piece puzzle of a Farmall 560. We'll have it framed, hang it on a wall and use it as part of a future fundraiser for our not-for-profit Kane County Farm Bureau FOUNDATION.

RSVP to Liz or Marty by calling 630-584-8660 or e-mailing info@kanecfb.com by February 18th.



FREE HOT COCOA & COOKIES

Volunteers needed@Ag Days

This March, Kane County Farm Bureau and dozens of Ag Literacy volunteers will organize the 36th annual Ag Days at Mooseheart. Please consider being a part of this great tradition by volunteering your time on either of the days listed below or both!

For more than three decades, hundreds of Kane County 4th grade students have been gathering at Mooseheart Fieldhouse in March to learn about agriculture from farmers and representatives from local agribusinesses. This year's event will take place, March 19-20 and the

Farm Bureau would like your assistance with this Ag in the Classroom event.

Students rotate through a series of more than a dozen presentations on agricultural topics. This is one of the Farm Bureau's longest running and most popular programs. Students will learn about crops, livestock, natural resources, farm machinery and more.

Call 630-584-8660 to sign up for specific dates and times when volunteers are most needed, a continental breakfast and complimentary lunch will be provided both days.

Even the biggest goals start with simple steps



- | | | |
|---|--|--|
|  Bob Effner , CLF®, LUTCF
St. Charles – Elgin
Agency Manager
St. Charles
630-584-0001 |  Bob Kearns
S. Elgin
847-888-3200 |  Bob Riedel
West Dundee
847-428-5434 |
|  Todd Wilcox
St. Charles
630-762-1326 |  Edward Stuehm
Geneva
630-845-8245 |  Gary Bolger
West Dundee
847-531-6110 |
|  Bobbi Boston
St. Charles
630-485-5155 |  Michael O'Brien
Geneva
630-762-0852 |  Sherri Schramer
Elburn
630-365-9500 |
|  Keith Eakins
St. Charles
630-762-1324 |  Vicky Ivanova
Geneva
630-492-5292 |  Dominick Davero
Elburn
630-365-3737 |
|  Kelly Landorf
St. Charles
630-762-1328 |  Mehul Patel
Geneva
630-492-5317 |  Chuck Quick
Hampshire
847-683-2100 |
|  Donna Tonovitz
St. Charles
630-549-7694 |  David Berreles
Geneva
630-492-5320 |  Josh Austin
Hampshire
847-683-2100 |
|  Orazio Difruscolo
St. Charles
630-549-7696 |  Victor Alvarado
Elgin
847-742-0003 |  Dan Cooper
Sugar Grove
630-466-9600 |
|  David Murray
Montgomery
630-897-2364 |  Luke Fawkes
Elgin
847-742-0001 |  Ted Schuster
Sugar Grove
630-466-9600 |
|  Ashraf Geroges
Aurora
630-898-3750 |  Sherry Lochen
Elgin
847-742-0001 |  Sonny Ellen
Sugar Grove
630-466-9600 |

Your help is needed during the following times chaperoning groups of students and teachers or providing 5-minute agricultural lessons.

Tuesday	March 19	8:30am - 12:30pm
Wednesday	March 20	8:30am - 12:30pm



Farm Facts @ Fun

Compiled by Suzi Myers



Sour Cherry Salsa

This spicy-sweet salsa makes a delicious accompaniment to grilled pork, chicken, or duck.

INGREDIENTS

- 2 1/4 cups fresh or frozen pitted sour cherries (3/4 lb)
- 1 tablespoon sugar
- 3 tablespoons finely chopped red onion (1/2 small)
- 1 large fresh jalapeño chili, finely chopped, including seeds (1 1/2 tablespoons)
- 2 tablespoons fresh lime juice
- 1/4 cup chopped fresh cilantro
- 1/2 teaspoon salt



PREPARATION

If using fresh cherries, coarsely chop, then stir together with sugar in a small bowl until sugar is dissolved, about 5 minutes. If using frozen cherries, thaw in a small bowl, reserving any juices in bowl, then coarsely chop and stir together with sugar in same bowl. Stir in onion, jalapeño, lime juice, cilantro, and salt and let stand at room temperature 30 minutes for flavors to develop. Makes about 2 cups

Cooks' note: This salsa is best the day it is made but will keep, covered and chilled, 1 day.

Jokes: What do you call cherries playing the guitar? • *A jam session.*
Did you hear the joke about the cherry? • *It was pit-iful.*
What happens when a cherry tree grows up? • *It blossoms.*

Growing cherries in Illinois

Sour cherries can be grown all over the state of Illinois. Mahaleb is the standard rootstock for sour cherries but the semi-dwarf rootstocks such as Gisela are also becoming more popular. Plant sour cherries in a location with well-drained soil and full sun. Mature sour cherry trees need to be pruned every year. The most common sour cherry disease in Illinois is cherry leaf spot that can be controlled by applying recommended fungicides. Suggested varieties

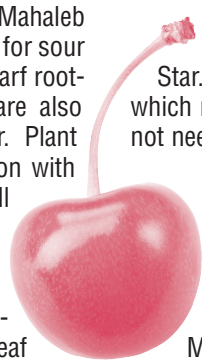
include "Montmorency," "Meteor," "Suda Hardy," "Mesabi," and "North Star." All are called self-fruitful, which means cross-pollination is not needed.

Sweet cherries can be grown in central and southern parts of Illinois. Plant any two or more varieties of sweet cherry for cross-pollination.

Mazzard is the standard rootstocks for sweet cherries but dwarfing rootstocks such as Gisela are also becoming more

popular. Mature sweet cherry trees need to be pruned every year but less severely compared to other fruit trees. The suggested varieties include "Black Tartarian," "Glass," "Ranier," "Stark Gold Yellow," "Stella," "Van," and "Windsor." "Stella" is reported to be self-fruitful and can be planted alone.

Harvest ripe cherry fruits as soon as possible in order to avoid fruit cracking that occur when it rains. Cover cherry trees with nets to protect mature fruits from birds.

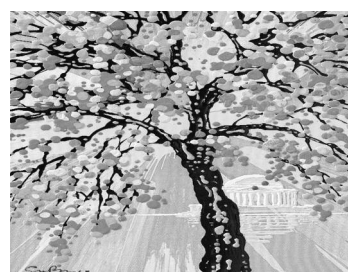


Cherry blossom festivals

The blooming season of cherry blossoms are brief, resulting in instant beauty and immediate death of the flower. They, therefore, serve (within the Japanese culture) as reminders of humanity and mortality since, like cherry blossoms, a human being's life can end at any given moment. The human condition is epitomized through the cherry blossom, alerting people that life is too short to waste away and that people should live life to the fullest.

This idea is tied to Buddhist theme of mindfulness – the practiced ability to live in the present. The life cycle of these flowers make us question why we fail to live life to the fullest, why we

don't spend time with our loved ones, and why we do not take the time to simply pay attention to the living, breathing world



2019 National Cherry Blossom Festival's official artwork, created by Simon Bull.

around us. Cherry blossom festivals are a time to regain our perspective on life, and to make a promise not to take the good things in our lives for granted.

In 1912, Japan gave three thousand cherry trees to Washington D.C., bringing this precious cultural symbol to American soil in an effort to rep-

resent friendship, goodwill, and political alliance. These trees were planted in West Potomac Park by the American First Lady, Helen Taft, and Viscountess Chinda, wife of the Japanese ambassador. There, these two trees still stand, marked by a plaque.

Today, the Washington D.C. National Cherry Blossom Festival is a beloved event in which thousands come to watch these cherry trees blossom into a sea of pink and white in a three-week long cultural festival held throughout the city. The National Park Service oversees the prediction of the peak bloom season by examining the trees and climate conditions, revising their forecast right up until the day of the bloom so that celebrants can arrive at just the right time in order to behold the blooms. This year, the festival will be held March 20-April 14.

Cherries

O P W F N Z Z I Y X W T X U E F Y Z L R L L A C Q
 G K U H R O E X Q B M R N M I I O A D A I L N C F
 K I G S C I T Q B D T F Z A P S M D V B M I I X T
 W K H O R R E G Y T F Y O S D B W I P O E W H M D
 E D P Y P Y N N N L J W C V E I T L S H F D C U Z
 S Z O O O Y E L D I A O U R J S X S X Z O O K E F
 S I T I R H T R A S H O T B E J O O Z Q R O P C G
 K H D T M Y C N H E H S L F L L N N I D Q G O N Y
 T I C X Z M E Z T M F I A L B C I D J T A P T A D
 S W E E T X X T A L Z A P W E N C I B K N X A I U
 I Y P D J B Q R B R X Z T S Q R H G E W J A S L I
 L U Q P M E A F X T E Y S N O W O C K E R U S L Z
 Q X M A H S U L P L V G T S I Z Z M W K M Q I A R
 Y Z V F C G W F H D J V P Q H C Z E G W C X U T I
 H V M H V F C A L T T R W E V T H O D R W X M Z I
 B I I X E Q E V K O L G Q E U Y K M I B A C J Z R
 Y N J T G O N J I V L A Y B P M B F Y M C N G O N
 O P B H Z F K F Z N X M E T M L B S G N I B T L T
 S J D I S I B O R G E M M H B A L A T O N E I E B
 O G C V Y I S A V V H K M F J O C E J I V F E I D
 U C W H N F I D Z L C E G Z T P A P E Z E V H R E
 R C M A E N T U N N C T Z G R B I U J B F V N W T
 B N P A I R Y L S R U Q H Y E D B U I A R S R W Q
 I A N E P A R W F Y Y C K T T O S X Z U N G Z C A
 J Z R O J N W Y Y G C O X P K W L Y T T E P J I N

- | | | | | |
|-------------|------------|----------|------------|------------|
| ALLIANCE | BLOSSOM | GOODWILL | LIFE | RAINIER |
| ANTIOXIDANT | CHERRY | GRANTED | MARASCHINO | SOUR |
| ARTHRITIS | CHINA | HEALTH | MORELLO | SWEET |
| BALATON | FESTIVAL | JAPAN | PIE | TREE |
| BING | FRIENDSHIP | LAMBERT | POTASSIUM | WASHINGTON |

Name _____
 Address _____
 City _____ State _____ Zip _____
 Telephone (____) _____ Email _____ Age _____

Return to: Kane County Farm Bureau, 2N710 Randall Road, St Charles, IL 60174 by February 15, 2019 to be entered in our drawing for a cherry themed prize. Prize must be picked up at the KCFB office.

Handprint cherry tree craft

- Materials needed:**
 Brown tempera paint
 Pink tempera paint
 Paper
 Wine cork or child's thumb for

making cherries
Directions: (activity needs adult supervision)

Paint the hand and bit of forearm of child with brown washable paint. Have child make print of hand and forearm on paper. Wash child's arm and hand. If you are using child's thumb to make the cherries, once the brown paint has dried, let them make pink thumb prints throughout the "tree branches" they have made with their hand print. (If you prefer, these pink circles could be made by using a wine cork or other circular object.)

Let dry and enjoy your child's artwork.



Handprint Cherry Tree Craft

February is ...

- Month-long events:**
 American Heart Month
 An Affair to Remember Month
 Black History Month
 Canned Food Month
 Creative Romance Month
 Great American Pie Month
 National Cherry Month
 National Children's Dental Health Month
 National Grapefruit Month
 National Weddings Month

Daily Holidays, Special and Wacky Days:

- 2 Ground Hog Day
- 3 Superbowl Sunday - Superbowl 53
- 5 Chinese New Year
- 9 National Pizza Day
- 12 Abraham Lincoln's Birthday
- 14 Valentine's Day
- 15 Susan B. Anthony Day
- 17 Random Acts of Kindness Day
- 18 President's Day
- 20 Cherry Pie Day
- 22 George Washington's Birthday
- 24 National Tortilla Chip Day
- 27 Polar Bear Day

Congratulations

Diane Stone from St. Charles! Her name was chosen from the entries received for correctly completing last month's Word Search Puzzle. For her participation, she receives a bag of "OATS" themed products! Thank you, Diane, for reading the *Kane County Farmer* and continue to watch each month for more great opportunities from the Kane County Farm Bureau.

LOVE AND FOOTBALL

By Marty Keltner



February is an important month for love and for football for many of us. Big plans are made for both the Super Bowl and for Valentine's Day, which I now see advertised as "Hearts Day". Whether you are hosting Super Bowl parties and get-togethers or scheduling romantic dinners and weekend get-aways, it's a month with

plenty of excuses to see friends, family and enjoy time with loved ones.

I grew up in the 80's following the Chicago Bears, which meant being a big fan of Walter Payton, Mike Singletary, and William "The Refrigerator" Perry among others. Watching Sunday afternoon football with my dad was definitely a big deal

and I fondly remember the excitement the games provided. I also remember collecting football cards and being so hopeful that each time I opened a pack and threw away the nasty, chalky gum stick, there would be a player I'd recognize, be able to brag about getting, or covet for what the future value might hold. I do still have all of those football cards, so it's possible I could be sitting on a gold mine!

I also remember celebrating Valentine's Day in school was something to look forward to. Elaborately decorating a shoe box for your classmates or crushes to (hopefully) put Valentines into was a must.

Apply for FOUNDATION scholarships by Feb. 15

The Kane County Farm Bureau FOUNDATION is offering several scholarships to members or dependents of members pursuing college degrees. The scholarship application deadline is February 15, 2019.

There are hundreds of careers in the agriculture industry and hundreds of students from Kane County studying in schools across the country to prepare to take the lead in providing food, fiber and fuel for us all.

Applicants may qualify for KCFB General Scholarships,

Ag Scholarships, the KCFB President's Scholarship, Chuck Swanson Memorial Scholarship, the John Buck Memorial Scholarship, the NEWLY created Ruth & Frank Carlson Scholarship, AGCO Platinum Scholarship and/or the AGCO Parts Division/AGCO GWN Scholarships. Applications and details on scholarship requirements are available at www.kanecfb.com and at the KCFB office, 2N710 Randall Road, St. Charles. Call 630-584-8660 with questions.

Find an application for KCFB FOUNDATION Scholarships at www.kanecfb.com. There are approximately 22 million people who work in agriculture related fields. The Agriculture industry offers hundreds of rewarding and challenging careers, with categories including: Agribusiness Management, Agricultural and Natural Resources Communications, Agri-science, Resource Development and Management, Parks, Recreation, and Tourism Resources, Packaging, Horticulture, Forestry, Food Science, and Fisheries/Wildlife.

Previous KCFB FOUNDATION Scholarship winners gather for a photo at an award ceremony at the conclusion of Touch-A-Tractor. The Kane County Farm Bureau FOUNDATION is offering numerous scholarships to members or dependents of members pursuing college degrees in agricultural career fields. The scholarship application deadline is February 15, 2019.



Annual Ag Days teaches 4th graders about farming, where food comes from

Did you know the felt on a pool table comes from a sheep's wool; that crayons can be made from soybeans, and band-aides from corn? Neither do lots of kids. Many also don't realize that food comes from farms, not the store.

A snapshot of farms and farmers will be on display for two days, March 19 & 20, inside the Fieldhouse at Mooseheart Child City & School near Batavia during AG Days. For over three decades

this Kane County Farm Bureau agricultural expo has been helping fourth graders walk away with a better understanding of where their food comes from. Up to 2,000 kids will learn about farm products that go into everything from fuel to clothing, baseball mitts to newspaper print.

It's the perfect time for you, as a Farm Bureau member, to get involved. You can help with activities that are all ready to go - no teaching or farm experi-

ence is needed.

Join us at AG Days March 19 & 20 as a Farm Bureau volunteer. Come from 8:30-noon both days or whichever day you're available.

Farm Bureau is the Fox Valley's largest and oldest agricultural association and the leader in education about farming. We promise you an enjoyable volunteer experience! Call 630-584-8660 with questions or to reserve a volunteer spot.

Whether you're someone who doesn't know a grain bin from an airplane hangar, or you log hundreds of hours in the cab of a combine - you can help Kane County ten-year-olds learn about farming and what it does for the world.

Call 630-584-8660 to learn how.



Photos, left to right:

A class listens intently as a volunteer from Esther's Place in Big Rock shows them the wool collected from their Cheviot sheep. The wool is then carded, dyed, and sold in the store. Items on the table show the students just how versatile wool is: clothing articles, accessories, and "art" that can be made.

The animals featured at Ag Days are always a favorite. Classes never want to miss learning about and petting the sheep and lambs, the Holstein calf, goats, or even chickens. The class shown here pets Jacob's sheep from the Kettelkamp Farm as they learn about the products that sheep provide.

Dan Klein, from Klein's Farm Fresh Vegetable stands, shows one of the students a list of different vegetables and what they do for the body. Dan also talked about what fruits and vegetables professional athletes eat to help them stay healthy and strong. Another fun part of the presentation was showing the students the growth cycle of corn.

Buying little Valentine cards, filling them out, and then secretly putting them into the personalized Valentine boxes was such a big deal. Classrooms were decorated, candy was doled out, cupcakes were baked and distributed, and excitement and anticipation filled the air.

With agriculture in mind, celebrations this month couldn't be made possible without farmers and ranchers. Think of how much food is purchased, prepared, and consumed on Super Bowl Sunday? Or your dinner date with a loved one. Thank a farmer!

American football has a deeply rooted history when it comes to leather, after all, the

first helmets used on the field were made of leather. Also, footballs have traditionally been made using cow hide leather. Since 1941, Chicago's own Horween Leather Company has exclusively supplied the leather used to make the footballs you see being thrown by your favorite quarterback. This arrangement was established by Arnold Horween, who played and coached in the NFL. Thank a rancher!

Hopefully this time of year also conjures up fond memories for you or you set foot into the month ready to make new, treasured memories. Happy Super Bowl Sunday! Happy "Hearts" Day! Happy February!

Touch-A-Tractor seeks tractors of all types, sizes

Kane County Farm Bureau FOUNDATION's 14th annual Touch-A-Tractor will be held Friday - Sunday, April 12-14. NEW this year, the KCFB Foundation invites Farm Bureau members to bring tractors of any size or age to the event. "In the past, we have invited members to only bring antique tractors to the event, relying on only one farmer to bring the modern farm equipment", said KCFB Manager Steve Arnold. "For 2019, we invite members to bring tractors of any size or vintage, as ALL tractors provide a unique experience from a kid's perspective."

KCFB members always bring some farm to the city for this ever-popular event. It is often the first chance for parents and grandparents to get kids out of the house in the spring.

Kids get to touch and even sit in the seats of big, farm machinery they normally only see from

the road. They can participate in hands-on activities, ride pedal tractors, frolic in the corn corral, crawl through culverts, bang on pots and pans, play with toy tractors and farm equipment and see farm animals.

"Area moms tell us their kids ask them to come back year after year" said Arnold. "Be sure to add this event to your 2019 calendar."

Touch-A-Tractor is also the KCFB FOUNDATION's biggest community event and fundraiser. For 2019, Winner's Choice Raffle ticket will get FREE family admission all 3 days, all others will pay \$2 (adult) or \$5 (family) admission. Proceeds from Touch-A-Tractor and the Winner's Choice Raffle benefit the college scholarship and agricultural literacy programs of the not-for-profit Kane County Farm Bureau FOUNDATION.



Touch-A-Tractor - the name says it all! There are dozens of hands-on activities and fun for the family. Come on out to the Farm Bureau to celebrate the coming of spring, April 12-14, 2019.

Support local farms Text FARM to 52886



We offer wet hosing, bulk tank fills and package lubricants - D.E.F, Oil, Hydraulic, Diesel and Gas for all your needs.

We are a 24/7 Fuel Supplier servicing Illinois - Wisconsin - Indiana
Call us today at 847-994-3010 or visit us online at www.luckysenergy.com
Growing To Serve You Better

10,000 Gallon CHALLENGE kits available

Gaining community awareness for our milk campaign is the next step in making sure our goal of donating 10,000 gallons of milk to local food pantries is met. Food pantries have begun to receive donations from our donors and have been so thankful, but there is always more that can be done.

To make it easy for volunteers, members, and concerned citizens of our community to help us promote this campaign, we have created a "counter top kit". This kit includes a prepared

empty milk jug for collecting donations, heavy laminate reversible sign with information about the campaign, and DONOR clings for windows or vehicles, to proudly display your support.

Helping is easy, for those of you with empty, clean milk jugs, please bring them in to our office. We can then "trade" your empty jugs for a "counter top kit" ready for you to drop off at any local business you frequent, have a relationship with, or own.

Please visit our office located at 2N710 Randall Road in St. Charles Mon-Fri, 8:30am-4:30pm to drop off and pick up your 10,000 Gallon CHALLENGE counter top kit.

Edward Stuehm (l) a Representative with COUNTRY Financial in Geneva is shown choosing a milk jug to promote the 10,000 Gallon CHALLENGE. Counter top kits, with pre-prepared donation milk jugs and FREE promotional materials such as laminated reversible signs, DONOR clings, and additional campaign information are available at the Kane County Farm Bureau for community minded businesses and individuals to expand the reach of this campaign to help promote milk consumption, hunger awareness, and support local dairy farmers. You too can help! Stop by the KCFB Office to pick up a kit or call us for more information at 630 584-8660.



Farm toy of the month

Our February toy of the month is blue!

This New Holland T9.700 tractor farm toy represents a 620 horsepower, 154" wheel-base length, 480 gallon fuel capacity, and 44,046 pounds in weight beast of a tractor. It is a 1/64 (approx. 5" long x 3" wide) die-cast metal replica full of power and fun for anyone over the age of 3.

Regular price is \$16.99, Farm Bureau members receive a 20% dis-



count if they bring us an empty, clean milk jug for our 10,000 Gallon CHALLENGE and in turn, take a prepared one to a local business of their choice.

Recruiter of the Month

Each month we honor the person who signs the most members into our organization. This month, the honor goes to Victor Alvarado! Victor has been a COUNTRY Financial Representative since



Victor Alvarado

December of 2017. His office is located at 1750 Grandstand Pl, Ste 20, Elgin. Thank you for your continued support of the Kane County Farm Bureau and congratulations on your success!

What's new in the COUNTRY agencies?

St. Charles Agency, Bob Effner, Agency Manager

CHUCK QUICK has been named the Financial Representative of the Month for DECEMBER 2018 in the St. Charles/Elgin Agency, as announced by Agency Manager, Robert J. Effner, Sr., CLF®, LUTCF. Chuck has provided tangible plans for addressing the immediate and long term insurance needs of his clients through COUNTRY Financial's diverse

products and services: Auto, Farm, Home, Life, Business, Retirement. Let Chuck's expertise help you! You may reach Chuck at 847-683-2100, charles.quick@countryfinancial.com, or https://representatives.countryfinancial.com/charles.quick/. Congratulations, Chuck!

Aurora Agency, Kevin Gomes, Agency Manager

Cornell Shaw, Financial Representative with the Aurora Agency, is our Financial

Representative of the Month for December 2018. Cornell began his career with COUNTRY Financial in August of 2015 and services clients out of his office located at: 1161 Oak Street, North Aurora, 60542-(630) 423-9885. Cornell's professionalism and vast knowledge of auto, home, life, commercial and financial products make him a great person to do business with. Congratulations, Cornell!

Directors attend AFBF meeting

Illinois Farm Bureau® proposals shape American Farm Bureau Federation policy

Voting delegates at the 100TH annual meeting of the American Farm Bureau Federation (AFBF), including 21 delegates from Illinois addressed Illinois Farm Bureau's (IFB) priority issues, including submittals on trade, transportation, legal advocacy and Health Savings Account (HSA) reform.

"Our delegates were instrumental in promoting and debating several key policy resolutions to promote and protect the interests of Illinois Farm Bureau members," said Richard Guebert, Jr., President, IFB.

"We wanted to reaffirm our organization's longstanding trade policy. Delegates approved policy urging trade disputes to be resolved through negotiations - using tariffs or withdrawals from trade agreements as a last resort," Guebert said.

"We were also were success-

ful of the new policy opposing the creation of a federal vehicle mileage tax (VMT) which would tax motorists based upon the number of miles driven," said Guebert.

Illinois delegates also called on the AFBF Board of Directors to develop a national legal advocacy strategy that actively addresses legal or regulatory actions taken by governments, groups, or third parties that impact our members' private property rights and production agriculture.

U.S. President Returns to Convention

On Monday, President Donald Trump spoke to a full house of convention attendees. He kept his promise to return to the convention after last year's appearance in Nashville and was welcomed on stage by AFBF President Sonny Duvall and Secretary of Agriculture Sonny Perdue.

"President Trump returning to the AFBF convention reflects

his interest in farming, and also what rural voters mean to him," said Guebert. "The fact a sitting U.S. President addressed our members two years in a row shows Farm Bureau's impact as an organization. The President called attention to passage of the 2018 Farm Bill, regulatory reform such as the Clean Water Rule proposal, and tax reform."

"He wants to get USMCA passed and wants an agreement with China to help farmers in the long run," said Guebert.

At the meeting, Illinois Farm Bureau received a New Horizon Award for collaborative work on the Illinois Livestock Report. The New Horizon Award honors states with the most innovative new programs. IFB received Excellence awards for Advocacy, Engagement and Outreach, Leadership and Business Development, and Membership Value. Guebert was re-elected for a two year term on the AFBF board representing the Midwest region.



The American Farm Bureau Federation (AFBF) held its annual meeting January 11-15 in New Orleans, Louisiana. Several KCFB Directors were in attendance for the organization's 100th Annual Meeting and Centennial Celebration. The AFBF was organized in 1919 in Chicago. In addition to breakout sessions on numerous farm policy, production and farm management themes, Directors also visited the convention exhibit hall and saw the newest offering from companies serving farmers, as well as the best program ideas from county Farm Bureaus across the nation. A highlight of the conference was an address to attendees from President Donald Trump on Monday, January 14, the second consecutive

year the President has addressed the Convention. Trump touted successes in regulatory reform, tax reform and trade and made his case for a border wall and immigration reform.

KCFB member to travel to Germany for discussions on direct food marketing

As the United States' hunger for locally produced food approaches an annual 9-billion-dollar industry, Secretary of Agriculture Sonny Perdue proclaimed August 5-11 as National Farmers Market Week in 2018. Transatlantic consumers to the east share the growing sentiment, encouraging farmers to invest in direct marketing and value-added initiatives; initiatives that Kane

County farmer Ellen Kamps hopes to glean while visiting Germany in April 2019.

"As a direct to consumer farmer at Foxtrot Organic Farm, we sell 100% of our products within a 5 mile radius," explained Kamps. "There are times when we need to get creative to increase cash flow and minimize waste in our business."

Examples of her value-added products include black garlic, a fermented, shelf-stable version of the allium that sells for \$25 per pound.

The Illinois Farm Bureau has a long-standing relationship with the German American Chamber of Commerce, annually partnering for an international exchange program. The chosen

(continued on page 8)

CLASSIFIED ADS

CLASSIFIED AD RATES
Classified advertising rates: 20 cents per word/\$20 minimum (60 words or less). DISCOUNTS for members: Associate members, 20%; Voting members, 30%; PLUS members, 40%. Advance payment requested. Ads due by the 15th of every month for the next issue. No advertising (classified or display) for financial or insurance services will be accepted. Call 630-584-8660.

SERVICES

Jim Verhaeghe & Sons, Inc. - Tree removal, tree trimming, & stump grinding. Backhoe work & Tile Lines. Fully insured - Free Estimates - Jim Verhaeghe Sr. Call: 847 334 5730.

WANTED

Farm Employee wanted - Kendall County. Experience necessary. Able to obtain CDL. Wage based on experience. Call: 630-554-9238 or 630-951-9238.

CUSTOMER SERVICE POSITION - 30-35 hours weekly, M-F: we do not work on Sundays. Applicant must be computer literate with pleasant phone voice and manner. Some overnight travel required. All applicants must be self-starters and able to work as a team. Office located in St. Charles. Starting, entry level employment offering paid vacation, self-directed savings plan, partial tuition reimbursement. Call Bob to discuss this position. Call: 630-377-5807.

Want to buy vintage & used tools Call Chris - Also, we do cleanouts. Call: 630 550 7182.



Recycle

Scrap for CASH

Steel, Copper, Aluminum & Cars

Trucking & Dumpster Service Available

"Helping to keep America Picked up for 45 years"

Zimmerman Recycling, Inc.
301 Industrial Drive, DeKalb
(815) 756.8600

Young Farmers 'pass the hat' for milk

The Kane County Young Farmers gather each year at a local restaurant to celebrate not only the holidays, but the year they've had and their accomplishments. This year the celebration was held at Sorrento's in Maple Park with 18 Young Farmers in attendance.

Besides getting together socially, an important part of the group dinner is to "pass the hat", a tradition they have upheld for years now. The group

"passes the hat" around the table and each member contributes what they can to a community organization, program, or farm family in need.

Last year, their donations were given to pipeline explosion victims in Dixon, IL. This year, it was collectively decided donations collected would go to support the 10,000 Gallon CHALLENGE, a program created to provide much needed milk and dairy products to local

food pantries and banks, promote milk consumption and support local dairy farmers.

The Young Farmers raised \$655 at the dinner, translating to 280 gallons of milk! The group invites any farmers or those working in agricultural related careers, ages 18-35, to join them at their next gathering, 7:00 pm at the KCFB on February 26. Contact Steve or Marty at the Kane County Farm Bureau, 630-584-8660, for more info.



At left: "Passing the hat", an annual giving tradition of the Kane County Young Farmers, is part of each holiday party the group holds. James Goebbert of Union, IL, shown here, is adding his donation to the hat that Carolyn Gehrke of Elgin, Chairwoman, is holding. This year the group raised \$655, translating to 280 gallons of milk for the 10,000 Gallon CHALLENGE.



At right: Dale Pitstick, Young Farmer and Kane County Farm Bureau Director, "passes the hat" to a fellow Young Farmer at the holiday dinner. The group's annual giving tradition benefits community organizations or farm families in need.

Germany trip

(continued from page 7)

topic this year is direct food marketing, where participants will visit farms and discuss with owners how they market their products, their successful channels, and the experiences they have encountered along the way. American delegates will also learn from German agricultural associations and governmental institutions about the challenges and regulations surrounding global agriculture.

This past November at the IFB's Live Local Conference, German farmers and dignitaries visited Illinois farms where they shared the challenges and successes of direct food marketing. The exchange program gives farmers opportunities to see how another country is addressing the topic, share ideas, and explore similarities and differences.

Kamps will report

on her experience in Germany in an upcoming issue of the Kane County Farmer.



Ellen Kamps

Board report

(continued from page 2)

Raffle tickets are now available.

The P.R./Membership report included 21 donors of the 10,000 Gallon CHALLENGE, October 18th through November 15th.

Reports were given from the elected officials Victory Mixer and the 10,000 Gallon CHALLENGE. It was advised that donations equivalent to 4,179 gallons had been received to

date. The 1,000 gallon match from the Farm Bureau had been met and the management match stands at 125 of 500 offered. The 18th Annual Shopping Spree was discussed for either February 11th or 25th.

Correspondence was circulated from Richard Guebert, President of the IFB - enclosing an IFB 2019 Action Priorities Survey; Ellen Kamps - expressing gratitude for Farm Bureau support in various area in 2018; Georgia Harvell - thanks for the

Blue Ribbon Sale steer purchase; Lauren Lurkins, IFB - reminder of IFB Resource Guides for livestock producers; CAE Department, ASAE - notification of Certified Association Executive credential renewal, Steve Arnold; Garlic Breath Farm - thanks for invitation to Taste of Illinois Event.

The next scheduled Kane County Farm Bureau Board of Directors meeting will be held on Thursday, January 3, 2019, at 7:00pm.

Farm advocates sought

Taking Charge of Change is the theme for the Illinois Farm Bureau's 2019 Governmental Affairs Leadership Conference (GALC). The annual event is an opportunity for members to learn about and advocate for Farm Bureau legislative priorities, and a chance to mix and mingle with state elected officials during an evening legislative reception at the President Abraham Lincoln (DoubleTree) Hotel in Springfield.

If leading your family farm is what you know best - paying bills, making marketing decisions and leaving the farm better for the next generation, then Farm Bureau asks you to

take a greater role in leading for our organization and championing our legislative priorities. Illinois agriculture only remains strong when farmers realize this power and continue "Taking Charge of Change."

Our farmer-members and professional-members will be working with a new Governor, Congress and General Assembly in 2019. We invite any and farmer and professional members to join us in Springfield for this 2019 Governmental Affairs

Leadership Conference. The one-day event will highlight Illinois Farm Bureau legislative priorities, provide insights from nationally recognized speakers and end with a legislative reception with members of the Illinois General Assembly.

The conference is scheduled for Tuesday, February 19 at the President Abraham Lincoln (DoubleTree) Hotel in Springfield. Event details are available at www.ilfb.org/galc. To register, call Kane County Farm Bureau, 630-584-8660 and ask for Steve.

The cost of \$75 will be paid by KCFB for Regular (farmer/farmland owner) and Professional members.



Featured food product • Toys for girls and boys • Chili contest
Puzzle night • Private well and water testing • FOUNDATION Scholarships
There's a lot to love in this month's Farmer

22 lucky winners in this year's '31 Days of Christmas' raffle

The Kane County Farm Bureau FOUNDATION extends its thanks to everyone who purchased and sold tickets for the third "31 Days of Christmas" college scholarship raffle and fundraiser. Raffle proceeds will help provide college scholarship to students pursuing higher education in 2019-2020, toward farm and food related careers.

With roughly 70% of the available tickets purchased, 22 lucky winners had their holiday brightened on 22 different days with gifts ranging from \$168 to \$500 in value. Winners were provided with gift cards to Cabela's for the actual value of the prize won each day, allowing, for example, the winner of a grill to purchase a winch, tree ladder, hunting gear, boots - whatever they would like!

The following had an exact

match to their ticket on the Illinois lottery evening Pick 3 numbers during December: Trish Regan, New Orleans, LA; Scot Figved, Geneva; Caleb Loebbaka, Elburn; Julie Jarmusz, Pingree Grove; Tim Butvilas, Brighton, MI; Jim Powers; Kory Kamp, Elgin; Nancy Heine, Hampshire; Allan Cramton, Hampshire; Chris Bunting, Pontiac; Jerry Rhodes, Rochelle; Jim Feece, Elburn; Rick Hoy, Elgin; Nicole Collins, Geneva; Mona Carlson, Maple Park; Steve Coucoulis, Highland Park; Kurt Fitzgerald, Aurora; Doug Martin; Phillip Biage, Batavia; Jack Anderson, Wasco; Theodore Bain, Ottawa; and Ann Roth, Lombard.

Congratulations, and thank You from the Kane County Farm Bureau Foundation.



(L-R) "31 Days of Christmas" Raffle winners accepted their winnings in January. Cabela's Gift Cards were presented by KCFB Foundation President Joe White, to Kurt Fitzgerald; Caleb Loebbaka (who won for the 2nd consecutive year); Nan Long (for Julie Jarmusz); Nicole Collins; Mike Kenyon (for Tim Butvilas); and Dale Pitstick (for Mona Carlson).

Support local farms Text FARM to 52886

New year, new raffle!

So many people make New Year's resolutions to lose weight, save money, and do more for their community. While we cannot help you lose weight, we can help you to save money and do more for your community!

Our "2019 Winner's Choice Raffle" does both - you can save \$ when you buy 3 tickets/\$50 (reg. price is \$20 each) and you are helping your community by providing funds for Ag in the

Classroom activities and Agriculture related scholarships to local Kane County students.

Tickets are NOW available! Return the form below, stop by, or call the Kane County Farm Bureau at 630-584-8660 to purchase your tickets with VISA, MasterCard, or Discover. Visit www.kanecfb.com for more information.

The Grand Prize this year is a choice between a 1966 Ford 100 pick-up truck OR a 1956 Massey-Harris Model 333 farm tractor (or \$3,500 cash). Second and third prizes are \$500 each (food and fuel gift cards). As in past years, Winners Choice Raffle ticket stubs will provide FREE admission to Touch-A-Tractor, April 12-14, 2019 on the lawn at Kane County Farm Bureau.

Winning tickets will be drawn at the 4-H Blue Ribbon Sale at the 2019 Kane County Fair.



Winner's Choice Raffle KCFB Foundation

Please send me _____ Tickets (\$20 each or 3 for \$50)
Name _____
Address _____
City _____ State _____ Zip _____
Email _____
Phone (_____) _____
Return with check made payable to
Kane County Farm Bureau Foundation, 2N710 Randall Road,
St. Charles, IL 60174 or charge my
 Visa MC # _____ Exp ____/____
Signature _____ Date ____/____/____