

# Kane County Farmer



**KANE COUNTY  
FARM BUREAU®**  
Farm. Family. Food.™

Enhance the quality of life for member families;  
Promote agriculture, farms & food; and,  
Advocate good stewardship of our land and resources.

VOL. 82 NO. 2 FEBRUARY 2017

## Shopping Spree to provide hunger relief

On Monday, February 20, Kane County Farm Bureau will host its 15th annual Food Check-Out "Challenge," a Shopping Spree to benefit local food pantries. The public is invited to come watch local officials race to collect food to help restock the shelves of two area food pantries. The contest will once again be held at the Batavia Jewel-Osco, on Randall Road at Main Street in Batavia.

Food Check-Out Week teaches Americans how to

stretch their grocery dollars with healthy, nutritious food. Typically, consumers spend just 10 percent of their disposable annual income on food. This low number is thanks to the efficient efforts by America's farmers and ranchers, who work hard every day to provide a safe, abundant and affordable food supply.

All of the groceries collected during the 5-minute spree are purchased by the Farm Bureau and donated to the respective

pantries. Waubonsee Community College President Dr. Christine Sobek will compete in the February 20 event and be joined by another local public official.

Through this and other recent hunger relief efforts including Harvest for ALL and the related Million Meal Challenge, KCFB members have donated the equivalent of more than 1.75 million meals to area food pantries.

KCFB sponsors a shopping spree where public officials race to collect food for local food pantries. In 2016, County Board member TR Smith piled his cart high before checking out, raising over \$900 for The Burlington-Hampshire Food Pantry. The public is invited to watch the 2017 "Food Check-Out Challenge" at 10:30am on Monday, Feb. 20 at the Batavia Jewel-Osco.



## KCFB Foundation to host National Chili Day Cook-off!

National Chili Day is Thursday, February 23rd and what better way to celebrate than by making a winning pot of chili - while supporting the KCFB Foundation. Judging will be based on ICS criteria: good chili flavor, texture, consistency, blend of spices, aroma and color.

A trophy plus 25% of the entry fee for each category will be awarded to the top creations in the following:

**Best Homestyle Chili;** **Best Non-Traditional Chili;** **Best Wildlife Chili;** **Best Vegetarian Chili** (chili without meat)

The judging for the best in each category will begin promptly at 4:30 PM by a panel of "celebrity" judges. Winners will be announced at the conclusion of judging.

A **People's choice chili** will be selected at the end of the night via public vote. Chili's will be numbered and the public will be invited to vote for their favorite. The People's Choice award winning chili (trophy PLUS bragging

sandwich while supplies last. Additional bowls drinks, and snacks can be purchased as well. All entry fees and event proceeds benefit the KCFB Foundation in support of agricultural education and college scholarships.

### How to enter:

1. Call, email, or mail in the entry form below by February 17th to:

KCFB Foundation Chili Cook-off, 2N710 Randall Road, St. Charles, IL 60174.

Email: info@kanecfb.com

Phone: (630) 584-8660

2. Pay the entry fee (\$15 per member, \$25 per non-member). Make checks payable to: KCFB Foundation. Visa, Discover, or MasterCard accepted in person or over the phone

3. Cook a minimum of 6 quarts of chili and bring it to the KCFB at or before 4PM on Thursday, February 23.

For more information, check out [www.Kanecfb.com/Chili](http://www.Kanecfb.com/Chili).



*Are you the reigning champion of chili among your friends and family? Why not test your recipe against other chili lovers at the KCFB Foundation National Chili Day Chili Cook-Off!*

rights) will be announced February 24th. Prizes will also be awarded for best presentation or theme (plan for 30" of table space) and best recipe card. Multiple recipe cards are encouraged.

### Not a cook but still want to celebrate national Chili day?

Head on over to the KCFB office for a public tasting at 5:30PM. A \$5 donation will get you a 3 portion "flight" of chili sample bowls, a grilled cheese

## Fourth graders explore farming at Ag Days

Did you know the felt on a pool table comes from a sheep's wool, or that crayons can be made from soybeans? Neither do lots of kids. Many also don't realize that food comes from farms, not the store.

A snapshot of farms and farmers will be on display for two days,

March 21 & 22, inside the Fieldhouse at Mooseheart Child City & School near Batavia dur-

Whether you're someone who doesn't know a grain bin from an airplane hangar, or you log hundreds of hours in the cab of a combine - you can help Kane County ten-year-olds learn about farming and what it does for the world. Call 630-584-660 to learn how.

ing AG Days. For three decades this Kane County Farm Bureau agricultural expo has been helping fourth graders walk away with a better understanding of where their food comes from. Up to 2,000

kids will learn about farm products that go into everything from (continued on page 6)

Can YOU describe biotechnology? Fourth graders who attend Ag Days can, by the end of their day-long experience with agriculture.



### DATES TO REMEMBER

## February

#### February 2

Board of Directors, 7:30pm

#### February 13

Water Test Kits Available (Through Feb. 24)

#### February 15

KCFB Foundation Scholarship Applications Due

#### February 17

Chili Cook-off entries due

#### February 20

Food Check-Out Challenge Shopping Spree, 10:30 a.m., Batavia Jewel

#### February 23

Chili Cook-off, 5:30pm

#### February 27

Water test kits/samples to be returned to KCFB

## ENTRY FORM (due by February 17th):



Head Cook: \_\_\_\_\_

Chili/Team Name \_\_\_\_\_

Type(s) of Chili:

\_\_\_ Homestyle \_\_\_ Non Traditional (meat \_\_\_\_\_)

\_\_\_ Vegetarian \_\_\_ Wildlife (meat \_\_\_\_\_)

Address \_\_\_\_\_

City \_\_\_\_\_ State \_\_\_\_\_ Zip \_\_\_\_\_

Phone (\_\_\_\_\_) \_\_\_\_\_

Entry fee: \$15.00 (Member) and \$25.00 (Non-Member)

Make checks payable to: KCFB Foundation. Visa, Discover, or MasterCard accepted in person or over the phone

### February Featured Product

## Pork Chops

Our featured product for this month is Imboden's Meats delicious seasoned pork chops. Each 5 lb. box comes in 8 oz. or 10 oz. and boneless and bone-in varieties. Each chop comes in a vacuum sealed plastic bag. Just thaw, cut it open and pour it out on your grill for a perfectly seasoned, thick, juicy pork chop every time. Price is \$25 per box for KCFB members, \$23 for plus members and \$28 for non-members. It's a Farm Bureau member favorite! Available at Kane County Farm Bureau, Randall Road and Oak Street in St. Charles.

## NOTICE OF ANNUAL MEETING

Notice is hereby given that the 104th Annual Meeting of the Kane County Farm Bureau will be held at the Kane County Farm Bureau, 2N710 Randall Road, St. Charles, IL 60174 on Tuesday, April 4, 2017 at 7:00 p.m. for the purpose of receiving and acting upon reports of officers, the board of directors and management for the fiscal year ended December 31, 2016, and to announce the eight directors elected to serve terms of one or three years to represent Districts 1 through 5, as determined by a Resolution of the Board of Directors adopted January 7, 2016, and for transaction of any other business that may properly come before the meeting.

*Michael Kenyon, Secretary*

# KCFB Board Review

## January 2017

Directors welcomed Bert Veldhuizen and Kathy Koshini, two of seven "31 Days of Christmas" raffle winners in the KCFB Foundation annual scholarship fundraiser. At the beginning of the meeting, Koshini, winner on two separate days, was presented with gift cards totaling \$700 and Veldhuizen was presented a \$280 Cabela's gift card. President Joe White thanked all who supported the Foundation by purchasing raffle tickets. The raffle tickets are an important element in funding the Foundation for future scholarship recipients.

The Board heard reports on the Aurora COUNTRY Financial Agency from agency manager Kevin Gomes, as well as a report from IFB Region 2 manager Ryan Ford.

Joe White gave the Presidents report. He told the board that the District 1, 2 & 4 President's Meeting would be

taking place in late January at DeKalb CFB. He asked if the board had questions or topics for the meeting. A Statewide President's and Managers meeting on HR topics is scheduled in March, the location still being determined. White also informed the board about the proposed Nominating Committee for 2017. The Committee recommendations included: District 1, Jeff Bornemann, and alt. Ray Feldott; District 2, Sandy Gould, alt Trent Pierson; District 3, Andy Lenkaitis, alt Gerard Fabrizius; District 4, Alan Volpp, alt Carolyn Gehrke; District 5, Dan Heinrich, alt Lloyd Goebbert. The board approved all appointments. The Nominating Committee will meet prior to the February Board meeting and may choose to interview incumbent candidates for re-election at the meeting. White also reminded the board that notices regarding election ballots and annual

meeting will be mailed out in late March.

Arnold gave the Manager's Report, starting by circulating the Membership Matters Monthly and the Calendar of events. Arnold informed the board that January meeting dates were needed for Finance and Government Affairs committees. Arnold spoke about the lobby remodeling. Two bids will be sought for the project. He reminded the board members about the Technology Grant due in April and the FOTO Grant due in May, as well as suggestions for each grant.

B. Collins gave the PR & Membership report. He informed the board on contributions to the KCFB Foundation during the previous month including: FOUNDATION Direct Mail Year end contributions by: Janet Spohr, Craig Spohr, Edward Regole, Mike and Helen Biddle, Mark Regole, Thomas Halat, Lynn and Betty

Landmeier, Kenneth and Nancy Meyer, Edward Butts, Scott and Michele Horton, Andy and Sarah Lenkaitis, James and Deloris O'Connell, 1st Farm Credit Services, Thomas and Janet Runty, Richard and Wilma Phillips, Richard Bartels, David and Carol Bateman, Charles & Mary Ellen Heidgen, Wendell and Mary Dienst, P and Linda Williams, Steve and Katie Downen, Edward and Margaret Wesemann, John Zeissler, Robert and Julie White, Yuhong Wang, John and Nan Long, Dunteman Grain Farms, Phil and Kristine Farrell, Dan and Charene Nagel, Harvest for ALL contributions by: Gehrke Family Farm to Food for Greater Elgin; Suzanne Myers to Northern Illinois Food Bank, Steven & Gladys Arnold to

Northern Illinois Food Bank, Mike Kenyon to Food for Greater Elgin, Karl & Julie Kettelkamp and Paul "Griz" Stover to Elburn Food Pantry, Mike Dienst & Family to St Vincent DePaul of Maple Park, and Food>Forward Contributions by Steve & Gladys Arnold, John & Patricia Kozik.

In the Government Affairs & Public Policy arena, Wayne Schneider reminded the board of the upcoming committee meeting and spoke about the Food Check-out Challenge shopping spree, sharing possible dates, locations, and candidates. The shopping spree will be taking place on Monday, February 20th at the Jewel Osco in Batavia at 10:30AM. Schneider informed the board of the need to set dates

(continued on page 4)

# Visit D.C. with Farm Bureau in March

Illinois Farm Bureau will once again organize a trip to Washington D.C. for Farm Bureau Leaders this spring. The Leaders to Washington trip is set for Monday-Wednesday, March 6-8. The registration deadline is February 7.

The program is conducted twice each year in March and September. Because of an abundance of laws and regulations

facing the farming community, it is important for farmers to build relationships in Washington D.C.

Farm Bureau leaders visit our nation's capital to help implement Farm Bureau policy. There, the group of men and women from across the state will meet with legislators and their staff to talk about issues important to Illinois agriculture.

Members interested in representing Kane County on the March trip should contact Kane County Farm Bureau at 630-584-8660.



# Lunches to Legislators

Would you like to have lunch with an Illinois State Representative or Senator? Kane County Farm Bureau's Lunches to Legislators (L2L) program gives you a chance to do just that! We need qualified volun-

teers for this annual visit that allows Farm Bureau members to get better acquainted with legislators.

This year's program will be a two-day event in March, allowing more flexibility for volun-

teers to find a time to participate. Farm Bureau volunteers will arrange visits to district offices of Kane County's six state senators, nine state representatives, four congressmen and the offices of our U.S. Senators in Chicago. Equipped with boxed lunches, Farm Bureau policy books and farm and food facts literature, they'll express their appreciation for the legislators' hard work.

To volunteer to assist with this program, please fill out the form below and mail back to the KCFB office prior to February 28.

Farm Bureau Board Members Joe White, Wayne Schneider, and Mike Kenyon loaded up a cooler with lunches to bring to Illinois State Legislators in 2016. This annual visit that allows Farm Bureau members to get more acquainted with legislators. Interested in having lunch with an Illinois State Representative or Senator? Fill out the form below to be considered as a volunteer!



You receive the *Kane County Farmer* because you are a Farm Bureau member. If you are a farm operator or owner, you benefit from a local, state and national organization committed to agriculture and your way of life.

If you do not have direct ties to farming, your membership helps promote local farms and farming, encourages wise use of our limited natural resources and preserves farmland and our agricultural heritage while allowing you to enjoy COUNTRY insurance and the many other benefits of one of Illinois' premier membership organizations.

We appreciate your membership and continued support and we welcome your comments on the content of the *Farmer*. We encourage you to make recommendations about farm, home, food, natural resource, renewable energy or agricultural heritage and history related topics for inclusion in future issues of the *Farmer*.

## KANE COUNTY FARM BUREAU BOARD ATTENDANCE JANUARY 2017 THRU DECEMBER 2017

	JAN	FEB	MAR	APR	MAY	JUN	JULY	AUG	SEP	OCT	NOV	DEC
C. BRADLEY												
F. CARLSON		X										
B. COLLINS		X										
C. COLLINS		X										
J. ENGEL		X										
G. GAITSCH		X										
B. GEHRKE		X										
W. KECK		X										
M. KENYON		X										
K. KETTELKAMP		X										
D. LEHRER												
N. LONG		X										
D. PITSTICK												
W. SCHNEIDER		X										
J. WHITE		X										

**Kane County Farmer**  
**KANE COUNTY FARM BUREAU**  
**PUBLISHED MONTHLY**  
 Steven J. Arnold, Editor  
 Suzi Myers, Ag Literacy Coordinator  
 Audre Pack, Training Specialist  
 Elizabeth Polovin, Member Services Coordinator  
 Kristi Van Oost, Development & Program Coordinator  
 Valerie Johnson, Administrative & Program Assistant  
**OFFICE: Randall Rd. between Routes 64 & 38**  
**Address: 2N710 Randall Rd., St. Charles**  
**PHONE: 630-584-8660**  
 info@kanecfb.com www.kanecfb.com  
**OFFICE HOURS: 8:30-4:30 Monday through Friday**  
 (USPS No. 289700)  
**POSTMASTER: Send address changes to Kane County Farmer**  
**2N710 Randall Rd., St. Charles, IL 60174**  
 Periodical Postage • Paid to St. Charles, IL 60174  
 Year Subscription: \$2.00

<p>■ <b>DISTRICT 1</b>  <b>Aurora, Sugar Grove, Big Rock Twnshp.</b>  <b>Nan Long</b>        11461 E. County Line Rd.        Big Rock, IL 60511        815-693-7214  <b>Donna Lehrer</b>        7S027 Jericho Rd.        Big Rock, IL 60511        630-556-3476  <b>William Keck</b>        P.O. Box 281        Sugar Grove, IL 60554        630-466-4668  <b>■ DISTRICT 2</b>  <b>Kaneville, Blackberry, Gen./Bat. Twnshp.</b>  <b>Bill Collins</b>        1125 Lewis Rd.        Geneva, IL 60134        630-484-6852  <b>Karl Kettelkamp</b>        OS860 Rowe Rd.        Elburn, IL 60119        630-365-2713</p>	<p><b>Joe White</b>  <b>President</b>        47W727 Main St. Rd.        Elburn, IL 60119        630-557-2517  <b>■ DISTRICT 3</b>  <b>Virgil, Campton, St. Charles Twnshp.</b>  <b>Frank Carlson</b>        104 Sumac Court        St. Charles, IL 60174        630-513-9980  <b>Chris Collins</b>        1143 Anderson        Elburn, IL 60119        630-934-4642  <b>Dale Pitstick</b>        128 N Hadsall St.        Genoa, IL 60135        630-816-0223  <b>■ DISTRICT 4</b>  <b>Burlington, Plato Elgin Twnshp.</b>  <b>Beth Gehrke</b>        12N860 US Hwy. 20        Elgin, IL 60124        847-697-2538</p>	<p><b>Mike Kenyon</b>  <b>Secretary/Treasurer</b>        1250 E. Main St.        South Elgin, IL 60177        847-741-1818  <b>Craig Bradley</b>        37W791 Orchard Lane        Elgin, IL 60124        847-888-2380  <b>■ DISTRICT 5</b>  <b>Hampshire, Rutland, Dundee Twnshp.</b>  <b>Joe Engel</b>        516 Sawgrass Ln.        Hampshire, IL 60140        847-347-5561  <b>Gerald Gaitsch</b>        10613 Brittany Ave.        Huntley, IL 60142        847-669-2003  <b>Wayne Schneider</b>  <b>Vice President</b>        721 Lindsay Lane        West Dundee, IL 60118        847-428-0488</p>
--	--	--

Name: \_\_\_\_\_  
 Phone: \_\_\_\_\_  
 Email Address: \_\_\_\_\_  
 Address: \_\_\_\_\_  
 City: \_\_\_\_\_ State: \_\_\_\_\_ Zip Code: \_\_\_\_\_  
 Legislative District: \_\_\_\_\_  
 Congressional District: \_\_\_\_\_  
 Do you have a relationship with a current elected official? If so, who?  
 \_\_\_\_\_  
 \_\_\_\_\_  
 Which Farm Bureau policies on state and national issues can you support?  
 \_\_\_\_\_  
 \_\_\_\_\_  
 Please provide a brief description of your agricultural background and/or legislative priorities:  
 \_\_\_\_\_  
 \_\_\_\_\_  
 \_\_\_\_\_

**Beef store is now open!**  
**By appointment only**

**farmdirectBLACKANGUS.com**

100% hormone free beef.  
 Selling individual cuts. Buy as little or as much as you want.

**815.895.4691**  
 Mark & Linda Schramer, Owners  
 8N840 Lakin Road, Maple Park

**Sample Packs make great gifts!**

# Get peace of mind with water test

Kane County Farm Bureau and Kane/DuPage Soil and Water Conservation District will

cooperate to offer a water testing program in February. A high quality water supply is vital for

families. This program helps provide peace of mind and identifies potential problem areas.

# Help raise Foundation scholarship funds with Tractor Raffle



Get your chance to win one of six great prizes in Kane County Farm Bureau Foundation's Winner's Choice Tractor Raffle. All proceeds from the annual raffle benefit Foundation College Scholarships and Farm Bureau Agricultural Literacy programs.

Tickets are \$10 each or 3 for \$25 and are available at Kane County Farm Bureau (2N710 Randall Road, St. Charles), from the Farm Bureau directors listed on page 2, with VISA or Mastercard at 630-584-8660, or by sending payment with the ticket request form below.

New in 2017, bring your Winner's Choice raffle ticket sub for FREE family admission to the popular Tough-A-Tractor event taking place April 7-9 on the KCFB front lawn.

In 2016, the Foundation awarded over \$30,000 in scholarships & internships. Your contributions to the Foundation, through the annual raffle and other events throughout the year, help students attain their degrees, reach their goals, and help secure a bright future for the Ag industry.

The grand prize winner in the annual raffle to be drawn at our Touch-A-Tractor event on Sunday, April 9, 2017 can choose one of three great prizes: a nicely restored 1953 Farmall Super C or a John Deere X350 riding lawn mower or \$2,500 cash. There's a great lineup of food, fuel and Farm Bureau prizes that include second prize of \$500 in groceries, third prize \$500 in fuel, and fourth prize is \$250 in Kane County Farm Bureau Bucks.

For more information and rules on this year's raffle, scholarship programs or other KCFB Foundation programs and services, visit [www.kanecfb.com](http://www.kanecfb.com) or contact Steve Arnold at 630-584-8660.

Kits are available at KCFB from Monday, Feb. 13-24. Pick up test kits from Kane County Farm Bureau, 8:30-4:30pm or from the Kane/DuPage Soil and Water Conservation District, 8:00-4:30 p.m., Monday through Friday.

Collect the water sample on Sunday, Feb. 26 and return it to KCFB on Monday, Feb. 27.

Costs vary for depending on which tests you have performed on your water. Three kits are available:

### A. Basic Package (Nitrate Package) - \$45.00

Tests for nitrate, nitrite, ammonia, chloride, sulfate, soluble phosphorus, silica and specific conductivity.

### B. Pesticide Screen - \$80.00

Indicates the presence of triazine herbicides, lasso, dual or harness.

### C. Metals - \$95.00

Tests for 23 different metals. Detailed sampling instructions will be included in each kit and additional information on how each test can help you is provided at the Farm Bureau or



Kits available at KCFB starting Feb. 13

Kane/DuPage Soil and Water Conservation's District offices. Testing will be performed by Heidelberg College Water Quality Laboratory in

Tiffin, Ohio, a certified lab that has been nationally recognized for its work in testing rivers and lakes, and results are mailed directly to your home.

We are able to provide these deeply discounted testing fees only because we are providing the laboratory a bulk number to be tested. Testing will be offered in February only. For more information, call Kane County Farm Bureau at 630-584-8660.

# Bring antique tractors to Touch-A-Tractor, Apr. 7-9

Now's the time to think about knocking the dust off that antique tractor in the shed. If you only take that tractor one place this year - make it Touch-A-Tractor at the Kane County Farm Bureau!

Our 12th annual Touch-A-Tractor will be held Friday - Sunday, April 7-9, 2017. We're making preparations to bring some farm to the city for this ever-popular event that's fun for the whole family. If you have an antique tractor - whether you've spent hours restoring it or it's a still working tractor with lots of farming memories - please consider bringing it to the event.

There's nothing like the look on a child's face when they sit in the seat of a tractor they normally only see from the road or in a book. This year you'll get a special commemorative gift in appreciation for participating.

Due to space limitations and the size of modern farm machines, the Farm Bureau will again call on Sugar Grove area farmer Bruce Nagel, a long-time supporter of Touch-A-Tractor and Ag Days, to provide the necessary modern tractors, combine, tillage equipment, sprayer and planter to display for our urban and suburban neighbors. But antique tractors are needed - and the more the merrier!

All tractor participants will

also be treated to a free dinner at 5:30pm on Thursday, April 6 at Kane County Farm Bureau. Bring your tractor that night, or park it on the lawn anytime during the week leading up to the event.

Just clip and send in the form below or call 630-584-8660 to let us know the make and model of tractor you'll be bring. We also need farmers, or retired farmers, to explain how the equipment works. So if you can be there any day of the event - please let us know!

### Special offer and dinner for participating tractor enthusiasts



We need YOUR antique tractor to make moments like this. Bring an antique tractor to Touch-A-Tractor, April 7-9 and we'll have dinner on the grill for you on Thursday, April 6 to show our appreciation.

## KCFB Foundation Winner's Choice Tractor Raffle

Please send me \_\_\_\_\_ tickets (\$10 each or 3 for \$25)

Name \_\_\_\_\_

Address \_\_\_\_\_

City, State, Zip \_\_\_\_\_

Email \_\_\_\_\_ Phone (\_\_\_\_\_) \_\_\_\_\_

Return with check payable to Kane County Farm Bureau Foundation, 2N710 Randall Road, St Charles, IL 60174 *or* charge my:

Visa  MC # \_\_\_\_\_ Exp \_\_\_\_/\_\_\_\_/\_\_\_\_

Signature \_\_\_\_\_ Date \_\_\_\_/\_\_\_\_/\_\_\_\_

# Calling all Farmers & Landowners!

Do you have an interest in agriculture? Would you like to take charge of your future by setting policy and building relationships that will last throughout the next generation of agricultural landowners and leaders? Do you have a desire to gather ideas and do something about the challenges and opportunities of farming in Kane County? Then perhaps you should consider running for a seat on the Kane County Farm Bureau's Board of Directors.

The KCFB Board consists of 15 directors, three seats in each

of five East-West districts. District 1 consists of Aurora, Big Rock and Sugar Grove Township; District 2 is Kaneville, Blackberry, Geneva and Batavia Townships; District 3 is Virgil, Campton and St. Charles Townships; District 4 is Burlington, Plato and Elgin Townships; and District 5 is Hampshire, Rutland, and Dundee Townships. Directors serve three year terms. With the approval of new bylaws in late 2015, there are now 5 seats up for election each year, 1 in each District.

Our members belong to the Farm Bureau for many reasons. Some join to take action on behalf of agriculture. Others join to support Farm Bureau policies or assist with program efforts. Farm Bureau works on the local level, in Springfield and in Washington D.C. to support action not just on farm issues, but on many of the same things you're concerned about: protection of private property rights and the quality of the rural environment, tax policies and economic growth, and the quality and safety of our food supply. As a regular (voting) member, you are eligible to run for the Board of Directors and help look out for the best interests of all of our members.

The KCFB Board meets the first Thursday evening of each month. For more information, about service on the Board of Directors, please contact President Joe White at 630 557-2517, Manager Steve Arnold at 630 584-8660 or any member of the Board of Directors. To nominate yourself or a neighbor for consideration, please fill out and return the form below to the Nominating Committee by February 15.

Board elections will be held by ballots mailed to regular (voting) members of the association in March.

### TO: Nominating Committee, Kane County Farm Bureau 2N710 Randall Road, St. Charles, IL 60174

Name (please print) \_\_\_\_\_

Mailing Address \_\_\_\_\_

Township \_\_\_\_\_ District # \_\_\_\_\_

Telephone (\_\_\_\_\_) \_\_\_\_\_

Signature \_\_\_\_\_

Membership # (if known) \_\_\_\_\_

Form completed and returned by:

Name \_\_\_\_\_

Mail to this form to: Kane County Farm Bureau, 2N710 Randall Road, St. Charles, IL 60174. Return on or before February 15, 2017. The Nominating Committee will evaluate candidates and propose a slate to run for director.

## Help make Touch-a-Tractor a success.

\_\_\_\_ Contact me about volunteer opportunities (Saturday, April 8 or Sunday, April 9)

\_\_\_\_ I would like to bring the following farm equipment or livestock to display for your guests

Please provide a brief description of the equipment/livestock. For tractors, include year, make, and model.

\_\_\_\_\_  
 \_\_\_\_\_  
 Name \_\_\_\_\_  
 Address \_\_\_\_\_  
 City \_\_\_\_\_ St \_\_\_\_\_ Zip \_\_\_\_\_  
 Phone (\_\_\_\_\_) \_\_\_\_\_

Clip and return to Kane County Farm Bureau, 2N710 Randall Road, St. Charles, IL 60174

## Women's Corner

By Louise Johnson  
Women's Committee Chair



### Have a Happy Valentines Day!

Before Spring arrives and Spring chores begin, take time to clean your dryer vent. Lint can build up in the vent, from the dryer to the outside exit. This can cause dryer exhaust gases to back up into your house and can create a fire hazard. According to the U.S. Consumer Product Safety Commission, more than 15,000 fires are sparked each year by clothes dryers. Never run your dryer when you are asleep; do not run your dryer when you are away; you need to be alert for problems so you can call the fire department!

Do you have a favorite black purse that has gotten nicked or scratched? Sometimes you can

use a black marker to cover the mark. Test an inconspicuous area first. Black shoe polish also sometimes works; however, it may rub off. Be careful to get the marker only on the scratch because the marker will be slightly different than the surrounding, original finish.

Heads up for the Drivers' Safety Course that will be held at the Farm Bureau! COUNTRY Financial, and most other insurance companies believe a Defensive Driving course is so beneficial that they give discounts on policy premiums for taking this course. Check with your agent. You do not need to take the course every year to get a discount. The Defensive Driving course will be held on April 25th and 26th.

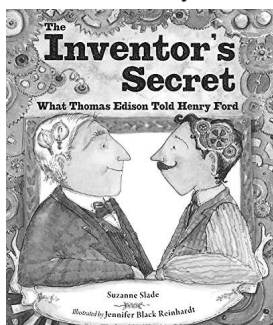
## Book of the month

Since this is National Inventor's Month, our book is very pertinent. The book is centered on two of our great historical inventors; Thomas Edison, who was interested in electricity and Henry Ford, whose passion was machines.

Each of the men struggled to create their inventions, but it seemed to Henry Ford that Thomas Edison had many more successes than he had. Ford wanted to meet Thomas Edison to find out his secret to success. Eventually they did meet. After Ford told of his trials inventing a car that would be available to everyone, Edison told him, "Keep at it." That was the secret ... don't give up ... keep at it.

The "Keep at it" theme can be used in so many facets of our lives, making this book one to

read to children. This is only one of the children's books available for check out from our agricultural library here at the KCFB. Our library began due to a request years ago by Bob Konen and Dean Dunn. We have an ever growing selection of titles. Feel free to come in to browse in our library.



*The Inventor's Secret—What Thomas Edison Told Henry Ford*  
by Suzanne Slade

of the YF Holiday Party on January 6th at Sorrento's Restaurant and that the YF-FFA Acquaintance Program was scheduled for January 26at Northern Illinois Food Bank at 5pm. Finally, the board was informed that IFB sent an additional \$500 for the Young Farmers Committee to donate to the Food Bank from the sale of IFB YL Harvest for ALL Tractors.

The meeting concluded with a Manager's Report from Arnold. He spoke about the Tower lease & Property Taxes, Certification of Status of Exempt Property, Christmas tree contract renewal 2017, and new KCFB office hours (8:30-4:30).

The next scheduled Kane County Farm Bureau Board of Directors meeting will be held Thursday, February 2 at 7:30pm.

## KANE COUNTY FARMER

How about a nice Hamburger Bar-B-Que recipe for February? The combination of equal amounts of vinegar and sugar really adds to the flavor of this recipe. This recipe is from my college roommate, Nancy R.

### BBQ Burger Mix

2 lbs. ground beef  
1 c. chopped onion

1/2 c. chopped green pepper  
1/2 c. chopped celery  
2 8-oz. cans tomato sauce  
1/2 c. ketchup  
2 T. vinegar  
2 T. sugar  
3 tsp. (=1 T.) Worcestershire sauce  
1-2 tsp. salt [I omit this if it's already in the tomato sauce.]

## AG LITERACY CORNER

By Suzi Myers



It seems that every year I strive to simplify my life by organizing my basement. I make some progress, quit and then realize I'm still not done. I've read lots of books, tried different strategies and even had my niece come help me see that "I surely don't need that anymore." (This was right after I retired from teaching and had so many supplies in my basement.)

I even have on my refrigerator "Have nothing in your houses that you do not know to be useful or believe to be beautiful." One of my favorite quotes by William Morris, an English textile designer, poet, novelist, translator, and socialist activist, who died in 1834. Yes, 1834 ...

guess having too much stuff in your home has been a problem for a long time.

Setting aside time for decluttering the basement is one huge hurdle for me. I'm one that wants a block of time to devote to my basement. I might have found a solution to this as I was reading even more hints to lessening the clutter load. Take 15 minutes a day and spend that decluttering ... every day. Wow, that just might work. I could take my four boxes (trash, give away, keep and relocate) and work for 15 minutes, walk away and then continue the following day. That means almost 2 hours a week ... yippee. In just one month, I would have had done 8

1/4 tsp. Pepper  
Brown the meat. Remove the grease. Add vegetables and cook for 5 minutes. Add remaining ingredients and mix. Cover and simmer for 20 minutes, stirring occasionally. Spoon onto hamburger buns. It is OK to halve the recipe, or to double it.

hour's work ... that's one whole day ... a day that I can't seem to find in my busy calendar. I need to go for this concept, it just might work.

If I have any extra moments, I could do the "12-12-12 Challenge" in other parts of my home, like the closets ... ugh. This challenge is a simple task of locating 12 items to throw away, 12 items to donate, and 12 items to be returned to their proper home. Supposedly this can be a really fun and exciting way to quickly organize 36 things in your house.

I'm excited ... wonder how long this will last. At least it's not one of my New Year Resolutions, so who knows, I might have a basement void of any (realistically most) clutter soon. Wish me luck.

Hope to see you at the Chili Cook-Off here at the KCFB on February 23rd. Maybe I can tell you about the successes in my anti-clutter campaign.



AUTO | HOME | LIFE | BUSINESS | RETIREMENT

## Helping you protect what matters most

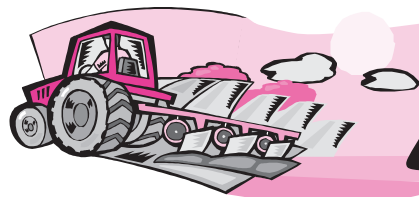
 <b>Bob Effner, CLF®, LUTCF</b> St. Charles - Elgin Agency Manager St. Charles 630-584-0001	 <b>Edward Stuehm</b> Geneva 630-845-8245	 <b>Ashraf Gerges</b> Aurora 630-898-3750
 <b>Todd Wilcox</b> St. Charles 630-762-1326	 <b>Michael O'Brien</b> Geneva 630-762-0852	 <b>Sherri Schramer</b> Elburn 630-365-9500
 <b>Bobbi Boston</b> St. Charles 630-485-5155	 <b>Bob Baty</b> Geneva 630-492-5317	 <b>Dominick Davero</b> Elburn 630-365-3737
 <b>Keith Eakins</b> St. Charles 630-762-1324	 <b>Luke Fawkes</b> Elgin 847-742-0001	 <b>Chuck Quick</b> Hampshire 847-683-2100
 <b>Kelly Landorf</b> St. Charles 630-762-1328	 <b>Jonathan Gonzalez</b> Elgin 847-742-0001	 <b>Josh Austin</b> Hampshire 847-683-2100
 <b>Donna Tonovitz</b> St. Charles 630-549-7694	 <b>Sherry Lochen</b> Elgin 847-742-0001	 <b>Dan Cooper</b> Sugar Grove 630-466-9600
 <b>Orazio Difruscolo</b> St. Charles 630-549-7696	 <b>Bob Riedel</b> West Dundee 847-428-5434	 <b>Ted Schuster</b> Sugar Grove 630-466-9600
 <b>Bob Kearns</b> S. Elgin 847-888-3200	 <b>Gary Bolger</b> West Dundee 847-531-6110	 <b>Sonny Ellen</b> Sugar Grove 630-466-9600
 <b>David Murray</b> Montgomery 630-897-2364	Auto, home and business insurance policies issued by COUNTRY Mutual Insurance Company®, COUNTRY Preferred Insurance Company® and COUNTRY Casualty Insurance Company®. Life insurance policies issued by COUNTRY Life Insurance Company® and COUNTRY Investors Life Assurance Company®. Fixed annuities issued by COUNTRY Investors Life Assurance Company®. All issuing companies located in Bloomington, IL.	

SEE YOU AT TOUCH-A-TRACTOR April 7-9, 2017



**DONALD J. FEE, DDS**  
FAMILY DENTAL CARE

26 W. CROSS ST. SUGAR GROVE DONALDFEEDDS.COM  
630-466-4511



# Farm Facts @ Fun

Compiled by Suzi Myers



Did you know:

- The first chili mix was concocted around 1850 by Texan adventurers and cowboys as a staple for hard times when traveling. The trail cooks pounded dried beef, fat, pepper, salt, and the chile peppers together into stackable rectangles which could be easily rehydrated with boiling water. This amounted to "brick chili" or "chili bricks" that could be boiled in pots along the trail.
- In the late 1800's, it is said that the Texas prison version of bread and water (or gruel) was a stew of the cheapest available ingredients (tough beef that was hacked fine and chiles and spices that were boiled in water to an edible consistency). The "prisoner's plight" became a status symbol of the Texas prisons and the inmates used to rate jails on the quality of their chili.
- Texas chili went national when Texas set up a San Antonio Chili Stand at the 1893 Columbian Exposition in Chicago.
- Spanish priests deemed chili the "soup of the devil" and preached sermons against indulgence.
- Chili con carne was dubbed the Lone Star's state food in 1977.
- 1993 the state legislature of Illinois named Springfield "The Chilli Capital of the Civilized World." At its peak, Springfield boasted over a dozen chili parlors, three chili canners and exports of over four million cans per year.
- Chasen's Restaurant in Hollywood, California probably made the most famous chili. The owner of the restaurant, Dave Chasen (1899-1973) kept the recipe a secret, entrusting it to no one.
- Will Rogers (1879-1935), popular actor, cattleman, banker, and journalist, called chili a "bowl of blessedness."
- Jesse James (1847-1882), outlaw and desperado of the old American West, refused to rob a bank in McKinney, Texas because that is where his favorite chili parlor was located.
- U.S. President Lyndon B. Johnson was a big chili lover. His favorite recipe became known as Pedernales River chili after the location of his Texas ranch.

**Simple and savory** – A simple recipe to have your children help make would be to spread chili on a piece of toast and put a piece of cheese on top. Broil till cheese melts and enjoy.

## Chili cook-offs

- The most famous and well known chili cook-off took place in 1967 in Terlinga, Texas, a border town about 400 miles west of chili's alleged birthplace, San Antonio. The cook-off competition ended in a tie vote when the tie-breaker judge spit out his chili, declaring that his taste buds were "ruined," and said they would have to do the whole thing over again next year.
- On October 5, 1952 at the Texas State Fair in Dallas, Texas. Mrs. F. G. Ventura of Dallas won the Texas State Fair contest and her recipe was declared the

"Official State Fair of Texas Chili Recipe" and first ever "World Champion Chili Cook." Mrs. Ventura held her title as World Champions Chili Cook for 15 years.

- Chili Appreciation Society International which has approximately 50 "pods" or clubs in the United States and Canada and supports over 400 sanctioned chili cook offs involving thousands of participants each year.
- Attributes chili cook-off judges look for in chili:

**TASTE** is the most important factor. The taste should consist

of the combination of the meat, peppers, spices, etc, with no particular ingredient being dominant, but rather a blend of the flavors.

**CONSISTENCY** – Chili must have a good ratio between sauce and meat. It should not be dry, watery, grainy, lumpy, or greasy.

**AROMA** – Chili should smell good.

**COLOR** – Chili should look appetizing.

**BITE** (after taste) is the heat created by the various type of chili peppers and chili spices.

## Cincinnati chili recipe

Prep Time: 15 minutes  
Cook Time: 1 hour, 30 minutes  
Yield: 6 to 8 servings

### Ingredients:

- 1 large onion, chopped
- 1 pound extra-lean ground beef (hamburger)
- 1 clove garlic, minced
- 1 tablespoon chili powder
- 1 teaspoon ground allspice
- 1 teaspoon ground cinnamon
- 1 teaspoon ground cumin\*
- 1/2 teaspoon red (cayenne) pepper
- 1/2 teaspoon salt
- 1 1/2 tablespoons unsweetened cocoa or 1/2 ounce grated unsweetened chocolate
- 1 (15-ounce) can tomato sauce

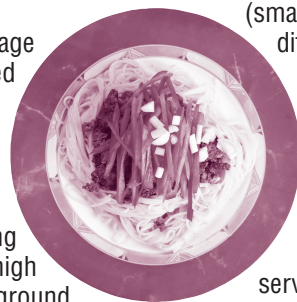
- 1 tablespoon Worcestershire sauce
- 1 tablespoon cider vinegar
- 1/2 cup water
- 1 (16-ounce) package uncooked dried spaghetti pasta
- Toppings (see below)

### Instructions:

In a large frying pan over medium-high heat, sauté onion, ground beef, garlic, and chili powder until ground beef is slightly cooked.

Add rest of ingredients except for spaghetti noodles and toppings. Simmer uncovered for an

hour. Cook spaghetti and transfer onto individual serving plates (small oval plates are traditional).



Ladle Cincinnati Chili mixture over the cooked spaghetti and serve with toppings of your choice.

Oyster crackers are served in a separate container on the side.

### Toppings:

- Oyster Crackers
- Shredded Cheddar Cheese
- Chopped Onion
- Kidney Beans (16-ounce) can

## Have a chili pepper relay

1. Divide children into two or more teams and have each team form a line.
2. Give each team a long red balloon (their "chili pepper").
3. Kids pass their chili pepper down the line as quickly as possible. The first player passes it between his legs, the second

over her head, the third between his legs, and so on.

4. When the pepper reaches the last child, they race to the front of the team's line and start the chili pepper down again.

5. The relay ends when the first player from one of the teams reaches the back of his team's

line, gets the chili pepper, and returns it to the front of the line.



## Chili

Z	B	U	O	R	R	I	P	W	J	I	Q	A	O	W	L	W	N	E	A	AROMA
Q	J	K	F	S	C	C	I	B	W	S	B	T	V	B	X	K	V	J	N	BEANS
X	O	B	A	H	A	L	T	W	P	H	E	Y	I	Q	C	S	V	T	A	BITE
R	J	X	A	Y	L	A	A	R	O	R	I	T	D	V	R	Q	V	A	I	BRICKS
J	E	S	E	I	Y	Z	I	K	L	U	E	T	D	G	J	X	F	D	R	CAYENNE
T	E	N	N	T	P	N	D	I	Q	V	B	B	E	L	R	U	F	Z	A	CHASEN
N	N	O	J	I	G	E	N	E	C	M	S	Y	P	C	T	L	N	H	T	CHILI
E	I	S	W	F	L	G	P	C	O	N	S	I	S	T	E	N	C	Y	E	CINCINNATI
S	G	J	I	E	A	I	F	P	Q	O	O	P	Z	F	P	T	Q	R	G	COLOR
V	T	E	D	J	T	E	H	V	E	B	H	S	J	T	E	E	A	S	E	CONSISTENCY
T	L	E	E	Z	E	S	Z	C	X	R	T	I	L	C	A	B	X	E	V	CUMIN
D	R	G	Y	B	X	T	B	V	S	H	S	P	U	U	I	S	W	R	M	ILLINOIS
I	T	A	N	N	I	C	N	I	C	P	S	G	Y	M	D	X	T	X	G	MEAT
X	Z	T	Y	L	M	B	X	J	O	L	A	K	Q	I	T	Z	S	E	F	PEPPERS
B	G	E	F	E	E	O	O	K	X	Y	C	G	C	N	E	R	S	A	Y	RED
C	D	H	M	A	G	L	A	R	M	F	M	J	H	I	R	G	U	H	N	SPAGHETTI
O	G	N	N	F	T	U	L	B	S	Q	V	F	F	E	R	F	Z	I	O	SPRINGFIELD
L	L	S	T	Z	X	Q	Q	B	V	Y	Y	X	D	P	T	B	G	E	A	STEW
O	B	B	R	G	Q	U	I	W	A	Z	W	B	R	V	D	T	Z	R	S	TASTE
R	I	K	Q	A	M	O	R	A	F	V	D	C	K	U	T	X	I	G	W	TERLINGA
B	G	I	K	T	N	S	B	P	V	T	I	A	E	S	I	I	N	G	K	TEXAS
																				VEGETARIAN
																				WHITE

Name \_\_\_\_\_  
 Address \_\_\_\_\_  
 City \_\_\_\_\_ State \_\_\_\_\_ Zip \_\_\_\_\_  
 Telephone (\_\_\_\_) \_\_\_\_\_ Email \_\_\_\_\_ Age \_\_\_\_\_

Return to: Kane County Farm Bureau, 2N710 Randall Road, St Charles, IL 60174 by February 15, 2017 to be entered in our drawing for a chili-themed prize.

## Geographical styles of chili

"If you know beans about chili, you know chili has no beans," by Jerry Jeff Walker, country music singer.

**Texas Red** is a potent, pungent concoction of chili that touts a no-frills approach to chili: just meat, spices and as many chiles as you can stand. No beans are in Texas Red. To Texans, anything else isn't even called chili.

**Springfield-style "chili"** is a saucy stew with no fear of a little fat in the mix. The Midwesterners go with a mild, cumin-

heavy spice mix and usually add a generous helping of beans.

**Cincinnati Five-Way Chili** is closer to Italian Bolognese than Texas Red. Developed during the Roaring Twenties from Greek roots, this thin chili uses Mediterranean spices such as cinnamon, allspice, cloves and cocoa. Then serve over spaghetti noodles.

## February is:

- National Hot Breakfast Month
- National Black History Month
- National Canned Food Month
- Chocolate Lover's Month
- American Heart Month
- American History Month

## February Holidays:

- National Groundhog Day ..... 2nd
- National Homemade Soup Day..... 4th
- National Send a Card to a Friend Day ..... 7th
- National Pizza Day ..... 9th
- Valentine's Day ..... 14th
- Presidents Day ..... 20th
- National Chili Day ..... 23rd

## Congratulations

**Mary Purkart** of Geneva! Her name was chosen from the entries received for correctly completing last month's Word Search Puzzle. For her participation, she receives wonderful snowglobe! Thank you, Mary for reading the *Kane County Farmer* and continue to watch each month for more great opportunities from the Kane County Farm Bureau.

## The 365 Day a Year Job

By Kristi Van Oost



Back when I was a student at Truman State University, which feels like ages ago despite only graduating in May, one of my best friends named Christina took up residence at the University Farm. This residence was more like a job, as students needed to apply for the position by filling out an application and get interviewed by the farm manager before being selected. The university farm had one duplex house, each side with a kitchen, bathroom, family room, and two bedrooms. Each year two male students and two female students were selected to reside in farm housing and tend to the farm chores while they were living there.

Having a best friend who lived on the farm meant that I spent the vast majority of my free-time there. We were both in

a lot of the same classes and had very similar interests and hobbies, so naturally we spent a lot of time together. It wasn't uncommon that late-night study sessions would turn into sleepovers, which then turned into me assisting in morning farm chores.

Now, that year it was rather snowy in Northeastern Missouri, and on one fine evening we were informed that campus would be closed the following day due to heavy snowfall (yes, snow days happen in college too). Our current study session for Agricultural Ethics quickly changed into a night filled with hot cocoa and reality TV shows, blissfully happy to no longer have an ethics quiz the following morning.

Our wake-up call came early as usual and we quickly dressed head to toe in our Carhartt win-

ter gear and headed out to do morning chores. We were both surprised at the vast amount of snow that has accumulated overnight, but loaded up into the Ranger to start our rounds. Morning chores at that time consisted of feeding the 5 pastures of cattle, tending to the needs of the horses boarded at the farm (which included feeding, watering, turnout and mucking stalls) feeding the university horses, and of course making sure every pasture had water. As we started we quickly decided this morning was going to take more than the normal hour out of our morning. We ran into all sorts of issues that morning ... stuck gates, broken fences, and worst of all ... iced over water troughs.

By the time we finished the "morning" chores we were covered in snow, soaked in frozen water (among other questionable substances), and had frozen ears, fingers, and toes. Worst of all, we only had a few hours before evening chores needed to be done. It felt like my toes had only just started to thaw before we headed out to do it all over again.

My experiences helping my

friend at the farm really put how hard farmers work into perspective for me. I made the personal choice to help my friend with her work, but farmers often times do not chore out of choice, but duty. If they don't tend to their farms properly then they can't make a living and support themselves and their families. Heat wave, thunderstorm or blizzard – farmers don't get a day off. Farming is a 365 day a year job with no paid vacation or time off. While Christina experienced the farm life for two years, she was lucky enough to work with a wonderful team and have friends to help along the way. It is her drive and desire to help the hard working farmers of America that makes her the perfect candidate for the job she currently holds. Christina is a regional Financial Service Specialist

who helps get financing available so farmers can continue to make a living.

Recently, I have taken up residence at a small horse farm in St. Charles. I am in charge of feeding the animals, and turning them out in the morning. While the property is significantly smaller than the University Farm, I still fall victim to frozen hands and toes quite often. Still, I get up every morning to tend to the animals before heading off to work for the day. I work hard, but my hard work is no match for the other farmers through the Kane County area.

Next time the winter weather brings in a blizzard of snow, think about all the farmers clad in their Carhartts about to brave the snowy tundra to earn a living so we can enjoy fresh food from the store.

## What's new in the COUNTRY agencies?

### St. Charles Agency, Bob Effner, Agency Manager

Edward Stuehm has been named the Financial Representative of the Month for December 2016 in the St. Charles/Elgin Agency, as announced by Agency Manager, Robert J. Effner, Sr., CLF®, LUTCF. Ed has provided tangible plans for addressing the immediate and long term insurance and financial security needs of his clients through COUNTRY Financial's diverse products and services:

Auto, Farm, Home, Life/Disability/Health/Annuities/Long Term Care, Retirement Planning, Business and Investments. Let Ed's expertise help you! His contact information is: 425 Williamsburg Ave., Geneva, 60134; Phone 630-845-8245; email Edward.stuehm@countryfinancial.com. Congratulations, Ed!

### Aurora Agency, Kevin Gomes, Agency Manager

Brian Guenther, Financial Representative with the Aurora

Agency, is our Financial Representative of the Month for December 2016. Brian began his career with COUNTRY Financial in January of 2002 and services clients out of his office located at: 1920 Wilson Street, Batavia, 60510, (630) 406-6017.

Brian's professionalism and vast knowledge of auto, home, life, commercial and financial products make him a great person to do business with. Congratulations, Brian!

## '31 Days' Raffle winners

The Kane County Farm Bureau Foundation extends its thanks to everyone who purchased and sold tickets for the third "31 Days of Christmas" college scholarship raffle and fundraiser. After expenses, the raffle will provide nearly \$3,000 for college scholarship to students pursuing higher education in 2017-18, toward farm and food related careers.

With roughly one-third of the available tickets purchased, 7 lucky winners had their holiday brightened on 8 different days with gifts ranging from \$220 to \$500 in value. In lieu of actual prizes as depicted in the "31 Days" calendar, winners were provided with gift cards to Cabela's for the actual value of the prize won, allowing, for example, the winner of a shot-

gun to purchase a bbq grill, or tent, kayak, hammock, etc.

The following got an exact match to their ticket on the Illinois lottery evening Pick 3 numbers during December: Bert Veldhuizen, Bernard Patti, Kathy Konishi, Kory Kamp, Dave Diana, Kathy Chwee and Suzi Braun.

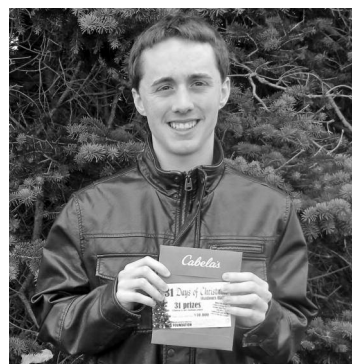
Congratulations!

Photos, clockwise from top left:

Kory Kamp of Elgin won the final "31 Days of Christmas" prize on December 31. He is excited about his prize, a Spotting scope valued at \$350.00.

Bert Veldhuizen (l) of Elburn had his numbers chosen on December 11th, his prize being Cabela's ATV/UTV Winch valued at \$279.99. He collected his certificate at the KCFB Board meeting in January.

Kathy Konishi (r) was the lucky winner on two separate days; December 1st and December 17th. She collected her prizes at the January meeting of the KCFB Board of Directors from President Joe White (l).



## Ag Days

(continued from page 1)

fuel to clothing, baseball mitts to newspaper print.

It's the perfect time for you, as a Farm Bureau member, to get involved. You can help with

activities that are all ready to go – no teaching or farm experience is needed.

Join us at AG Days March 21 & 22 as a Farm Bureau volunteer. Come from 8:30-Noon both days or whichever day you're available.

Farm Bureau is the Fox Valley's largest and oldest agricultural association and the leader in education about farming. We promise you an enjoyable volunteer experience! Call 630-584-8660 with questions or to reserve a volunteer spot.

## Recruiter of the Month

Each month we honor the person who signs the most members into our organization. This month, the honor goes to Felipe Rocha! Felipe has been a COUNTRY Financial Representative since August of 2011. His office is located at 541 N. Lake Street, Aurora. As a token of our appreciation, Felipe receives two tickets to Charlestowne Movie Theater. Thank you for your continued

support of the Kane County Farm Bureau and congratulations on your success!



Felipe Rocha

## CLASSIFIED ADS

### CLASSIFIED AD RATES

Classified advertising rates: 20 cents per word/\$20 minimum (60 words or less). DISCOUNTS for members: Associate members, 20%; Voting members, 30%; PLUS members, 40%. Advance payment requested. Ads due by the 15th of every month for the next issue. No advertising (classified or display) for financial or insurance services will be accepted. Call 630-584-8660.

### FOR SALE

Winpower PTO generator model #25/15 PT2 \$1,000.00 Call Tom – 630 464 4140

Ariens Snow Blower, electric start, 5HP, 24" cut, 4 sp forward/2 sp back. Self-propelled. \$300 OBO. Call: 630 997 4306

### SERVICES

Autumn / Winter Tree Pruning & Removal. Ask about my no-haul-away DISCOUNT. www.Arbor Joe.com – ISA Certified Arborist Joe. Call: 224 789 8773

Jim Verhaeghe & Sons, Inc. – Tree removal, tree trimming, & stump grinding. Backhoe work &

Tile Lines. Fully insured – Free Estimates – Jim Verhaeghe Sr. Call: 847 334 5730

### HELP WANTED

Entry Level Position, 30-35 hrs. weekly. Must be a self-starter & team player. Applicants should be computer literate with pleasant phone voice & manner. Some overnight travel required. Office is located on St Charles, east side. Call Bob to discuss this position – Call: 630 377 5807

### WANTED

Will pick up for free unwanted or old snowmobiles, call Jon – Bobcat work & weed mowing; deliveries of dirt, stone, sand & mulch. Call Jon at 630-254-9446

Want to buy vintage & used tools Call Chris – Also, we do cleanouts. Call: 630 550 7182

### FREE

7 ft. x 7 ft. single-pane tempered glass window, suitable for office or farm shop. Call Steve – 630-584-8660.

To church, school or not-for-profit, 12 ft x 4 ft. oval conference table and 12 chairs. Call Steve – 630-584-8660.



## Recycle

## Scrap for CASH

Steel, Copper, Aluminum & Cars

Trucking & Dumpster Service Available

"Helping to keep America Picked up for 45 years"

Zimmerman Recycling, Inc.  
301 Industrial Drive, DeKalb  
(815) 756.8600

# Apply for Foundation Scholarships by February 15

The Kane County Farm Bureau Foundation is offering several scholarships to members or dependents of members pursuing college degrees. The scholarship application deadline is February 15, 2016.

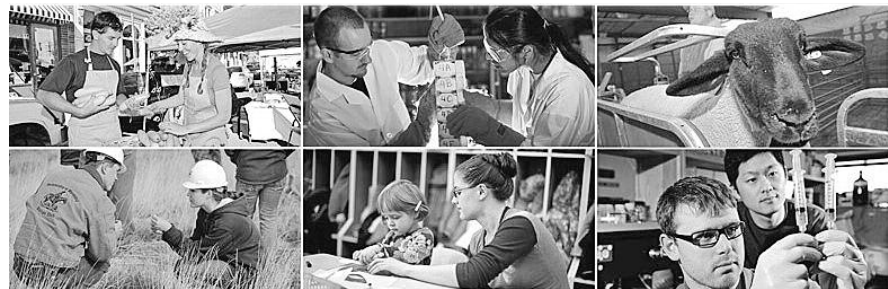
There are hundreds of careers in the agriculture industry and hundreds of students from Kane

County studying in schools across the country to prepare to take the lead in providing food, fiber and fuel for us all.

Applicants may qualify for KCFB General Scholarships, Ag Scholarships, the KCFB President's Scholarship, Chuck Swanson Memorial Scholarship, the John Buck Memorial

Scholarship, the Mary L. Heckel-Blickle Memorial Scholarship, and/or the AGCO Parts Division Scholarships. Applications and details on scholarship requirements are available at [www.kanecfb.com](http://www.kanecfb.com) and at the KCFB office, 2N710 Randall Road, St. Charles. Call 630-584-8660 with questions.

Find an application for KCFB Foundation Scholarships at [www.kanecfb.com](http://www.kanecfb.com). There are approximately 22 million people who work in agriculture related fields. The Agriculture industry offers hundreds of rewarding and challenging careers, with categories including: Agribusiness Management, Agricultural and Natural Resources,



Communications, Agriscience, Resource Development and Management, Parks, Recreations, and Tourism Resources, Packaging, Horticulture, Forestry, Food Science, and Fisheries/Wildlife.



Erin Gaitsch (l) of Huntley was one of 26 recipients of Foundation Scholarships for the 2016-17 school year. She is currently attending Briar Cliff University in Sioux City, IA. The Kane County Farm Bureau Foundation is offering several scholarships to members or dependents of members pursuing college degrees. The scholarship application deadline is February 15, 2016.

## IL Farm Bureau proposals shape AFBF policy

Voting delegates at the 98th annual meeting of the American Farm Bureau Federation (AFBF), including 21 delegates from Illinois, addressed Illinois Farm Bureau's (IFB) priority issues, including submittals to support the Veterinary Feed Directive, develop policy for the 2018 Farm Bill, and oppose farm drainage tile as a point source of pollution under the Clean Water Act, among others.

"Our delegates were instrumental in promoting and debating several key policy resolutions to promote and protect the interests of Illinois Farm Bureau members," said Richard Guebert, Jr., president, IFB. "Illinois delegates addressed submittals regarding unmanned aircraft systems, environmental and conservation issues, education, and the 2018 Farm Bill."

IFB delegates were successful adding language that allows farmers to coordinate repair of damage from normal farming practices with the Natural Resources Conservation Service on highly erodible land; supports legislation that reduces and eliminates burdensome federal regulations; and encourages

consideration of transitioning to a new education model which emphasizes student creativity, innovation, and teamwork.

IFB delegates also were successful in adding language to support keeping the food and nutrition titles together in the upcoming farm bill. During policy debate, they also emphasized the importance of crop insurance and risk management tools, including crop insurance, in the 2018 Farm Bill.

"The farm bill discussion lived up to its expectation of a healthy debate," Guebert said. "We in the Midwest and Illinois supported trying to make risk management tools a top priority in AFBF policy. The policy didn't shake out exactly as we hoped, but we did get our voices heard with regard to the importance of crop insurance. In the end, we're pleased with the direction of policy and with how the business session went."

In addition to successful policy submittals, IFB President Richard Guebert, Jr., was elect-

(continued on page 8)

## Farm bill work session set for March

Kane County farmers can help develop Illinois Farm Bureau's 2018 farm bill priorities during a work session scheduled for March 15.

Adam Nielsen, Illinois Farm Bureau's director of national issues and policy development, will a series of sessions throughout Illinois beginning this month, with one scheduled for 10 am on Wednesday, March 15 at the Kane County Farm Bureau.

The session will include a review of IFB and AFBF's farm bill policy.

Participants will break into small groups and discuss what's working/what needs improving in the 2018 farm bill.

"You'll send me back to Bloomington with a list of 2018 farm bill priorities for the IFB Board of Directors and staff to chew on," Nielsen said.

For more information or to register, contact Kane County Farm Bureau at 630 584-8660.




---

**Water Softeners**  
**Iron & Sulphur Filters**  
**Drinking Water Systems**  
**Sales-Rentals-Service**  
**All Makes**

*Kane County Farm Bureau members receive 10% discount on all service work.*



**FACTORY DIRECT PRICES**  
**◆◆◆◆ NO FIX - NO CHARGE ◆◆◆◆**



**630-584-5559**



MEMBER



[www.johnsonwater.com](http://www.johnsonwater.com)

## 2.99% Financing Now Available!

Take advantage of 2.99% financing for 36 months on Precision Planting purchases over \$10,000. Don't miss this great opportunity to improve your operation's performance!

vSet • vDrive • DeltaForce • SpeedTube • eSet • AirForce • RowFlow • FurrowJet • WaveVision • BullsEye • CleanSweep • vApply HD • 20/20 SeedSense • vSet Select • Precision Meter • vDrive Insecticide • YieldSense





4098 W. Midtown Rd.  
Mt. Morris, IL 61054  
815-734-6236  
[witmerprecision.com](http://witmerprecision.com)



# AFBF policy

(continued from page 7)  
ed to his second consecutive two-year term on the AFBF board of directors, representing the Midwest region.

Many of the 259 IFB members attending the AFBF annual meeting also participated in an impromptu call-to-action during

AFBF President Zippy Duvall's address. During the address, members contacted members of Congress in support of a regulatory reform bill currently moving through the U.S. House of Representatives.

IFB Young Leaders also took home national awards with Grant and Kristen Strom of Knox County winning the

Young Farmer and Rancher Achievement Award. For taking home the top prize, Stroms won their choice of either a 2017 Chevrolet Silverado or a 2017 GMC Sierra. They also will

receive a paid registration to the AFBF FUSION Conference in Pittsburgh Feb. 10-13.

Mark and Sara Mitchell of Grundy County advanced to the top 10 finalists in the Young

Farmer and Rancher Excellence in Agriculture Award, and Lynn Doran of Champaign County advanced to the Sweet 16 in the Young Farmer and Rancher Discussion Meet.

## Nominations sought for KCFB Director

The Kane County Farm Bureau is seeking eligible candidates for election to the association's Board of Directors. A Farm Bureau director is an individual who helps provide governance, set policies, and supports the philosophy and actions of the organization. Directors should be willing to dedicate time to make a difference in agriculture and to provide direction, inspiration, and motivation to the largest, most influential and effective farm related organization in Kane County.

Eligible candidates are "MM" members (farmers and farmland owners) residing in Kane County.

Five directors will be elected, by ballots mailed in March, to MM members in each respective District. KCFB has five districts each made up of three townships.

To suggest potential candidates for election, members should call 630-584-8660 by February 15, or fill out the form on page 3.

## Thanks to our donors...

*Our FOUNDATION is dedicated to providing agriculture based education for the next generation, and to meeting the challenge of providing food for a hungry planet. We look forward to continuing support for scholarships, along with local classrooms and teachers, leadership training, and community youth education through grants to local FFA Chapters and 4-H.*

The KCFB FOUNDATION offers its sincere appreciation to the following for their contributions in response to our December Agriculture in the Classroom fundraising appeal. These donations will allow the Foundation to provide funding to improve classroom education about food and farming. Names shown are pledges received through December 20th.



**Kane County Farm Bureau FOUNDATION**  
for the future of farms & food

Glenn and Lorraine Lenschow  
Thomas R. Smith  
Edward and Marilyn Campbell

Dale and Linda Drendel  
David and Judy Klussendorf  
Robert Harner



Through Harvest for ALL, KCFB members have contributed the equivalent of nearly 1.75 million meals to local food pantries.

**Donor**  
Dale & Linda Drendel  
William & Patricia Watson  
Alan & Gayle Volpp  
Dave & Judy Klussendorf  
John Van Bogaert  
Bill & Karen Collins  
Wayne Schneider  
Craig & Angela Bradley

**Beneficiary**  
Northern Illinois Food Bank - Milk 2 My Plate  
Northern Illinois Food Bank  
Burlington/Hampshire Food Pantry  
Northern Illinois Food Bank - Milk 2 My Plate  
Northern Illinois Food Bank  
St. Peter's Food Pantry  
Northern Illinois Food Bank  
Northern Illinois Food Bank



Food>Forward provides a source of unrestricted funds for the KCFB Foundation to use for Scholarship, Agricultural Literacy and support of FFA, 4-H and community service programs.

**Donor**  
Bill & Karen Collins  
Jay Schrock (in memory of Joel Schrock)

*Names shown are contributions received December 20, 2016 through January 20, 2017.*

## The times, they are a changin'

Interested in getting more information on upcoming events, membership benefits, Farm Bureau news, volunteer opportunities, etc. from Kane County Farm Bureau and other local sources? Give us your email address and we will add you to our list of members interested in being kept up to date on all the latest happenings within the organization.

As an incentive, Farm Bureau Members who send in their email address will be entered into a drawing for a \$25 Grocery Certificate card to Meijer. To enter, fill out the form below and mail it back to the KCFB office prior to March 24th.

Return to: Kane County Farm Bureau, 2N710 Randall Rd, St. Charles, IL 60174 by March 24th

Member Name: \_\_\_\_\_  
Email address: \_\_\_\_\_

## Touch-A-Tractor returns in April

Kane County Farm Bureau's 12th Annual Touch-A-Tractor event brings a little bit of the farm to the city April 7-9 at Kane County Farm Bureau, Randall Road at Oak Street, in St. Charles. Hours are Friday noon-4pm and Saturday and Sunday from 10am-4pm. New this year will be a \$2 adult or \$5 family donation request at Touch-A-Tractor. Attendees can show their Winner's Choice Raffle ticket stub for FREE admission. At the conclusion of the events on Sunday, April 9 the winning tickets will be drawn in the KCFB Foundation Winner's Choice Tractor Raffle.

If you'd like to bring an antique tractor, other farm equipment or livestock to Touch-A-Tractor, to add to the ambience and enhance the learning environment for our city neighbors, please call the KCFB at 630-584-8660.



## Touch-A-Tractor 'wish list'

KCFB is seeking donations of youth sized farm clothing/costumes (plus boots and hats), old kitchen utensils and cooking supplies, and various other items commonly found or used on farms. This list includes such items as plastic culverts suitable

for crawling through, clean plastic 30 gallon drums for a riding mower "train," and even large round or square hay or straw bales.

If you are interested in providing a donation, or know of a business or individual that might

be interested in doing so, please contact the KCFB office at (638) 584-8660 or feel free to stop by our office with your item(s).

Your donations will help make our 12th Annual Touch-A-Tractor a success.

### "Wish list" items wanted for Touch-A-Tractor

- Plastic culverts will make fun additions to our children's activities center. Both 30" and 60" are needed.
- We are in search of 30 gallon plastic drums that can be used to create a lawn mower powered train for children to ride in at the event.
- Round or square hay bales - we are seeking three of these to add to our Touch-A-Tractor children's activities area to be used for climbing and recreational purposes.
- Donations of old pots & pans, wooden spoons and the like will be used to make a "percussion string" in a tree on the Farm Bureau lawn. This sound machine is made by hanging pots, pans, and other noise makers from the lower branches of a tree.
- Farm related youth clothing, boots and hats and other farmed themed items to help with a new addition to the event which allows children to dress up like farmers for a photo-op.



## NATIONAL CHILI DAY



# CHILI COOK-OFF

Kane County Farm Bureau, Randall Rd at Oak St.- That's in Saint Charles, Pardner

## Thursday, Feb. 23rd, 2017



**BEST HOMESTYLE CHILI**



**BEST NON-TRADITIONAL CHILI**



**BEST WILDLIFE CHILI**

**BEST VEGETARIAN CHILI**



**PEOPLE'S CHOICE CHILI**

**ENTRIES**

Members -\$15 per category, non -\$25 Set up by 4pm.  
6 quarts. Trophy & 25% of category premium paid.  
Call 630 584-8660 to register by February 17.

**JUDGING**

4:30 pm, judges rank 'The Good, The Bad and The Ugly'

**TASTING**

5:00 -6:30pm or while they last!

'A Fistful of Dollars' (\$5 donation) for a 3 cup 'flight'.  
A bowl of your favorite 'For a Few Dollars More'



**Kane County Farm Bureau FOUNDATION**  
for the future of farms & food

A FUNDRAISER FOR COLLEGE SCHOLARSHIPS AND AGRICULTURAL LITERACY PROGRAMS