

Kane County Farmer



**KANE COUNTY
FARM BUREAU®**
Farm. Family. Food.™

Enhance the quality of life for member families;
Promote agriculture, farms & food; and,
Advocate good stewardship of our land and resources.

VOL. 83 NO. 7 JULY 2018

Summer Ag Institute educates Kane Co. teachers

Each summer, Suzi Myers, Kane County Farm Bureau's Ag-in-the-Classroom Coordinator puts together a vigorous schedule of presentations and tours for teachers in Kane County. These days are combined into the Summer Ag Institute 1 & 2, which teachers attend for college credits. Teachers have varying backgrounds and teach all the way from elementary to high school classes. Summer Ag Institute 1 is in June and Summer Ag Institute 2 is in July.

Summer Ag Institute 1 began on Tuesday, June 12, bright and early in the board room of the Kane County Farm Bureau. The teachers registered and got to know each other a bit over coffee and breakfast while Myers began the day with a Welcome, Introductions, and Course Overview. Presentations filled the day and were given by Myers for Ag in the Classroom, mAGic Kit, Julie Blunier from the Illinois Soybean Association, and Elizabeth Hagen Moeller from Kane DuPage Soil and Water Conservation District.

Wednesday June 13, marked the first day of tours. With the beginnings of what would be a perfect weather day, the teachers arrived excited for what the day would hold. After everyone was loaded up and belted in, the group was off to FONA, located in Geneva. Their first stop of the day would educate them about the flavor industry. Katie Sudler provided the group with a comprehensive and interactive pres-

entation on the importance of flavor in the food industry, how it's made, and interesting details and statistics about the company.

The next stop on the tour was Midwest Groundcovers in Maple Park. The group met Stan Schumacher, Vice President,

with over 25 years of experience working for Midwest Groundcovers, LLC., a company started by Danish immigrant, Peter Orum, in the late 1960's. Other companies under the Midwest Groundcover umbrella include Midwest Trading, a soil creator and supplier, and

GROmaster, a designer and manufacturer of irrigation automation needs for nurseries. Teachers toured the grounds, the soil plant, a nursery, and even the water plant. The teachers learned that annually, 34 million plants are grown here!

Lunch and a tour of Gould's Farm to learn about hog farrowing was next. The Kane County Corn Growers, represented by Dan Heinrich, Brad Fabrizius, and Bryan VanBogaert, provided the group with a delicious lunch of grilled pork chops and hearty sides. While everyone ate, Eldon and Sandy Gould gave a presentation on the history of the farm and when they established their hog barn – back in 1976. Eldon described their business of hog farrowing and the timeline while Sandy spoke about the business end of raising hogs as well as sharing with the group how their record keeping works for each sow and piglet. The tour concluded with a visit to the hog barn, but due to biosecurity concerns, it was viewed from windows on the

outside.

The day ended with a stop at Esther's Place in Big Rock. A family business opened and run by Natasha Lehrer Lewis, daughter of board member Donna Lehrer, is located in a converted Victorian House filled with products provided by their herd of sheep. With a focus on wool, the shop provides wool for spinning yarn, wool for felting, and various creations ranging from wool broaches to bracelets to scarves, and even light fixtures. The possibilities are endless! After a brief history and spinning demonstration, teachers sat down to a class on felting wool flowers. Each chose their colors of wool and began their own free-style flower. Using felting needles and a foam block, their creations came to life and each ended with wearable art.

Thursday, June 14, was the second day of tours and included four visits to agriculture-centric businesses. The group began their day in Waterman, IL

(continued on page 6)

Top photo: Stan Schumacher (standing), VP of Midwest Groundcovers LLC, leads the tour of their facilities in Maple Park. Started by a Danish immigrant, Peter Orum, in the late 1960's, Midwest Groundcovers has grown to be a diverse parent company to include Midwest Trading and Midwest GROmaster. The teachers toured the grounds, learning



about the reservoirs used for the water supply, the nurseries and the different types of plants grown, and even the science of making soils and the components they purchase and from where.



Bottom: Eldon Gould of Maple Park, owner and operator of Gould Farms since 1976, is shown here holding a piglet from the hog barn behind him. Combining a verbal presentation with a visual aids, he explains their hog farrowing operation to the gathered teachers. Everything inside the barn is held to the specifications needed to ensure optimal health for the sows and piglets, ranging from biosecurity to the inside temperature to the feed specifically formulated for each. (More photos on page 6)

45% savings at IL's largest outdoor water park!

Aussie-themed Raging Waves is not only located just south of Kane County in Yorkville, it's also Illinois' largest outdoor water park! Start your summer break with a visit to this family-friendly water park featuring 19 water slides, a separate kiddie pool area, wave pool, lazy river, 24 private cabanas and more.

Come and be one of the first to conquer Wonambi, the NEW

attraction that is one of only three in the United States! Open Memorial Day to Labor Day.

Tickets will be going fast, so stop by Kane County Farm Bureau to purchase individual discounted tickets for only \$18.00!

Regularly priced tickets are \$32.99 and online tickets are \$22.99, but with your Farm Bureau membership discount, you will save 45% off of the original price!



July Featured Product Bratwurst & Hot Dog Combo

Back by popular demand – the special for July is a Brat & Hot Dog combo. This box contains 10 award winning bratwurst and 10 quarter-pound all beef hot dogs. We are selling each delicious combo box for \$24 for PLUS members, \$25 for KCFB members and \$28 for non-members. This combo is sure to be a crowd pleaser at any cookout! Available during the month of July or while supply lasts.

Order your fresh peaches today! See page 8

Summer Ag Institute I June 12-14 & 19-21, 2018

June 12

- Course Overview Suzi Myers, Instructor
- Tour Overview
- Ag in the Classroom Presentation
- mAGic Kit Presentation / Commodity group presentations
- Soybean presentation Julie Blunier
- Kane DuPage Soil & Water Conservation District Elizabeth Hagen Moeller

June 13

- FONA (Flavors of North America), St. Charles
- Midwest Groundcovers, Maple Park
- Gould's Farm, Maple Park
- Esther's Place, Big Rock

June 14

- Monsanto, Waterman
- Dunteman's Sod Farm, Elburn
- Renshaw's Mushroom Farm, Batavia
- 360° Flavor and Spice, Geneva
- KCFB for apiary presentation by Harry Patterson

June 19

- CHS Elburn, Elburn
- Hickory Knolls Discovery Center, St. Charles
- Engel's Dairy Farm, Hampshire
- Gehrke Farm, Elgin

June 20

- Klein's Farm & Garden Market, Elgin
- Buck Bros Inc., Hampshire
- Nesler Grain Farm, Genoa
- Whiskey Acres, DeKalb

June 21

- Teacher presentation of display boards for their classrooms
- Commodity Speakers
- Nutrients for Life Haley Siergie

Kane County Farm Bureau extends its deepest thanks to all those who helped make this year's Summer Agriculture Institute a resounding success. The names, even of those who made presentations to the teachers, are too numerous to mention here. Additionally, we thank all those who helped with the set-up, logistics, lunches, materials and of course, cleaning up the farmsteads for the visits and tours. Your commitment to advancing education about what happens on your farm and America's farms is commendable – and much appreciated!

DATES TO REMEMBER

July

July 4
Office Closed/Independence Day

July 12
Board of Directors, 7:00pm

July 16
Fair Set-up, Young Farmers, 6:00pm

July 18-22
Kane County Fair

July 23-28
Young Leaders Industry Tour, Washington State

July 30, 31
IFB President's Conference, Normal

See you at the
Kane County
Fair!



Board Meeting review–June 5

The June meeting of the Kane County Farm Bureau Board of Directors was called to order at 7:00 pm on June 5, 2018.

Following roll call, the reciting of the Pledge of Allegiance, and the agenda review, Jodie Wollnik, Assistant Director, Water Resources Department, County of Kane, and John Peschke, TAC, were guest speakers and presenters of the Kane County Stormwater Management Ordinance Update. Tom Huddleston, Principal, Huddleston-McBride Drainage Contractors & TAC member, followed with information about the TAC committee. The committee is comprised of 20 engineers, himself included, and they are very considerate of agricultural issues.

Bill Collins gave the PR & Membership Report, focusing on the previous month's discussion of membership recruitment efforts for Associate, Regular,

and Professional members and the new promotions for each.

A written AITC report from Suzi Myers was presented, reminding Directors that Summer Ag Institute 1 was coming up the 12-14 and 19-21 of June. Also included in the report, was the AITC Advisory Council will meet on June 6 at 4pm.

Wayne Schneider reported on government affairs topics varying from possible farm tours for interested legislators, a possible "Adopt-A-Legislator" tour in Kane County, and recapped the participation of 13 members in the May FB Action Request. Members were thanked and as a token of the Farm Bureau's appreciation, they were offered a FREE Pillow Pet®.

The Young Farmers will meet on Tuesday, June 19 at the Biddle Farm for their annual summer BBQ. They will have dinner, a meeting, and then listen to guest

speaker Daniel Hueber from the Hueber Report. Also discussed was the Young Leader Industry Tour, July 23-28, focused in Washington State. Attendees this year will be Michael Long and David Marshall.

New Business items discussed included County Fair promotional ideas, needs, and attendees as well as a renewal of the Internship Agreement of two interns for the County of Kane.

Joe White's President's Report followed where he reported that the IAA FOUNDATION Golf Outing will be held on Thursday, June 14 and attendees will include White, Gehrke, O'Connell, and Kettelkamp. Each member will take Winner's Choice raffle tickets with them in hopes of selling additional tickets. Also noted is the IFB Farm Income and Innovations Conference will be held Wednesday, August 1, in Normal. White, Kenyon,

Arnold, and Gehrke will attend.

Arnold gave a brief Manager's Report and followed by circulation correspondence from: Brandon Griffith, thanking the KCFB FOUNDATION for his scholarship, and the Living

Well Cancer Resource Center, thanks for "Power Walker" Bridge Walk Sponsorship.

The next scheduled Kane County Farm Bureau Board of Directors meeting will be held on Tuesday, July 12, at 7:00pm.

KCFB member classifications

KCFB members fall into 3 main membership classifications as follows:

MM (Regular Member) – for farmers and farmland owners. Those who qualify for Regular member status will *only* be accepted as Regular Members.

PM (Professional Member) – for individuals that are

employed in farm, food or agriculture related careers and occupations, but their income is not directly from farming.

A (Associate Member) – for those who do not meet the qualifications of Regular or Professional membership.

Individuals (but not entities) who are Regular members, as well as all Professional mem-

bers, have voting privileges and elect Directors to provide governance for the Kane County Farm Bureau. Entities which have farming interests (partnerships, trusts, corporations) will only be accepted for membership as Regular members in accordance with KCFB bylaws, but have NO voting privileges.

Kane County Farmer's Markets

As the summer months begin, Kane County growers have a variety of fresh fruits and vegetables to offer you and your family, both at local roadside stands and at Farmers' Markets. KCFB's Bounty of Kane direc-

tory lists farmers' markets throughout the county and features a quick reference map and contact information for 38 farms that sell direct to consumers.

Visit www.bountyofkane.org to view the interactive map,

access web links, contact information for each of the farms and markets, and download a copy to print at home. Your support of local farmers at farm stands and farmers' markets is greatly appreciated.

- Aurora Farmers' Markets**
630-264-3370
Downtown – Aurora Transportation Ctr
233 N. Broadway (Route 25)
Saturdays, June 9 - October 20, 8am-Noon
- Market West – West Aurora Shopping Ctr.**
2131 W. Galena Blvd
Weds, Jul. 11 – Sept. 26, 10am-2pm
- Batavia Farmers' Market**
630-761-3528
N River Street (between Wilson & State Street)
Saturdays, Jun. 2 – Oct. 27, 8am-Noon
- Elgin Farmers' Market**
847-488-1456
Grove Ave between Chicago & DuPage Ct.
Fridays, June 1 – October 5, 3-7pm
- East Dundee Farmers Market**
847-426-4307
319 North River Street – The Depot
Saturdays/Sundays, May 12 – October 27, 8am-2pm
- Geneva French Market**
724-800-0102
Metra Parking Lot NW corner of South St. & 4th St.

- Sundays, April 27 - Nov. 16, 8am-2pm
- Geneva Green Market**
847-501-0430
327 Hamilton Street
Saturdays, Nov. 3 – Apr. 27, 9am-1pm
- Hampshire Farmers' and Outdoor Market**
847-683-1122
IL Rt. 72 & State Street
Every 3rd Saturday, 8am-12pm
- St. Charles Farmers Market**
Baker Memorial UMC, 4th Avenue & Route 64 (outdoor)
Fridays, June 2–October 27, 7am-1pm
630-584-6680 (outdoor)
- Friday, November–May, 9am-12pm
630-988-0705 (indoor)
- Sugar Grove Farmers Market**
Sugar Grove Village Hall Parking Lot, 10 Municipal Drive
630-466-1014 (outdoor)
Saturdays, Jun. 3 - Sept. 24, 8am-12pm
- Sugar Grove Library**
125 S Municipal Drive
630-466-4686
2nd Saturdays, October 14 – April 14,
11am-3pm (indoor)

Fresh from the farm & locally grown



Discover the **Bounty of Kane**
bountyofkane.org

Welcome new members

You receive the *Kane County Farmer* because you are a Farm Bureau member. If you are a farm operator or owner, you benefit from a local, state and national organization committed to agriculture and your way of life.

If you do not have direct ties to farming, your membership helps promote local farms and farming, encourages wise use of our limited natural resources and preserves farmland and our agricultural heritage while allowing you to enjoy COUNTRY insurance and the many benefits of one of Illinois' premier membership organizations.

We appreciate your membership and continued support and we welcome your comments on the content of the *Farmer*. We encourage you to make recommendations about farm, home, food, natural resources, renewable energy or agricultural heritage and history related topics for inclusion in future issues of the *Farmer*.

Attending the Kane County Fair?

Stop by the Kane County Farm Bureau building on the fairgrounds and download (or show) the IFB Member Benefits App on your smartphone for your choice of a FREE bottle of ice cold water, ice cream cone from the 4-H ice cream stand or an 8" hand-held fan. Farm Bureau – helping members save money every day – and cool down at the Fair!



Download the App
For A **FREE** WATER OR ICE CREAM
or **FREE FAN**
FROM THE 4-H STAND (while supplies last)

• 302,000 National & Local DISCOUNTS

- Attractions & Tours
- Automotive
- Cellular Phones
- Concerts & Events
- Electronics
- Everyday Living
- Fashion & Beauty
- Gifts & Flowers
- Health & Wellness
- IL Farm Bureau Exclusives
- Movie Tickets
- Restaurants
- Travel
- Unique Experiences

KANE COUNTY FARM BUREAU

KANE COUNTY FARM BUREAU BOARD ATTENDANCE												
JANUARY 2018 THRU DECEMBER 2018												
	JAN	FEB	MAR	APR	MAY	JUN	JULY	AUG	SEP	OCT	NOV	DEC
C. BRADLEY	X	X	X	X	X	X						
B. COLLINS	X	X	X	X	X	X						
C. COLLINS	X	X	X	X	X	X						
J. ENGEL		X	X	X	X	X						
G. GAITSCH		X		X	X							
B. GEHRKE	X		X	X	X	X						
W. KECK		X	X	X	X							
M. KENYON	X	X	X	X	X	X						
K. KETTLEKAMP	X	X	X	X	X	X						
D. LEHRER	X	X	X	X	X	X						
A. LENKAITIS*				X	X	X						
N. LONG	X	X	X	X	X	X						
D. PITSTICK	X	X	X	X	X	X						
W. SCHNEIDER	X	X	X	X	X	X						
J. WHITE	X	X	X	X	X	X						

*Elected to the board in April 2018

Kane County Farmer

KANE COUNTY FARM BUREAU
PUBLISHED MONTHLY

Steven J. Arnold, Editor

Suzi Myers, Ag Literacy Coordinator
Audre Pack, Training Specialist
Elizabeth Polovin, Member Services Coordinator
Marty Keltner, Communications Specialist

OFFICE: Randall Rd. between Routes 64 & 38
Address: 2N710 Randall Rd., St. Charles
PHONE: 630-584-8660
info@kanecfb.com www.kanecfb.com
OFFICE HOURS: 8:30-4:30 Monday through Friday
(USPS No. 289700)

POSTMASTER: Send address changes to Kane County Farmer
2N710 Randall Rd., St. Charles, IL 60174
Periodical Postage • Paid to St. Charles, IL 60174
Year Subscription: \$2.00

<p>■ DISTRICT 1 Aurora, Sugar Grove, Big Rock Twnshp. Nan Long 11461 E. County Line Rd. Big Rock, IL 60511 630-557-2517</p> <p>■ DISTRICT 2 Kaneville, Blackberry, Gen./Bat. Twnshp. Bill Collins 815-693-7214 Geneva, IL 60134 630-484-6852</p> <p>Karl Kettelkamp OS860 Rowe Rd. Elburn, IL 60119 630-365-2713</p>	<p>Joe White President 47W727 Main St. Rd. Elburn, IL 60119 630-557-2517</p> <p>■ DISTRICT 3 Virgil, Campton, St. Charles Twnshp. Andrew Lenkaitis 6N707 Corron Rd. St. Charles, IL 60175 630-513-9980</p> <p>Chris Collins 1143 Anderson Elburn, IL 60119 630-934-4642</p> <p>Dale Pitstick 128 N Hadsall St. Genoa, IL 60135 630-816-0223</p> <p>■ DISTRICT 4 Burlington, Plato Elgin Twnshp. Beth Gehrke 12N860 US Hwy. 20 Elgin, IL 60124 847-697-2538</p>	<p>Mike Kenyon Secretary/Treasurer 1250 E. Main St. South Elgin, IL 60177 847-741-1818</p> <p>Craig Bradley 37W791 Orchard Lane Elgin, IL 60124 847-888-2380</p> <p>■ DISTRICT 5 Hampshire, Rutland, Dundee Twnshp. Joe Engel 516 Sawgrass Ln. Hampshire, IL 60140 847-347-5561</p> <p>Gerald Gaitsch 10613 Brittany Ave. Huntley, IL 60142 847-669-2003</p> <p>Wayne Schneider Vice President 721 Lindsay Lane West Dundee, IL 60118 847-428-0488</p>
--	--	--

Member to Member Service Opportunities – Let Us Connect You!

Agriculture is like any other industry, sometimes it takes "who you know" to get things done. In many cases, Farm Bureau members often need services that other Farm Bureau members can provide, but are unsure of how to be connected.

This is the perfect opportunity to contact us! We are happy to share information and we would like to feature what service you offer in our *Kane County Farmer* Classified Ads. Call us at 630-584-8660, e-mail us at info@kanecfb.com, or better yet, stop by to chat with us at our office, 2N710 Randall Road, St. Charles, IL 60174, about what services you offer that other members might be in search or in need of.

COUNTY FAIR ANTICIPATION

By Marty Keltner



Every summer the Prairie County Fair dates would appear in the horizon on our calendars. Our County Fair was always towards the beginning of August and was known as “The Biggest Little Fair in All of Eastern Montana.” It was definitely THE county-wide event of the summer, often bringing together families from far and wide to celebrate 4-H and individual accomplishments, local thespians to put on a play, the highly-anticipated rodeo, and the ever-exciting demolition derby.

It always felt “big” to me, but then again, I never attended the Illinois State Fair to compare! Before I was old enough to join 4-H, I remember bringing vegetables, baked goods, or a beginner sewing project to exhibit in the fair, in the hopes of winning a blue ribbon and of course, the recognition of friends, family, and neighbors. I longed to win a big, beautiful purple ribbon as well!

After joining 4-H, my whole world changed. I could now bring animals to the fair! How exciting and different! Starting out small, the very first animal I decided to take to the fair was a lamb named Sarah. Raised on a beef cattle ranch where we also raised quarter horses and Yorkshire hogs, I really didn’t have much experience around sheep or lambs with the exception of limited encounters while helping the neighbors dock their lambs each summer. All I knew is it was a lot easier to grab a lamb out of the herd to dock than to grab a calf at brandings, that had to be left to ropers on horses!

This Hampshire lamb and I were instant buddies. I loved her and she loved me. I would feed her twice a day during “chore time” and at night or on the weekends we would play and spend some serious time together;

she was like the dog I never had. Training her was also easy because she was so tame and not to mention, smart. Yes, smart! I say that because the following 3 lambs (Pork & Beans and Samantha) I took to the fair did not exhibit this quality nor enthusiasm for being my best buddy. We had our struggles.

Other animals I took to the fair included hogs and horses, 3 years of hogs and 2 years of horses. I will keep my story about my horses short – a Sorrel named Poncho and a Grulla named Wispy – were probably the most stubborn, non-trainable, impossible-to-ride horses in the history of our ranch. I seemed to be cursed when it came to picking a horse that would perform when it came show-time. Years later I even had the pleasure of being bucked off by Poncho, this time I did not get back on the horse again, I let my Uncle and he got bucked off also!

On the opposite end of the spectrum, taking hogs to the fair was a breeze! They were so intelligent and easy to handle. They could be a bit stubborn, but after all of the work and hours and hours of training I had to dedicate to the lambs and horses, I was amazed. Easy to clean also – no shearing, carding, combing, obsession with keeping the wool white, trimming, pulling, clipping, filing, etc. Constantly keeping your hog’s nose clean was about the extent of difficulty!

It’s been many, many years since I’ve been home to attend the Prairie County Fair, but thanks to Facebook I’m able to still feel like I’m there. I love seeing the 4-Hers with their show animals, people posing with their winning pie, and even video clips of the demolition derby – dust flying, cars crashing.

‘Follow the Food’ bus tour—a morning with Northern Illinois Food Bank

Each year, Northern Illinois Food Bank hosts a “Follow the Food” bus tour, showcasing different food pantries, retailers, and farms located in their service area. The tour takes approximately five hours and is filled with valuable information on food insecurity not only in Kane County, but in all 13 counties the Food Bank serves.

After learning about the Food Bank’s hunger relief programs, the group then packed backpacks in the facility’s Volunteer Hall. Each backpack will provide school-aged children with meals to take home on the weekends.

Ten minutes, 44 backpacks, 628 pounds, and 568 meals later, the group began a tour of the facility, then on to Lemay Middle School, where Marjory Lew-Brady and Erica Olson of We Go Together manage a community market. Some interesting details about this facility include: 15% percent of families visit every week, 25% visit frequently, and eggs and milk are the most sought after, but least donated items. Many families who visit

this pantry do so because school-based pantries provide them with a feeling of dignity; the reason they are there is often not obvious, because schools are busy places.

The next stop on the bus tour was the Walmart on Smith Road in St. Charles. Tom Hong, Northern Illinois Food Bank

350 retailers that contributes millions of pounds of food each year to Northern Illinois Food Bank.

With two stops left, the group headed to Resurrection Food Pantry, a neighborhood food pantry located inside Resurrection Catholic Church in Wayne. Pantry coordinator Pat Wheaton shared that many of the donations they receive are from Jewel-Osco and Costco, supplemented by 3,000-4,000 pounds per month of food and necessities from the Food Bank.

Visiting a community garden was the last stop of the tour before returning to the Food

Bank. Pushing the Envelope Farm is unique in that the owners of family-run Continental Envelope, Trisha and Fred Margulies, created the farm at the encouragement of their children, right next to their 80-year-old business. The garden is open to any members of the public interested in renting a plot, and also has many volunteer groups that tend to the various areas, provide upkeep, refurbish raised beds, etc. The Margulies encourage (continued on page 6)



Eighteen individuals participated in the April 28 Northern Illinois Food Bank (NIFB) “Follow the Food” Tour. Hunger awareness, needs and solutions were focuses of the tour.

Retail Relations Liaison, guided the group from department to department, explaining how each one contributes to the food donated to the Food Bank. To make pulling food for donation easy for employees, Guy Lambesis, the store manager and a strong advocate for hunger relief, has come up with the “WIBI” rule (“Would I Buy It?”). With this question, along with clear signage in each department for what can be donated and what cannot, Walmart is one of the more than

Joust your way to Medieval Times savings

Just another perk of being a Farm Bureau member is saving 25-40% on tickets at Medieval Times. Feasting, fighting, and fun, experience the “new show”, featuring Queen Maria Isabella, on the throne! With a run time of two hours, you’ll see six competing knights fighting with real weapons, riding beautiful Spanish horses, and all for the attention of the Queen! Devour a four-course meat or vegetarian feast while you cheer on your favorite knight as he battles his way to the top, all from the comfort and safety of your seat.

Log on to <http://partners.medievaltimes.com/employee/home.aspx?pid=B456C364-D B D 3 - 4 2 5 B - 9 7 8 7 - 073D5E375EF6> to choose your dates and times and then marvel at the savings! 40% off adult tickets means a regular price ticket of \$61.95 drops down to

\$37.17 for Farm Bureau members. 25% off a regular price child’s ticket (12 and under,) \$36.95 becomes \$27.71. Group packages, for 15 people or more, are also available.

If you have any questions or need any help booking tickets, please stop by our office at 2N710 Randall Road, St. Charles, IL 60174 and pick up some Medieval Times swag – we have calendars, koozies, key-chains, and much, much more!

Traveling to another city and want to go to a show? Locations

include: Orlando, FL; Buena Park, CA; Lyndhurst, NJ; Dallas, TX; Toronto, Canada; Myrtle Beach, FL; Baltimore/Washington, D.C.; and Atlanta, GA.



Win this truck!

The Grand Prize for the Kane County Farm Bureau FOUNDATION’s “Winner’s Choice Raffle” this year is a light blue and white 1965 Ford F100, 352 horsepower, V8, 4 speed transmission pick-up, and boy is it a beauty! Tickets are 1/\$15, 2/\$25, or 5/\$50, and you can be the lucky winner of this truck OR one of two other Grand Prizes – a John Deere X350 riding lawn more or \$3,500 in cash.

Don’t dilly dally as the drawing date, July 22 at 3pm, right after the 4-H Blue Ribbon sale, will be here before you know it. Other prizes include

\$500 in groceries for 2nd place, \$500 in fuel for 3rd place, and \$250 Kane County Farm Bureau Bucks for 4th place. If you win, you can’t lose!

Call us at 640-584-8660 or stop by our office* or building at the fair to buy your tickets – we take cash, check, or credit card (Visa, MasterCard, Discover) and with all proceeds benefiting Ag in the Classroom and Ag-related career scholarships, you’ll win in more ways than one.

You can also fill out and mail in the form on page 6.

*2N710 Randall Road, St. Charles, IL @ Oak Street – in front of Costco.



Beef store is now open!
By appointment only

farmdirectBLACKANGUS.com

100% hormone free beef.
Selling individual cuts. Buy as little or as much as you want.

815.895.4691
Mark & Linda Schramer, Owners
8N840 Lakin Road, Maple Park

Sample Packs make great gifts!

2nd Location in Wasco

TRELLIS FEED & SUPPLY

40W296 Wasco Rd. Wasco, IL
2N492 Kirk Rd. St Charles, IL
630-584-2024

Locally Owned & Operated Feed Store where everyone is treated like family

PURINA Nutrena BUCKEYE NUTRITION TRIPLE CROWN KENT Progressive NUTRITION

AG LITERACY CORNER

By Suzi Myers



As I write this article, I'm in the middle of teaching our Summer Ag Institute for teachers. This is my 14th group of teachers to lead through learning about agriculture in Kane County and how it touches our lives from the minute we awake in the morning till we fall asleep at night. From the sheets on your bed, the food you eat, and the fuel that allows you to go wherever needed that day, agriculture makes it possible. As I learned in a class long ago, "If you can't grow it, it needs to be mined"...any part of our lives

begin with one of the two processes.

I digress...this week one of the teachers pulled me aside and said how much was gained by their hearing the farmer's perspective. The farmers spoke of all the "pieces" that they put together to farm to the best of their abilities. Those of us who are generations away from being part of a farm family, find agriculture somewhat mind boggling. There are indeed, many pieces to the puzzle of raising livestock or crops in the best possible way, be they con-

KANE COUNTY FARMER

ventional or organic pathways. Agriculture is no longer the family farm that grows enough food to support their own family, it is now the family farm that specializes. We have hog farms, grain farms, vegetable farms, Christmas tree farms, pumpkin farms, organic farms, CSA's, the list goes on and on.

Farmers are no longer the guy in coveralls with a piece of straw in his mouth...they are female and male college educated, computer savvy people. Technology is their friend and they embrace its ability to enhance their farming.

Precision farming is taking place. The farmers are being very precise in how they plant, fertilize, control pests, and har-

vest the crops. They are mindful of the blessings of our incredibly fertile Illinois soils, as well the waters that flow through our rivers and streams. Many initiatives have been put in place to safeguard these resources for our future. A future that is looming with a population of over 10 billion mouths to feed.

Many thought provoking events take place during our Summer Ag Institutes, but the one I experience most often, is the ingenuity of our farm families. Unlike the rest of us, if their children want to follow in their footsteps, the children need to think of a new way of creating an income from the land that already supports their parents. Many young children

grow pumpkins or decorative harvest crops to save up for college. Some of the children have expanded the farm when they become an adult to include other crops, leasing land in their own names, buying machines to complement the family stock, or other new and different ideas. As we speak with the farmers, all these aspects of the industry rise to the forefront.

My thanks go out to each teacher who takes the time to learn about agriculture so they can pass the information on to their students, as well as all the farmers who are willing to speak with us about their profession. The combination of both creates a wonderful experience, one that never gets old to me.

Students learn about farming during SPROUTS

During Kane County Farm Bureau's annual Spring Program of Reading & Outreach to Teachers and Students, or SPROUTS, four Farm Bureau volunteers and one KCFB staff member read the book, *Heartland* in area third grade classrooms. The book, written by Diane Siebert and illustrated by Wendell Minor of Aurora, gives students a look at life on a farm, from the perspective of the land. Some of the SPROUTS volunteers have farming experiences that help students relate to farm life in America's Heartland.

This year SPROUTS reached 1,350 students in 45 classrooms. Each teacher received a copy of

the book *The Girl Who Thought in Pictures, The Story of Dr. Temple Grandin*, written by Julia Finley Mosca and illustrated by Daniel Rieley, along with a set of 30 urban-themed Ag Mags, an AITC calendar and follow-up activities to use in the classroom.

A memorial fund established in memory of long-time Farm Bureau volunteer and former KCFB Director Bob Konen, and funded by family and friends, has been designated to fund SPROUTS. Special thanks to Alyce Konen, for continued financial support of this legacy to her husband Bob.



Students at Holy Angels School in Aurora are shown taking a closer look at farm machinery (toy replicas) and crops. The children actively participated in the story that was read, analyzed the props, and asked many thoughtful questions about agriculture and the ways of farming.

Thanks to the following volunteers who made this year's SPROUTS program a success:

**Sandy Gould • Beth Gehrke
Ryan Klassy • Jan Strauss**

Thanks to the third grade teachers at these schools for welcoming our SPROUTS volunteers to learn about farming and food.

Rollins School, Aurora	Prairieview, South Elgin
Greenman School, Aurora	John Stewart Elementary, Elburn
Holy Angels, Aurora	McDole Elementary, Montgomery
Hermes School, Aurora	Liberty, Carpentersville
Liberty, Carpentersville	Otter Creek, Elgin
Otter Creek, Elgin	Hillcrest School, Elgin
Hillcrest School, Elgin	Fox Meadow, South Elgin
Fox Meadow, South Elgin	Wayne Elementary, Wayne

Got honey?

We sure do! We sell locally collected honey from right here in Batavia. The beekeeping of White Farms has been a family activity for more than four generations. Come in to our Country Store and choose from 4 different sizes ranging from 12 oz. to 2 lbs. Local honey has many different benefits, including helping to build immunity to some seasonal allergies. Honey also is a natural energy source, antioxidant powerhouse, natural cough syrup, and promotes sleep!

We also have a supply of Happy Bee soaps, handmade by local beekeeper Harry

Patterson. Stop in and check out these products and more at the KCFB Country Store, open Monday-Friday, 8:30-4:30pm.



Arbor Joe

Summer Tree Pruning

www.ArborJoe.com

ISA Certified Arborist

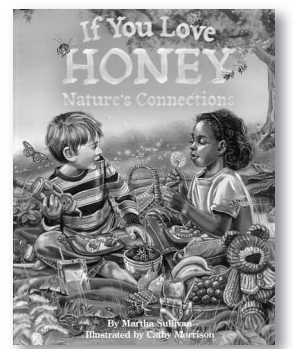
(224) 789-8773

Book of the month

"Honey is a sweet gift from nature – ALL of nature, actually. Honey is linked in a very real way to dandelions, earthworms, mushrooms, the old oak tree and even the blue jays squawking in its branches. Take another look at honey. If you love nature's honey, you are sure to love nature too. How sweet it is! The author fell in love with bees as an amateur beekeeper, and then learned to appreciate flowering plants – even ones she once considered weeds – as an

important nectar source. And then she realized how the plants were connected to insects and soil. A simple but accurate diagram in the back matter explains how bees make honey and also pollinate plants, as well as the role of beneficial insects and decomposers. Also presented are activities and a recipe for children." — Amazon

Our library here at Kane County Farm Bureau has many books for children and adults to check out. Stop in and browse.



If You Love Honey—Nature's Connection by Martha Sullivan

Helping you protect what matters most

COUNTRY FINANCIAL®

AUTO | HOME | LIFE | BUSINESS | RETIREMENT

	Bob Effner , CLF®, LUTCF St. Charles – Elgin Agency Manager St. Charles 630-584-0001		Edward Stuehm Geneva 630-845-8245
	Todd Wilcox St. Charles 630-762-1326		Michael O'Brien Geneva 630-762-0852
	Bobbi Boston St. Charles 630-485-5155		Victor Alvarado Geneva 630-492-5290
	Keith Eakins St. Charles 630-762-1324		Luke Fawkes Elgin 847-742-0001
	Kelly Landorf St. Charles 630-762-1328		Sherry Lochen Elgin 847-742-0001
	Donna Tonovitz St. Charles 630-549-7694		Bob Riedel West Dundee 847-428-5434
	Orazio Difruscolo St. Charles 630-549-7696		Gary Bolger West Dundee 847-531-6110
	Bob Kearns S. Elgin 847-888-3200		David Murray Montgomery 630-897-2364
	Ashraf Geroges Aurora 630-898-3750		Sherri Schramer Elburn 630-365-9500
	Dominick Davero Elburn 630-365-3737		Chuck Quick Hampshire 847-683-2100
	Josh Austin Hampshire 847-683-2100		Dan Cooper Sugar Grove 630-466-9600
	Ted Schuster Sugar Grove 630-466-9600		Sonny Ellen Sugar Grove 630-466-9600

Auto, home and business insurance policies issued by COUNTRY Mutual Insurance Company®, COUNTRY Preferred Insurance Company® and COUNTRY Casualty Insurance Company®. Life insurance policies issued by COUNTRY Life Insurance Company® and COUNTRY Investors Life Assurance Company®. Fixed annuities issued by COUNTRY Investors Life Assurance Company®. All issuing companies located in Bloomington, IL.



Farm Facts @ Fun

Compiled by Suzi Myers



July trivia

- * Sometimes the hot, long days of July are called the "dog days of summer".
- * July is sometimes called the Hay month because the grass dries out due to a lack of rain and can be made into hay.
- * July 4, 1776 - The U.S. Declares Independence
- * 1776 - The Liberty Bell rings
- * July 3, 1863 - The Battle of Gettysburg ends
- * July 22, 1873 - Louis Pasteur received a patent for manufacture of beer and treatment of yeast, which would later influence his discovery of the process known as pasteurization.
- * July 21, 1875 - Mark Twain's novel *The Adventures of Tom Sawyer* was copyright registered
- * July 23, 1906 the song "America the Beautiful" was copyrighted by Katharine Lee Bates
- * July 19, 1921 - The name Breyers Ice Cream was trademark registered
- * July 27, 1921 - Banting and Best first isolated insulin.
- * July 12, 1927 - Green "Giant"

- Great" Big Tender Peas were trademark registered.
- * July 7, 1930 - Building of Hoover Dam begins
- * July 30, 1933 - Monopoly board game was copyright by Charles Darrow, who later sold the patent to Parker Brothers and became the first millionaire game designer.
- * July 24, 1956 - A patent for oral form of Penicillin was given to Brandl and Margreiter
- * July 20, 1969 - Armstrong walks on the moon

Since July is a month full of sunshine, it is one of the months to "Make hay while the sun shines." Farmers work hard to harvest the hay throughout the summer months. Both hay and straw are stacked in the form of bales in a barn, after they are dried adequately. But in comparison, straw bales are much lighter than that of hay. Simply put: Straw is a by-product, hay is grown or "Hay is for horses, straw is for houses."



Four-straw reviews from hay consumers ★★★★★



STRAW Straw is a by-product of the grain harvest, like wheat, oats and barley. It is the dried stalks of the grains.

COLOR: Straw is yellow or golden in color - like straw hats and baskets.

HOW IS IT MADE? The hollow stalks leftover after threshing are dried, then cut and formed into bales. Bales of straw have very little moisture content.

NUTRITIONAL VALUE: There isn't much nutritional value in dry straw, therefore it's not usually fed to livestock.

USES: Because it's light and fluffy, it makes a nice bedding for animals. Straw can mulch your plants and keep the soil moist, keeping the top layer from drying out. It can also suppress weeds and it will compost naturally into your garden over time. Did you know straw is used as an ingredient in biofuels, packaging materials and paper manufacturing?

HAY Hay is dried legumes such as alfalfa and clover or grasses such as timothy, oat, fescue and Bermuda. Most of the time, seeds are still intact in a hay bale.

COLOR: Hay is green, especially when seen next to the more golden hue of straw.

HOW IS IT MADE? Plants are harvested when alive and usually cut before the seed matures, then dried. Hay bales sometimes have too much moisture content on the inside and can mold (bad for animals) or even burst into flames because heat increases on the inside due to the decomposition process.

NUTRITIONAL VALUE: There are many types of hay used to feed livestock. Some contain more protein and carbohydrates to fuel hard working horses. Specific types of hay are fed to animals depending on their nutritional needs.

What are hay bales?

Hay bales are a food source. That is the first and perhaps most important difference. Hay is actually a plant that is cut when it is alive and full of grain. The purpose of the hay is to feed animals. Straw, on the other hand, is simply the stalks of standing plants that contain no grain.



What is hay made of?

Hay is made from grasses that are planted and grown specifically for animal feed. The plants are allowed to grow to a certain level of maturity then cut, left to sun dry, then baled. Hay can also be made from several species of legumes such as alfalfa, clover, and a few others.

Where does hay come from?

Alfalfa hay originated in before 700 B.C. and was brought to the United States in from South Africa during the gold rush. From there the crop spread to the Midwest. The name "alfalfa" comes from the Arabic, Persian, and Kashmiri words meaning "best horse fodder" and "horse power."

Straw and hay recipe

(from Genius Kitchen)
 (Spinach fettuccine is the hay and regular egg fettuccine is the straw)

Ingredients:

- 1 (8 ounce) package regular egg fettuccine
- 1 (8 ounce) package spinach fettuccine (can use egg and boil in spinach juice)
- 1 cup thinly sliced julienne cut ham or 1 cup Canadian bacon
- 1 cup sliced mushroom, of your choice (optional)
- 1 cup frozen green pea (optional)
- 1/2 cup sweet butter
- 1 1/2 cups heavy cream
- 1 1/4 cups grated parmesan cheese
- 1/2 teaspoon salt
- 1/2 teaspoon pepper

Directions:

1. Cook pasta separately.
2. If using peas, cook them with either pasta during the last few minutes.
3. Drain and set aside.
4. In large, heavy skillet, melt

5. butter over medium heat.
5. Stir in ham (or Canadian bacon) and mushrooms (if using).
6. Cook until mushrooms are tender.
7. Season with salt and pepper.
8. Add cream.
9. Cook, stirring constantly until mixture thickens.
10. Toss both pastas (and peas, if using) together in a large bowl.
11. Divide pasta among 6 deep pasta or soup bowls.
12. Divide sauce and spoon over each portion.
13. Top each with a generous amount of Parmesan cheese and serve.



Congratulations

Marisa Henson of Pingree Grove! Her name was chosen from the entries received for correctly completing last month's Word Search Puzzle. For her participation, she receives a combo box of 10 Brats and 10 Hot Dogs from Inboden's Meats! Thank you, Marisa for reading the *Kane County Farmer* and continue to watch each month for more great opportunities from the Kane County Farm Bureau.

July is national:

- Hot Dog Month
- Picnic Month
- Blueberry Month

Special Days in July:

- 4th Independence Day
- 6th National Fried Chicken Day
- 9th National Sugar Cookie Day
- 15th Cow Appreciation Day
- 18-22nd Kane County Fair
- 20th National Lollipop Day
- 21st National Junk Food Day

Straw and Hay

E	Q	V	A	Z	L	K	G	N	I	B	E	S	J	N	T	Z	N	M	L	ALFALFA
R	S	O	Q	Y	Z	R	U	W	J	U	N	T	S	M	Q	W	M	I	K	BALE
U	I	N	L	W	A	T	B	F	A	B	I	E	M	E	I	L	V	L	D	BARLEY
T	H	F	C	I	R	W	B	T	C	Y	H	K	B	G	M	E	S	R	N	BASKETS
S	S	W	N	I	Z	S	O	K	J	P	S	S	N	E	S	U	I	D	K	BEDDING
I	F	S	T	I	S	A	T	U	N	R	N	A	J	T	D	E	G	O	Z	BYPRODUCT
O	B	I	T	S	E	V	R	A	H	O	U	B	O	Q	D	D	K	E	Y	CLOVER
M	O	A	I	Y	N	U	T	T	S	D	S	C	I	I	Q	V	I	D	L	DRIED
N	C	B	A	L	E	D	H	B	K	U	K	J	A	L	H	T	D	N	U	FOOD
N	N	F	O	O	D	R	V	C	M	C	S	E	S	S	A	R	G	S	G	FUEL
J	H	W	W	D	E	L	X	K	L	T	B	R	R	L	R	V	I	S	Z	GRAINS
S	Z	Q	O	S	B	S	R	R	V	C	O	D	E	M	N	L	C	K	W	GRASSES
H	I	D	H	R	H	Z	V	T	G	X	W	Y	H	V	N	E	L	L	X	GROWN
Y	Y	I	N	A	G	A	Z	A	W	A	E	H	O	N	O	O	U	A	D	HARVEST
J	N	F	W	C	A	X	Y	U	R	L	N	K	L	Z	D	L	X	T	C	HAY
G	K	S	F	K	D	X	M	T	R	F	E	O	L	S	O	I	C	S	Q	HOLLOW
A	B	P	S	E	T	I	S	A	X	D	U	O	O	E	R	S	K	E	A	LEGUMES
A	L	F	A	L	F	A	B	E	Y	S	D	S	W	Y	T	A	K	S	B	LIVESTOCK
W	U	L	E	U	F	E	W	W	O	M	I	X	R	A	X	C	I	F	A	MOISTURE
O	U	Q	U	P	D	P	F	X	S	L	E	R	O	R	Y	N	D	W	B	NUTRITION
																				OATS
																				STALKS
																				STRAW
																				SUNSHINE
																				THRESHING

Name _____
 Address _____
 City _____ State _____ Zip _____
 Telephone (____) _____ Email _____ Age _____

Return to: Kane County Farm Bureau, 2N710 Randall Road, St Charles, IL 60174 by July 15, 2018 to be entered in our drawing for a summer themed prize.

Summer Ag

(continued from page 1)

at Monsanto where they toured the facility. John Hardin from the Production Research team explained how hybrids are made, what traits are desired, and that testing occurs year round because locations like Hawaii and South America are able to grow plants while our fields are dormant.

As the group toured the facility, they stopped in the lab where John Kinsey, retired plant researcher showed them how pathogens are created and inoculated. These inoculated seeds are then planted and outcome data is collected to show the plants resistance to the disease. The last stop in the building was in the Entomology Department. Amanda Erleneach, Entomologist, explained her role in raising "pests" like the Western Corn Root Worm (actually a beetle), which plague farmers' corn fields and cause extreme dam-

age to the root system, preventing the plants from growing and reducing productivity.

From there, the tour continued to Dunteman's Sod Farm in Kaneville. Bill Dunteman greeted the teachers and provided them with a live display of turf being harvested, rolled, palletted, and placed on the truck for transport. With 450 acres to grow and harvest, they are one of the larger operations that supplies the surrounding area with 100% Kentucky Bluegrass sod. Since sod needs to be laid right away, it is preferable to harvest in the morning and deliver the sod rolls to the buyer.

Renshaw Mushroom Farm in Batavia and 360 Spice in Geneva ended the travel tour that afternoon. Cari Shaw and Lauren Erdmanis, Co-Founders of Renshaw Mushroom Farm, showed the group how their mushrooms are grown, the different varieties, and explained how they got started. Both from different walks of life, but local,

they decided that they wanted to grow mushrooms in an area where there are no local suppliers, stemming from their love of growing vegetables for their families.

360 Spice in Geneva included a tour of the back room where spices are freshly ground and also discussion around the complex creation of spices there at the store. The employees are encouraged to create blends and the group enjoyed exploring the store, tasting different combinations, and even doing a little shopping! The day ended back at the Kane County Farm Bureau with a presentation from local honey producer, Harry Patterson.

June 19th and 20th will include more visits for the group of teachers and will include a dairy farm, coop grain elevator, vegetable farm, grain farm, and even a distillery. More exciting destinations that will be reported on in August.

Right: Proud creators of wearable art, this year's group of teachers learned how to felt flowers using various felting fibers at Esther's Place in Big Rock. Back row, left to right: Jennifer Hoth, Suzi Myers, Darla Hayman, Breanne Kahl, Jennifer Hoemann, Ashley Ritter, Tom Froats. Front row: Carrie Workman, Stephanie Thatcher, and Tina Schertzer.



Monsanto, located in Waterman, was the first stop on the third day of the Summer Ag Institute for Kane County teachers. Pictured here, the teachers learn from John Kinsey, retired plant researcher, how those working in the



lab create pathogens to inoculate seeds. Pictured, this tray of sorghum seeds are covered in mold spores. These seeds will be planted and data will be collected from the plants either showing the desired traits for disease resistance or their susceptibility to disease.

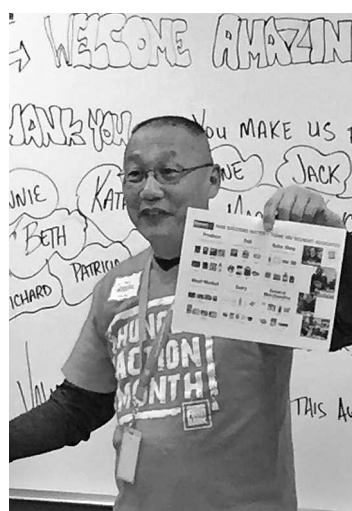
Western Corn Root Worms are actually beetles and are one of the most destructive insects that farmers must combat to keep their corn fields healthy and productive. Amanda Erleneach is one of the Entomologists working at Monsanto to raise these beetles. The teachers are shown getting a first-hand look at one of the cages used to feed, water, and raise these adult beetles, which are counted and information meticulously logged for recording purposes for both the USDA and internal use. More photos on page 1.

Follow the Food

(continued from page 3)

age those who garden at their facility to donate excess fruits and vegetables to local food pantries or the Food Bank, and also have their own donated plot. Overall, the experience was an amazing opportunity to enlighten all who attended.

For more information or to get involved, you may visit www.solvehungertoday.org or call 630-443-6910.



Tom Hong, NIFB Retail Relations Liaison, holds a copy of a food donation sign located in Walmart's break room. The sign indicates what food items can be donated from each department of the store – produce, deli-meat market, dairy. Employees follow this guide for pulling food to donate to the NIFB. Walmart's partnership NIFB drastically reduces food waste from the store.

Attention

4-H Livestock Exhibitors

Are you a 4-Her attending the Kane County Fair who is showing or exhibiting livestock? Stop by the Kane County Farm Bureau building, bring your exhibitor card, and while supplies last, we'll give you a FREE t-shirt!

"Show Your Passion" t-shirts showcase many of the different animals you might be bringing to the fair – there is something for everyone – horses, goats, bunnies, steers, pigs, lambs, chickens, and cows. This eye-catching red t-shirt will sure to be a favorite to show off your favorite critters.

Northern Illinois Farm Bureaus GROUP TRAVEL DESTINATIONS:

Colorado Trains Tour
(Sep. 14-22, 2018)

Tournament of Roses
(Dec. 30, 2018- Jan 4, 2019)

Hawaiian Islands & cruise to Vancouver
(April 17-29, 2019)

For costs and a detailed itinerary, contact Liz at the KCFB, 630-584-8660

Also in the works for 2019:
California Wine Country & Lake Tahoe, July
Pacific Coast Journey, September

2018 DeKalb Co. barn tour to feature Paw Paw

The DeKalb County Barn Tour plans to stretch far and wide this year – into the Paw Paw-Earlville-Leland area.

The fifth annual barn tour will take place Saturday, August 11 from 9am to 4pm in southwestern DeKalb County. Highlights of this year's barn tour include an octagon barn as well as an octagon corn crib.

Tickets are still only \$25 per carload and can be purchased at the starting point, the Rollo Town Hall on Suydam Road, the day of the tour. The souvenir Guide Book, which serves as your ticket, is also available online at dekalbcountybarntour.yapsody.com or at each site the day of the event. Illinois artist David Allen Badger has provided hand-drawn sketches of each of the eight barns for the Guide Book, which

also contains a history of each barn, a map of locations, a list of activities at each site, and educational articles about barns.

This unique opportunity to tour local historic barns is sponsored jointly by and benefits both the DeKalb Area Agricultural Heritage Association (DAAHA) and the J.F. Glidden Homestead and Historical Center, DeKalb.

The self-driving tour includes a guided tour at each of eight barns, including the H&J Svendsen Farm, Goble Round Barn, Sanford Barn, Willard-Kern Farm, Callison Family Farm, Quinn Farm, C&A Svendsen Farm, and the Sanderson Farm.

Additional information is available by contacting Glidden Homestead at 815-756-7904 or info@gliddenhomestead.org.



Thanks to our Donors...

Our FOUNDATION is dedicated to providing agriculture based education for the next generation, and to meeting the challenge of providing food for a hungry planet.

The KCFB FOUNDATION offers its sincere appreciation to the following for their contributions. Names shown are contributions received from April 18 through June 16.

Donor	Beneficiary
Dennis & Beth Engel, Hampshire	Burlington-Hampshire Food Pantry
Through Harvest for ALL, KCFB members have contributed the equivalent of nearly 1.75 million meals to local food pantries.	
Thomas Richter, Wayne	KCFB FOUNDATION
Kevin Duck, Unity Advantage LLC, Batavia	FOUNDATION Scholarships
Scott & Michele Horton, St. Charles	KCFB FOUNDATION

Last chance!

KCFB FOUNDATION Winner's Choice Raffle

Please send me _____ tickets (\$15 each, 2 for \$25, or 5 for \$50)

Name _____

Address _____

City, State, Zip _____

Email _____ Phone (____) _____

Return with check made payable to Kane County Farm Bureau Foundation, 2N710 Randall Rd., St. Charles, IL 60174 **or** charge my

Visa MC # _____ / _____ / _____ Exp _____ / _____

Signature _____ Date ____ / ____ / ____

Drawing July 22 at the Kane County Fair 4-H Blue Ribbon Sale

Lucky's ENERGY SERVICE

We offer wet hosing, bulk tank fills and package lubricants – D.E.F, Oil, Hydraulic, Diesel and Gas for all your needs.

We are a 24/7 Fuel Supplier servicing Illinois – Wisconsin – Indiana
Call us today at 847-994-3010 or visit us online at www.luckysenergy.com
Growing To Serve You Better

Pesticide container recycling schedule

The Illinois Department of Agriculture is offering the Ag community an opportunity to be good environmental stewards through its annual agrichemical container recycling program. Farmers and agrichemical facilities are encouraged to start saving their empty agrichemical containers for select recycling

days that will take place later this summer throughout the state.

Collection sites will accept only high-density polyethylene, #2 plastic agrichemical containers that are clean and dry. Participants are responsible for rinsing them and removing all caps, labels, booklets and foil

seals. Metal and household pesticide containers are not eligible for the recycling program.

"In 2017, we held 31 single day collection sites and collected more than 86,000 pounds of plastic from approximately 115,000 containers," said Agriculture Director Raymond Poe. "What's great about this program is that

we can recycle those collected containers and make shipping pallets, fence posts, drainage tubing, plastic lumber and other useful products."

The program is a cooperative venture between the Illinois Department of Agriculture, Agriculture Container Recycling Council, GROWMARK, Inc., Illinois Fertilizer and Chemical Association, G.

Phillips and Sons, L.L.C., Illinois Farm Bureau, and University of Illinois Extension.

To obtain a free brochure about the program, call the Illinois Department of Agriculture toll free at 1-800-641-3934.

The collection sites and dates for the 2018 Pesticide Container Recycling Program are listed in the shaded box at left:

Date/Time	Location	Contact	County	City	Phone
8/2AM	Conserv FS	Scott Creek	McHenry	Marengo	815-568-7211
8/2 PM	Helena Chemical	Dan Moore	DeKalb	Kirkland	815-522-3251
8/4AM	CHS Inc.	Chris Ledbetter	Kane	Maple Park	630-365-5027

AM Site hours are 9am to 11am / PM Site hours are 1pm to 3pm

Raise scholarship funds at the John Buck Memorial Golf Outing

Buck Bros. Inc. & JW Turf of Hampshire will sponsor the 18th Annual John Buck Memorial Golf Outing later this summer. This fun-filled event will be held at a Northern Illinois Golf Course that uses quality John Deere turf equipment from JW Turf.

Proceeds from the event go to benefit the John Buck Scholarship fund, distributed to

the Kane County Farm Bureau FOUNDATION and others. The KCFB FOUNDATION's John Buck Memorial Scholarship is awarded annually to student(s) seeking higher education in agriculture related fields. For 2018, Claire Plapp of Malta and Jessica Yaeger of DeKalb were each awarded a \$1,500 John Buck Memorial Scholarship, joining 25 previous winners of

this prestigious award.

The date and chosen course for this fundraiser will be announced later in July and in the August *Kane County Farmer*. For details or early-bird registration, contact Sandy Seyller at info@buckbrosinc.com or 847-683-4440. Space is limited and the outing fills up quickly, so call early to make reservations.

Asphalt grindings—are they really free?

Most folks aren't aware that Clean Construction and Demolition Debris (CCDD) rules changed in 2012 and impacted the disposal of asphalt grindings by requiring additional testing and disposal fees. Over the past 5 years, the County has seen a significant increase in asphalt grindings finding their way onto farm and other properties within the County. In Kane County, a Stormwater Permit is required from the local jurisdiction for disturbances over 5,000 square feet or 250 cubic yards. Depending upon the amount of grindings, the property owner may need to construct potentially expensive stormwater improvements on their property to receive the grindings including capping the grindings, storm

sewers and stormwater detention that is required to be designed by a professional engineer. In addition to the violation fees, disposal fees, permit fees, design fees and construction fees, the "free" asphalt grindings can end up costing the property owner thousands of dollars!

BEFORE ACCEPTING ASPHALT GRINDINGS: Check with your local municipality or Kane County (unincorporated areas, Big Rock, Sleepy Hollow, Kaneville) before agreeing to accept any asphalt grindings to verify any local permitting or zoning requirements. Check with Illinois Environmental Protection Agency to ensure you are meeting all the requirements of (415 ILCS 5/3.160) Sec. 3.160 Construction

or Demolition Debris for your end use for the grindings. Consider developing a written agreement with the paving company signed by both parties to protect yourself from any materials that might be hazardous (remember disposal sites require testing for hazardous materials that the paving company is avoiding by placing the grindings on your property!) as well as holding the Company responsible for obtaining all local and County permitting to protect you from violations. The agreement should ensure that the Asphalt Company is held responsible for the permitted disposal of the grindings and any costs that you might incur as the property owner.

St. Charles Agency, Bob Effner, Agency Manager

ORAZIO DIFRUSCOLO has been named the Rep of the Month for MAY 2018 in the St. Charles/Elgin Agency, as announced by Agency Manager, Robert J. Effner, Sr., CLF®, LUTCF. Orazio has provided tangible plans for addressing the immediate and long term insurance needs of his clients through COUNTRY Financial's diverse products and services: Auto, Farm, Home, Life, Business, Retirement. Let Orazio's expertise help you! You may reach Orazio at 630-549-7696, orazio.difruscolo@countryfinancial.com or https://representatives.countryfinancial.com/

orazio.difruscolo/. Congratulations, Orazio!

Aurora Agency, Kevin Gomes, Agency Manager

Ryan Mizgate, Financial Representative with the Aurora Agency, is our Financial Representative of the Month for May 2018. Ryan began his career with COUNTRY Financial in June of 2014 and services clients out of his office located at: 1161 Oak Street, North Aurora, 60542. (630) 907-9485. Ryan's professionalism, community involvement and vast knowledge of auto, home, life, commercial and financial products make him a great person to do business with. Congratulations, Ryan!

Recruiter of the Month

Each month we honor the member who signs the most members into our organization. This month, the honor goes to Felipe Rocha! Felipe has been a COUNTRY Financial Representative since

August of 2011. His office is located at 541 N. Lake Street, Aurora. Thank you for your continued support of the Kane County Farm Bureau and congratulations on your success!



Felipe Rocha

CLASSIFIED ADS

CLASSIFIED AD RATES
 Classified advertising rates: 20 cents per word/\$20 minimum (60 words or less). **DISCOUNTS** for members: Associate members, 20%; Voting members, 30%; PLUS members, 40%. Advance payment requested. Ads due by the 15th of every month for the next issue. No advertising (classified or display) for financial or insurance services will be accepted. Call 630-584-8660.

SERVICES
 Jim Verhaeghe & Sons, Inc. - Tree removal, tree trimming, & stump grinding. Backhoe work & Tile Lines. Fully insured - Free Estimates - Jim Verhaeghe Sr. Call: 847 334 5730

WANTED
 Paying cash for old advertising signs, clocks, and wall thermometers. Gas and oil, farm equipment and seed, soda and beer, tobacco, food, and consumer goods. No reproductions please. Call Rick and leave your name and phone number - 815-286-9090

Want to buy vintage & used tools Call Chris - Also, we do cleanouts. Call: 630 550 7182

FOR SALE
 1964 FARMALL CUB TRACTOR WITH 4 x 7 Trailer + RAMP. Excellent running condition, new 6 AMP battery-starts up great! Some plow attachments, includes blade. Also has some manuals. \$1,500 cash. Geneva, IL. Call: 708-990-8086




Water Softeners
Iron & Sulphur Filters
Drinking Water Systems
Sales-Rentals-Service
All Makes




Kane County Farm Bureau members receive 10% discount on all service work.

FACTORY DIRECT PRICES

◆◆◆◆ **NO FIX - NO CHARGE** ◆◆◆◆




630-584-5559



www.johnsonwater.com





Recycle

Scrap for CASH

Steel, Copper, Aluminum & Cars

Trucking & Dumpster
Service Available

"Helping to keep America Picked up for 45 years"

Zimmerman Recycling, Inc.
301 Industrial Drive, DeKalb
(815) 756.8600

KCFB Foundation seeking handcrafted donations

Got a knack for woodworking, painting, welding, quilting, etc.? Consider showing off your artistic skills by donating a one of a kind creation to the Kane County Farm Bureau Foundation and Silent Auction at the Kane County Fair. All items donated are displayed in the KCFB barn through the Kane County Fair, which attracts hundreds of fair-goers daily. It is the perfect way to support the future of farms and food while showing off your artistic skills and gaining local notoriety.

All proceeds raised by this silent auction go towards KCFB

FOUNDATION'S effort to increase local scholarships available to and Ag-in-the-Classroom activities. For 2018-2019, the FOUNDATION awarded over \$27,000 in scholarships for college students pursuing careers in agriculture.

If you are interested in providing support for this year's silent auction, or you know of a business or individual that might have an interest in donating, please contact the KCFB office at (630) 584-8660 or feel free to stop by our office with your item(s).



Created by Jennifer Kresl, a Linguistics Analyst at AGCO Parts in Batavia, this one-of-a-kind, patriotically painted, metal yard-art tractor, and was auctioned off in support of the Kane County Farm Bureau FOUNDATION at the Kane County Fair in 2017. Handcrafted pieces like this make great donations and help support Agriculture Education. Interested in showing off your artistic skills? Stop by the Farm Bureau with your donation or call the office at (630) 584-8660 for more information.

Don't miss out on fresh peaches

The Kane County Farm Bureau is now taking orders for juicy, homegrown Peaches fresh from Rendleman Orchards, a southern Illinois grower.

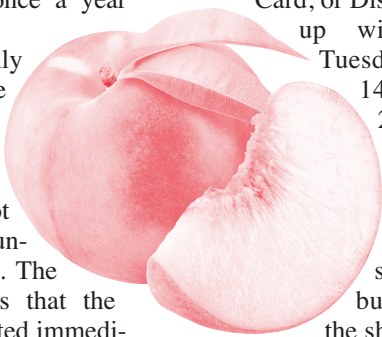
These delicious peaches are washed, hydro-cooled, graded to US #1 Extra, 2 1/2 inches and up in size, approximately 60 packaged in a 25 lb wax coated fancy box with a lid. They are delivered to our office on Randall Road the morning of pickup in a refrigerated truck for freshness and long lasting quality.

The grower recommends the peaches, which are available in the month of August, for their sweetness and juicy flavor. The peaches are freestones (easily comes off the pit). If you like to make peach pie or cobbler, or you like to can or freeze peaches, now is the time to take advantage of this once a year offer.

Peaches are highly perishable. They are shipped when they are a little green so that when they arrive they are not bruised with juice running out of the box. The grower recommends that the peaches be refrigerated immedi-

ately when you get them unless you are planning to can or freeze them within the next day. Then when you want to use them, you can take out however many you think you will use in the next day, let them sit out in a paper sack overnight, and they should be ripe and ready to eat or cook with. Peaches should not be out of the refrigerator for more than 24 hours. If they are left out too long, they are very susceptible to mold.

The price for a 25 lb box is \$30.00 (Plus member price), \$31.00 (member price) and \$32.00 (non-member price). PAYMENT IS DUE WITH ORDER. You can order by filling out the form and sending it in with your check, or call the Farm Bureau at 630-584-8660 and pay with a Visa, Master Card, or Discover. Pickup will be on Tuesday, August 14th from 2:00pm - 6:00pm at the Farm Bureau office, west side of the building (in the shed).



The sweet taste of summer - order today!

Fresh Peaches

Quantity: _____ \$30.00/box (Plus Member), \$31.00/box (Member), \$33/box (Non-member)

Amount Enclosed: _____

Name: _____

Telephone Number: (_____) _____

Member Number: _____

Credit Card # _____

Exp Date: _____ CVV: _____

Mail to: Kane County Farm Bureau, 2N710 Randall Rd., St. Charles, IL 60174 or call 630-584-8660
DEADLINE FOR ORDERING IS 5:00 p.m. Tuesday, August 7

Pickup is at the Farm Bureau August 14, 2018 from 2:00pm-6:00pm

Perk Alerts = Savings Alerts

Pass by a business in Kane County and there is a good chance you'll notice your phone alerting you of savings! These are called Perk Alerts and are just one of the many benefits of being a Farm Bureau member who has downloaded the IFB Benefits app from Abenity.

Another one of the "Perks" of having the app is also enjoying savings all over the U.S. - 302,000 places to be exact! Almost anywhere you go can elicit perks for money saving benefits on meals, vehicle repairs, goods, and services.

Don't have the app yet - why delay? Download today! Visit <https://ilfb.abenity.com> or if on your mobile, visit the App Store for iPhones and search Illinois Farm Bureau Member Benefits or Google Play, Abenity app, for Android. Install, open, and follow prompts to start saving and seeing your "Perks."

IFB Benefits Perk Alert
Beef Shack: Purchase a \$10 Gift Certificate for \$4 using limited time promotional code FRESH

IFB Benefits Perk Alert
LA Tan: 2 Spray Session for \$25! *Flawless*

IFB Benefits Perk Alert
Cooper's Corner: 15% off, up to \$15 value

IFB Benefits Perk Alert
Carl's Ice Cream: Buy one Vienna beef hotdog, get one FREE, Buy one softserve milkshake, get one FREE.

IFB Benefits Perk Alert
NAPA Auto Parts: 10% Discount off retail Prices

IFB Benefits Perk Alert
Lizzie's Garden: 10% Discount

IFB Benefits Perk Alert
Kane County Cougars: Buy One Get One Free Reserved Seat or Lawn Seat Ticket

IFB Benefits Perk Alert
Redbox: Rent 1 DVD, Get 1 DVD Free for the First Night

IFB Benefits Perk Alert
Bunge's Tire & Auto: Filter, Lube, & Oil Change \$25.95

IFB Benefits Perk Alert
Aliano's Ristorante: Purchase a \$10.00 gift certificate for \$4 using limited time promotional code BIG

IFB Benefits Perk Alert
The Lodge on 64: Purchase a \$25.00 gift certificate for \$10 using limited time promotional code FRESH

IFB Benefits Perk Alert
Cinemark Theatres: Save 21% on Cinemark's Platinum e-Supersaver eTicket with No Expiration Date. Order Online, Print, and Redeem.

IFB Benefits Perk Alert
Taylor Street Pizza/Elgin: 10% OFF Any Order Over \$10 OR 15% OFF Any Order Over \$15 *Excludes Catering*

Visit the Farm Bureau at the Kane County Fair

JULY 18-22

Farm Zoo

Thurs 3pm - 8pm
Fri - Sat 12pm - 8pm
Sunday 12pm - 4pm



Kids can see and learn about farm animals.

Farm Facts & Fun Scavenger Hunt

Thurs.-Sun. 12-3 pm & 5-7 pm
Search the fairgrounds for farm animal stamp locations & answer farm-related questions to complete the "Farm Facts & Fun Scavenger Hunt"! Brave adventurers 10 & under who complete the challenge can return to the Farm Bureau booth for a FREE ice cream cone! Pick up an entry form at the Farm Bureau display at the fair (Age categories: 5 and under, 6-8 and 9-10).



A 4-H representative is shown explaining the rules of the Risk Ranch game to each visitor at the booth. Participants can fill up their egg, which represents the hog and the feed and other costs needed to raise it.

Once filled and weighed, they drop a colored chip into the Plinko board, pictured at right. At the bottom of the board are different prices and the object of the game is to make money, which means landing on a number higher than what you spent. Sometimes you win, sometimes you lose, but it's a great learning experience for all!

Commodity Carnival

Thursday, July 19, from 4-7pm and Friday, July 20, from 12-1pm and 3-6pm the National 4-H Council and CME will be hosting an interactive game for kids of all ages. The object of the game is for kids fill a plastic egg with grain and marbles, representing feed, health and nutrition, transportation and energy, facility, and wage costs needed to raise their hog. They then drop a chip representing the weight of their hog into a giant "Plinko board" to see how market forces affect the outcome and their profit. Prizes include stress ball pigs. Don't miss out on the fun!

Proceeds from all Raffles benefit Kane County Farm Bureau FOUNDATION'S agricultural scholarships and Ag-in-the-Classroom programs.

Tractor Pillow Pets®

KCFB will offer FREE tractor shaped Pillow Pets® for new member sign-up, member reclassification, and member status "upgrades" at the Kane County Fair. Stop by our building to learn more and take one home! Options include large and small yellow Challengers, pink or red Massey-Ferguson's, and green Oliver tractors.

Ag-in-the-Classroom activities

From 2-4pm on Children's Day at the fair, Kane County Farm Bureau Ag in the Classroom Coordinator, Suzi Myers, will be presenting Agri-learning activities and experiences for kids. These activities are FREE, so be sure to plan your trip for this not-to-be-missed event; the kids will love it!

Raffles - feeling lucky AND love vintage trucks?

This year, for the first time ever in "Winner's Choice Raffle" history, the Kane County Farm Bureau FOUNDATION is raffling off a 1965 F100 Ford Pick-Up Truck at the conclusion of the 4-H Blue Ribbon Sale on July 22, at 3pm. Don't miss out on winning this 352 cubic inch, V8, 4 speed vintage truck! Tickets are 1/\$15, 2/\$25, or 5/\$50.



The Grand Prize winner can choose between this 1965 Ford Pick-Up Truck OR a John Deere X350 riding lawn mower OR \$3,500 cash. 2nd place prize is \$500 worth of groceries, 3rd place prize is \$500 in fuel, and 4th place prize is \$250 in Kane County Farm Bureau bucks.

If you want tickets and can't wait for the fair to start or won't be attending, feel free to stop by the Kane County Farm Bureau, Monday through Friday, 8:30am to 4:30pm, located at 2N710 Randall Road right in front of Costco at Oak Street. We also take credit cards over the phone - Visa, MasterCard, and Discover - and will mail your tickets - call 630-584-8660.

See YOU at the Fair!

