

Kane County Farmer



**KANE COUNTY
FARM BUREAU®**
Farm. Family. Food.™

Enhance the quality of life for member families;
Promote agriculture, farms & food; and,
Advocate good stewardship of our land and resources.

VOL. 88 NO. 6 JUNE 2023

KCFB Foundation names 22 scholarship winners

The Kane County Farm Bureau Foundation will award \$27,000 in college scholarships this year to 21 future Ag industry professionals. After reviewing the applications, the FOUNDATION board of directors has awarded 1 President's Scholarship, 8 General Ag Scholarships, and 2 General Scholarships. The Foundation also administers the John Buck Memorial Scholarships (2), Chuck Swanson Memorial Scholarship, Rodholm Charitable Trust Veterinary Scholarship, and 5 scholarships for AGCO – 2 AGCO Parts Division scholarships, 2 AGCO GWN Scholarships and 1 AGCO Platinum scholarship. In addition this year, one Adult Continuing Ed scholarship and 1 Driving Agriculture Scholarship were awarded.

"This year's response was great," said FOUNDATION Vice President Wayne

Schneider. "We are pleased and proud of the students who plan on going into agriculture related careers."

•••••



NORA THOMPSON

The \$1,750 KCFB Foundation President's Scholarship has been awarded to Nora Thompson of Maple Park. Nora's parents are Michael and Jennifer Thompson.

Nora graduates this year from Burlington Central High School and plans to attend Augustana College in Rock Island. She is a long-time 4-H member and an ambassador to Kane County 4-H.

She plans to pursue a degree in marketing and reduce negativity and spread positivity about agriculture to the public.



ALEXANDRA HECKLE

The \$1,250 Chuck Swanson Memorial Scholarship has been awarded to Alexandra Heckle of Batavia, daughter of Dan and Dorothy Heckle.

Alexandra graduated Rosary

High School and is attending the University of Missouri, studying Agricultural Education/Animal Science with a minor in Agribusiness.

She credits her early interest in gardening and houseplants with her interest in ag and hopes to blend Animal Science and Agribusiness to influence research or product development for livestock.



CHEYANNE JUDD

A \$1,250 KCFB Agriculture Scholarship has been awarded to Cheyanne Judd of Cortland.

Her parents are Bradley and Michelle Judd. Cheyanne graduated Sycamore High School and is attending Black Hawk East College, studying Agribusiness Management and Animal Science.



ELIZABETH KLECKNER

Elizabeth Kleckner of Sycamore has received a \$1,250 KCFB Agriculture Scholarship. Her parents are Dave and Teri Kleckner. Elizabeth graduates Sycamore High School this year and plans to attend the University of Minnesota, study-

ing Agricultural Law and Political Science.



ERIC METZ

Eric Metz of Plato Center has received a \$1,250 KCFB Agriculture Scholarship. Eric's parents are Timothy and Susan Metz. Eric will be a junior at Southern Illinois University this fall, majoring in Agribusiness (continued on page 3)

More 2023 Scholarship winner bios will be in next month's Kane County Farmer

NOTICE OF ANNUAL MEETING

Notice is hereby given that the 110th Annual Meeting of the Kane County Farm Bureau will be held at the Kane County Farm Bureau, 2N710 Randall Road, St. Charles, IL 60174 on Thursday, June 15, 2023, at 6:30 pm for the purpose of receiving and acting upon reports of officers, the board of directors, and management for the fiscal year ended December 31st, 2022, and to announce the five directors elected to serve terms of three years, and for transaction of any other business that may properly come before the meeting.

Chris Collins,
Secretary

KCFB CALENDAR JULY 2023

- 5-8 Summer Ag Institutes
- 8 Fay's Drive-Thru dinner (3-7) (KCFB Foundation fundraiser)
- IAITC Golf Outing, Pontiac, IL
- 11 Kane County Cougars game (call for tickets)
- 14 Kane-DuPage SWCD Pollinator Habitat Field Day, 9:00 am, 2315 Dean St., #100, St. Charles. Pre-registration required – see page 3
- 15 KCFB Annual Meeting, 6:30 pm
- 22 Fay's Drive-Thru BBQ dinner (3-7)

(All at KCFB, 2N710 Randall Rd., St. Charles unless otherwise noted)

June Featured Food Lemon-Rosemary Pork Roasts

The special this month is a box of 3 individually wrapped, 24 ounce boneless pork roasts cut from the most tender part of the pork loin. The roasts can be cooked just like beef in an internal temperature of 145°F, sliced thin and used as an entrée. Each roast is netted together and vacuum sealed to preserve the lemon-rosemary marinade. The special is offered for \$26.60 to Farm Bureau members; Plus Status members always receive a 5% discount on edible products at the Farm Bureau!

Drive thru BBQ's for KCFB Foundation

KCFB Foundation is teaming up with Fay's Finest Foods of Waterman to offer its members and the public a convenient and delicious way to raise money for our college scholarships and agricultural literacy program efforts. The tasty treats continue Thursdays, June 8 & June 22 on the parking lot at the Farm Bureau on Randall Road in St.

Foundation fundraisers scheduled for second Thursdays May-October

Charles.

From 3 p.m. to 7 p.m., drive-thru diners can choose from 3 meals at \$18 each (if paid in advance), a 2 pork chop meal; or 2 chicken quarters; or a 1 pork chop, 1 chicken quarter combo. All meals will come with baked beans, coleslaw, apple sauce, a roll and butter.

The Farm Bureau parking lot

will be set-up for fast and convenient drive-thru service, order for the entire family! Meals will also be available on a limited basis for drive-ups without a reservation at a slightly higher, \$19.00 price.

All sales will benefit the KCFB Foundation and meal reservation, and pre-payment is encouraged. To reserve your meals and pre-pay, return the form on page 6 or call KCFB at 630-584-8660



KCFB, KC Cougars & summer fun

Get your discounted Kane County Cougars tickets and enjoy an all-American ball game with friends and family this summer. A couple of options are available:

Sunday Feast Tickets – Eat for FREE with your \$15 ticket purchase and receive \$15 of concessions money. Tickets are available for June 11th, July 16th, and August 6th or 20th games. Twenty tickets are available for each date.

Taco Tuesday game tickets – We also have 100, \$10 tickets available for June 27th or August 1st that include half price margaritas and taco trucks. The August 1st date is "Bark in the Park" – bring your canine.

All games are at Northwestern Medicine Field in Geneva. Summer and baseball are calling ... get your tickets today for guaranteed fun with KC Cougars baseball! Call 630-584-8660 today to reserve your tickets or stop by our office.

Father's Day is almost here ...

On her special day,
Mom wanted flowers...
Dad, he wants a vintage truck.

And we have one.
1965 IH D900 step-side pickup truck
Raffle Drawing September 17. Tickets \$15 each, 2 for \$25 or 5 for \$50.
Call 630-584-8660. Order form on page 8.



Six candidates vie for KCFB Board

As reported last month, 2023 KCFB elections will be the first since the Board of Director's amended the organization's bylaws to allow for at-large elections. Previously Directors were elected according to geographic Districts comprised of 3 or 4 townships. The change was made to encourage more farmers and farmland owners to seek seats on the governing Board.

Up to 5 Directors will be elected for three-year terms from ballots mailed to regular voting (farmer and farmland owner) members in May. When mailed in late May to voting members (farmers and farmland owners) ballots contained the biographical information on each candidate seeking election which follows:



Craig Bradley

Background: I was raised on a small Iowa farm that had been in the family since 1914. After graduating from the University of Iowa, my next 50 years were devoted to credit unions. In 1977, I took the position of CEO/president of the then Kane County Teachers Credit Union until my retirement in 2013. I now partner with a neighboring farmer producing corn and soybeans implementing the use of cover crops. For 15 years I have participated in the Conservation Reserve Program. I am an apiculturist (beekeeper) with hives located in Elgin Township.

Why I am seeking a seat on the Farm Bureau Board of Directors: As a board member, educating the public and legislators to the fact that agriculture and a healthy economy go hand and hand at both the county and state level. I feel honored to have served on the KCFB Board of Directors for the past 10 years and look forward to future service.



Brett Dienst

Background: I grew up on my family's grain farm in Maple Park. I received my Bachelor's Degree in Agricultural Business from Illinois State University and participated in Collegiate Farm Bureau, Hoof and Horn Club and Young Leaders. Currently, I am a crop insurance officer at Compeer Financial. Since planting roots in Kane County, I graduated from IFB's ALOT program, joined and now serve the KCFB Young Leaders as Chairman. I hope to share my passion and positively inspire this ever-growing group and assist the farm bureau in their mission to enhance, promote, and advocate for agriculture. Spending quality time with my kids in my free time is something I value dearly and having the opportunity to show and teach them about agriculture firsthand is special to me.

Why I am seeking a seat on the Farm Bureau Board of Directors: I want to join the Board to be a voice not just for farmers but for young farmers and for our ag industry represen-

tatives that are a part of the Farm Bureau. What I believe I would bring to the Board is enthusiasm and fresh energy to whatever role is presented to me, so that I may help be a driving force of the Farm Bureau and to the Kane County farming and agriculture community as a whole.



Michelle Dumoulin

Background: My name is Michelle Dumoulin. I am 29 years old and the daughter of a second-generation farmer. I work part-time on my family's hog and grain operation in Hampshire, Illinois. I also assist with data inventory, production analysis and financial books for the farm. I attended the University of Illinois Urbana-Champaign where I majored in Accounting and then attended Northern Illinois University and graduated with my law degree. I now work for Agnew Law Office, an estate planning firm that specializes in creating estate plans for farmers and creating farm business entities. I am heavily involved at St. Charles Borromeo Catholic Church where I serve on the board for the Catholic Order of Foresters, volunteer as a Catechist and assist with Knights of Columbus events.

Why I am seeking a seat on the Farm Bureau Board of Directors: Farmers and farm families are responsible for providing an underrated yet necessary service of feeding our community and world. I believe my background in agriculture, coupled with my legal and tax knowledge, will allow me to provide a fresh look at fulfilling this responsibility in a cost-effective and tax efficient manner. I would also like to help educate consumers about agriculture and the role it plays in so many industries.



Donna Lehrer

Background: My name is Donna Lehrer and my farm raises sheep, produce and flowers for the past 23 years. Agri education is promoted thru our fiber studio, Esther's Place. Our farm was the first small scale farm to be selected for the Farmland Protection Program. I studied Botany (Duke University) and Environmental Planning (University of Pennsylvania). My corporate work experience (BP Oil Spill Manager) further developed my advocacy/regulatory policy development skills. I have served on the KCFB Board for 19 years, as an AgDays presenter, Ag Institute presenter, IFB Annual Meeting Delegate, and participated in ALOT and Leaders to Washington Programs, and the Government Affairs Conference. Direct Marketing Committee Chairman. I am a founding member of the Illinois Veteran Farmer Coalition and serve on advisory Task Forces for Early Onset Alzheimers / caregiver needs.

Why I am seeking a seat on

the Farm Bureau Board of Directors: I am seeking reelection to the Board because I value my role of representing the farmers issues impacting their operations to County FB Board and working to develop policies and legislation to advocate their needs. I especially remain fully committed to representing the small-scale farmer, livestock operations, handicapped and veteran farmers, and farmland protection programs.



Chris Collins

Background: My name is Chris Collins and I have been married to my wife Hope for 20 years. We have 2 children. I have an Associate's Degree in Business Management and Supervisory Administration. I have operated a small grain farm in central Kane County for 35 years. I also worked for the Illinois Department of Transportation for 32 years supervising a traffic operations unit covering 3 counties in northeastern Illinois. I have been involved with Farm Bureau for many years and have also served on many of the working committees. I currently serve as the organization's Secretary/Treasurer.

Why I am seeking a seat on the Farm Bureau Board of Directors: I am seeking to be re-elected to the Board of Directors to be involved in helping KCFB continue to be a positive voice for agriculture. Over the years KCFB has worked hard to gain and maintain the respect of local officials and state legislators, companies and special interest groups. It is important we continue to maintain those relationships to keep the agriculture community respected and relevant with the general public and within the ag sector. I would be honored to continue my service on the Board and to the agriculture community.



Karl Kettelkamp

Background: I am 57 years old, married to Julie with 2 children, Erin and Jackson. I have an Associate's degree in applied sciences. Our farming operation raises row crops and specializes in hay production. Most of the land we farm is in the Kane County Farmland Preservation program. I have also finished hogs and cattle and currently raise sheep.

I have served as a KCFB and KCFB Foundation Directors, AgDays and AITC presenter, IFB Annual Meeting delegate and I participate in the annual Touch-A-Tractor open house. I am a member and Trustee of Kaneville United Methodist Church, served 11 years at Kaneville Fire Department, and am a member of Kaneville Historical Society, Genuine Indian Relic Society, Central State Archaeological Society and the Kaneville Memorial Day Committee.

Why I am seeking a seat on

the Farm Bureau Board of Directors: From farmers needing a collective voice for farm inputs and marketing to today's agricultural issues, KCFB continues to strive for profitability,

sustainability as well as a safe and secure food supply for all. I desire to contribute to the important work continuing for the advocacy of farming now and in the future.

Welcome new members

You receive the *Kane County Farmer* because you are a Farm Bureau member. If you are a farm operator or owner, you benefit from a local, state and national organization committed to agriculture and your way of life.

If you do not have direct ties to farming, your membership helps promote local farms and farming, encourages wise use of our limited natural resources and preserves farmland and our agricultural heritage while allowing you to enjoy COUNTRY insurance and the many benefits of one of Illinois' premier membership organizations.

We appreciate your membership and continued support and we welcome your comments on the content of the *Farmer*. We encourage you to make recommendations about farm, home, food, natural resources, renewable energy or agricultural heritage and history-related topics for inclusion in future issues of the *Farmer*.

KANE COUNTY FARM BUREAU BOARD ATTENDANCE JANUARY 2023 THRU DECEMBER 2023

	JAN	FEB	MAR	APR	MAY	JUN	JULY	AUG	SEP	OCT	NOV	DEC
C. BRADLEY	X	X	X	X	X							
B. COLLINS	X	X		X	X							
C. COLLINS	X	X	X	X	X							
K. ENGEL			*	*	X							
J. ENGEL		X	*		*							
G. GAITSCH	X	*	X	X	X							
B. GEHRKE	X		X	X	X							
W. KECK	X	X		*	X							
M. KENYON	X	X	X	X	X							
K. KETTLEKAMP	X	X	X	X	X							
D. LEHRER	*	*	*	*	*							
A. LENKAITIS		X		*	*							
D. PITSTICK			X	X	X							
W. SCHNEIDER	X	X	X	X	X							
J. WHITE	X	X	X	X	X							

*Attendance by electronic means.

Kane County Farmer

KANE COUNTY FARM BUREAU PUBLISHED MONTHLY

Steven J. Arnold, Editor

Audre Pack, Bookkeeper

Elizabeth Polovin, Office Manager

Kelcee Miller, Development & Ag Literacy Program Coordinator

Alice Macha, Communications Coordinator

Jenna Rowe, Office Assistant

Mike Andresen, Building & Grounds

OFFICE: Randall Rd. between Routes 64 & 38

Address: 2N710 Randall Rd., St. Charles

PHONE: 630-584-8660

info@kanecfb.com www.kanecfb.com

OFFICE HOURS: 8:30-4:30 Monday through Friday

(USPS No. 289700)

POSTMASTER: Send address changes to Kane County Farmer

2N710 Randall Rd., St. Charles, IL 60174

Periodical Postage • Paid to St. Charles, IL 60174

Year Subscription: \$2.00

Joe White

President

47W727 Main St. Rd.
Elburn, IL 60119
630-878-1726

Wayne Schneider

Vice President

721 Lindsay Lane
West Dundee, IL 60118
847-428-0488

Chris Collins

Secretary/Treasurer

1143 Anderson
Elburn, IL 60119
630-934-4642

Craig Bradley

37W791 Orchard Lane
Elgin, IL 60124
847-888-2380

Bill Collins

1125 Lewis Rd.
Geneva, IL 60134
630-484-6852

Joe Engel

15N720 Walker Rd.
Hampshire, IL 60140
847-347-5561

Keith Engel

15N587 Walker Rd.
Hampshire, IL 60140
630-640-3665

Gerald Gaitsch

10613 Brittany Ave.
Huntley, IL 60142
847-669-2003

Beth Gehrke

12N860 US Hwy. 20
Elgin, IL 60124
847-697-2538

William Keck

P.O. Box 281
Sugar Grove, IL 60554
(630) 466-4030

Mike Kenyon

1250 E. Main St.
South Elgin, IL 60177
847-741-1818

Karl Kettelkamp

47W407 Main Street Rd.
Elburn, IL 60119
630-365-2713

Andrew Lenkaitis

6N707 Corron Rd.
St. Charles, IL 60175
630-513-9980

Donna Lehrer

7S027 Jericho Rd.
Big Rock, IL 60511
331-254-0334

Dale Pitstick

2N118 Pouley Rd.
Elburn, IL 60119
630-816-0223

TRELLIS
Pet Food • Propane
Salt • Delivery

Your local source for feed, supplies, and so much more!

St Charles and Wasco 630-584-2024

Getting ready for fall

Wait, what? It's only May! It's true, and yet, Kane County Soil and Water Conservation District (KDSWCD) has the perfect resource for your FALL plans ... Cost Share Dollars for Cover Crops.

Conservation Practices Program (CPP) funds are available through the Partners for Conservation Program to help landowners achieve the tolerable soil loss goals set by the state of Illinois. Build the quali-

ty of the soils on your field!

KDSWCD can guide you through the Cover Crop Decision Tool developed by the Midwest Cover Crops Council (MCCC). Cover crops are defined as "plants seeded into agricultural fields, either within or outside of the regular growing season, with the primary purpose of improving or maintaining ecosystem quality." The MCCC was organized in 2006, to facilitate widespread adoption of cover crops

throughout the Midwest, to improve ecological, economic, and social sustainability.

Cover Crops help build the soils on your field for next years crop yields and the generations to come. Consider the cover crop a long-term investment. KDSWCD provides funding to help overcome that initial payment obstacle of choosing cover crops. A good mix of cover crops can help reduce compaction, improve infiltration,

increase biology (macroinvertebrates, fungi, etc.) and/or reduce the number of inputs you need for the next crop.

Get more information by emailing contact@kanedupageswcd.org or calling 630-584-7960 ext 3. KDSWCD has been serving the Kane

DuPage County area since 1937, providing technical assistance and sharing in the cost of conservation practices to help farmers improve water quality, protect soil and restore dynamic ecosystems. Feel free to attend a monthly board meeting to learn more!

Kane-DuPage SWCD to host Pollinator Habitat Field Day on Wed., June 14th

Kane-DuPage County SWCD is hosting a Pollinator Habitat Field Day, open to the public and free of charge. Registration will open at 8:30 am for a 9:00 am start time at Kane-DuPage Soil and Water Conservation District, 2315 Dean Street, #100, St. Charles, IL 60174. Registration is limited and those interested in attending should register at <https://tinyurl.com/2ydtj272> or by calling (630) 584-7960.

Attendees will listen to presentations that highlight the on-site and ecosystem benefits of pollinator habitat as well as discuss management tips. Patrick McPartlan, Resource Conservationist of Kane-DuPage SWCD will talk about the Kane-DuPage SWCD Partners for Conservation Cost-Share program. Eleanor Schumacher, NRCS Liaison from Pollinator Partnership will discuss scientific findings about

the value of pollinators to agriculture and highlight sustainable conservation practices that incorporate pollinator habitat systems. "Pollinator habitat serves an important function in saving soil and preventing runoff. I've seen urban landscapes install pollinator habitat to solve problematic stormwater issues, and farms restore habitat and really reach their top function," says Schumacher.

At 10:45 am, guests will carpool to the Kane County Farm Bureau for a tour of the Farm Bureau Rain Garden and a talk from ENCAP Ecological Consultants about their work to design, install, and manage pollinator habitat to mitigate stormwater concerns, control erosion, and improve aesthetic and wildlife habitat value to local landscapes. Afterwards, guests will carpool to Logan & Susan Wilding's wildlife restoration and protection proj-

ect. The Wildings will discuss the transformation of their landscape into a thriving natural resource habitat for native vegetation and pollinator species, all made possible by the recent prescribed burn, selective invasive vegetation removal, and planting of a pollinator seed mix, supported by Kane-DuPage SWCD cost-share funding. "We're excited to demonstrate the process of turning abandoned land into a pollinator sanctuary," said the Wildings. "With cost-share from Kane-DuPage SWCD and management from ENCAP Ecological Consultants, we're engaged in a true labor of love for God's creation in nature." Attendees will have the opportunity to ask County officials and ENCAP about installation techniques, management and upkeep, and the rewards of keeping pollinator habitat at one's home or business.

Scholarships

(continued from page 1) and Economics.



WILLEM VANDERMEIJ

of Geneva is a recipient of a \$1,250 KCFB Agriculture Scholarship. His parents are Gerardus and Jill Vandermeij. Willem is attending Cedarville University, studying computer engineering.



LUCAS JOHNSON

Lucas Johnson of Sugar Grove is a recipient of a \$1,000 KCFB General Scholarship. His parents are Bradley and Lori. He graduates Kaneland High School this year and plans to attend Northern Illinois University to study Nursing.



LIBBY LARKIN

Libby Larkin of Pontiac, IL has received a \$1,000 AGCO AGWN Scholarship. Her parents are Dale and Jenny Larkin. Libby graduates Pontiac High School this year and plans to study Agribusiness Management and Agronomy at Hawkeye Community College.



BRIDGET WILKENING

Bridget Wilkening of Hinckley is the recipient of a \$1,000 AGCO Parts Scholarship. Her parents are Randy and Karen Wilkening. Bridget graduates Hinckley-Big Rock High School this year and plans to attend Joliet Junior College to pursue a degree in Agribusiness.



POLLINATOR HABITAT FIELD DAY

KANE-DUPAGE SOIL & WATER CONSERVATION DISTRICT

WEDNESDAY, JUNE 14TH, 2023

9 AM TO 1 PM

KANE-DUPAGE SOIL & WATER CONSERVATION DISTRICT
2315 DEAN ST. #100, ST. CHARLES

AGENDA

- 8:30 Registration
- 9:00 Importance of Pollinator Habitat - Eleanor Schumacher, Pollinator Partnership
- 9:45 Mitigating Resource Concerns with Pollinator Habitat - Patrick McPartlan, Kane-DuPage SWCD
- 10:30 Break & Travel to Farm Bureau
- 10:45 ENCAP - Kane County Farm Bureau Rain Garden
- 11:45 Logan & Susan Wilding Restoration Project

Learn More About Pollinators, their Benefits, and How to Help!

- Pollinator Benefits to Ecosystems
- Habitat to Save Water and Soil
- Pollinator Programs Support Wildlife
- Pollinator Habitat Management

FEATURING:

- * WILDING RESTORATION PROJECT
- * KANE CO FARM BUREAU RAIN GARDEN

REGISTRATION:
[HTTPS://TINYURL.COM/2YDTJ272](https://tinyurl.com/2ydtj272)
(630) 584-7960



June blooms brightly in the Illinois Prairie Pollinator Rain Garden

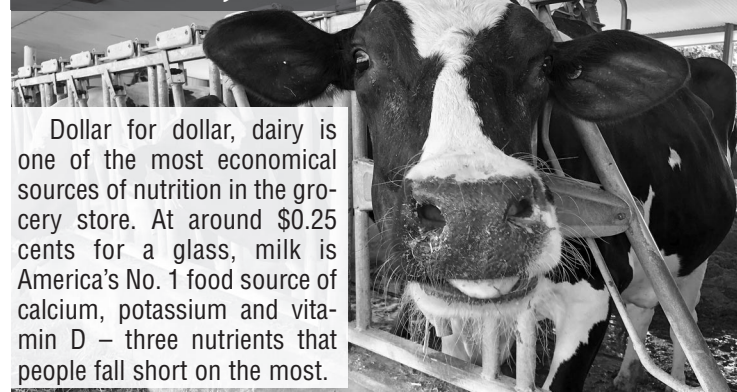
The Illinois Prairie Pollinator Rain Garden is bright with June blooms and buds. May's *Zizia aurea* (Golden alexanders) and *Geranium maculatum* (Wild geranium), are winding down but the bright purple blooms of *Tradescantia virginiana* (Spiderwort) are popping and *Monarda fistulosa* (Wild Bergamot) and *Asclepia incarnata* (Swamp milkweed) are budding. Stop by and wander the "waterways"!

Additionally, the Illinois Farm Bureau recently interviewed key players in the IPPRG installation and planting and that interview can be found here: <https://bit.ly/BloomScrubIL>.



Wild Geranium (left) and Spiderwort in the garden.

June is National Dairy Month



Dollar for dollar, dairy is one of the most economical sources of nutrition in the grocery store. At around \$0.25 cents for a glass, milk is America's No. 1 food source of calcium, potassium and vitamin D – three nutrients that people fall short on the most.



Kane-DuPage Soil & Water Conservation District



KANE COUNTY FARM BUREAU
Farm. Family. Food.

AG LITERACY CORNER

By Kelcee Miller, Development & Ag Literacy Program Coordinator



Hello Kane County!

How do you define happiness? What does happiness mean to you? No matter who you are, where you are in life, or your age, the answers will vary and they should. Your definitions or examples will be unique and special to you. I recently saw a quote by Bianca Sparacino about happiness and I think it has such a great message to share with you this month.

Her quote is as follows: "You're going to realize it one day - that happiness was never about your job, or your degree, or being in a relationship. Happiness was never about following in the footsteps of all those who came before you, it was never about being like the

others. One day, you're going to see it - that happiness was always about the discovery, the hope, the listening to your heart and following it where it chose to go. Happiness was always about being kinder to yourself, it was always about embracing the person you were becoming. One day, you will understand. That happiness was always about learning how to live with yourself, that happiness was never in the hands of other people. It was always about you. It was always about you."

I think sometimes we're all guilty of dreaming about the life we will have in 3, 5, or even 10 years, with this idea that our "happiness" lies in those future accomplishments. Or we may believe we will be happy after

we accomplish "this" or get "that." Unfortunately, this isn't how it works and it only leads to disappointments. I'm not saying there's anything wrong with wanting to set goals and to pursue more for yourself in life (I am a goal setter myself!). These motivations can be great if you use them wisely to provide value and make a positive impact in your life. However, if you think that chasing these future accomplishments will make you happy then you need to shift your perspective to make sure you are still appreciating the real gift of the present.

Focus on and appreciate what's going on in front of us. Learn how to make the most out of every day and truly enjoy the process of the journey you are on. Like Bianca said, it's about the self-discovery and embracing the person you are and are becoming along this journey of life. Happiness begins with you. Be kinder to yourself, listen to your heart, and embrace the current journey!

Happy June!

Last month, KCFB's Development and Ag Literacy Coordinator, Kelcee Miller and Education Program Coordinator, Ariel Beauchamp from Kendall Soil and Water Conservation District attended SPARK Career Extravaganza at the Fox Valley Family YMCA to promote careers in agriculture. The two, along with other professionals, spoke to over 500 students from 9 high schools across 3 different counties!



Helping you protect what matters most



Jeffrey Orman
Agency Manager
St. Charles
630-584-0001



Bob Effner
St. Charles
630-588-2002



Kelly Landorf
St. Charles
630-762-1328



Jeff Jones
St. Charles
630-492-5293



Norma Grathoff
St. Charles
630-492-5324



Laura Osters
St. Charles
630-762-1326



Chris Regula
St. Charles
630-485-5155



Donna Tonovitz
St. Charles
630-549-7694



Orazio Difruscolo
St. Charles
630-549-7696



Ashraf Gerges
Aurora
630-898-3750



Edward Stuehm
Geneva
630-845-8245



Michael O'Brien
Geneva
630-762-0852



Luke Fawkes
Flgin
847-742-0002



Victor Alvarado
Flgin
847-742-0003



Miryam Cabrera
Flgin
630-762-1329



Bob Riedel
West Dundee
847-428-5434



Gary Bolger
West Dundee
847-531-6110



Sherri Schramer
Flburn
630-365-9500



Dominick Davero
Flburn
630-365-3737



Charles Quick
Hampshire
847-683-2100



David Berreles
Hampshire
847-683-2100



Dan Cooper
Sugar Grove
630-466-9600



Ted Schuster
Sugar Grove
630-466-9600

*COUNTRY Financial® is the marketing name for the COUNTRY Financial family of affiliated companies (collectively, "COUNTRY"), which include COUNTRY Life Insurance Company®, COUNTRY Mutual Insurance Company®, and their respective subsidiaries, located in Bloomington, Illinois.



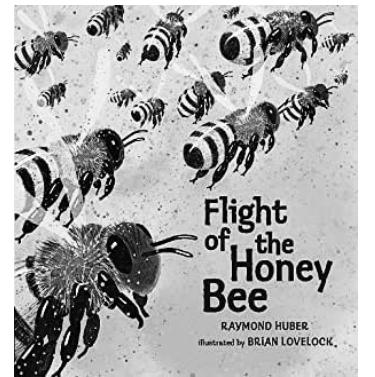
1220-509HC_07683-5/2/2023

Book of the month

What's the buzz about this month? I am glad you asked! This month we are celebrating National Pollinator Week, June 19th-25th and the book of the month helps readers see what's buzzing in and outside of the hives. The book of the month for June is *Flight of the Honey Bee* written by Raymond Huber and illustrated by Brian Lovelock.

Did you know that honey bees are one of the smallest creatures in the world who have one of the most important jobs for life on earth? Honey bees are a part of a family that works closely together and who are, "always changing jobs: first she is a cleaner, then a babysitter, a builder, a guard, a scout, and finally a harvester." Huber tells this story of a scout honey bee and illustrates her duties and adventures through Mother Nature's changing environments. Using sunlight, landmarks, and her built-in compass-like magnetic sense of smell, Scout takes readers on a hunt for pollen and nectar to share with thousands of other bees in her hive and how she navigates the journey to return

home to the hive safely. From cover to cover, *Flight of the Honey Bee* is full of fun and interesting facts, including tips and tricks to help save the bees, ways to attract other pollinators, and how to help create a safe environment for them to thrive! To see what the buzz is all about, I encourage you to stop in to the Kane County Farm Bureau office and visit our FREE Ag Literacy Library and check out *Flight of the Honey Bee*. The Kane County Farm Bureau Library was made possible by Bob Konen and Dean Dunn, and later supported by the Bob Konen Family.



Flight of the Honey Bee
by Raymond Huber,
illustrated by Brian Lovelock

Lesson in a Bucket

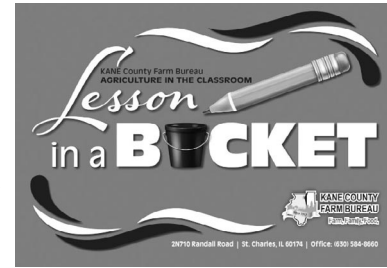
Are you or a loved one a teacher in Kane County? Have you been searching for new ways to inspire your students? Then you NEED Lesson-In-A-Bucket! KCFB has monthly themed ag-lessons in a 5-gallon chore bucket - yes, like the ones you would find on the farm! Each bucket is loaded with themed books, activities, and Ag - M a g s geared toward K-5 classrooms, concentrating on ag topics like apples, pumpkins, and soil.

June's Lesson-in-a-Bucket theme is all about Pollinators. Inspire students with a bucket of lessons about pollinators and their importance to agriculture including a classroom set of Pollinator Ag-Mags and Pollinator Ag-Ventures. Students will not only learn

about the importance of pollinators but they will also strengthen their sequencing skills while learning about the stages of a butterfly's life by using pasta noodles with this fun and hands on activity called, "Butterfly Life Cycle." Also included is a lesson called, "The Bees Knees and More!" that is designed to help students learn about the different parts of a honey bee

as well as deepen their understanding of each body part's functionality! See what the buzz is all about and bring agriculture and pollinator lessons into your classroom with Lesson-in-a-Bucket. Call Kelcee at 630-584-8660 to reserve your bucket today.

Next month, students will learn all about livestock and agriculture!



June is National Dairy Month! Celebrate this delicious and product diverse month by thanking a dairy farmer. Kane County is home to several dairy farms and nationwide, 99% of dairy farms are family owned. Dairy cows, on average, drink 30-50 gallons of water and eat 100 pounds of feed daily, which allows them to produce 70 pounds, or 8 gallons of milk per day. Dairy farmers work extremely hard to manage their herd so next time you treat yourself to a glass of milk, a slice of cheese, or an ice cream cone, be sure to thank a dairy farmer!



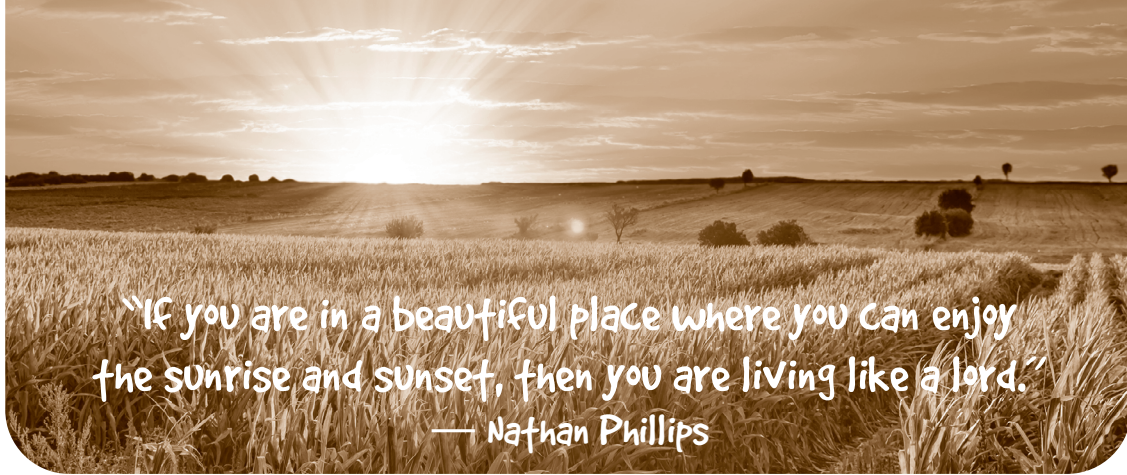
Like us on Facebook for a weekly chuckle - our Friday "Farming Funnies." You'll also find the latest info about our Little Lending Library and Illinois Prairie Pollinator Rain Garden, Fay's BBQ drive-thrus, upcoming events and specials, local farming folks and much more.



Farm Facts @ Fun

Compiled by Kelcee Miller, Ag Literacy Coordinator

Sunrise & Sunset



"If you are in a beautiful place where you can enjoy the sunrise and sunset, then you are living like a lord."

— Nathan Phillips

The word "solstice" comes from the Latin words sol "Sun" and stitium "standing." On the summer solstice, the sun's path ends its daily northward advancement and appears to stand still in the sky before going back the other way.

The solstice may be the "longest day," but it's not the latest sunset, or earliest sunrise! The earliest sunrises happen before the summer solstice and the latest sunset after the summer solstice.

On the solstice, the Sun rises farthest left on the horizon, and sets at its rightmost possible spot. Sunlight strikes places that get illuminated at no other time (think Stonehenge and Chicago-henge).

The kind of energy the Sun emits most strongly is infra-red. The Sun's strongest emission is felt by us as heat.

As for the Sun's visible emissions, the strongest is green light. That's why our eyes are maximally sensitive to that color and we live on a verdant planet.

"O, Sunlight! The most precious gold to be found on Earth." —Roman Payne

Frozen yogurt pops a cool summer treat

On a hot summer day while enjoying the sunshine, soak it in with this sweet and refreshing frozen treat!

Ingredients

- 1 cup yogurt, plain
- 1 medium banana
- 1 cup mixed berries, frozen
- 1/8 cup honey

Instructions

Toss all ingredients into a high-powered blender and puree. Divide evenly between paper

cups

Cover with aluminum foil and pierce foil in the center with a popsicle stick. The foil will hold sticks in place.

Freeze 4-5 hours or until solid.

Serve and enjoy!

Find this recipe and more tasty treats here:

<https://www.superhealthykids.com/frozen-yogurt-pops/>



Sunrises & sunsets

S	K	V	G	F	E	N	F	Y	W	A	A	Z	T	M	F	Y	D	M	S	Admire
L	O	X	L	A	R	O	O	R	Q	W	J	M	W	D	E	Y	O	U	Arrive	
Y	Y	T	P	B	E	R	R	Z	C	Y	O	K	R	A	Q	R	W	T	N	Beautiful
O	I	R	O	E	O	K	M	T	I	H	G	N	R	X	O	G	W	H	S	Cloudless
E	U	A	I	H	D	Z	C	S	Y	R	W	I	F	Z	V	E	O	E	E	Dawn
P	U	N	S	A	P	Q	S	U	T	K	O	P	I	T	A	E	H	R	T	Disappear
V	G	M	Y	E	N	E	R	G	Y	E	B	H	E	C	V	D	M	N	V	Dusk
S	S	E	L	D	U	O	L	C	S	H	A	B	L	B	A	U	Q	A	O	Energy
S	C	D	I	D	G	W	X	V	A	X	C	D	D	T	B	J	R	T	M	Farmstead
N	U	D	Y	E	S	S	C	Q	R	B	Q	J	S	E	Y	P	I	U	D	Fields
A	N	N	S	V	E	C	T	M	R	D	W	R	A	R	G	W	K	R	T	Freeing
X	D	W	R	R	U	S	L	W	I	U	F	U	O	A	Z	E	K	E	W	Heat
F	K	M	A	I	H	U	R	P	V	E	T	R	O	E	I	T	T	N	F	Horizon
G	K	J	I	D	S	I	L	S	E	I	A	V	K	P	V	V	W	B	M	Hues
W	E	M	S	R	Q	E	Q	T	F	N	Q	R	W	P	Z	O	S	Z	F	Indescribable
E	I	H	R	G	E	U	H	U	G	B	B	A	Q	A	T	Y	I	W	D	Mother Nature
U	S	U	M	M	E	R	L	E	K	I	U	O	R	S	Z	U	B	E	Q	Orange
L	U	F	E	C	A	E	P	S	S	X	L	M	F	I	H	G	X	G	C	Peaceful
C	J	S	C	U	E	F	U	L	B	U	P	W	K	D	P	T	K	Y	I	Photos
Y	R	I	T	T	M	D	I	N	D	E	S	C	R	I	B	A	B	L	E	Pink
																				Purple
																				Summer
																				Sunrise
																				Sunset
																				Workday

Name _____
 Address _____
 City _____ State _____ Zip _____
 Telephone (____) _____ Email _____ Age _____

Return to: Kane County Farm Bureau, 2N710 Randall Road, St. Charles, IL 60174 by June 15, 2023 to be entered in our drawing for a fun prize.

Prize must be picked up at the KCFB office within one month of newspaper publication.

DIY butterfly suncatcher

Did you know June is National Pollinators Month? Help celebrate the occasion with this fun and colorful craft!

Materials

- Clear contact paper
- Tissue paper
- Glue stick
- Card stock paper
- Hobby knife
- Scissors
- Butterfly template (found on site or create your own)

Instructions

Print the butterfly template from the site and cut along the outside of the black outline or create your own butterfly outline on a separate sheet.

Then use the hobby knife to cut out the white portion of the butterfly and leave the black outline. Flip it over and glue each layer of tissue paper with your desired colors covering the entire butterfly.

Then carefully glue on the other butterfly template so it aligns with the other side. Next, cover both sides with your clear contact paper.

Cut the trimmings off around your butterfly shape, hang in the window and admire the sunshine catching the beautiful colors!

Find this craft and more bee facts here: <https://simplemomproject.com/butterfly-suncatcher/>



JOKEs

What did the pig say when he was in the sun?
I'm bacon!

How does the sun greet the moon?
With heatwaves!

Why did the teacher wear sunglasses?
Because her class was so bright!

What does reading books under the sun make you?
Well red!

Congratulations

Jim Gross of Sycamore, this month's word search winner. His name was chosen from the entries received for correctly completing last month's Word Search puzzle. For his participation, he receives a fun prize. Thank you, Jim, for reading the *Kane County Farmer* and continue to watch each month for more great opportunities from the Kane County Farm Bureau.

<i>June is ...</i>		
<i>National</i>		
Olive Day	1	Go Fishing Day 18
Hazelnut Cake Day	1	Cherry Tart Day 18
World Milk Day	1	Pollinator Week 19-25
Donut Day	2	Vanilla Milkshake Day 20
Rotisserie Chicken Day	2	Cookie Dough Day 21
Egg Day	3	Peaches N' Cream Day 21
Cheese Day	4	Smoothie Day 21
Gardening Week	4-10	Chocolate Eclair Day 22
Gingerbread Day	5	Onion Ring Day 22
Chocolate Ice Cream Day	7	Strawberry Parfait Day 25
Strawberry Rhubarb Pie Day	9	Chocolate Pudding Day 26
Egg Roll Day	10	Ice Cream Cake 27
Herbs and Spices Day	10	Onion Day 27
Iced Tea Day	10	
Corn on the Cob Day	11	<i>National month of...</i>
German Chocolate Cake Day	11	Cucumber Month
Peanut Butter Cookie Day	12	National Dairy Month
Strawberry Shortcake Day	14	National Frozen Yogurt Month
Flag Day	14	National Country Cooking Month
Prune Day	15	Great Outdoors Month
Fresh Veggies Day	16	National Fresh Fruit and Vegetables Month
Fudge Day	16	Perennial Gardening Month
Apple Strudel Day	17	National Pollinators Month
Eat Your Vegetables Day	17	
Father's Day	18	



Sunrise, set prominent lure to country living

In her earliest drawings, our daughter frequently sketched the sunset and its brilliant hues, including the shades of pink and purple most don't consider. She would compare anything fiery orange to the daily phenomenon. And since acquiring a cell phone in her teenage years, she takes photos of both the sunrise and sunset, often several times a week. She sends Snaps on Snapchat, pairing her photo with

a country song for a poetic start or end to the day for her friends.

Our daughter keeps her eyes on the horizon, one of the wonders of farm and country life. Out

here, we can watch the sun arrive and disappear at a horizon of trees and corn fields without obstruction. Seeing the sun touch the earth ranks one of the most common reasons for living out here. At every cloudless sunrise and sunset, we feel unbound and free in peaceful solitude. For me, the daily moments create a direct connection with Mother Nature that amplifies the praise that we vocalize in unison at Sunday worship: God is good. But I would understand if any

eastbound drivers heading 20 miles to work around 6 a.m. may disagree.

The sun most often determines the length of the workday, outside of late harvest nights by tractor light. Hunters hunt from dawn to dusk. We start scouting fields at daybreak, expecting the sun's length of exposure and heat to advance the crops. Farmers look to the horizon to monitor summer storms approach or drift away with their anxiety dependent on the farm's needs.

In contrast, I enjoy visiting the Chicago suburbs, where my sister-in-law thoughtfully schedules experiences with new shops, parks and beautiful urban landscapes. I soak in doses of the city's culture, energy and especially the delicious food with accessibility. But I miss the

horizon and the indescribable liberty that brings. Returning home, I look most forward to reconnecting with it.

Ironically, a day this weekend started with a friend's meme of a country sunrise on Facebook. By evening, a friend texted me a sunset photo taken near the farm. Among my favorite summer sunrises is when I pull eastward into the driveway of the home farm by 6 a.m. The sun's rays cut through the trees of the pasture and

accentuate the fog that hangs low in the river bottom of corn below the farmstead.

In paraphrasing Franklin Roosevelt, we hold to hope and belief in a better life beyond the horizon. I agree as long as we never overlook the good life within it.

About the author: Joanie Stiers farms with her family, growing corn, soybeans and hay and raising beef cattle, backyard chickens and farm kids in West-Central Illinois.

National Library Week book donations

Development and Ag Literacy Coordinator, Kelcee Miller surprised local Kane County libraries with copies of Right This Very Minute by Lisl H. Dettleson to celebrate National Library Week, April 23-29, and to help promote Ag Literacy. In addition, St. Charles Public Library received a copy of Buzzing With Questions – The Inquisitive Mind of Charles Henry Turner by Janice Harrington.



Top row, left to right: Gail Borden Public Library, Elgin; Huntley Area Public Library.

Middle row: Geneva Public Library; St. Charles Public Library; Maple Park Public Library.

Bottom row: Town & Country Public Library, Elburn; Batavia Public Library.

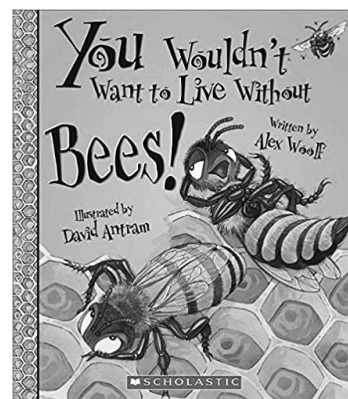
June is National Dairy Month!

Little Lending Library June spotlight

Every month our Little Lending Library has a special feature, book, or resource or all of the above! This is our way of helping connect with the community whether they are KCFB members or not. No matter who you are or where you are from, agriculture is everywhere and plays a crucial role in your daily life. It is our hope that through our (not so) Little Lending Library we can help bridge the gap between consumers and

farmers and help to make a positive impact in the name of agriculture.

The book spotlight for our young readers will be *You Wouldn't Want to Live Without Bees* by Alex Wolff. In addition we will have copies of our Pollinator AgMags for children and their parents to enjoy at their leisure as well! Supplies are limited, so buzz on over to KCFB and get them while you can!



IAITC grant opportunities

Illinois Ag in the Classroom is excited to be offering two classroom grant opportunities for Illinois teachers for 2023-24! Educators can apply for \$250 in ag-accurate books curated by our staff or \$300 for a new ag-themed project for your classroom. Applications due Friday, October 10, 2023. Apply for the Book Grant: <http://iaitc.co/bookgrants>

Apply for the Project Grant: <http://iaitc.co/projectgrants>.

Join IATC on Wednesday, August 9 at 10:00 for our hour-long "Get-a-Grant" Workshop to learn tips and tricks to maximize your chances of getting your grant approved.

Sign up for the Get-a-Grant Workshop: https://ilfborg.zoom.us/webinar/register/WN_btUJEAHQHi0DrgJJ0XOJQ#/ registration.

Illinois AGRICULTURE in the Classroom. BOOK AND PROJECT GRANTS. Classroom grants for Illinois teachers to stock your classroom library and fund your newest project! Application deadline: Friday, October 20, 2023. Teachers selected for funding will be notified on or before November 10, 2023. Find the applications online at <http://iaitc.co/bookgrants> and <http://iaitc.co/projectgrants>

Illinois AITC summer opportunities

Illinois Agriculture in the Classroom is looking forward to summer and excited for summer reading to kick off! IAITC has put together a lesson booklet that pairs well with this year's theme of "Find Your Voice!" The lesson booklet will be a great resource to help enhance your summer reading program and keep your reader learning beyond the books! For more information, contact Kelcee at 630-584-8660 or aitc@kane.cfb.com or visit: <https://iaitc.co/iread23>.



Bucket raffle donations needed!

It's officially summertime in Kane County! And that can only mean one thing... the fair will be in town before we know it! With that being said KCFB is starting to get things ready and prepped for the Kane County Fair which will take place July 12-16 at the Kane County Fairgrounds and we need your help to make this another successful year!

The Kane County Farm Bureau Foundation is asking local businesses to help promote their business and join our fundraising efforts in our annual Bucket Raffle and Silent Auction Fundraiser which supports our Foundation, providing

tuition assistance for local students pursuing a higher education as well as Ag literacy programming.

The Kane County Fair is one of the most widely attended events in the area! We hope you will consider promoting your business and we appreciate your consideration to join us in providing our community with opportunities to ensure a better future!

For more information &/or if you are interested, please contact Kelcee at 630-584-8660 or aitc@kanecfb.com.

Raging Waves tickets

This year's tickets have splashed down at KCFB. Enjoy a day at the largest water park in Illinois at a FB discounted price. A limited supply of single day, general admission tickets are available at \$24.00 each (regularly \$54.99) 2 under are free. Single day tickets are valid Memorial Day – September 4,

2023. Limit 5 tickets per FB member/family. Call us at 630-584-8660 for more info.



June is Dairy Month

There are approximately 340-350 udder squirts in a gallon of milk.

Kane County Farm Bureau FOUNDATION for the future of farms & food. June 8 or 22 Drive Thru BBQ Fundraiser. Please reserve for June 8 OR June 22. Pork chop dinners, Chicken quarter dinners, Pork chop/chicken combo dinners. Please enclose payment of \$18 per dinner. Make checks payable to Kane County Farm Bureau Foundation. Name, Address, City, State, Zip, Visa / MC, Exp. date, CRV, Phone. Return to: KCFB Foundation • 2N710 Randall Rd., St. Charles, IL 60174 or call 630-584-8660.

A COMPENDIUM OF A FEW COOL WORDS

By Alice Macha
Communications Coordinator



Words. I've liked 'em since I learned to read. String a few together and you've really got something ... communication! Words wander in and out of style and popularity and that's groovy with me, I'm down with it. WGN radio personality John Williams asked listeners recently to share their favorite words, and I found it fascinating and entertaining. Some words and expressions are supremely descriptive and some are just plain fun to say. Here are a few of my faves.

Puddin' head. I worked with a very smart guy who would sum up a dunderhead move by a co-worker or public figure by

shrugging and saying, "Puddin' head." Pretty well summed it up with the bonus of a fun mental image.

Petrichor. I learned this word a decade ago when I read it in a brochure describing food flavoring additives, and a product that "gave the ephemeral feeling of petrichor." Huh? *The Oxford Dictionary* describes it as a noun, and "a pleasant smell that frequently accompanies the first rain after a long period of warm, dry weather". I had not known that wonderful, indescribable smell had a name! Which leads me to ...

Ephemeral. This lovely word from the Greek "ephemeros",

KANE COUNTY FARMER

meaning "lasting a day" just rolls off the tongue and can be used to describe anything fleeting, including the brief lives of some insects and flowers.

Crepuscular. Sounds awful, doesn't it, like a disease (I'm sorry, but you have crepuscular stenosis). Ugh. In reality, it is an adjective that means "Of, resembling or related to twilight." It's a fun word to say that describes a wonderful time of the day. Meteorologists use it fairly frequently to describe long twilights and spectacular sunsets ("a crepuscular sky"). All good.

Hoi polloi. For years I thought this term meant wealthy or upper class. Sounds like it, somehow. It is actually from an ancient Greek phrase meaning

"the masses." It is used to speak disparagingly about commoners or working classes (The prince traveled by chauffeured limo to avoid the hoi polloi). Oh boy, I'm a member of hoi polloi.

Ersatz. This adjective has fallen out of favor, but I think it's the real deal. It was used fairly commonly a few generations ago to describe an inferior substitute or something not real or genuine, particular during world wars in which food products were rationed and less palatable alternatives were marketed. In German "ersatz" is a noun meaning "substitute." I still use it to describe all the fake emotion, crocodile tears and false humility in some public figures.

Scoundrel. This noun is just a great word – sounds like what it

describes, "a dishonest or unscrupulous person." I use it to describe people with ersatz personalities (see above).

Doppelganger. Another German word referring to a biologically unrelated look-alike. This is a fun word to say and describes the resemblance between unrelated actor/comedian Tim Allen and "Dirty Jobs" Mike Rowe or "The Crown" actress Emma Corrin and a young Jodie Foster.

So there you have it. A compendium of cool words that I've strung together in an ersatz column. Until next time, get some real enjoyment from these June crepuscular skies and the sweet taste and aroma of Fay's BBQ drive-thrus June 8 & 22 @ KCFB.

What's new at COUNTRY?

St. Charles Agency, Jeff Orman, Agency Manager

Congratulations to **Donna Tonovitz** who has been named the April Rep of the Month in the COUNTRY Financial® St. Charles/Elgin Agency, as announced by Agency Manager, Jeffrey Orman. Donna is a great asset to our team and is dedicated to providing tangible plans for addressing the immediate and long-term insurance needs of her clients through our Auto, Home, Farm, Life, Business, and Retirement products and services. Let Donna's expertise help you! You may reach Donna at 630-549-7694, or Donna.Tonovitz@CountryFinancial.com, or <https://representatives.CountryFinancial.com/Donna.Tonovitz/>. Congratulations, Donna!

Aurora Agency, Alonzo Nevarez, Agency Manager

AGENT OF THE MONTH MARCH & APRIL

Zach Fox, Financial Representative with the Aurora

Agency, is our Financial Representative of the Month for March 2022. Zach began his career with COUNTRY Financial in May of 2007 and services clients out of his office located at 1920 Wilson Street, Batavia, 60510, (630) 326-1996. Zach's professionalism and vast knowledge of auto, home, life, commercial and financial products make him a great person to do business with. Congratulations, Zach!

Jennifer Rivera, Insurance Agent with the Aurora Agency, is our Financial Representative of the Month for April 2023. Jennifer began her career with COUNTRY Financial in July of 2020 and services clients out of her office located at: 2946 Ogden Avenue, Aurora, 60504, (630) 449-0921.

Jennifer's professionalism and vast knowledge of auto, home, life and commercial products make her great person to do business with. Congratulations, Jennifer!

Plus membership winner

Congratulations this month go to Micheal Wurtz of St. Charles, the June winner of our PLUS (+) member monthly drawing for a FREE KCFB monthly special food product.

The next time Micheal stops in our office, he will receive a

FREE combo box of bratwurst and hot dogs from Inboden's Meats in DeKalb, one of the fine food products we offer each month.

In addition to the discounts and benefits of Plus membership, ALL KCFB PLUS (+)

members are entered in a monthly drawing for a featured food product or seasonal prize.

For more information on member benefits, membership upgrades or PLUS (+) member status, call Liz at 630-584-8660.

Welcome to the next level

This month we welcome the following KCFB members who joined our organization or reclassified their membership in January to *Regular or Professional Status:

We remind you of added perks that accompany your new Regular member or Professional Status and thank you for supporting KCFB's efforts at advocacy, education and hunger relief:

Regular Members	
Michelle Dumoulin	Hampshire
Matthew Hanson	Aurora

- Professional networking opportunities & engagement with farmers
- Agriculture, farm & food news delivered to your door
- New subscription to *FarmWeek*, the largest weekly agriculture newspaper
- Access to *FarmWeekNow.com*
- KCFB voting rights & ILFB delegate opportunities
- Continuing subscription to the *Kane County Farmer* newspaper
- Free annual registration at one of 7 statewide conferences

- 302,000 member discounts, including Ford, Lincoln, John Deere, Case IH, restaurants, hotels & travel
- Discounts at the KCFB Country Store on in-house sales of featured local foods

**KCFB Regular membership is required of all who join our association that have a vested interest in and receive income from the production of farm products as an owner or operator of a farm business. Professional Membership status is available for all those employed in agriculture-related occupations, even with no farm income. If you are interested in "next level" membership and the benefits it carries, please contact KCFB in St. Charles at (630) 584-8660.*

Thanks to our donors

The KCFB FOUNDATION offers its sincere appreciation to the following for their contributions to our hunger relief, community service, education, and scholarship programs. Names shown are contributions received March 15–April 16, 2023.



Donor	Beneficiary
Alice Macha	KCFB Foundation

We sincerely appreciate your willingness to help support agricultural education, scholarships, leadership training, and community youth education. We could not do it without your support!

Thank you to all the generous donors and volunteers who support Kane County Farm Bureau!

KCFB offers free signs to members

In an effort to increase production of specialty and sensitive crops, protect pollinators and increase communications between agricultural producers, Kane County Farm Bureau is making a limited number of signs available for free to Farm Bureau regular members (MM & PM member classifications). The signs are designed to notify neighboring farmers and pesticide applicators of the presence of beehives and specialty crops.

Kane County Farm Bureau strongly encourages growers of specialty crops, sensitive crops and beekeepers to first register their production sites on the Driftwatch specialty crop registry, <https://il.driftwatch.org>.

While supplies last, KCFB MM and PM members can obtain a limit of 2 free 18" x 24"



2-sided signs with "H" stakes to mark field locations. Additional signs are available at cost, \$11.00 each. Messages include "No Drift Zone", "Beehive" and "Specialty Crop" and all include

the url for fieldwatch, a part of the DriftWatch registry. Signs are also available at cost to Associate members and the general public while supplies last.

In addition, for farmers and landowners who have planted a portion of their acreage for pollinators, KCFB has free 24' x 36" "Pollinator Plot" signs available for the asking. For more information on these signs call us at 630-584-8660. To obtain signs, stop by the Farm Bureau office on Randall Road in St. Charles between the hours of 8:30 am and 4:30 pm, Monday thru Friday, or by appointment.

Recruiter of the Month

Each month we honor the person who signs the most members into our organization. This month, the honor goes to Victor Alvarado! Victor has been a COUNTRY Financial Representative since December 2017.



Victor Alvarado

His office is located at 1750 Grandstand Pl. Ste. 20, Elgin and may be reached at: 847-742-0004. Thank you for your continued support of the Kane County Farm Bureau and congratulations on your success!

CLASSIFIED ADS

CLASSIFIED AD RATES

Classified advertising rates: 20 cents per word/\$20 minimum (60 words or less). DISCOUNTS for members: Associate members, 20%; Voting members, 30%; PLUS members, 40%. Advance payment requested. Ads due by the 15th of every month for the next issue. No advertising (classified or display) for financial or insurance services will be accepted. Call 630-584-8660.

SERVICES

MASSAGE THERAPY: Treat yourself to 60 or 90 minutes of relaxation, pain relief, or both. Deep tissue, acupressure, or Swedish. Certified, experienced. Call Susanne Marshall, L.M.T 630-699-5610

WANTED

Want to buy vintage & used tools. Also, we do cleanouts. Call Chris:630-550-7182



Sign up for FarmWeekNow's Daily Update and get top Illinois ag headlines in your inbox each morning. Go to farmweeknow.com for more information.



97% of all U.S. dairy farms are family owned and operated. Milk has 9 essential nutrients for human health: calcium, potassium, phosphorus, protein, niacin, vitamin A, vitamin B 12, riboflavin and vitamin D.

Hampshire farm hosts student tours

On a beautiful sunny Friday morning in early May, Luck-E Holsteins hosted a group of 2nd-5th graders from Archangel's Academy and a preschool group from St. Paul's Guiding Light on their farm.

The day began with a presentation from KCFB's Ag Literacy Coordinator, Kelcee Miller about where their food comes from. She illustrated the importance of farming by utilizing a giant cheeseburger to grab the kids' attention and appetite!

Next the groups got a personalized tour of the Luck-E farm by viewing the calf barn, learning about their American Wagyu beef cattle and visiting some of their dairy cattle too! The students even had an opportunity to milk a cow with their own two hands!

Bottom right:

Reese Engel, 15 months, smiles and poses for a quick photo op with one of the Engel's 45 calves that get fed milk formula.



June is National Dairy Month

They say milk is local – but how do I know?

Have you ever wondered where your milk comes from? You're in luck! Visit whereismymilkfrom.com and follow the instructions to locate the code on your milk container (or on any other dairy product in your fridge). Most codes are a series of two numbers, followed by a dash, then followed by one to five more numbers (example: 12-34567). The numbers before the dash indicate the plant where your milk or dairy product was processed and packaged. The numbers after the dash indicate what dairy farm the milk came from.

Farm toy of the month

Gathering grain is never far from a Kane County farmer's thoughts, and this month's toy is a tower of grain gathering tools. This Tomy John Deere gift set features an end loader, grain wagon, combine and grain hauling truck. It is for ages 3 & up. The price is \$19.68, but in June, visit our Farm Bureau Country Store for 10% off this gift set.

See you soon!



Garden abundance starts with good soil

Kane County Farm Bureau offers soil testing to its members at a discount, a great service the Farm to make sure your soil is ready for spring planting. Three different tests available and results are sent by e-mail or mail directly to you. For a soil test form, visit www.kanecfb.com and click on benefits and services, or pick one up at the KCFB office. Deliver samples to Kane County Farm Bureau with payment. Prices listed are for Kane County Farm Bureau members, non-members, and PLUS status members. Ask us how to save even more when you upgrade your membership to a PLUS status. Call 630-584-8660 for more details.

Why test your soil? Soil in its natural state is rarely fertile enough for the best growth of plants. Usually it is necessary to replenish the earth's store of plant nutrients to obtain the most vigorous lawn, the most abundant and brilliant flowers, the prettiest trees and shrubs and the greatest yield of fresh veggies.

When is the best time to test soil? Proper sampling is important to obtain accurate results. Samples can be taken any time during the warmer months, when soil temperatures are at least 55 degrees. If the soil is too wet to spade, rototill or hoe, it is generally too wet to take a sample. On the other hand, extremely dry soil should not be sampled either.

How often should I test? Ideally, soil should be tested every 3-5 years, more frequently with intensive use. Try to sample during the same season each time for the best comparison.

Why does Farm Bureau provide this service? Kane County Farm Bureau was founded in 1912 as the Kane County Farm Improvement Association, to help farmers improve their production practices and increase the fertility and productivity of their soil. This program is an extension of that. It helps you take the guess work out of gardening!

Additional help for your lawn & garden is available through the University of Illinois Master Gardeners. Contact them at 630-584-6166 or visit their office at 535 S. Randall Rd., St. Charles.

Soil test costs

Basic PH Test
\$25 per sample for members, \$35 non-members
This test checks for soil pH, phosphorus, and potassium.

Lawn/Garden Test
\$35 per sample for members, \$45 non-members
This test includes the basic test plus organic matter and recommendations on amount and timing of fertilizer.



Pedal Tractor winner

Bill (Roger) Robinson of St. Charles, stopped in on a sunny Monday morning to pick up the pedal tractor on behalf of his great granddaughter, Kiera Heisey (age 2) of Manistee Michigan. The whole family stopped out during our annual Touch-A-Tractor event in April and will have a lasting memory for years to come when great grandpa Bill visits next!

KCFB Foundation/Fay's BBQ Drive-Thru Fundraisers

June 8 & 22 Aug 10 & 24 Oct 12
July 13 & 27 Sept 14 & 28 **YUM!**

At Kane County Farm Bureau, Randall Rd. at Oak St., St. Charles

Looking to get more involved in the Community? Join Young Farmers

You're invited to join the Kane County Farm Bureau Young Farmers. Join young (18-35 years), local agriculture enthusiasts from around Kane County as they socialize and learn more about upcoming local and statewide activities for 2019 at their next gathering. Any member 18-35 is invited and new faces are always welcome! For more information or to be added to the contact list please contact Kelcee Miller, aitec@kanecfb.com or Steve Arnold at (630) 584-8660 or steve@kanecfb.com.

Vintage Truck Raffle • KCFB Foundation

Please send me _____ tickets (\$15 each, 2 for \$25 or 5 for \$50)

Name _____

Address _____

City _____ State _____ Zip _____

Email _____ Phone (____) _____

Return with check made payable to Kane County Farm Bureau Foundation, 2N710 Randall Rd, St. Charles, IL 60174 **OR** charge my

Visa MC Discover: _____ Exp _____ / _____

Signature _____ Date _____

YOUNG FARMERS DAY AT THE KANE COUNTY COUGARS BALLGAME!

Sunday, June 18th, 2023
at 1:00pm

Call the office at 630-584-8660
for tickets, information
& questions
(like "Can I bring my father?")