

# Kane County Farmer



**KANE COUNTY  
FARM BUREAU®**  
Farm. Family. Food.™

Enhance the quality of life for member families;  
Promote agriculture, farms & food; and,  
Advocate good stewardship of our land and resources.

VOL. 81 NO. 6 JUNE 2016

## Dairy Breakfast to be held at Drendel Farm

Dale and Linda Drendel are opening their Hampshire farmstead to the general public for a Dairy Breakfast and Farm Tour on Saturday, June 18 from 6 to 11 a.m.

The Drendels offer this unique experience to visit a farm and provide others with a better understanding of the origins of their food, such as dairy products. "This Saturday morning family activity is meant to be enjoyed by all ages," said Dale Drendel. "We welcome visitors and hope they see this as an opportunity to learn more about how we care for our animals and produce fresh and wholesome milk."

When you visit their farm, known as Lindale Holstein Farm, one of the highlights will be watching some of the 150 dairy cows being milked in the milking parlor. The modern parlor accommodates 11 Holstein cows at a time and offers viewers an up-close look at the farm's automation and the transfer of milk from the cow to the bulk tank. Milking demonstrations will occur from 6 to 9 a.m.

The farm visit also offers a tour of the barns to see the young dairy calves, heifers and cows. If you have never milked a cow before you will have this once-in-a-lifetime opportunity to milk a cow by hand just like farmers used to do many years ago. And, you'll see all aspects of dairy production, from the feed used in their special diets to the care taken by farmers to

assure their animals are comfortable and healthy.

Besides the cows, visitors to the farm will see farm equipment used on the dairy and grain farm and get to sit on the seat of a modern tractor, plus participate in a scavenger farm hunt.

Then, to top off the morning, a hearty farm-style breakfast will be served complete with pancakes, sausage, applesauce, cheese, milk, coffee and ice cream, from 6 to 11 a.m.

A donation of \$8 for adults and \$5 for children (5-10 years) will be collected at the farm. The price includes breakfast and the farm visit. Children 4 and under are free. All proceeds go for dairy education in local schools.

The Dairy Breakfast and Farm Tour is being sponsored by dairy farmers from DeKalb and Kane counties.

As livestock caretakers for the past 40 years, Dale and Linda hold themselves accountable to the hundreds of dairy animals on their farm. "We take personal responsibility for feeding and caring for our animals," said Linda, "and providing top quality milk for consumers." They grow corn, soybeans, alfalfa, oats and wheat, much of which is used for dairy feed.

To learn more about the Drendels and the Dairy Breakfast visit their website at: [www.lindaleholsteins.com](http://www.lindaleholsteins.com). For additional information contact Bill Lenschow, Dairy Breakfast Chairman, 815-895-9690.

**Directions: The Drendel Farm address is 15N057 Walker Road, Hampshire, 60140.**

Dale and Linda Drendel of Hampshire are opening their farmstead to the general public for a dairy breakfast and farm tour on June 18 from 6-11am.

Never been on a farm before? Here's your chance.

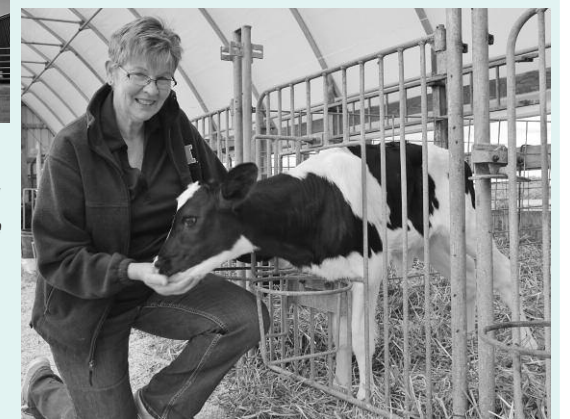


The Drendel Farm is located two miles southwest of Hampshire. From Hampshire, go two miles west on Rt. 72; turn left, going south, half mile on Walker Road. From Burlington, go three miles north of Burlington on Walker Road. Look for signs as you near the farmstead.

Linda Drendel poses with one of her calves.



Have you always wanted to tour a farm? Come see the Drendel dairy farm at the dairy breakfast!



### DATES TO REMEMBER

June

- June 6**  
YF BBQ, Biddle Farm; 6:00 pm
- June 7**  
KCFB Foundation Annual Meeting, 6:45pm  
KCFB Annual Meeting, 7:00 pm  
Board of Directors, 7:30 pm
- June 8**  
Women's Committee, 9:15 am
- June 9**  
IAA Foundation Ag-in-the-Classroom Golf Outing, Pontiac
- June 13-17**  
Summer Ag Institute 1
- June 18**  
Dairy Breakfast & Farm Tour, Drendel Farm, Hampshire, 6-11 am
- June 23**  
Women's Committee Luncheon, NIFB, 12:00 pm
- June 28-July 1**  
Summer Ag Institute 2

### NOTICE OF ANNUAL MEETING

Notice is hereby given that the 103rd Annual Meeting of the Kane County Farm Bureau will be held at the Kane County Farm Bureau, 2N710 Randall Road, St. Charles, IL 60174 on Tuesday, June 7, 2016 at 7:00 p.m. for the purpose of receiving and acting upon reports of officers, board of directors and management for the fiscal year ended December 31, 2015, and to announce the eight directors elected to serve terms of one, two or three years to represent Districts 1 through 5, as determined by a Resolution of the Board of Directors adopted January 7, 2016, and for transaction of any other business that may properly come before the meeting.

*Michael Kenyon, Secretary*

#### June Featured Product

### Marinated Chicken Breast

This month we have marinated chicken breast! Available flavors are: Honey BBQ, Italian, Garlic Romano, Pineapple-Apricot, Honey Mustard and, of course, good old-fashioned plain chicken breast to season as you please! Each box is 5 lbs. and individually vacuum sealed. These are great grilled and paired with your favorite side! Member price is \$25.00, PLUS members \$24.00, and non-members \$29.00. Available at the Kane County Farm Bureau, Randall and Oak Street in St. Charles. We have a limited supply, so stop in soon!

## KCFB welcomes new staff member

Kane County Farm Bureau is pleased to welcome a new staff member to our team. KCFB 2015 Summer Intern, Kristi Van Oost recently graduated from Truman State University with a Bachelor's degree in Agricultural Science, specializing in Agricultural Business, and with a minor in Equine studies. She is the youngest daughter of Robert and Anne Van Oost of Elgin. Kristi was a former varsity swimmer for the Truman State Swim team, as well as an

active member in Truman's Collegiate Farm Bureau and Sigma Alpha (professional agricultural sorority) chapters.

Growing up in the suburbs, Kristi enjoyed hearing her grandfather tell stories about his life growing up on a farm and enjoyed taking horse riding lessons. In high school she followed up on her farming interest by taking agriculture classes and participating in FFA activities.

Pursuing a degree in agricultural science was a no brainer for Kristi, and Truman State University offered her the unique opportunity to both swim and study agriculture. Kristi is an Agriculture "AGvocating" enthusiast, who enjoys working with horses, reading a good book, and enjoying the outdoors in her free time.

During her time at Truman,

she gained valuable knowledge about the agricultural industry through classroom and outside experiences. In March of 2015

Kristi had the opportunity to

accompany Missouri Farm Bureau on their legislative trip to Washington DC. It was there that she further developed her passion for agricultural communications, and that

sparked her interest in a career with Farm Bureau. After working as the KCFB summer intern in 2015, Kristi was eager to accept the full time position of Development and Program Coordinator. We are excited to have her on the staff, and know that her knowledge of the inner workings of the agriculture industry and unique set of skills and experiences will be a great addition to the Kane County Farm Bureau team.



Kristi Van Oost

## Items sought for county fair raffle & auction

The Kane County Farm Bureau Foundation holds an annual 'FUN'draiser at the county fair each year in the form of a bucket raffle. The Kane County Fair is one of the most widely attended events in the area, drawing over 100,000 people each year.

KCFB Foundation is now seeking donations of items from businesses and individuals all across Kane County that fairgoers can try to win in the bucket raffle. Bucket Raffles are a simple concept – Fairgoers purchase \$1.00 tickets and place them in

(continued on page 8)



# AG LITERACY CORNER

By Suzi Myers



It takes a village. I've heard that so many times, but at this point in my life, I'm reminded of it daily.

Why now, you ask? Last fall some of my good friends and I spent a wet and chilly day at Starved Rock. We hiked, ate yummy pot roast and did the trolley tour, it was great day.

We heard about their Mega Hike, a guided hike from one end of the park to another, 13 plus miles and visiting 18 canyons. (Maybe the number 13 should have made me superstitious). All of us love the outdoors, so we signed up for the spring hike.

I trained a bit by walking

longer distances and climbing stairs. We gathered together, drove to the park, got our neon orange shirts, met up with our group, took the tram to the start and our beautiful hike began.

The huge expanse of bluebells, Dutchman britches, jack in the pulpit and many other spring wild flowers were such a delight to see. The waterfalls, creek crossings that cooled us off, and the natural beauty of the park made it a special walk.

Then at about mile nine my "it takes a village" started when I unexpectedly found myself on the ground, thanks to a tree root that caught my foot. Unable to move

## KANE COUNTY FARMER

my right arm, the "villagers" got me to my feet, supported my arm with a belt sling and found an ice bag to help ease the pain on the long walk to the lodge.

Over the last few weeks, my special "villagers" have driven

me to doctors, tests, work, store and hospital. Brought me food, nursed me, consoled me, helped me with work commitments and much more.

I want to thank my "villagers" for their support: family, the

nature nerds, friends, church, co-workers, strangers at the park, and my doctors and nurses. My physical life changed in a split second, but to be blessed by such a wonderful "village" is a blessing ... "every cloud has a silver lining."

## Calling all teachers—register for KCFB's Summer Ag Institutes

Once again, Kane County Farm Bureau has two exciting and educational tours planned for area teachers in June. This is an excellent opportunity to earn college graduate credits from Aurora University, as well as gather lots of lessons to take back to the classroom. Learn through hands-on experience and meet farmers for firsthand knowledge of today's agricultural best practices.

**Summer Ag Institute 1 is scheduled for June 8-12.**

Our very popular summer class is a week-long look at the many different facets of agriculture in Kane County. This is your chance to tour local farms, have time to speak with individual farmers, tour agri-business-

es, see how agriculture affects your daily life, and network with other teachers. Discuss and become knowledgeable about

GMO's, sustainability, organic practices, and other hot topics.

**Summer Ag Institute 2 is scheduled for June 23-26, and focuses on our hungry planet.**

Our earth's population will be over 9 billion in 2050. How will we feed our planet? Join our 4 day event focusing on our Hungry Planet. This class is being offered to graduates of any year's SAI I class. This is your chance to visit farms and businesses involved in feeding our hungry planet. Possible sites include a lock and dam site, research lab, ag industries, and food bank.

Please contact Suzi Meyers at 630-584-8660 or airc@kanecfb.com for more information about the Summer Ag Institutes or to register.



During the Summer Ag Institutes, teachers can gather ideas and lessons to take back to the classroom, as well as earn college credit.

## Book of the month

"How many kinds of milk are there? What does "homogenized" mean? What are curds, anyway? Skim through *The Amazing Milk Book* for the answers and a whole lot more.

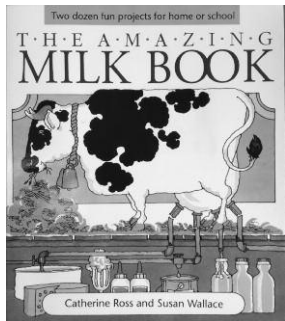
This book shows kids how to do a dozen delightful dairy experiments. You can make milk into invisible ink, glue, and ornaments, and recycle empty milk cartons into toy boats and bird feeders.

You'll learn how cows turn grass into milk, how dairy farmers prepare milk for the market, and why milk is so important to a strong body. You'll meet such big cheeses as Louis Pasteur and the cow blamed for the great Chicago fire.

There are also 11 recipes for marvelous milk munchies: yogurt, cottage cheese, butter, Baked Alaska, leche frita (fried

milk), and homemade ice cream. The *Amazing Milk Book* is utterly delightful!"

This is a fun book which describes the content of milk, where it comes from, its various uses, and how it gets from cow to carton. It is available for check out at our library— feel free to come in to browse in our library and to check out books of interest.



*The Amazing Milk Book* by Catherine Ross & Susan Wallace

## SPROUTS students learn about farming

During Kane County Farm Bureau's annual Spring Program of Reading & Outreach to Teachers and Students, or SPROUTS, six Farm Bureau volunteers and two KCFB staff members read the book, *Heartland* in area third grade classrooms. The book, written by Diane Siebert and illustrated by Wendell Minor of Aurora, gives students a look at life on a farm, from the perspective of the land. Some of the SPROUTS volunteers have farming experiences that help students relate to farm life in America's Heartland.

This year SPROUTS reached 1,650 students in 52 classrooms. Each teacher received a copy of the book "First Peas to the Table" by Susan Grigsby and a set of 30 urban-themed Ag Mags and follow-up activities to use in the classroom.

A memorial fund established in memory of long-time Farm Bureau volunteer and former KCFB Director Bob Konen, and

funded by family and friends, has been designated to fund SPROUTS. Special Thanks to

Alyce Konen, for continued financial support of this legacy to her husband Bob.

*Thanks to the following volunteers who made this year's SPROUTS program a success:*

Sandy Gould • Beth Gehrke • Barb Konen  
Jane Ryan • Jan Strauss

Kaneland Reading Specialists (coordinated by Lori Williams)

*Thanks to the third grade teachers at these schools for welcoming our SPROUTS volunteers to learn about farming and food.*

Rollins School, Aurora  
Greenman School, Aurora  
Holy Angels, Aurora  
Hermes School, Aurora  
Otter Creek, Elgin  
Liberty, Carpentersville  
Hillcrest School, Elgin  
Sunnydale, Streamwood  
Bell Graham, St. Charles  
Wayne Elementary, Wayne

John Stewart Elementary, Elburn  
Blackberry Creek Elementary, Elburn  
John Shields Elementary, Sugar Grove  
McDole Elementary, Montgomery

*A special thanks to Sandy Gould and Jan Strauss for pitching in when needed at Hermes school.*

## Thanks to our Donors!

The KCFB FOUNDATION offers its sincere appreciation to the following for their contributions in response to our April scholarship fundraising appeal. These donations will allow the Foundation to provide funding to more students wishing to pursue higher education for careers in agriculture. As part of our direct-mail fundraising pilot program, a second appeal for resources to improve classroom education about food and farming will follow in the fall. We hope you can continue to give generously.

Names shown are contributions received April 27 through May 15, 2016.

Chris Arnold  
Donald Benchley  
Diane Christian  
Ruth Clemens  
Donald Damisch  
Dunteman Grain Farms  
James Feuerborn  
John Gehringer  
Carl & Serina Hauser  
Charles & Mary Heidgen  
Vernon Herrmann

Robert Houtz  
Marcia Konen  
Arlene Koukol  
John Kozik  
Lester & Joyce Landmeier  
Andrew & Sarah Lenkaitis  
Anthony Longo  
Dorothea Marshall  
Lawrence Metz  
Kenneth Norris

James & Delores O'Connell  
Darrin & Linda Ott  
Gennaro & Stella Raimondi  
Mary Scheffres  
Ambrose Seyller  
Stanley Skirmont  
Darren Sloniger  
Marjorie Spellmeyer  
Beverly Tasche  
Shirley Wirsing

**DONALD J. FEE, DDS**  
FAMILY DENTAL CARE

26 W. CROSS ST. SUGAR GROVE DONALDFEEDDS.COM

630-466-4511



**MILK: Most Requested, Rarely Donated**

**\$60 helps provide a gallon of milk each week for a year to a hungry family**

Help Northern Illinois Food Bank's Milk2MyPlateProgram provide nutritious, fresh milk to hungry families.

Donate at [SolveHungerToday.org/Dairy](http://SolveHungerToday.org/Dairy)



**Beef store is now open!**  
By appointment only

*farmdirect***BLACKANGUS.com**

100% hormone free beef.  
Selling individual cuts. Buy as little or as much as you want.

**815.895.4691**  
Mark & Linda Schramer, Owners  
8N840 Lakin Road, Maple Park

**Sample Packs make great gifts!**

# KCFB Foundation scholarship recipients

The Kane County Farm Bureau Foundation will award over \$16,000 in scholarships this year to 16 high school and college students. The Kane County Farm Bureau established the Foundation in 1989 to carry out charitable work in the advancement of agricultural literacy and prepare students for careers in the agriculture industry. Since then it has awarded hundreds of thousands of dollars in college scholarships and internships.

Four scholarship recipients are not listed below and were profiled in our May issue. They are Brad Gorenz of Maple Park (President's Scholarship), Luke Dunteman of Elburn (John Buck Memorial Scholarship), Susie Thompson of Maple Park (Chuck Swanson Memorial Scholarship) and Cynthia Roberg of St. Charles (Mary L. Heckel-Blickle Memorial Scholarship).

The following students were selected to receive \$1,000 KCFB Foundation Scholarships. Congratulations to these future ag industry leaders.



A junior at the University of Illinois, **Brenton Bartelt** gained his appreciation for agriculture by helping his grandparents and uncle on their grain and dairy farm. Brenton is majoring in Technical Systems Management and minoring in Crop Sciences. He is active in Alpha Gamma Rho fraternity, Illini Dairy club, ag mechanization club, the Illini Navigators Bible study, and the UIUC club golf team. He has also participated on numerous mission trips and is the sound technician for his home church. Brenton hopes to work directly with farmers and others in the agricultural industry, and help improve their day to day life. Brenton's parents are Jonathan and Kristine Bartelt of Carpentersville.



**Erik Dunteman** grew up on a family grain farm, where he was actively involved in the operation. He is currently a sophomore at Iowa State University, majoring in Mechanical Engineering. He is an undergraduate research assistant, holds numerous positions within Farm-House Fraternity, is a member of ISUHyperlook Engineering Design Team, has been named to the Dean's List, and part of several other organizations. Erik's dream job is to be an international entrepreneur who engineers agricultural solutions centered around increased productivity with decreased impact on the world's depleting soil, air, and water resources. Erik's parents are William and Kari Dunteman of Big Rock.



Iowa State University junior **Lauren Dunteman's** agricultural experience includes caring for livestock on her family's farm and doing field work and bookkeeping. She is majoring in Biology, and will have an internship with Cargill in Eddyville, Iowa this summer. During her internship, she will use chemistry to convert corn into value added products such as corn starch and corn syrup. Lauren is currently part of a research team on campus where she is responsible for studying the movement of cancer cells through the bloodstream in order to better understand metastasis. In addition to this, Lauren is an undergraduate teaching assistant, supplemental instructor for a chemistry course, a member of Kappa Alpha Theta and the ISU honors program, and has been named to the Dean's List every semester. Her parents are William and Kari Dunteman of Big Rock.



**Grace Fabrizius** is a senior at Northern Illinois University majoring in Environmental Health. Her agricultural experience comes from

growing up on a horse and dairy farm, and being involved in FFA in high school. Grace would like to have a career that allows her to conduct research in finding solutions to the problems agricultural runoff causes to many sustainable resources. She previously studied at both Kishwaukee and Waubensee Community Colleges. Grace's parents are Gerard and Judy Fabrizius of Maple Park.



**Erin Gaitsch** will be a freshman this fall at Briar Cliff University, where she will major in Math, Accounting, or Finance. Erin's agricultural experiences come from assisting in numerous capacities on her family farm, where her favorite task was working at the farm stand. She chose her major based on her enjoyment of high school math classes and her first job working for a CPA. In the future, Erin hopes to improve the financial stability and effectiveness of her family farm by taking over the finance and bookkeeping. In addition, she would like to work in the finance or accounting department for an agricultural company. Erin is involved in numerous activities at Huntley High School, including math team, link crew, National Honor Society, and varsity soccer. She is the daughter of Gerald and Cynthia Gaitsch.



Not being able to imagine herself in any industry other than agriculture led **Catherine Gorenz** to select her major in Agricultural Communications. She is from Maple Park and will be a freshman this fall at Waubensee Community College. Catherine grew up helping take care of her family's livestock and also spent a lot of time with her horses. Being involved in agriculture has taught her that success requires hard work and passion. She has been active in FFA and 4-H, having served as the secretary and reporter for Kaneland High School's FFA, and president, vice-president, treasurer, and photographer for her 4-H club. Catherine is the daughter of Edward and Anne Gorenz.



**Vanessa Gould** will be a freshman at the University of Illinois this fall, majoring in Animal Sciences. She has been active in 4-H, FFA, varsity basketball, student council, and the national honor society. Vanessa chose her major because of her strong love for animals and appreciation for the atmosphere of the agricultural community. She hopes to pursue a career in animal ecology or zoology, and would like to learn more about protecting endangered species and their environments. Vanessa also would like to spend several years traveling and gaining experience to eventu-

ally become an educator in those areas. She is the daughter of Chris and Dana Gould.



Growing up on a family farm gave **Erin Kettelkamp** a passion and respect for the agriculture industry. She is a senior at the University of Illinois majoring in Animal Sciences. Erin intends to attend veterinary school and become a large animal vet. Her goal is to be a large animal vet with whom local farmers can establish a relationship, and hopes to help educate producers about how they can become better farm managers within biosecurity and efficient feeding solutions. Erin is active in Collegiate Farm Bureau, pre-vet club, 4-H House sorority, and the UIUC horse judging team. She is the daughter of Karl and Julie Kettelkamp of Elburn.



**William Kuipers'** experiences working for his family's business, Kuipers Family Farm, inspired him to attend Southwestern Michigan College this fall to study Fruit Production. He has gained a wide variety of experiences while working for his family's farm, including operating equipment, pruning fruit trees, and providing customer service.

After college, William intends to return to the family farm. William has been active in FFA, cross country, and track while in high school. He is the son of Wade and Kimberly Kuipers.



**Alicia Sunderlage** attends Southern Illinois University majoring in Agricultural Education. She was very active in FFA during high school, and is now a member of SIU Collegiate FFA. Alicia's agricultural experience includes working on a horse farm, where her responsibilities included baling hay and maintaining fences. She looks forward to using her degree and knowledge about farming to educate others about their food and the agriculture industry. Alicia is the daughter of Gordon and Jean Sunderlage of Hampshire.



**Allison Steininger** is a sophomore at Iowa State University majoring in Animal Science. Working with cattle was always Allison's favorite part of working on the farm, and she has her own herd of mostly Red Angus cattle. She plans to continue raising Red Angus cattle and hopes to eventually make it her primary source of

income. Until then, her goal is to work in the animal nutrition field. Allison was formerly involved in both FFA and 4-H, and is currently on the National Society of Collegiate Scholars. Her parents are Ken and Wanda Steininger.



**Hannah Weirich** of Hinckley is a freshman at Kansas State University, where she majors in Agricultural Education. Growing up, Hannah was exposed to agriculture by living on a non-production farm with poultry and a vegetable garden, and through Agriculture in the Classroom and 4-H. In high school, she was involved in FFA, and earned her state FFA degree. At Kansas State, she is an officer for the agricultural education club, a university education council representative, and a university CTE ambassador. She was also selected to attend the Agriculture Future of America conference. Hannah's career goal is to become an agricultural education teacher, through which she hopes help create the leaders and agriculturalists of tomorrow. Eventually, Hannah hopes to obtain a master's degree while she is professionally employed. Hannah's parents are Michael and Joanne Weirich.

## Helping you protect what matters most

 <b>Bob Effner</b> St. Charles - Elgin Agency Manager St. Charles 630-584-0001	 <b>Paima Chitambo</b> Geneva 630-262-1059	 <b>Dominick Davero</b> Elburn 630-365-3737
 <b>Bobbi Boston</b> St. Charles 630-485-5155	 <b>Steve Spoerl, Jr.</b> Geneva 630-262-1059	 <b>Bob Riedel</b> West Dundee 847-428-5434
 <b>Keith Eakins</b> St. Charles 630-762-1324	 <b>Elvia Estrada</b> Geneva 630-262-1059	 <b>Gary Bolger</b> West Dundee 847-531-6110
 <b>Todd Wilcox</b> St. Charles 630-762-1326	 <b>Joseph Lynam</b> Geneva 630-262-1059	 <b>Dan Cooper</b> Sugar Grove 630-466-9600
 <b>Donna Tonovitz</b> St. Charles 630-549-7694	 <b>Michael O'Brien</b> Geneva 630-762-0852	 <b>Sonny Ellen</b> Sugar Grove 630-466-9600
 <b>Orazio Difruscolo</b> St. Charles 630-549-7696	 <b>Bob Kearns</b> S. Elgin 847-888-3200	 <b>Ted Schuster</b> Sugar Grove 630-466-9600
 <b>Ashraf Gerges</b> Aurora 630-898-3750	 <b>Luke Fawkes</b> Elgin 847-742-0001	 <b>Josh Austin</b> Hampshire 847-683-2100
 <b>Edward Stuehm</b> Geneva 630-845-8245	 <b>Jonathan Gonzalez</b> Elgin 847-742-0001	 <b>Chuck Quick</b> Hampshire 847-683-2100
 <b>Rowena Ortac</b> Geneva 630-262-1059	 <b>Sherry Lochen</b> Elgin 847-742-0001	 <b>David Murray</b> Montgomery 630-897-2364
 <b>Sherri Schramer</b> Elburn 630-365-9500		

0316-556HO



# Farm Facts @ Fun

Compiled by Suzi Myers



Delicious, nutritious, cookie-dunkin'

## DAIRY

June Dairy Month began in 1937 to celebrate the dairy industry

### The journey of milk

1. It all begins on the farm from healthy and well fed cows, the sun, and grain.
2. Dairy farmers work with veterinarians to ensure the cows are properly cared for.
3. Dairy facilities are inspected and regulated for sanitation and contamination prevention.
4. The cows are milked and the milk is cooled to at least 45°F.
5. The tank truck driver tests the milk at each farm before pumping the milk from the cooling tank to the truck.
6. The milk is transported from the farm to the dairy plant. Transportation equipment and practices are regularly inspected to ensure the safety and quality of milk shipped from the farms.
7. Every truck of milk is tested for antibiotic residues, and may be randomly sampled for bacteria and somatic cell levels.
8. Government officials regularly inspect dairy processing plants to ensure compliance with strict sanitation requirements.
9. Raw milk is pasteurized to kill potential pathogens, and then homogenized to prevent cream from rising to the top of the milk.
10. Machines fill and label all different sizes and shapes of milk jugs and cartons.
11. Packaging operations are inspected to ensure product safety and quality, and are subject to random testing.
12. The finished milk products are then picked up by refrigerated trucks and delivered.
13. Transportation equipment used to ship finished products is inspected for product safety and quality.
14. Dairy case temperatures are monitored to ensure product quality. Products are also subject to random testing.
15. These steps show that a combination of dedicated farmers, processing facilities, and government regulations ensure safe, wholesome, and high quality dairy products!

### Did you know?

Whether it is labeled "antibiotic-free" or not, all milk sold at grocery stores is antibiotic free!

Antibiotics are used on many farms to treat infections. If a cow is producing milk when she is treated with antibiotics, her milk is collected separately and discarded. The tank truck driver tests the milk at each farm before pumping the milk from the cooling tank to the truck. Each truck of milk in the US is also tested for antibiotic residues. If any milk does not pass the tests, it is discarded, and regulatory action is taken against the farm with the positive antibiotic test.

Dairy farmers are not paid for their milk if it is discarded, so they are very careful to ensure that the milk from cows treated with antibiotics does not mix with the rest of the milk. Dairies work hard to ensure quality control measures are in place (i.e. separate pens, testing the milk of a cow that was treated and ensuring the antibiotic test is negative before allowing the milk back into the system) to guarantee antibiotic-free milk.

Bottom line – you never have to worry that milk not labeled antibiotic-free has antibiotics in it!

Cows eat 90 pounds of food and drink 25-50 gallons of water each day.

### June is:

#### National

- Dairy Month
- Fresh Fruit and Vegetable Month
- Iced Tea Month
- Recycling Month
- Great Outdoors Month
- Family Month

- Doughnut Day June 3
- Cheese Day June 4
- Strawberry-Rhubarb Pie Day June 9
- Iced Tea Day June 10
- Strawberry Shortcake Day June 14
- Eat All Your Veggies Day June 17
- International Picnic Day June 18
- Onion Rings Day June 22
- Chocolate Pudding Day June 26

### Milk 2 My Plate program

Since dairy product donations to the food banks were infrequent and milk so important to the health of patrons, in October of 2012, the Northern Illinois Food Bank in partnership with Prairie Farms/Muller-Pinehurst Dairy launched the Milk 2 My Plate Program. With funding from the National Dairy Council to provide refrigeration to three pantries, and a grant from Forward DuPage, the program began.

Cost is a barrier that often keeps low-income households and food pantries from purchasing fresh milk, and donations have traditionally been hard to come by because milk is heavily

regulated and has a short shelf life. To overcome these challenges, Northern Illinois Food Bank forged a partnership with a local dairy cooperative to provide participating pantries with a weekly supply of fresh milk. Established in 2012, the program now distributes 10,000 gallons of milk monthly, allowing neighbors in need to take home milk that is as fresh, or fresher, than what would be found in the store.

Kane County Farm Bureau supports this program through donations made to the Harvest for All Program. You too can contribute by joining in the program to help feed families in need.

When is the best time to milk a cow? **WHEN SHE IS IN THE MOO-D**  
 How many glasses of cold milk can you drink on an empty stomach? **ONLY ONE** (after that your stomach is not empty)  
 What cuts lawns and gives 100 glasses of milk a day? **A LAWN MOO-ER**  
 What do you get when you cross a cow with an earthquake? **A MILK SHAKE**

### Dairy

H V U E H Q H G N N I M A T I V M N S E  
 N A A M C E B I X C L Y R A T U G Q Z E  
 Q O Y X I U E P Q X V C E M N S K I N Z  
 D G L F Y T D M I L K Z D K H P N I G I  
 B I E L S P R O T E I N D O G E V Q C R  
 G R M L A K W V H Q G P U L G A C T K U  
 B N O P W G S P W O C L I O L S R Q K E  
 T H T W M I V K T Y P E M F J W E Z K T  
 H L H X X S M N S T K O O B F I A U U S  
 M O Z Z A R E L L A H B T B V S M E E A  
 M X S Y R I A D E S I H L Z H S V F X P  
 F J E U M E Q Z O R X S D W O C F Q V W  
 J E P W R P C B G U E R N S E Y U V J P  
 L R K O O O Z P N C I Y S J J S U X R K  
 J I M H T A H N W O R B X B J O J W S M  
 T H H B Y K O P T M C R Z M U I C L A C  
 N S C H E E S E S H S K S J P K W Q Y I  
 V R B C Z U N R P O Y E S R E J Y H D Y  
 X Y T S K D J L X W H S S K X F S F E O  
 O A G U X F N K W A D P R D H E Y C F G

- AYRSHIRE
- BROWN
- CALCIUM
- CHEESE
- COW
- CREAM
- CUD
- DAIRY
- GALLON
- GUERNSEY
- HAY
- HEIFER
- HOLSTEIN
- HOMOGENIZE
- JERSEY
- MILK
- MOZZARELLA
- PASTEURIZE
- PHOSPHORUS
- PROTEIN
- RIBOFLAVIN
- SWISS
- UDDER
- VITAMIN

Name \_\_\_\_\_  
 Address \_\_\_\_\_  
 City/State/Zip \_\_\_\_\_  
 Telephone \_\_\_\_\_ Email \_\_\_\_\_ Age \_\_\_\_\_

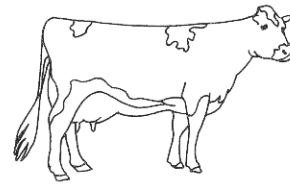
Please complete and return to the Farm Bureau, 2N710 Randall Road, St. Charles, IL 60174 by June 15, 2016 to be entered in our drawing for a prize of dairy-related items.

### Congratulations

**Jacob Long**, chosen from the entries received for correctly completing last month's "salad themed" word search. For his participation, he received a Veggetti spiral vegetable cutter and a rooster-shaped bamboo serving board, complements of Kane County Farm Bureau. Thank you, Jacob, for reading the *Kane County Farmer* and continue to watch each month for a chance to win a prize!

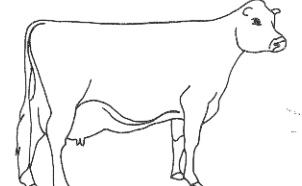
### DAIRY COWS

Milk comes from different breeds of dairy cows. Each breed is a different color. Trace the letters that spell each breed's name, and color the cows.



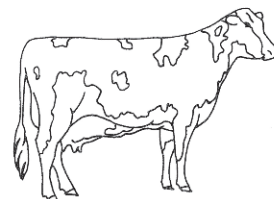
Guernsey

(gurn-zee)  
brown with white patches



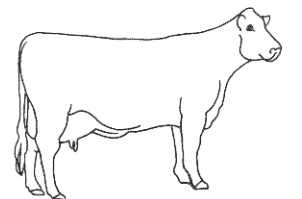
Jersey

(jer-zee)  
light brown



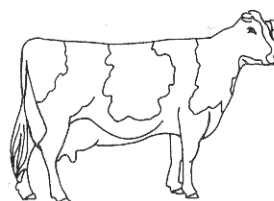
Ayrshire

(air-shur)  
white with red-brown patches



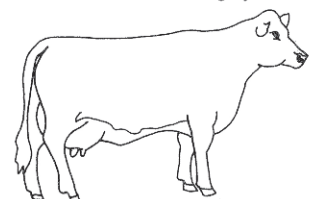
Brown Swiss

brown or silver-grey



Holstein

(say hole-steen)  
black-and-white



Milking Shorthorn

red, white,  
or  
red-and-white



This may be reproduced for educational purposes only. ©1994

# Tractors offered by Kane County Farm Bureau Foundation

To make room for the 2017 Winner's Choice Tractor Raffle, the KCFB Foundation is offering one of these two tractors for sale. The best offer received – on one or the other of the tractors – by the conclusion of the Kane County Fair on July 24, will be accepted. The Foundation is also seeking a nicely restored antique tractor to purchase as a Grand Prize option in the 2017 Raffle. To place a bid for either of these tractors, or offer a tractor for sale, contact Steve Arnold at 630 584-8660 or [steve@kanecfb.com](mailto:steve@kanecfb.com).

**1953 Farmall Super C**, Serial Number 168154 with 2 point hitch, drawbar, fenders,



**Farmall Super C**

lights & PTO shield. New gauges, steering wheel, hood, hydraulic lines and seat as well as wiring, decals, emblems, knobs and muffler. All wheels replaced and sandblasted prior to painting. New wheel

bearings and shaft seals & bearings. New seals in steering, PTO and wheels. All sheet metal, castings and pedals sandblasted prior to paint. Grille repaired, valves



**Farmall Super Ai**

ground and head and water pump checked, radiator cleaned, replaced rings, bearings and resurfaced guideliners. New tires and tubes all around.

**1947 Farmall Super Ai**

(Industrial) This tractor was purchased as an older restoration. Has new rear tires, new seat and new steering wheel. Comes with a 5' Woods belly mower.

**LOCAL FARMS = HIGH QUALITY FOOD**

By Val Johnson



I recently took a trip to Chicago and went to a fine dining eating establishment. Our waiter greeted us, went through the specials, his main selling point was that all of the food they served was either grown or raised on local farms. The restaurant was busy and it seemed that the people who were there really wanted to know where their food comes from.

Learning where the food you eat comes from was one of the reasons that moms decided to attend the City Mom tours. Moms, including myself, make food purchasing decisions for their growing families on a regular basis.

Food tastes different depending on how it is raised or grown. The best pork chop I've ever

eaten came from a locally raised 4-H pig. The taste was so different from the pork chops I was used to. I later discovered that the 4-H member who cared for the animal took it for regular walks to prepare it for showing.

There is a great need for larger farms which produce food at lower costs using less space and energy too. Farmers can still take good care of their animals in this setting. I experienced this first hand on my tours as well.

It doesn't matter whether it is dairy, produce, honey, or meat, having the opportunity to know your farmer is best. Ask him or her questions and bring up your concerns. Happy animals produce better food, and local farms produce the freshest produce. I hope to see you at the Farmers Markets this summer!

## Ladies, you are invited!

Want to learn something new? Are you willing to try some delicious food and meet a few new friends along the way?

The Kane County Farm Bureau Women's Committee invites all the female KCFB members to a luncheon on Thursday, June 23 at the Northern Illinois Food Bank. The event will feature retired educator and local beekeeper, Harry Patterson.

Learn about pollinators and the important role they play in

our environment. A delicious lunch will be served and catered by Reuland's Food Service. The menu will include select food items which needed to be pollinated in order to grow.

There is a small cost of \$10/person but will be worth every penny. Registration will begin at 11:30 am and lunch will be served at 12pm. Please RSVP by June 7 to the Farm Bureau (630) 584-8660. Reservations are required.

### Did you know ? ...

- Most pollinators (about 200,000 species) are insects such as flies, beetles, wasps, ants, butterflies, moths, and bees.
- About 1,000 of all pollinators are vertebrates such as birds, bats, and small mammals
- June 20-26, 2016 is National Pollinator Week
- You can learn more facts about the importance of pollinators at the Women's Committee Luncheon, June 23.

## Take advantage of FB member discounts for summer vacation

### Choice Hotels

To receive discount, reservations must be made at participating hotels by visiting [ChoiceHotels.com](http://ChoiceHotels.com) or calling 800.258.2847, using the applicable discount code for Farm Bureau members. Rate is subject to availability.

### Wyndham Hotel Group

Save up to 20% off the Best Available Rate at over 7,600 hotels worldwide. Call 1-877-670-7088 for Wyndham Hotel's advance reservations or visit online booking. The offer is not valid if hotel is called directly – caller must use toll free numbers listed above. Call Kane County Farm Bureau to receive the discount code.

### Up To 25% Off Car Rentals

Whether you're working or on a family vacation, it's easy to rent

a car for your travels...and your Illinois Farm Bureau membership makes it affordable, too. Save up to 25% on sports cars, luxury sedans, SUVs and other exciting and practical rentals from four of the nation's top companies. Participating companies include Enterprise, Alamo, National, and Hertz. Visit <http://www.ilfb.org/get-involved/membership-benefits/travel-benefits/carrental.aspx> for detailed information on how to take advantage of these discounts.

### Six Flags Member Discount

Thrill seeking Farm Bureau members and their families can once again get their kicks this summer by purchasing discounted tickets to Six Flags Great America in Gurnee.

Call Kane County Farm Bureau to receive codes for pur-

chasing discounted tickets online. The discounted price for a one-day ticket is \$43.70. Tickets are good any day the park is open, this year including Fright Fest! It does not include admission to Hurricane Harbor Water Park. For more information, call our office at 630-584-8660.

### Great Wolf Lodge

Farm Bureau members can take advantage of an exclusive discount at Great Wolf Lodge – America's largest family of indoor waterparks. Advance reservations are required. For reservations at any location, call 1-800-905-WOLF (9653) or visit [www.greatwolf.com](http://www.greatwolf.com). Must present valid membership ID or documentation at check-in. Call KCFB for the discount code.



### Recycle

### Scrap for CASH

Steel, Copper, Aluminum & Cars

Trucking & Dumpster Service Available

*"Helping to keep America Picked up for 45 years"*

Zimmerman Recycling, Inc.  
301 Industrial Drive, DeKalb  
(815) 756.8600

## Renewing your FB membership is now easier – online

The Illinois Farm Bureau provides many services to all Kane County Farm Bureau members. Renewing your membership online is another service they offer through their website. Did you know that you can renew your Farm Bureau membership, view payment history, print a lost membership card, and update account information including address, spouse/dependents, phone online all through the Member Center of the website? To do this, simply visit [www.ilfb.org](http://www.ilfb.org). Click on the Get Involved menu, and then Membership Benefits. You will then be asked to register using your Farm Bureau number and create a website username and password. The ability to check your membership information anytime online can help prevent unwanted Farm Bureau membership late fees, and avoid loss of COUNTRY insurance coverage.

**M.A.R.S., Inc.**  
**Starters - Alternators Generators**  
Automotive • Agricultural • Construction  
Lawn Equipment • RVs • Motorcycles  
High Amp Alternators  
**1-800-TEC-CITY**  
815-756-9019 800-832-2489  
DENSO BOSCH HITACHI MITSUBA MAGNETI MARELLI VALEO  
No time to have your unit rebuilt? Call for 100% NEW units

**YOUR CHOICE**  
For All Your 2016 Seed Needs

**NuTech Seed**

**8 #1 FINISHES**  
in 2015 University of Illinois Corn Trials

**11 #1 FINISHES**  
in 2015 Regional Illinois F.I.R.S.T. Trials

**7 Different Hybrids**  
**NUMBER ONE**

**CONTACT**  
**JOE GORENZ**  
815-566-5118

**800.942.6748** • [www.yieldleader.com](http://www.yieldleader.com)



## Raffle items

(continued from page 1)

the bucket of the prize(s) they hope to win (antiques, gifts, merchandise, crafts, etc.). The names of donors is displayed at the fair for all to see. Higher

value items are set aside for a 5 day Silent Auction at the Fair. In addition to the raffle and silent auction, the KCFB display includes farm animals, agricultural displays and fun activities for kids and adults.

All proceeds raised by the



Did you discover interesting antiques during your annual spring clean-out? Have antiques or specialty craft items? Consider donating to the KCFB FOUNDATION raffle and Auction at the Kane County Fair! Items often consist of antique pieces, craft items, framed artwork, and collectors' items. All of the funds from the raffle and auction go towards the foundation's scholarship and internship programs, which help students, pursue higher education in the field of agriculture.

1. Jerod Peters placed the winning bid on various silent auction items at the 2015 fair, including this framed Teeple Barn print.
2. Kane County fair-goers enjoy looking at the large display of raffle items.
3. Framed artwork is always a big hit at the silent auction bidders.
4. This rocking cow was donated by KCFB member Dave Klussendorf of Batavia and auctioned off in the 2015 bucket raffle.

## IAA Foundation Golf Outing

Golfers are invited to join the largest golf outing that benefits agriculture in the state of Illinois. The 20th annual Illinois Agriculture in the Classroom (IAITC) Golf Outing, hosted by the IAA Foundation, will take place June 9, 2016, at the Elks Country Club and Wolf Creek Golf Club in Pontiac.

Driving ranges open at 9:00 a.m., with a shotgun start at 10:00 a.m. at the Elks and 10:30 a.m. at Wolf Creek, for this scramble-style tournament. The first 200 participants will receive a unique golfer gift and all participants will compete for a number of great prizes and ultimate bragging rights. A social hour, auction and steak dinner, sponsored by COUNTRY Financial, will round out the evening.

The registration fee is \$140 per golfer, or \$560 per foursome. Those interested in attending the banquet only may register for \$50. New this year is the "FAST PASS" where, for only \$30, golfers gain access to all on-course contests, including the popular golf ball launcher.

Online registration is now available on the IAA Foundation website at [www.iaa-foundation.org](http://www.iaa-foundation.org) or by calling the Foundation office at 309-557-2230.

Illinois Agriculture in the Classroom is the top funding priority of the IAA Foundation, the charitable foundation of the Illinois Farm Bureau® which funds educational, research, and charitable activities that benefit Illinois farm families and ag.



bucket raffle and silent auction go towards KCFB Foundation's to the FOOD>Forward effort to increase local scholarships and Ag-in-the-Classroom activities. By donating an item businesses and individuals can receive FOOD>Forward yard signs

and/or window clings to show the community their support of local agricultural education efforts. For 2016, the Foundation awarded over \$16,000 in scholarships for college students pursuing careers in agriculture.

If you are interested in pro-

viding support for this year's bucket raffle and silent auction, or you know of a business or individual that might have an interest donating, please contact the KCFB office at (630) 584-8660 or feel free to stop by our office with your item(s)!

## Raise scholarship funds at the John Buck Memorial Golf Outing

The 16th Annual John Buck Memorial Golf Outing will be held on Wednesday, July 6 at Crystal Woods Golf Club in Woodstock. For details and to register, contact Sandy at [info@buckbrosinc.com](mailto:info@buckbrosinc.com) or 847-683-4440. Space is limited, so call early to make reservations.

All proceeds benefit the John Buck Scholarship fund, which is distributed to the Kane

County Farm Bureau FOUNDATION, as well as scholarship programs of the the Midwest Golf Course Superintendents Association and the Northwest Golf Course Superintendents Association.

The KCFB FOUNDATION John Buck Memorial Scholarship, funded through the golf outing, is awarded annually to student(s) seeking higher

education in agriculture related fields. For 2016, Luke Dunteman of Elburn was awarded the \$1000 John Buck Memorial Scholarship administered by the KCFB Foundation.

CONNECT WITH US



## Farm Bureau campaigns for Trans Pacific Partnership passage

At their May meeting, the KCFB Board of Directors voted to join a coalition supporting passage of the Trans Pacific Partnership. The Trans Pacific Partnership (TPP) is a trade agreement between the U.S. and eleven other Pacific Rim countries making up 40 percent of the global economy.


The American Farm Bureau Federation estimates that annual net farm income will increase by \$4.4 billion, driven by an increase of direct U.S. agricultural exports of \$5.3 billion per year upon full implementation of the TPP agreement, as compared to a scenario in which the U.S. fails to pass the agreement while the remaining member

countries proceed apace.

The TPP agreement is expected to increase cash receipts and net exports from Illinois by \$281.1 million and \$127.4 million per year respectively. Increased marketing opportunities for Illinois's farmers are expected to add more than 960 jobs to the Illinois economy. Eliminating tariffs and other trade barriers on Illinois's agricultural exports to TPP-partner countries will increase trade for a range of Illinois agricultural products, including pork, soybeans, beef and processed foods. Export sales make an important contribution to Illinois's farm economy, which had total cash

receipts of \$19.6 billion in 2014

Illinois Farm Bureau and Kane County Farm Bureau signed a U.S. Coalition for TPP support letter to Congress last month. The letter is meant to showcase broad agricultural and business support for TPP at the state and local level. While there's no indication that either the Senate Finance Committee or the House Ways and Means Committee will begin hearings on the trade deal before Congress adjourns in mid-July for conventions and August recess and despite the political headwinds, Farm Bureau will push for a vote on TPP before the 114th Congress adjourns.



### DAIRY BREAKFAST & Farm Tour

**Saturday, June 18, 2016**  
6 - 11 a.m.

**Dale & Linda Drendel Farm**  
15N057 Walker Rd.  
Hampshire, IL

**See dairy cows being milked, enjoy a hearty farm breakfast and experience the country life at a local dairy farm.**

<p style="text-align: center;"><b>Breakfast</b></p> <p style="text-align: center;"><b>Pancakes, Sausage, Applesauce, Cheese, Milk, Coffee and Ice Cream</b></p>	<p style="text-align: center;"><b>Activities</b></p> <p><b>6 - 9 a.m.</b> - Watch dairy cows being milked in a modern parlor</p> <p><b>6 - 11 a.m.</b> - Breakfast - Activities for the whole family including milk a cow, sit on a tractor, scavenger hunt, and photo booth.</p>
---	---

**The Drendel Farm is located two miles west of Hampshire.**

**From Sycamore,** go north on Rt. 23, travel east on Plank Road for 7 miles until you reach Burlington. Turn left, going north, on Burlington Rd./Walker Rd., for 2½ miles.

**From Genoa,** go east on Rt. 72 for 6½ miles until you come to Walker Road. Turn right, going south on Walker Road for ½ mile.

**From Hampshire,** go 2 miles west on Rt. 72, turn left going south ½ mile on Walker Road.

**From Burlington,** go 3 miles north on Walker Road.

*Look for signs as you near the farmstead.*

**Donation**  
*(Includes breakfast and all activities)*

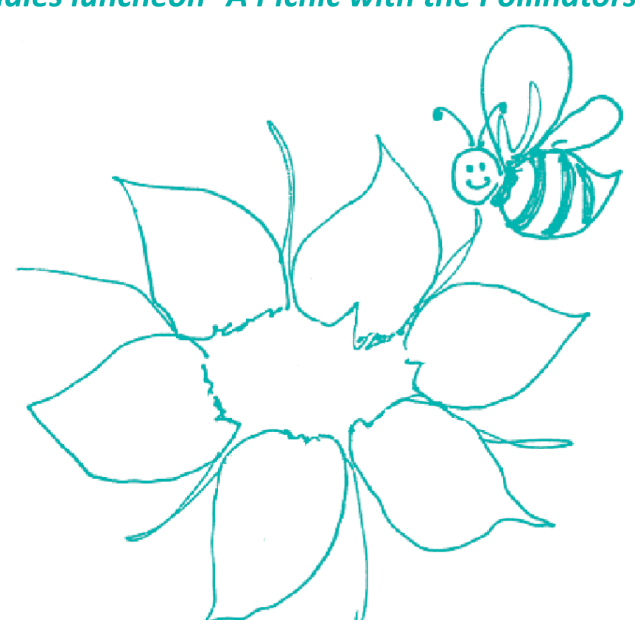
**Adults . . . . . \$8**  
**Children 5 - 10 . . . . . \$5**  
**Children 4 & under . . . FREE**

**Plenty of Free Parking**  
**Handicapped Parking Available**

The Dairy Breakfast and Farm Tour is being sponsored by Dairy Farmers from DeKalb & Kane Counties

For more information contact Dairy Breakfast Chairman Bill Lenschow, 815/895-9690

**The KCFB Women's Committee invites you to a ladies luncheon "A Picnic with the Pollinators"**



**Thursday, June 23, 2016**  
**Northern Illinois Food Bank**  
**featuring local beekeeper, Harry Patterson.**

**Registration starts at 11:30am, lunch served at 12 pm**

**Please RSVP by June 7**  
**Cost: \$10/person, payable to KCFB**