

Kane County Farmer



**KANE COUNTY
FARM BUREAU®**
Farm. Family. Food.™

Enhance the quality of life for member families;
Promote agriculture, farms & food; and,
Advocate good stewardship of our land and resources.

VOL. 82 NO. 6 JUNE 2017

Firefighters use local farm, AGCO/GSI resources for training

When people first think of a firefighter, they often think of a person with a black helmet, driving a big red truck and heading to structure fire of some sort. While all this is true, firefighters do more than just simply fight fires. From car accidents to medical calls, firefighters are on the scene for almost every 911 emergency call. In Illinois, a program called MABAS (Mutual Aid Box Alarm System) is put in place to train departments together as a team to handle large scale rescue situations.

MABAS, in partnership with IEMA (Illinois Emergency Management Agency) establishes a statewide, non-discriminatory mutual aid response system for fire, EMS and specialized incident operational teams. The program trains these teams for hazardous materials, underwater rescue/recovery, technical rescue and state sponsored urban search and rescue. MABAS Division 13 is in Kane County and includes the fire departments in Batavia, Geneva, Elburn, St. Charles, North Aurora, Aurora, Kaneville, and Maple Park.

On Friday, April 14th and Saturday, April 15th the District 13 MABAS team participated in a grain bin rescue training drill at the Biddle Family's farm in Hampshire, IL. This was a two-day training event, including an appearance from a Superior Air-Med helicopter.

MABAS requires divisions

to hold quarterly drills to practice as a rescue team. Teams must practice for specific situations including structure collapses, confined spaces, trench

deal with various hazards set out for them. Problem solving is a big part of the job, and in this drill, team members had to figure out how to solve new and

practice on a farm. Not only did it allow for a large scale, real-life training scenario but it helped get everyone in the team more familiar with all the haz-

ard training to protect the farm community" said Biddle. "I think the training exercise was received very well, and I think everyone had a good time utilizing all the farm had to offer."

Firefighters ended up practicing a grain bin rescue 3 different times, improving their teamwork and rescue pace each time. On their first run, it took the team just over 2 hours to perform the rescue. By the third run, the team successfully made the rescue in just over 45 min with fewer people than in the first run.

At the conclusion of the training session on Saturday, the firefighters were treated to a pork chop lunch courtesy of the Kane County Farm Bureau Young Farmers Committee. The GSI grain bin and rescue tube, donated by AGCO, was on display at the lunch. The firefighters were excited to see such a useful tool being used for both learning and promoting farm safety.

"This was our first drill of the year, and was a great training exercise. The training committee is interested in looking for more ways to incorporate both farm safety and possibly the grain bin dis-

(continued on page 8)



Left: District 13 MABAS team members (l-r) Dave Oliver, Trevor Hall and Matt Hanson are joined by Young Farmers John Biddle, Wayne Gehrke, and Joe Gorenz with the GSI model grain bin and rescue tube, donated by AGCO. John Biddle is holding a rescue auger, which was used for the first time during their grain bin rescue training drill. The rescue auger, made by KC Supply, was given to the Elburn Fire Department by the Young Farmers committee for their future use.

Below left: Jeff Grzywa, an engineer with the Maple Park fire department, explains to Superior Air-Med helicopter pilot Jerry Renninger how a rescue tube is used in a grain bin rescue using the AGCO display model. Pieces of the rescue tube (in the middle of the small bin) are stuck into the grain and latched together around a victim. Grain inside the rescue tube is removed by hand or with a rescue auger, ultimately freeing the victim.



Left: This rig from the Batavia Fire Department was used as a pulley base during the grain bin rescue drill. The ladder can extend up to 100 ft and the basket at the end can carry over 500 lbs. Rigs like this one are used by fire departments to perform high angle rescues.



rescues, and high angle rescues. The grain bin drill was unique, as it allowed the team to practice in all 4 required areas.

The whole thing started when John Biddle, Vice President of the Kane County Farm Bureau Young Farmers Committee, was approached by neighbor Matt Hanson, a Lieutenant at the Elburn & Countryside Fire Department. Hanson informed Biddle that they had a lot of new members of their taskforce who had yet to be exposed to a grain bin rescue situation and that they were searching for a location to hold a training session.

"The Biddle family was very accommodating and basically gave us free range of the farm for 2 days. We were able to run the drill from start to finish like it was a real call" said Hanson. "It was a great drill, and it forced the team to creatively

unfamiliar issues in order to perform a successful rescue."

Hanson and other drill supervisors were excited to get to

ards working farms present.

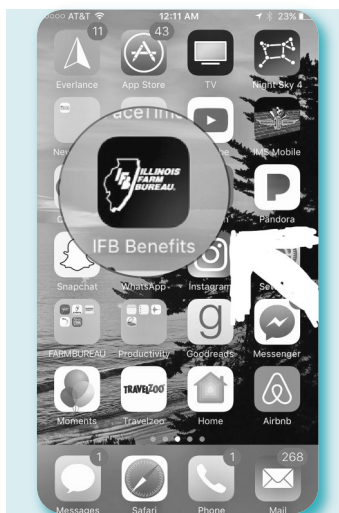
"It was good to have them out at the farm, for obvious reasons, and good to see them

Thousands of new members benefits

KCFB announces discounts for Farm Bureau members and COUNTRY Financial clients

Kane County Farm Bureau is pleased to announce membership benefits from THOUSANDS, that's right, THOUSANDS of new member benefit providers. These include everything from national & international brands to mom & pop operations in your hometown. From Big Rock to the Big Apple, Kane County Farm Bureau has some exciting new member benefits and discounts in store for our members.

For iOS devices (iPhones and iPads), you can download the Illinois Farm Bureau Member Benefits app now at



Search the app store on your iOS device (iPad or iPhone) to download this new Farm Bureau members benefit app and start saving at many of the local stores, restaurants and service providers you already frequent in the Fox River Valley and beyond. Enable location service to get alerts and reminders while you travel. Call 630 584-8660 for more information.

<https://itunes.apple.com/us/app/il-farm-bureau-member-benefits/id1230637614?mt=8>, or simply search for Illinois Farm Bureau Member Benefits in the app store. Sorry android users, the mobile platform for droid devices is not yet active. However, any member can visit our new membership platform and check out these membership benefits NOW at <https://ilfb.abenity.com/>.

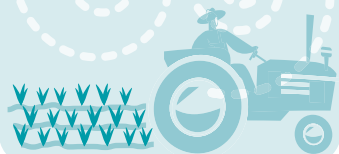
For your initial login, you will need to create a username and password, enter your name and address AND enter your Farm Bureau membership number, 045-xxxxxx (with NO suffix) to verify your eligibility for member discounts. For more information or to obtain your membership number or initial sign-up assistance, call the Kane County Farm Bureau at 630 584-8660.

Watch here next month for more information on NEW Farm Bureau membership benefits.

DATES TO REMEMBER

June

- June 6**
Board of Directors, 7:30 pm
- June 8**
IAA Foundation Ag-in-the-Classroom Golf Outing, Pontiac
- June 12-16**
Summer Ag Institute I
- June 14**
Women's Committee, 9:15
Young Farmer BBQ, Biddle Farm; 5:00 pm
- June 15**
Ag Committee, County Bldg., 10 am
- June 21**
Farmland Assessments, 7 pm (RSVP req'd)
- June 27-30**
Summer Ag Institute II



June Featured Product Pork Chops

Our featured product for the month of June is Inboden's Meats delicious seasoned pork chops. Each 5 lb. box comes in 8 oz. or 10 oz. and boneless and bone-in varieties. Each chop comes in a vacuum sealed plastic bag. Just thaw, cut it open and pour it out on your grill for a perfectly seasoned, thick, juicy pork chop every time. Price is \$25 per box for KCFB members, \$23 for plus members and \$28 for non-members. It's a Farm Bureau member favorite! Available at Kane County Farm Bureau, Randall Road and Oak Street in St. Charles.

Order Fresh Peaches

Beginning next month, the Kane County Farm Bureau will be taking orders for juicy, homegrown Peaches fresh from Rendleman Orchards, a southern Illinois grower. Order forms and more information will be available in next month's publication.

KCFB Board meeting review

The May meeting of the Kane County Farm Bureau Board of Directors was called to order at 7:30 pm on May 4, 2017. COUNTRY Financial Aurora Agency Manager Kevin Gomes was present to give a report of the Agency's production, manpower and new products.

A contract for support of University of Illinois Extension programming for 2017-18 was approved as presented. The Board also reviewed a recently submitted KCFB application for a technology grant from the Illinois Farm Bureau, to upgrade to a point of sale transaction register and iPad. Correspondence from the auditing firm of Clifton, Larson, Allen related to annual: audit findings, internal controls evaluation and 1 and 3 year engagement proposals for audit and tax services, was received. No action was taken.

The Board reviewed the results of the recently concluded Touch-A-Tractor event and the KCFB Foundation's Winner's Choice Tractor Raffle.

Attendance at the three day event was estimated at 3,100 people, based on gate receipts and raffle ticket sales. Touch-A-Tractor concluded, as tradition dictates, with the announcement and awarding of KCFB Foundation college scholarships, and drawings for the Winner's Choice raffle and a free pedal tractor giveaway. A copy of the raffle report filed with the County Clerk was provided.

President White gave his report, starting with distributing the IAA Articles of Incorporation & Standing Policy Resolutions. White also presented follow up information on the funding of the association's employees retirement program.

Arnold gave a Managers report. He informed board members that April 1st marked the start date for PM (Professional Membership) class and June 1 would be the start date for a new Member Benefit mobile phone app and website that would expand KCFB member benefits from dozens of businesses to thousands. Arnold also

announced that AGCO Parts, Batavia and their affiliate, GSI has given the grain bin safety display used at T-A-T to the KCFB for its use in farm safety, fire safety and first responder training on the stipulation that AGCO be allowed to use the display anytime at its sole discretion. KCFB will purchase a trailer for the grain bin safety display and develop additional materials for its use by other CFB's, fire departments and community groups for farm safety presentations. Arnold also provided copies of the IFB District 1 Director's report, the 2017 Kane County property tax bill and informed directors that IEPA Livestock Regulations Guides were available free to members owning, expanding or constructing facilities. The Board approved a management suggestion for a tax parcel division.

Mike Kenyon reported on County Board and Forest Preserve District activities. The County Board will vote on a controversial zoning petition in May. The FPD's \$50 million

bond referendum was approved by voters in the April election.

Bill Collins gave the PR & Membership Report. He informed the board of contributions to the KCFB Foundation during the previous month including: Harvest for ALL Contributions by: Stojan's Vegetables to Salvation Army of St. Charles and Salvation Army of DeKalb.

Wayne Schneider reported on government affairs topics. Directors were reminded of 2 requested actions on federal issues, tax reform and regulatory reform.

A written AITC report was presented, informing directors that the 2017 SPROUTS program was successful and both graduate credit Summer Ag Institutes for teachers were full.

Joe White delivered the Foundation report, sharing the names of the four 2017 Winner's Choice Raffle winners and 14 scholarship award recipients with directors. He also reminded the board that since the winner of the grand prize chose a cash award, the Foundation has a 1953 Farmall Super C to sell. Interested parties should contact Steve Arnold.

Arnold gave a Women's

Committee update, telling directors that a "Farewell & Thank You" banquet was in the works, tentatively planned for August 2.

Correspondence was circulated from: AGCO-AGCO Parts - a thank you for working with the FB "team" at Touch-A-Tractor and enclosing \$4,000 for 2018 Scholarships; University of Illinois Extension/4-H Foundation - thanks for \$1420 donation to Pork Chop Dinner Fundraiser; Brad Gorenz, thanks for President's Scholarship, KCFB Foundation; Catherine Gorenz, thanks for General Ag Scholarship, KCFB Foundation; Erik Dunteman, thanks for AGCO Parts Division Scholarship, KCFB Foundation; IAA Foundation - copy of letter to Susie Thompson, \$1300 Collegiate Farm Bureau Scholar; Monica Zimmerman - thanks for the Chuck Swanson Memorial Scholarship; The Holmstad - thanks to Suzi Myers for bringing baby chicks to residents; Big Rock Library - thanks for book donation during National Library Week

The next scheduled Kane County Farm Bureau Board of Directors meeting will be held on Tuesday, June 6th at 7:30pm.

In appreciation...

To thank those who have helped the Kane County Farm Bureau & Foundation in some way, big or small, to remind us of our history, who we are and whom we serve, and to advance our mission to make a brighter tomorrow for farms, families and food.

Alyce Konen - for a January 1941 (25th Anniversary) IAA Record, the official publication of the Illinois Agricultural Association.

Virginia Kammerer - for sheet music and lyrics to "Farm Bureau Spirit," from a 1950's collaboration between Columbia Records, American Farm Bureau Federation and Purdue University. (Yes, we have the album!)

Biddle Bros. Farms & Mike & Helen Biddle - for hosting a farm safety and grain bin rescue

program for area fire departments.

Ken Gustafson - for contributing a portion of his "Winner's Choice Tractor Raffle" winnings back to the KCFB Foundation for future scholarships.

John Biddle, Andy Lenkaitis, Wayne Gehrke and Joe Gorenz - for preparing lunch for area fire departments, and to the entire Young Farmers Committee for donating a rescue auger to the Elburn Fire Department.

AGCO Parts, Batavia employees - for a \$4,000 contribution to KCFB Foundation for 2018 AGCO sponsored scholarships.

Beth Gehrke, Sandy Gould, Jan Strauss, Lori Williams and the Kaneland Elementary Reading Spec-

ialists for reading books to 3rd grade classrooms as part of our annual SPROUTS program.

John Doughty, Beth Engel, Beth Gehrke, Gerald Gaitsch, Nan Long, Carolyn Gehrke, Bill Collins, Andy Lenkaitis, Donna Lehrer and Dale Pitstick - for contacting members of Congress about the needs of farmers and agricultures as debate proceeds on federal tax reform.

Chris Gould, Louise Johnson, Bob Gehrke and Joe White - on submitting comments to the Federal Register on regulatory reform in Washington D.C.

Dan Heinrich and Michael Heinrich - for repairs and service on the KCFB Foundation's 2018 Raffle Grand Prize, a 1965 Ford F-100 pick-up truck.

CONNECT WITH US



You receive the *Kane County Farmer* because you are a Farm Bureau member. If you are a farm operator or owner, you benefit from a local, state and national organization committed to agriculture and your way of life.

If you do not have direct ties to farming, your membership helps promote local farms and farming, encourages wise use of our limited natural resources and preserves farmland and our agricultural heritage while allowing you to enjoy COUNTRY insurance and the many other benefits of one of Illinois' premier membership organizations.

We appreciate your membership and continued support and we welcome your comments on the content of the *Farmer*. We encourage you to make recommendations about farm, home, food, natural resource, renewable energy or agricultural heritage and history related topics for inclusion in future issues of the *Farmer*.

KANE COUNTY FARM BUREAU BOARD ATTENDANCE JANUARY 2017 THRU DECEMBER 2017

	JAN	FEB	MAR	APR	MAY	JUN	JULY	AUG	SEP	OCT	NOV	DEC
C. BRADLEY	X	X	X	X	X							
F. CARLSON	X	X	X	X	X							
B. COLLINS	X	X	X	X	X							
C. COLLINS	X	X	X	X	X							
J. ENGEL	X	X	X	X	X							
G. GAITSCH	X	X	X	X	X							
B. GEHRKE	X		X	X	X							
W. KECK	X	X	X	X	X							
M. KENYON	X	X	X	X	X							
K. KETTLEKAMP	X	X	X	X	X							
D. LEHRER		X	X	X	X							
N. LONG	X	X		X	X							
D. PITSTICK		X		X								
W. SCHNEIDER	X	X	X	X	X							
J. WHITE	X	X	X	X	X							

Kane County Farmer

KANE COUNTY FARM BUREAU PUBLISHED MONTHLY

Steven J. Arnold, Editor

Suzi Myers, Ag Literacy Coordinator

Audre Pack, Training Specialist

Elizabeth Polovin, Member Services Coordinator

Kristi Van Oost, Development & Program Coordinator

Valerie Johnson, Administrative & Program Assistant

OFFICE: Randall Rd. between Routes 64 & 38

Address: 2N710 Randall Rd., St. Charles

PHONE: 630-584-8660

info@kanecfb.com www.kanecfb.com

OFFICE HOURS: 8:30-4:30 Monday through Friday

(USPS No. 289700)

POSTMASTER: Send address changes to Kane County Farmer

2N710 Randall Rd., St. Charles, IL 60174

Periodical Postage • Paid to St. Charles, IL 60174

Year Subscription: \$2.00

<p>■ DISTRICT 1 Aurora, Sugar Grove, Big Rock Twnshp. Nan Long 11461 E. County Line Rd. Big Rock, IL 60511 815-693-7214 Donna Lehrer 7S027 Jericho Rd. Big Rock, IL 60511 630-556-3476 William Keck P.O. Box 281 Sugar Grove, IL 60554 630-466-4668</p>	<p>Joe White President 47W727 Main St. Rd. Elburn, IL 60119 630-557-2517</p>	<p>Mike Kenyon Secretary/Treasurer 1250 E. Main St. South Elgin, IL 60177 847-741-1818</p>
<p>■ DISTRICT 2 Kaneville, Blackberry, Gen./Bat. Twnshp. Bill Collins 1125 Lewis Rd. Geneva, IL 60134 630-484-6852 Karl Kettelkamp OS860 Rowe Rd. Elburn, IL 60119 630-365-2713</p>	<p>■ DISTRICT 3 Virgil, Campton, St. Charles Twnshp. Frank Carlson 104 Sumac Court St. Charles, IL 60174 630-513-9980 Chris Collins 1143 Anderson Elburn, IL 60119 630-934-4642 Dale Pitstick 128 N Hadsall St. Genoa, IL 60135 630-816-0223</p>	<p>Craig Bradley 37W791 Orchard Lane Elgin, IL 60124 847-888-2380</p>
	<p>■ DISTRICT 4 Burlington, Plato Elgin Twnshp. Beth Gehrke 12N860 US Hwy. 20 Elgin, IL 60124 847-697-2538</p>	<p>■ DISTRICT 5 Hampshire, Rutland, Dundee Twnshp. Joe Engel 516 Sawgrass Ln. Hampshire, IL 60140 847-347-5561 Gerald Gaitsch 10613 Brittany Ave. Huntley, IL 60142 847-669-2003 Wayne Schneider Vice President 721 Lindsay Lane West Dundee, IL 60118 847-428-0488</p>

Looking to get involved in community? Join the Young Farmers for a June BBQ

You're invited to join the Kane County Farm Bureau Young Farmers Committee for their annual Summer BBQ! Join young (18-35 years), local agriculture enthusiasts from around Kane County as they socialize, dine on pork chops, and learn more about upcoming local and statewide activities for 2017. Andy Lenkaitis, District 1 YL rep for the Illinois Farm Bureau, will be on hand to discuss Collegiate Farm Bureau, IFB Young Leader programs and unique programs and activities of CFB Young Farmer Committees

from around the state.

The pot-luck dinner will take place Wednesday, June 14th at the Biddle Farm in Elburn. Young Farmer project tasks (Farm Zoo gate repairs, County Fair display construction, etc.) will begin at 5 pm. Social hour begins at 6pm with a pork chop dinner and a presentation to follow. Anyone is welcome to join, and new faces are always welcome. For more information or to RSVP (by Monday, June 12), please contact Kristi Van Oost at (630) 584-8660 or info@kanecfb.com.



Beef store is now open!
By appointment only

farmdirectBLACKANGUS.com

100% hormone free beef.
Selling individual cuts. Buy as little or as much as you want.

815.895.4691
Mark & Linda Schramer, Owners
8N840 Lakin Road, Maple Park

 **Sample Packs make great gifts!**

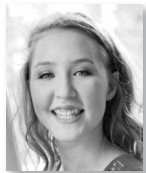
KCFB Foundation scholarship recipients

The Kane County Farm Bureau Foundation will award over \$14,000 in scholarships this year to 14 high school and college students. The Kane County Farm Bureau established the Foundation in 1989 to carry out charitable work in the advancement of agricultural literacy and prepare students for careers in the agriculture industry. Since then it has awarded hundreds of thousands of dollars in college scholarships and internships.

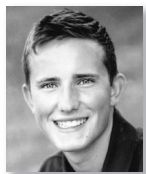
Six scholarship recipients are not listed below and were profiled in our May issue. They are **Jessica Bowgren** of Maple Park (President's Scholarship), **Allison Steininger** of Sugar Grove (John Buck Memorial Scholarship), **Monica Zimmerman** of Batavia (Chuck Swanson Memorial Scholarship), **Susie Thompson** of Maple Park (Mary L. Heckel-Blickle Memorial Scholarship), **Heidi Harbecke** of Sycamore (AGCO Global Women's Network Scholarship), and **Erik Dunteman** of Big Rock (AGCO Parts Division Scholarship).

The following students were selected to receive \$1,000 KCFB Foundation Scholarships. Congratulations to these future ag industry leaders.

have her excited to explore her options at Joliet Junior College and discover which agriculture related career best fits her interests and skill set. Due to the lack of an FFA chapter at Batavia High School, Jacie was able to be involved in FFA through the Kaneland chapter. She is the daughter of Mike and Angela Panek.



Agriculture has had a huge presence in the life of **JAIDE PANEK**, thanks to the farm her grandparents live on. Growing up, she enjoyed showing both pigs and cattle with her sister and cousins. Heading into her second year at Joliet Junior College in fall, Jaide intends to obtain her Associate's Degree in agribusiness and is looking forward to getting the opportunity to explore various animal related careers through internship opportunities. She has been active in FFA and 4-H as well as Student Council in high school. She is the daughter of Mike and Angela Panek.



Wildlife conservation major **KYLE YORKE** will be a sophomore at Southern Illinois University in the fall. Son of Paul and Pam Yorke of Batavia, Kyle attended Marmion Academy where he was active on the tennis and cross country teams, a member of the band, and in the U.S. Army JROTC. His interest in agriculture started in high school, when he got the opportunity to work on various local farms, each specializing in a different area. Looking at the future, Kyle hopes to become a wildlife biologist with the U.S. Fish and Wildlife or the Department of Natural Resources.

been exposed to the world of agriculture since he was a child, and started helping out around the family farm at a young age. He was presented with the opportunity to manage Kettelkamp Farm and has not looked back. Jackson intends to attain his Bachelor's Degree in Agriculture and use his education to help lead him down the path to a successful career in farming. He graduated from Kaneland High School in May where he was active in the Kaneland FFA chapter serving as treasurer and FFA Farm manager and competing in events like land-use, ag mechanics, and agronomy.



Batavia resident **JACIE PANEK** will attend Joliet Community College in the fall, intending to study animal science and nutrition. Jacie has been involved in 4-H since she was eight years old, showing both pigs and cattle. Her divided interest in animal nutrition and veterinary science



WILLIAM DUMOULIN will be a freshman at Elgin Community College, majoring in engineering. He is from Hampshire and is the son of Pat and Lisa Dumoulin. A fourth generation farmer, William has always loved working alongside his grandpa, father, uncle, and cousins on their farrow-to-finish hog farm. Upon completion of his Associate's Degree in engineering science William plans to pursue his Bachelor's in Engineering before returning to the family farm to use his education to benefit the farm with various engineering advancements. He was active high school athlete, participating in basketball, baseball, and track & field.



JACKSON KETTELKAMP, son of Karl and Julie Kettelkamp of Elburn, plans to study agriculture production at Joliet Junior College in the fall. Jackson has



Not being able to imagine herself in any industry other than agriculture led **CATHERINE GORENZ** to select her major in Agricultural Communications. She is from Maple Park and will be a sophomore this fall at Waubensee Community College. Catherine grew up helping take care of her family's livestock and also spent a lot of time with her horses. Being involved in agriculture has taught her that success requires hard work and passion. She has been active in FFA and 4-H, having served as the secretary and reporter for Kaneland High School's FFA, and president, vice-president, treasurer, and photographer for her 4-H club. Catherine is the daughter of Edward and Anne Gorenz.



VANESSA GOULD will be a sophomore at the University of Illinois this fall, majoring in Animal Sciences. She has been active in 4-H, FFA, varsity basketball, student council, and the National Honor Society.

Vanessa chose her major because of her strong love for animals and appreciation for the atmosphere of the agricultural community. She hopes to pursue a career in animal ecology or zoology, and would like to learn more about protecting endangered species and their environments. Vanessa also would like to spend several years traveling and gaining experience to eventually become an educator in those areas. She is the daughter of Chris and Dana Gould.



ALICIA SUNDERLAGE attends Southern Illinois University majoring in Agricultural Communications. She was very active in FFA during high school, and is now a member of SIU Collegiate FFA. Alicia's agricultural experience includes working on a horse farm, where her responsibilities included baling hay and maintaining fences. She looks forward to using her degree and knowledge about farming to educate others about their food and the agriculture industry. Alicia is the daughter of Gordon and Jean Sunderlage of Hampshire.

Farmland assessments topic of June 21 meeting

Kane County Farm Bureau invites regular members (farmers and farmland owners) to a 6:30 pm meeting on June 21 to learn more about farmland assessment increases. The meeting will be hosted by the KCFB in conjunction with the Kane County Assessor's Office.

The meeting will be held at the Kane County Farm Bureau building and pre-registration is required. Members can register by calling 630-584-8660 by June 18.

Due in part to a 2013 legislative change, assessed values on all cropland soils are increasing. The amount of change will depend on the soil type. Poorer soils can expect to see a higher than 10% increase while better producing soils can expect an increase of less than 10% from the preceding years value. This rise in assessed values will be reflected in property tax bills for taxes payable in 2017 and for several years to come.

Presentations will be given by Brenda Matherly, Assistant

Director of Local Government with Illinois Farm Bureau and Mark Armstrong, Chief County Assessment Officer for Kane County. Matherly will cover topics including, the history & operation of the Farmland Assessment Law in Illinois, Farm Bureau's support for its implementation, and role in its application. Armstrong will present information on Kane County demographics, tax rates and how they are developed by taxing bodies. Both will provide farmers and farmland owners with a better understanding of how farmland assessments are calculated and what will be the long-term impact on those values.

In addition to pre-registration, written questions in advance of the meeting are appreciated to assist the presenters in addressing the concerns of meeting participants. Farm Bureau staff will ask all who pre-register if they have questions to be addressed though the presentations, and will also distribute index cards for written questions at the meeting.

Regulations, farmers and the law

Opinion by Zippy Duvall, President, American Farm Bureau Federation

The Regulatory Accountability Act, a bipartisan measure introduced by Sens. Rob Portman (R-Ohio) and Heidi Heitkamp (D-N.D.), would restore reason to our nation's regulatory process. Regardless of what anyone believes about a specific issue – safety, health or the environment – the underlying regulatory system should be open, transparent and fair. Today, it isn't.

Regulatory reform is a priority for America's farmers and ranchers, who, in spite of documented environmental improvement, are under siege by federal regulations that have exploded in scope and severity, often in defiance of law. Farmers and ranchers are vulnerable to this regulatory overreach because our work is so connected to natural resources.

Regulations are necessary, of course, to public health, environmental quality and even market fairness. But, when regulatory actions ignore or surpass the

laws on which they are based, the results can be disastrous. Overreaching bureaucrats tell farmers they can't plow dry fields. They designate dry ditches as navigable waterways. They classify whole crops such as corn, soybean and wheat as "chemical hazards."

Today, even in light of a reform-minded administration and EPA Administrator Scott Pruitt's "Back to Basics" agenda, federal regulators would be similarly able to skirt the law to wield inordinate power. Agencies have repeatedly plowed through the legal constraints placed on them by



Zippy Duvall, a cattle and poultry farmer from Georgia, is president of the American Farm Bureau Federation.



Magnolia
PRIVATE DUTY HOME CARE ASSISTANCE INC.
847-841-9272
www.magnoliaprivateduty.com

- companionship
- errands/transportation
- medication reminding
- light housekeeping
- personal laundry
- meal preparation
- personal care
- post-surgery / rehab assistance

Licensed & Insured



Lucky's ENERGY SERVICE

We offer wet hosing, bulk tank fills and package lubricants – D.E.F, Oil, Hydraulic, Diesel and Gas for all your needs.

We are a 24/7 Fuel Supplier servicing Illinois & Wisconsin. Call us today at 847-994-3010 or visit us online at www.luckysenergy.com
Growing To Serve You Better

AG LITERACY CORNER

By Suzi Myers



As many of you know, last spring and summer I spent in a sling after injuring tearing my bicep and rotator cuff in a hiking accident. The worst part of that experience was that I was beached from my kayak until late October. I'm happy to say that this year all is well and my kayak and I've enjoyed many a run down the Fox River.



There's something about being out on the water, quietly paddling. The peacefulness is like an elixir to my soul. All the stress and stressors of my life just fade away.

We do the hard work first by paddling against the current, so we can take it easy on the return trip to our docking place. Sometimes we work very hard

to get to our turn around place, only to quickly get back to our cars. It is amazing how much the current plays a part in our journey on the rivers, unlike when we paddle on a lake.

As we travel down the Fox, we see many different animals. The turtles that sit on a log sunning themselves and then quickly dart into the water when we get too close; the Great Blue Heron and Egrets that stand silently along the shoreline awaiting a fish; the carp that jump out of the water; the Turkey Vultures, Bald Eagles, and Hawks that soar through the air looking for prey; and all the ducks and geese that paddle through the water. There's never a dull moment, if we keep our eyes open.

KANE COUNTY FARMER

I've done a bit of research concerning kayaks. The first kayaks were created thousands of years ago by arctic inhabitants now known as the Intuits. These early indigenous people, formerly known as Eskimos, inhabited areas of Greenland, the northeastern point of Russia, Alaska, and the uppermost regions of Canada. Early Eskimos made kayak frames using driftwood, and then wrapped them in sealskins which made them virtually unsinkable with air-filled seal

bladders. These early kayaks were used during summer months primarily for hunting and fishing. The word "kayak" literally means "hunters' boat." Europeans eventually discovered the versatility of the kayak, and exchanged the sealskins with fabric covers. In 1936, kayak racing became a part of the Olympic Games in Berlin.

The 1950's brought the development of the fiberglass kayak, and a company known as Valley Products began produc-

ing the first fiberglass kayak. Plastic kayaks were introduced in the 1980's, and kayaks continue to become lighter, sturdier, and more versatile. So, thanks to the Intuits and the many innovations following their first "hunter's boat", I am able to lift my 20 pound kayak in and out of my car by myself, enabling me to enjoy the peacefulness of the Mighty Fox whenever possible. Maybe I'll see some of you enjoying a paddle or a walk in the woods during this glorious time of the year.

Book of the month

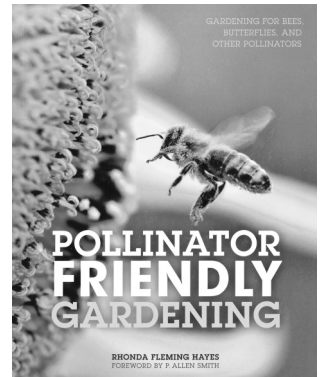
Since one out of every three bites of food we take is due to pollination, making our home landscaping more pollinator friendly seems like a great idea.

What is really interesting about this book is that it not only states an idea, but gives background information that supports the thought. Understanding pollinators is the first chapter, which tells of common and unusual pollinators. Also covered in the book are larval host plants, nesting sites for bees, how to provide water and other liquids, how to provide shelter and then protecting the pollinators while controlling pests. There is an abundance of knowledge within the pages of this book.

I knew this book would be good when I read this sentence in the first paragraph: "It starts with changing people's mind set about 'bugs' ... the old way of thinking is that all insect pests should be completely stamped out ... the consequence of attempting to do so is the loss of good bugs. A more positive approach is to recognize that insects are valuable components to a healthy garden's ecosystem. All insects. The key is to encourage the beneficial and manage rather than try to eliminate those that cause damage." -P. Allen Smith.

This is only one of the interesting books available for check out from our agricultural library here at the KCFB. Our library

began due to a request years ago by Bob Konen and Dean Dunn. We have an ever growing selection of titles. Feel free to come in to browse in our library and to check out books of interest.



Pollinator Friendly Gardening by Rhonda Fleming Hayes

HINCKLEY-BIG ROCK HIGH SCHOOL NEWSLETTER, MAY 2017

From the Principal's Desk ...

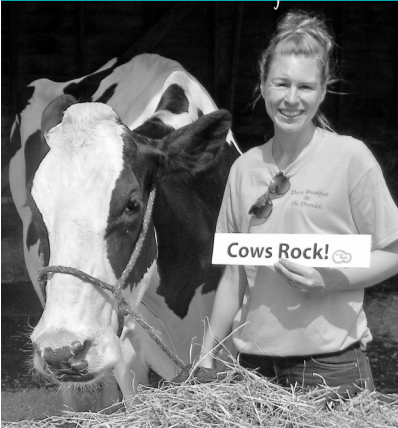
As a member of the high school staff, I am a part of numerous conversations teachers engage in around what it means to prepare our students for life after HBR. We encourage our students to think about the options they have. We create opportunities for them to explore their interests, develop particular skills, and tap into their leadership potential. We spend time with them planning for their futures. We support them, in our words and actions, to fulfill their dreams.

The result? Our graduates go on to do many great things. There is no better feeling for us than witnessing the individual success of our students. **Toward that end, on behalf of myself and the entire staff of Hinckley-Big Rock High School, I would like to congratulate Class of 2013 graduate Lauren Dunteman on recently being named the Outstanding Senior in the College of Agriculture and Life Sciences at Iowa State University. Lauren graduated Summa Cum Laude and was chosen to be the Marshall representing the College of Agriculture and Life Sciences at the University Commencement. Great job Lauren!**

To all of you ... Thank you for another great school year! I would love to use this space to report on the other great things our graduates are doing. Please feel free to share with me any information that you would like about what you (as a graduate) or your son/daughter (parent) has been doing since they left HBR. It would be great to celebrate monthly.

Jay Brickman, Principal
Hinckley-Big Rock High School

June is National Dairy Month...



Be sure to celebrate by thanking a dairy farmer! Kane County is home to several Dairy Farms, including Lenkaitis Holsteins Dairy farm in St. Charles, IL. Sarah Lenkaitis (pictured) and her husband Andy help run the family farm. Dairy cows need to be milked twice a day, every day to keep them healthy. Dairy farmers work extremely hard to manage their herd. Next time you treat yourself to a glass of milk or an ice cream cone, be sure to thank a dairy farmer!

Helping you protect what matters most



AUTO | HOME | LIFE | BUSINESS | RETIREMENT

- | | | |
|---|--|---|
| 
Bob Effner , CLF®, LUTCF
St. Charles - Elgin
Agency Manager
St. Charles
630-584-0001 | 
Edward Stuehm
Geneva
630-845-8245 | 
Ashraf Gerges
Aurora
630-898-3750 |
| 
Todd Wilcox
St. Charles
630-762-1326 | 
Michael O'Brien
Geneva
630-762-0852 | 
Sherri Schramer
Elburn
630-365-9500 |
| 
Bobbi Boston
St. Charles
630-485-5155 | 
Bob Baty
Geneva
630-492-5317 | 
Dominick Davero
Elburn
630-365-3737 |
| 
Keith Eakins
St. Charles
630-762-1324 | 
Luke Fawkes
Elgin
847-742-0001 | 
Chuck Quick
Hampshire
847-683-2100 |
| 
Kelly Landorf
St. Charles
630-762-1328 | 
Jonathan Gonzalez
Elgin
847-742-0001 | 
Josh Austin
Hampshire
847-683-2100 |
| 
Donna Tonovitz
St. Charles
630-549-7694 | 
Sherry Lochen
Elgin
847-742-0001 | 
Dan Cooper
Sugar Grove
630-466-9600 |
| 
Orazio Difruscolo
St. Charles
630-549-7696 | 
Bob Riedel
West Dundee
847-428-5434 | 
Ted Schuster
Sugar Grove
630-466-9600 |
| 
Bob Kearns
S. Elgin
847-888-3200 | 
Gary Bolger
West Dundee
847-531-6110 | 
Sonny Ellen
Sugar Grove
630-466-9600 |
| 
David Murray
Montgomery
630-897-2364 | | |

Auto, home and business insurance policies issued by COUNTRY Mutual Insurance Company®, COUNTRY Preferred Insurance Company® and COUNTRY Casualty Insurance Company®. Life insurance policies issued by COUNTRY Life Insurance Company® and COUNTRY Investors Life Assurance Company®. Fixed annuities issued by COUNTRY Investors Life Assurance Company®. All issuing companies located in Bloomington, IL.

DONALD J. FEE, DDS
FAMILY DENTAL CARE

26 W. CROSS ST. SUGAR GROVE DONALDFEEDDS.COM
630-466-4511



Farm Facts @ Fun

Compiled by Suzi Myers



Pollination results when the pollen from the male part of the flower (stamen) is moved to the female part of the same or another flower (stigma) and fertilizes it, resulting in the production of fruits and seeds. Some flowers rely on the wind to move pollen, while others rely on animals to move pollen.

Animals visit flowers in search of food and sometimes even mates, shelter and nest-building materials. Some animals, such as many bees, intentionally collect pollen, while others, such as many butterflies and birds, move pollen incidentally because the pollen sticks on their body while they are collecting nectar from the flowers. All of these animals are considered pollinators.

What is a Pollinator?

A pollinator is an animal that causes plants to make fruit or seeds. They do this by moving pollen from one part of the flower of a plant to another part. This pollen then fertilizes the plant. Only fertilized plants can make fruit and/or seeds, and

without them, the plants cannot reproduce.

Types of Pollinators

Bees share the job of pollinating. Some plants are pollinated by other animals, wind or water. Plant flowers have adapted to the different pollinators.

Birds – Some birds, especially hummingbirds, pollinate plants. The plants that attract birds are generally brightly coloured, with red, orange or yellow flowers, but are often odorless, since birds have a poor sense of smell. The flowers are often long and tubular, with lots of nectar, and are sturdy enough for perching on.

Other Animals – Many animals that pollinate plants, such as bats, are nocturnal, meaning “active at night,” and so the flowers that need to attract them often have a strong smell, but may not be too colourful.

Wind – The wind pollinates many plants. Usually they have less colorful, unscented flowers and do not produce nectar. The stamens and pistils of these

plants are often long. Their pollen is usually lighter in weight than other plant pollen. The wind carries the pollen from one plant to another.

Water – A small number of plants, particularly those in rivers and streams, are pollinated by water.

Why Pollinators are important

Pollinators, such as most bees and some birds, bats, and other insects, play a crucial role in flowering plant reproduction and in the production of most fruits and vegetables.

Examples of crops that are pollinated include apples,

squash, and almonds. Without the assistance of pollinators, most plants cannot produce fruits and seeds. The fruits and seeds of flowering plants are an important food source for people and wildlife. Some of the seeds that are not eaten will eventually produce new plants, helping to maintain the plant population.

Pollinator preferences

Bees – Yellow, blue, purple flowers; there are hundreds of types of bees that come in a variety of sizes and have a range of flower preferences;

Butterflies – Red, orange, yellow, pink, blue; they need to land before feeding, so like flat-topped clusters (e.g., zinnias, calendulas, butterfly weeds) in a sunny location;

Moths – Light-colored flowers that open at dusk (e.g., evening

primroses);

Beetles – White or dull-colored, fragrant flowers since they can't see colors (e.g., potatoes, roses);

Bats – Large, light-colored, night-blooming flowers with strong fruity odor (e.g., many cactus flowers); bats don't see well, but have a keen sense of smell;

Flies – Green, white, cream flowers; many like simple bowl-

shaped flowers or clusters;

Carion-eating flies – Maroon, brown flowers with foul odors (e.g., wild ginger);

Hummingbirds – Red, orange, purple/red tubular flowers with lots of nectar, since they live exclusively on flowers (e.g., sages, fuschias, honeysuckles, nasturtiums, columbines, jewel-weeds, bee balms); no landing areas needed since they hover while feeding;

Ants – Although ants like pollen and nectar, they aren't good pollinators, so many flowers have sticky hairs or other mechanisms to keep them out.

Create a habitat for pollinators

- Habitat opportunities abound on every landscape – from window boxes to acres of farms to corporate campuses to utility and roadside corridors – every site can be habitat.
- Utilize plants native to your area (or at the least, non-invasive for your area).
- Know your soil type and select appropriate plant material.
- Plant in clusters to create a “target” for pollinators to find.
- Plant for continuous bloom throughout the growing season from spring to fall.
- Select a site that is removed from wind, has at least partial sun, and can provide water.

- Allow material from dead branches and logs remain as nesting sites; reduce mulch to allow patches of bare ground for ground-nesting bees to utilize; consider installing wood nesting blocks for wood-nesting natives.
- Reduce or eliminate the impact of pesticides.

Jokes:

*What did the queen bee say to the naughty bee?
Bee-hive yourself!*
*What did the bees do after they got married?
They went on a honeymoon.*

Butterfly snack packs

Spray paint clip clothespins. Let dry. Add 2 goggle eyes. Twist 2 pipe cleaners together or simply use one to bend into a U-shape with ends also bent to make antennae.

Put snack into a Ziploc® snack bag. Clip the painted clothespin in the middle of bag, catching the pipe cleaner antenna as you close the pin.



Congratulations

Jennifer Orland of Aurora! Her name was chosen from the entries received for correctly completing last month's Word Search Puzzle. For her participation, she receives a box of Inboden's Pub Burgers! Thank you, Jennifer for reading the *Kane County Farmer* and continue to watch each month for more great opportunities from the Kane County Farm Bureau.

Pollen perspective

Have your child look at different flowers in the garden or on plants in the house. Have them look closely to see if they can find the pollen in the flower. They could even touch the pollen with their fingers to see if the pollen comes off on their fingers.

An easy way to show children how pollen gets transferred from flower to flower is to put a piece of wrapped candy in a bowl. Then top the bowl with some Doritos or cheesy corn puffs. Have your child reach for the candy. As the child reaches for the candy, some of the cheesy powder will come off on their hand. Once they have gotten the candy, have them wipe their hand off onto a paper towel. They will see the residue from the chips on the towel. This is how the process of pollination happens; the pollen is carried from one source to another.

June is...

- Aquarium Month
- Candy Month
- Dairy Month
- National Gardening Week – First full week of month
- National Adopt a Cat Month
- National Fresh Fruit and Vegetables Month
- Rose Month
- Turkey Lovers Month

June 19-25, 2017 has been designated **National Pollinator Week** by the U.S. Department of Agriculture and the U.S. Department of the Interior.

- 6 D-Day, WWII
- 14 Flag Day
- 18 Father's Day – third Sunday
- 18 International Picnic Day
- 20 Summer Solstice
- 27 Orange Blossom Day

Pollination

N R O L O C D X P Q H R W R Z V D B P E
 T O M A M M A L S O O V E J F E E T O V
 H I I V X A Z N E D L F J R E E N I L I
 H V Y T Y L F Y E M S L R S T D Q U L T
 W B E E A G A N T N O U E L P U H R I A
 A T V X Q N T R A R M I E N U Z V F N N
 T J G F R O I R E E Y P M R E N Y P A T
 E Y N R G L T L L W K F K B O C W D T Z
 R C F L L L W Y L Y O P C N D S V N O C
 F G N L S H C P L O W L N E J T K W R L
 K E E Z T L S J W F P H F V K X Z L S A
 V M P D A O R N V B R R A T C E N X A H
 S H R T B C H T A P E E D Z S F F P N W
 B I Y Y D J N V Q M X R T L N Y P X M X
 B Y F O W H U D A F X K P T P W J K H M
 R H O N K L R O Z P P V N L U B V N K L
 Y F L F W L U O F X L W Z X B B N H T I
 O Z J A S Y K S D Q I X U L L H I D Q H
 A Z S H R U D R F N I I D E X K P X P D
 L P S K D G C B D F E Z Q X F P S E D C

- | | | | | |
|-----------|--------|---------|-------------|----------|
| BATS | COLOR | LEMUR | POLLINATION | TRANSFER |
| BEE | FLOWER | MAMMALS | POLLINATOR | WASP |
| BEETLE | FLY | NATIVE | RODENT | WATER |
| BIRD | FOOD | NECTAR | SEED | WIND |
| BUTTERFLY | FRUIT | POLLEN | SMELL | |

Name _____
 Address _____
 City _____ State _____ Zip _____
 Telephone (____) _____ Email _____ Age _____

Return to: Kane County Farm Bureau, 2N710 Randall Road, St Charles, IL 60174 by June 15, 2017 to be entered in our drawing for a Pollinator-themed prize.

A Women's Committee 'farewell'

Without a search of the archives at the Regional History Center at NIU, no one knows for certain when the Women's Committee of the Kane County Farm Bureau first organized. (NIU archives have copies of the Kane County Farmer, first published in 1922, dating back to 1952.)

A brief, 76-page history of the KCFB, published for its Centennial celebration in 2013, focused primarily on a decade-by-decade review of the organization, its affiliates and its role in public policy, community service, education and leadership development. The first mention of the Women's Committee comes from a snippet in that history. "Violet Anderson of Batavia and Edith Phelps of Elburn attended the IFB Women's Committee conference in April 1965 in Peoria, where they learned about topics including leadership and legislative involvement."

What we do have in the KCFB office in St Charles are scrapbooks, dating back to 1973, of Women's Committee activities on an annual basis. These scrapbooks give a glimpse of the activities of this volunteer committee that formed the backbone of Farm Bureau's public relations, market promotion, health, safety, community service and educational efforts for many, many years. In fact, some of our most popular programs today are an outgrowth of the Women's

Committee's focus on education and Agriculture in the Classroom programs, begun in earnest in the 1970's.

Now, with changes in society, membership demographics, Farm Bureau committees, the associations' gov-

August 2 Luncheon to celebrate a half-century plus of volunteer service.



This 1965 Kane County Fair scene is a prime example of the Women's Committee promotional efforts on behalf of the Farm Bureau and its affiliated companies of that era: Kane County Service Company (now Conserv FS) and Country Companies Insurance Group (now COUNTRY Financial).

ernance structure and most recently, membership classifications, the committee will hold its last meeting on June 14 – and use it to plan a "Farewell and Appreciation Luncheon" for ALL current and former committee members and their spouses/guests.

Current committee members have combed through the remaining records at the Farm Bureau in an effort to identify past committee members and volunteers – but that is a big task, and one that is sure to omit, albeit accidentally, someone from receiving an invitation in the mail to the August 2 "Farewell." So this stands in its stead.

To all those who have served the Kane County Farm Bureau in the role of planning, organizing or carrying out a Women's Committee sponsored activity, at any time over the last half century, we invite you and your spouse/guest to

join us for a Farewell Luncheon, reminiscing and in remembrance of things past on Wednesday, August 2 at noon at the Fireside Grille in Sugar Grove.

Two dozen scrapbooks of Women's Committee activities,

spanning 1973 to the turn of the Century, will be available for viewing and sharing. There is no charge for Committee members from any era and their spouse/guest to attend. RSVP's are required and can be made by calling 630 584-8660.

Women's Corner

By Louise Johnson
Women's Committee Chair



Welcome to summer!

While you are on vacation this summer, you may want to do the following: freeze a cup of water and after it is frozen, put a coin on top of the ice and lid the container. When you return from vacation, check the coin. If the coin is at the bottom, your freezer lost power and food thawed. Discard food! If the coin is partially submerged, you lost power for a while and some food may be salvagable.

Families own 98% of America's farms. I am sure you have heard the derogatory term, "factory farm." However, unlike some negativists would have you believe, almost all of the farms in the U.S. are owned by

families, not governments agencies, not world investors, and not other big, non-farming entities.

Check out the flags at the Farm Bureau! Both the American and the state flags were recently dry cleaned. They look wonderful! Here is some American flag display trivia:

- An American flag which is on a movable pole should be placed in the 'position of honor' at the clergyman's or speaker's right as he faces the people (so at the audience's left).
- The flag hanging on a wall should have the 'union' or stars at the upper left corner (as seen by a viewer), whether hanging horizontally or vertically. (In other words, the stars

should be on the flag's right.)

- The flag should be displayed only from sunrise to sunset, unless the flag is illuminated during darkness.

If you have a car with a rearview camera and must take a driving test to renew your license, when backing up you must turn your head to look behind your car: you must not just rely on the camera. Otherwise you will be marked down, and may fail your test.

Here is a quick salad for summer.

Cottage Cheese Salad

- 1 3-oz. pkg. orange gelatin
- 1 can pineapple chunks, with juice
- 2 c. cottage cheese

Disolve gelatin in 1 c. boiling water. Stir in cottage cheese and pineapple chunks and juice. (no cold water) Refrigerate. Stir, when it starts to thicken.

Alternate instructions, without fruit: use lime jello, hot water, 1 cup cold water, and cottage cheese.

Thanks to our donors...

Our FOUNDATION is dedicated to providing agriculture based education for the next generation, and to meeting the challenge of providing food for a hungry planet. We look forward to continuing support for scholarships, along with local classrooms and teachers, leadership training, and community youth education through grants to local FFA Chapters and 4-H.



The KCFB FOUNDATION offers its sincere appreciation to the following for their contributions. Names shown are pledges received from April 20 through May 20.

- AGCO Parts Division, Batavia employees
- Ken Gustafson
- AGCO Parts & AGCO Global Women's Network Scholarships, KCFB Foundation
- KCFB Foundation Scholarship Fund (a portion of the Winner's Choice Tractor Raffle winnings)

Through Harvest for ALL, KCFB members have contributed the equivalent of nearly 1.75 million meals to local food pantries.

- | | |
|--------------|--|
| Donor | Beneficiary |
| Mike Kenyon | Food for Greater Elgin & South Elgin Food Pantry |



Master Gardener Help Desk open

Have questions about plants or gardening? Contact the University of Illinois Extension Master Gardener Help Desk in Kane County. The Help Desk is open Monday through Friday from 10am to 2 pm through September. Call 630-584-6166, email uiemg-kane@illinois.edu, or visit the Master Gardener office at the University of Illinois Extension office at 535 S. Randall Road in St. Charles. For more information, visit the website at <http://web.extension.illinois.edu/dkk/kanemg/>.

CONNECT WITH US



Your Farm Bureau membership means Value



Recycle Scrap for CASH

Steel, Copper, Aluminum & Cars

Trucking & Dumpster Service Available

"Helping to keep America Picked up for 45 years"

Zimmerman Recycling, Inc.
301 Industrial Drive, DeKalb
(815) 756.8600



Water Softeners
Iron & Sulphur Filters
Drinking Water Systems
Sales-Rentals-Service
All Makes

Kane County Farm Bureau members receive 10% discount on all service work.



FACTORY DIRECT PRICES

◆◆◆◆ NO FIX - NO CHARGE ◆◆◆◆



630-584-5559



www.johnsonwater.com

Always Searching for the Potential

By Kristi Van Oost



“What you see depends on how you view the world. To most people, dirt is just dirt. To a farmer, it’s potential.”

—Doe Zantamata

When I was younger, I loved spending summer days running around the neighborhood with my best friend Molly. We spent countless hours riding our bikes on the local trails, and always ended our day at our “secret” spot in a field just off one of the trails. We would lie on our backs and watch the clouds float across the mid-day sky. She would always tell me how that cloud looked like a horse or how the next one looked like a car.

Try as I might, I was never able to see the same cloud shapes she could. Instead of a horse or a car, I would see a dog and a tree. I was always sad that I could never see the same shapes as Molly, and would sometimes pretend I saw her shapes instead of telling her she was wrong.

It took some time for my young self to realize we saw different shapes because of how we were looking at the clouds and that neither shape was wrong or right.

It is no surprise that everyone

has a different view of the world, as no two people are exactly the same. Where I see a blank canvas, someone else might see a beautiful painting. That is why broken things become invaluable, old clothes remain in boxes in the basement and people keep old cars until they stop moving. While these things themselves hold little tangible value, they mean the world to the people who own them.

When most people look at an empty field, they might see some pretty wildflowers or a waste of space or that new shopping center the city was thinking about building...but when a farmer looks at an empty field all they see is potential. The farmer sees the different crops they could plant on that soil or how many cows can graze the grass or the yield a harvest could produce.

In general, I think looking for the potential in everything is a great way to go through life. That could mean putting yourself in someone else’s shoes or simply trying to repurpose an old piece of furniture. Just remember, it’s okay if what you see is different than what someone else sees.

What’s new in the COUNTRY agencies?

St. Charles Agency, Bob Effner, Agency Manager

BOB KEARNS has been named the Financial Representative of the Month for April 2017 in the St. Charles/Elgin Agency, as announced by Agency Manager, Robert J. Effner, Sr., CLF®, LUTCF. Bob has provided tangible plans for addressing the immediate and long term insurance and financial security needs of his clients through COUNTRY Financial®’s diverse products and

services. Let Bob’s expertise help you! Bob’s NEW ADDRESS is 36W930 Bowes Rd., Elgin, 60124. Phone and fax remain the same, (P) 847-888-3200 (F) 847-888-3208. You may also reach him via email, robert.kearns@countryfinancial. Congratulations, Bob!

Aurora Agency, Kevin Gomes, Agency Manager

Zach Fox, Financial Representative with the Aurora Agency, is our Financial

Representative of the Month for April, 2017. Zach began his career with COUNTRY Financial in May of 2007 and services clients out of his office located at: 1920 Wilson Street, Batavia, 60510. (630) 406-6900

Zach’s professionalism and vast knowledge of auto, home, life, commercial and financial products make him a great person to do business with. Congratulations, Zach!

AFBF opinion

(continued from page 3)

power to regulate.

This was hardly an isolated incident. After the Government Accountability Office found that EPA violated the law by engaging in covert propaganda in support of the Waters of the U.S. rule, the agency had a similar reaction. “We will pay attention to what the GAO has said,” former EPA Administrator Gina McCarthy told the House Agriculture Committee. “We just disagree that it was a problem.”

In the WOTUS rule, EPA also misread the Supreme Court ruling in Rapanos. The agency stretched the statutory language of the Clean Water Act and ignored the vital role Congress reserved in law for states to protect our waters. Is it any wonder that more than 30 states sued the agency?

The EPA is by no means the lone wolf in this regulatory spectacle.

Several years ago, when the Labor Department proposed changing regulations governing

child labor in agriculture, it came to light that the department’s own handbook, available publicly on its website, contradicted its own proposal.

Similarly, for years the U.S. Forest Service has dogged federal permit holders to share or hand over private water rights to the federal government. Such intimidation not only threatens to compromise owners’ lawful state property rights, but also contradicts a U.S. Supreme Court decision upholding those rights.

Against this backdrop, late last year the American Farm Bureau Federation and 52 other agricultural organizations asked Congress to work in a bipartisan fashion to reform the rulemaking process. We laid out our rallying principles – more transparency, the use of sound science, accountability in agencies’ use of economic and supporting data and a level playing field for all stakeholders – in a white paper that can be found at bit.ly/AFBRegReform.

However, first and foremost, we want regulatory reform to be bipartisan.

Over the last four decades, presidents from both parties – Carter, Reagan, Clinton and Obama – have issued executive orders establishing how agencies should conduct rulemaking. Costs, benefits, transparency and federalism all figured prominently in efforts to fix an increasingly unaccountable bureaucracy. Articulated by presidents of such differing viewpoints as Ronald Reagan and Barack Obama, the orders signal bipartisan recognition of a serious problem.

A regulatory process that is fair, open and transparent for all will better protect our environment, our safety and our public health. Reform also will strengthen the American principle as espoused by another president, John Adams, that the United States is a nation of laws rather than men – or in today’s case, rather than a nation of overzealous regulators who shrug off the law.

Zippy Duvall, a cattle and poultry farmer from Georgia, is president of the American Farm Bureau Federation.

Renewing Farm Bureau membership is now even easier – online

The Illinois Farm Bureau provides many services to all Kane County Farm Bureau members. Renewing your membership online is another service they offer through their website. Did you know that you can renew your Farm Bureau membership, view payment history, print a lost membership card, and update account information including address, spouse/dependents,

phone online all through the Member Center of the website? To do this, simply visit www.ilfb.org. Click on the Get Involved menu, and then Membership Benefits. You will then be asked to register using your Farm Bureau number and create a website username and password. The ability to check your membership information anytime online can help prevent

unwanted Farm Bureau membership late fees, and avoid loss of COUNTRY insurance coverage.

Recruiter of the Month

Each month we honor the person who signs the most members into our organization. This month, the honor goes to **Felipe Rocha**! Felipe has been a COUNTRY Financial Representative since August of 2011. His office is located at 541 N. Lake Street, Aurora. As a token of our appreciation, Felipe receives two tickets to Charlestowne Movie Theater. Thank you for your continued support of the Kane County Farm Bureau and congratulations on your success!



Felipe Rocha

Savor summer with great grillin’ meats
See page 1 to order delicious

CLASSIFIED ADS

CLASSIFIED AD RATES

Classified advertising rates: 20 cents per word/\$20 minimum (60 words or less). DISCOUNTS for members: Associate members, 20%; Voting members, 30%; PLUS members, 40%. Advance payment requested. Ads due by the 15th of every month for the next issue. No advertising (classified or display) for financial or insurance services will be accepted. Call 630-584-8660.

SERVICES

Jim Verhaeghe & Sons, Inc. – Tree removal, tree trimming, & stump grinding. Backhoe work & Tile Lines. Fully insured – Free Estimates – Jim Verhaeghe Sr. Call: 847 334 5730


WANTED

Want to buy vintage & used tools Call Chris – Also, we do cleanouts. Call: 630 550 7182

ENTRY LEVEL POSITION, 30-35 HOURS WEEKLY. MUST BE A SELF-STARTER & TEAM PLAYER. APPLICANTS SHOULD BE COMPUTER LITERATE WITH PLEASANT PHONE VOICE & MANNER. SOME OVERNIGHT TRAVEL REQUIRED. OFFICE IS LOCATED IN ST.CHARLES, EAST SIDE. CALL BOB TO DISCUSS POSITION. Call: 630 377 5807

FOR SALE







4 HAY WAGONS, VGC, STORED INSIDE DURING WINTER MONTHS, \$1,500 EACH. Call: 847 464 5522



2nd Location in Wasco

40W296 Wasco Rd. Wasco, IL
2N492 Kirk Rd. St Charles, IL
630-584-2024

**Locally Owned & Operated
Feed Store where everyone
is treated like family**

KCFB Foundation seeking handcrafted donations

Got a knack for woodworking, painting, welding etc.? Consider showing off your artistic skills by donating a one of a kind creation to the Kane County Farm Bureau Raffle and Silent Auction at the Kane County Fair. All items donated are displayed in the KCFB barn through the Kane County Fair, which attracts hundreds of fairgoers daily. It is the perfect way to support the future of farms and food while showing off your artistic skills.

All proceeds raised by this raffle and silent auction go

towards KCFB Foundation's effort to increase local scholarships and Ag-in-the-Classroom activities. For 2017, the Foundation awarded over \$14,000 in scholarships for college students pursuing careers in agriculture.

If you are interested in providing support for this year's bucket raffle and silent auction, or you know of a business or individual that might have an interest donating, please contact the

KCFB office at (630) 584-8660 or feel free to stop by our office with your item(s)!



This Amish-made rocking cow, donated by Dave Klussendorf of Batavia, was auctioned off in the 2015 Silent Auction. Handcrafted pieces like this make great donations and help support Agriculture Education. Interested in showing off your artistic skills? Stop by the Farm Bureau with your donation or call the office at (630) 584-8660 for more information.

New membership class available

The Kane County Farm Bureau® recently took action to approve a bylaw change that provides for a new classification of member, the Professional Member (PM). The PM classification is for individuals who are employed in farm agriculture, farm and food related occupations but do not directly earn their income from farming.

Professional Members will have voting rights in the association, be eligible to serve on the local Board of Directors, and can represent Farm Bureau as a delegate at the state annual meeting. Professional Members are those with a passion for agriculture and farming who seek a strong role for the industry in the Kane

County area. As an added benefit of Professional Membership, those who seek re-classification to this new membership class will also receive a weekly subscription to FarmWeek, Illinois Farm Bureaus' award winning weekly publication of farm news, markets, weather, policy and marketing advice.

With the adoption of this new membership classification, the KCFB features three main membership classifications:

- **MM (Farmer Member)** – for individuals that are farming and earned \$2,500 or more Annually
- **PM (Professional Member)** – for individuals that are employed in the field of agri-

culture

- **A (Associate Member)** – for individuals seeking to support the efforts of the Farm Bureau and to access the benefits and services offered through the organization.

The Kane County Farm Bureau would like to encourage any Associate Member who is employed in an agriculture related field and has a strong interest in the future of agriculture to consider applying for the Professional Membership classification. Please contact the Member Service Center at the Kane County Farm Bureau at 630-584-8660 or email us at member@kanecfb.com for more information.

Thompson receives a portion of IAA Foundation scholarship awards

Illinois and other Midwestern students will have help paying for college tuition during the 2017-2018 school year, courtesy of scholarships awarded by the IAA Foundation. Recently the Foundation, the charitable arm of the Illinois Farm Bureau, awarded \$143,300 to 70 students pursuing degrees in agriculture-related fields, based on their academic ability, leadership involvement, professional career goals and financial need.

Among those students was Susie Thompson of Maple Park, an Illinois State University student enrolled in Agriculture Communications and Leadership curriculum. Thompson, a former Illinois Association FFA office, Kane County Farm Bureau summer intern and KCFB Foundation scholarship recipient was awarded the IAA Foundations Collegiate Farm Bureau Scholarship for the 2017-18 school year. She is the daughter of Michael & Jennifer Thompson.

"We are pleased to invest in these bright young minds and are confident they represent a strong future for agriculture here in Illinois," said Susan Moore, director, IAA Foundation. Scholarships presented by the IAA Foundation range in value from \$1,000 to \$7,500. A full listing of recipients can be found at www.iaafoundation.org

Annually, the Illinois Farm Bureau and county Farm Bureaus award close to \$800,000 in scholarship support. The IAA Foundation has awarded more than 1,000 scholarships since 1989.

"We seek to expand our scholarship program each year in order to support more students as they pursue careers in agriculture," Moore said. "Through the help of generous gifts from farm families, commodity groups, agribusiness, Illinois Farm Bureau members, and others who support our industry, we've been able to do just that."

Applications for the 2018-2019 school year will be available December 1.



Susie Thompson

Training

(continued from page 1) play in future training drills" said Hanson.

The Kane County Farm Bureau has always been a strong advocate of farm safety, and has various resources available at the office which educators, farmers, and public safety

officials alike are welcome to utilize. For more information about training videos, safety equipment or rescue equipment available please contact the Kane County Farm Bureau office at (630) 584-8660. Be sure to check out AGCO's GSI grain bin display at the Kane County Farm Bureau barn at the Kane County Fair, July 20-24.

Stop by and see us at the Kane County Fair

Farm Bureau returns to the Kane County Fair (July 20-23) with its traditional information services and activities including a Farm Zoo, Bucket Raffles, Silent Auction and Kids Scavenger Hunt. For 2017 we've added a couple of new twists:

Christmas shopping in July!

Do you wait until December to purchase your Christmas gifts? Get ahead of the game by shopping for Christmas in July! Give yourself something to look forward to the whole month of December, with a ticket for the "31 Days of Christmas" raffle. There's a prize from Cabela's valued from \$200-\$499 available each day.

Win by exactly matching the evening Pick 3 Illinois Lottery number for that day. Prizes include a wide variety of outdoor favorites including a kayak, canoe, golf clubs, hunting and camping gear, and much more! Winners receive a Cabela's gift card in the exact value of the prize. So, if the prize you win isn't just right for you, choose something more appropriate (up to the value of your prize) from Cabela's wide selection of merchandise.

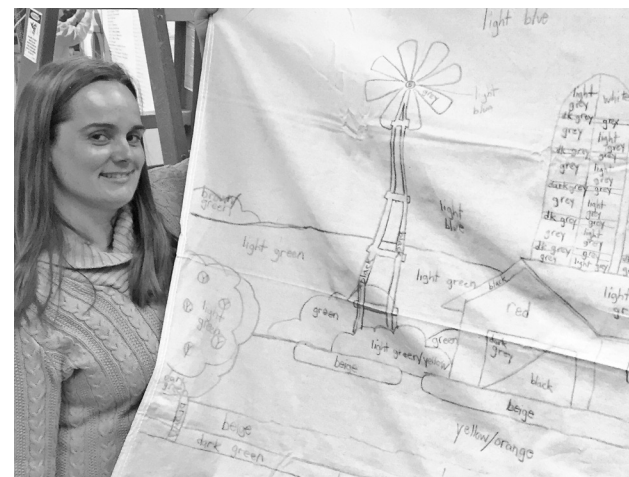
Proceeds benefit KCFB Foundation, which provides college scholarships and Agriculture in the Classroom programs for local schools. Tickets are \$20 and will be available the week of the Kane County Fair. Visit www.kanecfb.com for more details.

Paint & Sip, part deux – Paint & ... Ice Cream?

Our March Touch-A-Tractor Paint & Sip party was such a success that we're bringing it back for the Kane County Fair. Join us Friday, July 21 from 5-7 at the Farm Bureau building on the Kane County Fairgrounds as we paint scenes on another BIG canvas to use as a "peek board" for the County Fair, Touch-A-Tractor and other community events. (A peek board is a photo or canvas with a cut out for kids and adults to poke their head through for pictures.)

Since we can't provide adult beverages for our guests, we will substitute ice cream cones from the Kane County 4-H Foundation booth next door for all who stop by to help us paint. Like last time, no experience is necessary. And if you need something more substantial than ice cream to muster the self-confidence to put brush to canvas, you can stroll down to the beer garden 200' away, for some live music and liquid courage.

As for the theme, we're open to suggestions. Obviously, we want it to remain agricultural, but should it be influenced by Art (American Gothic), Movies (Twister), Children's books (Charlotte's Web)? We're open to your suggestions. Call the Farm Bureau office with your theme or scene recommendations and we'll run them by our resident artist, staff member Valerie Johnson, who will create the life size, paint-by-number like canvas that we will use at the county fair. We hope to see you there.



Val Johnson with a "paint-by-number" farm scene canvas from the Touch-A-Tractor Paint & Sip party. KCFB is seeking "theme" suggestions for canvases to be painted at the Kane County Fair. Call 630-584-8660 with your suggestion.

The times, they are a changin

Interested in getting more information on upcoming Kane County Farm Bureau events, membership benefits, Farm Bureau news, volunteer opportunities, etc. from Farm Bureau and other local sources? Give us your email address and we will add you to our list of other members interested in being kept up to date on all the latest happenings within the organization.

As an incentive, Farm Bureau members who send in their email address will be entered into a drawing for a \$25 Grocery Certificate card to Meijer. To enter, fill out the form below and mail it back to the KCFB office prior to August 24th.

Return to: Kane County Farm Bureau, 2N710 Randall Rd, St. Charles, IL 60174 by August 24th

Member Name: _____ Email Address: _____

Fill It In and Win!

Please participate in a short five-question member survey.



Fill It In A Chance To Win \$100 VISA Gift Card! A Stronger Organization Better Together!



Go to www.ilfb.org/fillitinandwin and complete the survey.

You'll need your membership number. Can't find it?

We can help, call IFB at 309-557-2689 or Kane County Farm Bureau at 630-584-8660.

Kane County Farm Bureau is asking members to Fill It In and Win! Fill in the survey for a chance to win a \$100 VISA Gift Card.

Fill It In and Win!

