

Kane County Farmer



**KANE COUNTY
FARM BUREAU®**
Farm. Family. Food.™

Enhance the quality of life for member families;
Promote agriculture, farms & food; and,
Advocate good stewardship of our land and resources.

VOL. 83 NO. 5 MAY 2018

KCFB FOUNDATION announces 24 scholars

The Kane County Farm Bureau FOUNDATION will award over \$27,000 in college scholarships this year to 24 future Ag industry professionals.

"This year we had one of our best candidate pools ever, for our scholarships" said FOUNDATION Vice President Wayne Schneider. "We at Farm Bureau are certainly proud of the number of students who plan on going into agriculture related careers. Our county will be well represented in the future!"

As a not-for-profit entity, the FOUNDATION solicits and distributes private funding for scholarship, education and leadership training, Ag-in-the-Classroom programs, Ag Literacy, charitable activities and research. The FOUNDATION was established in 1989 by the Kane County Farm Bureau to carry out charitable work in the advancement of agricultural literacy and preparing students for careers in the agriculture industry. In its history, it has awarded hundreds of thousands of dollars in college scholarships and internships.

KCFB FOUNDATION scholars were recognized at a ceremony at the conclusion of Touch-A-Tractor in April at Kane County Farm Bureau. The FOUNDATION Board extends congratulations to these young leaders of tomorrow and best wishes in their academic pursuits.

The 14 Students listed in the box above received \$1,000 KCFB FOUNDATION General Scholarships. Their bios will be included in the June *Kane County Farmer*. Ten additional recipients of KCFB Foundation Memorial and Endowed Scholarships are featured in this issue of the *Kane County Farmer*.

Photos, top to bottom:

KCFB FOUNDATION scholars assembled at a ceremony concluding the 2018 Touch-A-Tractor event at Kane County Farm Bureau on April 8. Although many recipients are away at school and weren't able to attend, 12 scholars were present for the ceremony as well as many parents. Pictured from left to right, back row: Alex Turk, Jake Thompson, Jackson Kettelkamp, Andrew Gould, Catherine Gorenz and Brandon Griffith. Front row: Anastasia Kurth, Jessica Bowgren, Sarah Carr, Elena Chapa, Catherine Austin, and Heidi Smith.

This year AGCO employees donated enough money for 5 agriculture related scholarships. Two (2) \$1,000 scholarships were given by AGCO Parts Division, two (2) \$1,000 scholarships were given by AGCO Global Women's Network, and one (1) newly created \$2,500 AGCO Parts Platinum Scholarship.

Pictured from left to right: Joshua Converse, Bill Smith, Belinda Meyer and Laurie Cantu of AGCO; Heidi Smith and Catherine Austin, scholarship recipients; Michael Thompson, father of Susie Thompson; Andrea Achermann, Franky Achermann and Nikolay Achermann of AGCO.



KCFB FOUNDATION 2018 scholarship recipients

Elena Chapa	Jackson Kettelkamp
Anastasia Kurth	Catherine Gorenz
Vanessa Gould	Jake Thompson
Sarah Carr	Monica Zimmerman
Jessica Bowgren	Bradley Gorenz
Kylie Lindley-Bohman	Brandon Griffith
Allison Wetsch	Alexander Turk

Calling all teachers – Register for KCFB's Summer Ag Institutes

Once again, Kane County Farm Bureau has two exciting and educational tours planned for area teachers this summer. This is an excellent opportunity to earn college graduate credits from St. Francis University, as well as gather lots of lessons to take back to the classroom. Learn through hands-on experiences and meet farmers for first-hand knowledge of today's agricultural best practices.

Summer Ag Institute I is scheduled for 6 days: June 12-14 as well as June 19-21, earning 3 graduate credits or 45 continuing education hours.

Our very popular summer class is a 6 day long look at the many different facets of agriculture in Kane County. This is your chance to tour local farms, have time to speak with individual farmers, tour agri-businesses, see how agriculture affects

your daily life, and network with other teachers. Discuss and become knowledgeable about GMO's, sustainability, organic practices, and other hot topics. **Summer Ag Institute II is scheduled for July 10-13 and focuses on the Illinois Bicentennial and its agricultural connections, earning 2 graduate credits or 30 continuing education hours.**

A 4-day event focusing on the Illinois Bicentennial and its agricultural connections is being offered this summer to graduates of any year's SAI I class. This is your chance to learn more about historical aspects of agriculture and the affect it had on our state. Possible sites include historical agricultural sites, historical processing and production of agricultural commodities.

Please contact Suzi Myers at

aitc@kanecfb.com or 630-584-8660 for more information about the Summer Ag Institutes or to register.



Kane County Farm Bureau's Summer Ag Institutes are an excellent opportunity for teachers to learn about many aspects of agriculture and obtain ideas and lessons to take back to their students, after all, it all starts in the classroom, just like this picture depicts. Teachers then take tours of working farms and learn about agriculture directly from farmers. There are two institutes offered – the first is open to anyone, and the second is open to graduates of the first class.

PEDAL TRACTOR DRAWING



5-year old Liam Sickafoose of St. Charles was this year's winner in the Kane County Farm Bureau FOUNDATION's Pedal Tractor Drawing at Touch-A-Tractor. His choice was between a red Cockshut 70 and a green Ferguson – for him, it was an easy choice: the Ferguson. We were able to slow Liam down long enough to get a shot of him and his mom, Nicole.

See more T-A-T photos on page 8.

DATES TO REMEMBER

May

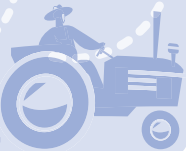
May 10
Board of Directors, 7:30pm
Farmer Training, Henry Co. FB

May 11
Farmer Training, Champaign Co. FB

May 22
Kane County Board
Ag Committee, 10am,
County Admin Bldg

May 28
Memorial Day – Office Closed

Corn and
soybeans
coming soon!



May Featured Product Steakhouse Boneless Pork Chops

This month we're offering special steakhouse boneless marinated pork chops! Each box comes with 8 sealed 8 oz. chops to a box. These special Smokehouse Pork Chops are marinated in a balsamic reduction with mustard seed and just a hint of onion. They are a very popular, high quality meat ready for your grill. The prices for the Smokehouse Boneless Marinated Pork Chops are \$24.00 for PLUS members, \$25.00 for members, and \$28.00 for non-members. These special pork chops are available while supplies last for the month of May at the Kane County Farm Bureau, Randall Rd and Oak Street in St. Charles.

KCFB Board meeting review–April

The April meeting of the Kane County Farm Bureau Board of Directors was called to order at 7:00 pm on April 5, 2018, with board members reciting the Mission Statement. The regular board meeting was preceded by Touch-A-Tractor set-up at 4 pm, dinner for volunteers and meeting attendees, provided by the Kane County Farm Bureau and grilled by Dale Pitstick, board member, and the Annual Meeting at 6:30pm.

The minutes from March 1, 2018 board meeting and the membership report from March 31, 2018, were approved on the consent agenda as well as the financial reports received and filed from March 31, 2018. Other items approved were MCC Technology installing hardware and software, (2) 360* Notebooks, (3) desktops; (6) 4-H Trophies purchased for \$25/each; and a 2019 Extension contract.

Reports and informational items included a March 2 Institute for Teachers at KCFB and March 26 New Teachers at Aurora University (circulated in AITC Report); March 13 IFB Health Care Summit report from Mark Tuttle, DeKalb CFB President and District 1 represen-

tative; March 14, 15 Governmental Affairs Leadership Conference report from White, stating that Legislator attendance was down, but Governor Rauner did address the general session; March 21, 22 Ag Days; March 13 the NCRS inspected the NLRs Grant Wood Chip Bioreactor site; and the Kane County Farm Bureau will coordinate in cooperation with the Illinois Farm Bureau for the U.S. EPA Region 5 Tour in May.

Local issue reports were given for the Kane County Board/FPD and Kane County Ag Committee; there were no reports for the Farmland Protection Commission, the Regional Planning Commission, and the Stormwater Management Technical Advisory Committee.

B. Collins gave the PR & Membership Report. He informed the board of contributions to the KCFB FOUNDATION during the previous month, which included: Craig & Angela Bradley benefiting Food for Greater Elgin, a Harvest for ALL contribution, along with KCFB FOUNDATION donors Robert Jr. (Jamie) & Julie White of White Farms, Batavia; David & Lynette Werdin of Werdalyn

Farms, Elburn; Glenn & Lorraine Lenschow, Hampshire; and Roger & Margaret Wesemann, Hampshire.

A written Ag-in-the-Classroom report from Suzi Myers was circulated. SPROUTS (Spring Program of Reading & Outreach to Urban Teachers and Students) is scheduled for April 16-20. Summer Ag Institute I (June 12-14) and Sumer Ag Institute II (June 19-21) both currently have 3 registrations. The National AITC Conference is scheduled for June 25-29 in Portland, ME.

White delivered the FOUNDATION report. On March 23, the board met for the Annual Meeting & Scholarship review. This year, 24 scholarships were awarded to students. Touch-A-Tractor is April 6-8 and a sign-up sheet was circulated.

For the Direct Marketers/ Specialty Growers, Lehrer reported that the Bounty of Kane surveys will be mailed late April to update the online directory.

Arnold started his manager's report by introducing Wyatt Williamson, Manager in Training, from Kendall County. He then passed out the new promotional flyer for Professional

Members and new membership application. A PLUS Package meeting report and proposal discussion was given from the March 9 meeting. Kenyon moved to approve the added benefits, Kettelkamp seconded, and the motion carried.

Correspondence, as follows, was circulated: H-BR FFA Alumni – thanks for the Glow-Bowl Fundraiser donation; Living Well Cancer Resource Center – requesting Bridge Walk sponsorship; Northern Illinois Food Bank – thanks for Harvest for ALL contribution dated March 9; Marie Wilkinson Food Pantry – (2) thank you's for the Shopping

Spree donation dated February 9; Ellen Kamps – thanks for IALF program recommendation; and AARP – thanks for hosting the Defensive Driving Class.

The election of officers/ board re-organization followed. The elected officers will not change; Joe White, President; Wayne Schneider, Vice President; and Mike Kenyon, Secretary. Keck, Gehrke, and Bradley will be "at large" Finance Committee representatives.

The next scheduled Kane County Farm Bureau Board of Directors meeting will be held on Thursday, May 10, at 7:30pm.

KANE COUNTY FARM BUREAU BOARD ATTENDANCE JANUARY 2018 THRU DECEMBER 2018

	JAN	FEB	MAR	APR	MAY	JUN	JULY	AUG	SEP	OCT	NOV	DEC
C. BRADLEY	X	X	X	X								
F. CARLSON	X	X	X	X								
B. COLLINS	X	X	X	X								
C. COLLINS	X	X	X	X								
J. ENGEL		X	X	X								
G. GAITSCH		X	X	X								
B. GEHRKE	X		X	X								
W. KECK		X	X	X								
M. KENYON	X	X	X	X								
K. KETTLEKAMP	X	X	X	X								
D. LEHRER	X	X	X	X								
A. LENKAITIS				X								
N. LONG	X	X	X	X								
D. PITSTICK	X	X	X	X								
W. SCHNEIDER	X	X	X	X								
J. WHITE	X	X	X	X								

Gould receives President's Scholarship

The Kane County Farm Bureau FOUNDATION has awarded its \$1,500 President's Scholarship to Andrew Gould. This honor is reserved for the high school senior among this year's applicants with the most outstanding combination of scholastics, activities, goals, and

ACT score. Andrew's parents are Chris and Dana Gould.

Andrew is from Elburn and attends Kaneland High School with plans to attend the University of Illinois Urbana-Champaign, majoring in Technical Systems Management. He has been active in

FFA, 4-H, the DeKalb Area Pork Producers, and has participated in track and field. This is his first year as an officer for Kaneland FFA, serving as the President. A previous recipient of an NROTC scholarship, he has intentions to participate in either the Navy or Army ROTC program while attending UIUC.



Welcome new members

You receive the Kane County Farmer because you are a Farm Bureau member. If you are a farm operator or owner, you benefit from a local, state and national organization committed to agriculture and your way of life.

If you do not have direct ties to farming, your membership helps promote local farms and farming, encourages wise use of our limited natural resources and preserves farmland and our agricultural heritage while allowing you to enjoy COUNTRY insurance and the many benefits of one of Illinois' premier membership organizations.

We appreciate your membership and continued support and we welcome your comments on the content of the Farmer. We encourage you to make recommendations about farm, home, food, natural resources, renewable energy or agricultural heritage and history related topics for inclusion in future issues of the Farmer.

First-ever AGCO Parts Platinum Scholarship

Erin Kettelkamp, daughter of Karl and Julie Kettelkamp, is the first-ever recipient of the AGCO Parts Platinum Scholarship for \$2,500. Newly created this year, this scholarship is awarded to a student who resides in Illinois and who is pursuing higher education in an agriculture related field. The scholarship is funded by the employees of AGCO Parts in Batavia, IL.



Erin Kettelkamp

Club, the Illinois State Veterinary Medical Association, and a Theta Chapter member of Omega Tau Sigma. She is also the Sheep Flock Manager for the Veterinary Medicine Research Farm and is the Vice President of the Illinois Student Chapter of the American Association of Equine Practitioners.

After obtaining a Bachelor's degree in Animal Science and with her anticipated doctorate in Veterinary Medicine, Erin's primary goal is to begin practice for large or mixed animal medicine. She would also like to be a part of the production management systems industry to promote the ways in which animal agriculture works with the USDA to produce safe and ethical food sources.

Kettelkamp, a 2013 graduate of Kaneland High School, and currently a Freshman at the University of Illinois College of Veterinary Medicine after attending UIC ACES, is majoring in Animal Science. In college, she has been involved in many different organizations and groups. Erin is a member of the Production Medicine

Members save on admission with KCFB Member Benefit

Plan a visit to Santa's Village Azoosment Park with KCFB member benefit for 2018. The park is open from May 5th to Oct. 28th. They then close and re-open Nov. 23rd through Dec. 16th for the holiday season. Check the website for further details – www.santasvillage.dundee.com. General admission tickets are \$22.75 + tax (age 2 and under are free). KCFB member ticket price is \$16.75 (no tax or service fees) and NO BLACKOUT DATES. Enjoy 20 rides and 100's of animals. Target audience is 12 and younger. Parking is FREE and food & drink can be brought in. Call KCFB for more information and purchase tickets at 630-584-8660.

Kane County Farmer

KANE COUNTY FARM BUREAU
PUBLISHED MONTHLY

Steven J. Arnold, Editor

Suzi Myers, Ag Literacy Coordinator
Audre Pack, Training Specialist

Elizabeth Polovin, Member Services Coordinator
Valerie Johnson, Administrative & Program Assistant
Marty Keltner, Communications Specialist

OFFICE: Randall Rd. between Routes 64 & 38

Address: 2N710 Randall Rd., St. Charles

PHONE: 630-584-8660

info@kanecfb.com www.kanecfb.com

OFFICE HOURS: 8:30-4:30 Monday though Friday

(USPS No. 289700)

POSTMASTER: Send address changes to Kane County Farmer
2N710 Randall Rd., St. Charles, IL 60174

Periodical Postage • Paid to St. Charles, IL 60174
Year Subscription: \$2.00

- | | | |
|---|---|---|
| <p>■ DISTRICT 1
Aurora, Sugar Grove,
Big Rock Twship.
Nan Long
11461 E. County Line Rd.
Big Rock, IL 60511
815-693-7214
Donna Lehrer
7S027 Jericho Rd.
Big Rock, IL 60511
630-556-3476
William Keck
P.O. Box 281
Sugar Grove, IL 60554
630-466-4668</p> | <p>Joe White
President
47W727 Main St. Rd.
Elburn, IL 60119
630-557-2517
■ DISTRICT 3
Virgil, Campton,
St. Charles Twship.
Andrew Lenkaitis
6N707 Corron Rd.
St. Charles, IL 60175
630-513-9980
Chris Collins
1143 Anderson
Elburn, IL 60119
630-934-4642</p> | <p>Mike Kenyon
Secretary/Treasurer
1250 E. Main St.
South Elgin, IL 60177
847-741-1818
Craig Bradley
37W791 Orchard Lane
Elgin, IL 60124
847-888-2380
■ DISTRICT 5
Hampshire, Rutland,
Dundee Twship.
Joe Engel
516 Sawgrass Ln.
Hampshire, IL 60140
847-347-5561</p> |
| <p>■ DISTRICT 2
Kaneville, Blackberry,
Gen./Bat. Twship.
Bill Collins
1125 Lewis Rd.
Geneva, IL 60134
630-484-6852
Karl Kettelkamp
0S860 Rowe Rd.
Elburn, IL 60119
630-365-2713</p> | <p>Dale Pitstick
128 N Hadsall St.
Genoa, IL 60135
630-816-0223
■ DISTRICT 4
Burlington, Plato
Elgin Twship.
Beth Gehrke
12N860 US Hwy. 20
Elgin, IL 60124
847-697-2538</p> | <p>Gerald Gaitsch
10613 Brittany Ave.
Huntley, IL 60142
847-669-2003
Wayne Schneider
Vice President
721 Lindsay Lane
West Dundee, IL 60118
847-428-0488</p> |

Beef store is now open!
By appointment only

*farmdirect***BLACKANGUS.com**

100% hormone free beef.
Selling individual cuts. Buy as little or as much as you want.

815.895.4691
Mark & Linda Schramer, Owners
8N840 Lakin Road, Maple Park

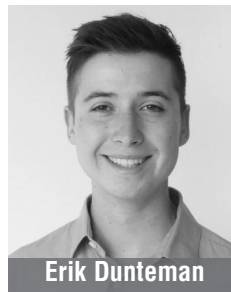


Sample Packs make great gifts!

Swanson Memorial Scholarship awarded to Erik Dunteman

The Kane County Farm Bureau FOUNDATION named Erik Dunteman of Big Rock as the recipient of the \$1,000 Chuck Swanson Memorial Scholarship. Erik is the son of

William and Kari Dunteman. The Chuck Swanson Memorial Scholarship was established by the family and friends of the former Farm Bureau Director and long-time volunteer to provide awards for students residing in Kane County, pursuing a degree in an agriculture-related career field.



Erik Dunteman

President and a member of the Hinckley-Big Rock FFA chapter. Still attending ISU, but currently studying abroad on a semester exchange in Singapore, Erik has already accomplished so much toward his end goal – giving back to the farming community that has supported him. His involvement at ISU has ranged from being a research assistant with in the Department of Agriculture and Biosystems Engineering, to working on hydraulic power systems his Freshman year, to being a summer internship at Danfoss Power Solutions. In the fall of 2017,

Erik decided to start his own company, Wyaxis, which focuses on vertical farming and he hopes to combat the increased world-wide need for food.



The Chuck Swanson Memorial Scholarship was established by the family and friends of the former Farm Bureau Director and long-time volunteer.

Blickle Family Memorial Scholarship awarded to KSU student

Mary Carr has been awarded the Blickle Family Memorial Scholarship. Mary is from Hampshire and is the daughter of Chris and Kathleen Carr. Currently she attends Kansas State University, majoring in Marketing. The Blickle Family Memorial Scholarship was started in 2015 and provides a \$1,000

college scholarship annually to a student who resides in Kane or Macon County in Illinois. The Blickle family established the scholarship to pay tribute to their farming legacy and promote the growth of the

next generation of agricultural leaders. Mary is involved on campus with clubs, honor societies, research, and her campus job in the Career Center. She participates in the University Honors Program, is a member of Kansas State Scholars and Kansas State social media team, is a representative for the College as a Business Ambassador, and recently became involved in the newly created Women in Business club. After graduation, Mary plans to focus her degree in the horticulture industry.



Mary Carr

2 AGCO Global Women's Network Scholarships awarded

Susie Thompson and Catherine Austin are this year's recipients of 2 AGCO Global Women's Network Scholarships.

Susie is from Maple Park and is the daughter of Michael and Jennifer Thompson. She is currently attending Illinois State University and is majoring in Ag Communications and Animal Industry Management.

A graduate of Central High School, Susie was very active in FFA and held roles as Secretary, Vice President, and President locally and statewide. Currently she is an ISU Agriculture Ambassador, an officer in ISU's Sigma Alpha sorority, an Equestrian Team athlete, and a Collegiate Farm Bureau member as well as a member of the National Agri-Marketing Association.

The second recipient, Catherine Austin, is currently a senior at Harvard High School and is the daughter of Jeffrey and Linda Austin. She has plans to attend the University of Wisconsin,

Platteville in the fall to double-major in Agribusiness and Accounting. A community volunteer for her church and at a women's shelter, she also participates in cross county, basketball, and softball as well as being a Captain of each team. Catherine is currently President of her FFA Chapter and has been a member all throughout high school.

The AGCO GWN Scholarship was started last year and provides a \$1,000 college scholarship annually to two female students who reside in Illinois and who are pursuing higher educations in agriculture related fields. The scholarships are funded by the Employees of AGCO Parts in Batavia, IL.



Susie Thompson



Catherine Austin

Yaeger and Plapp awarded Buck Memorial scholarships

Jessica Yaeger and Claire Plapp have been awarded Buck Memorial Scholarships. These scholarships provide \$1500 for tuition and fees for each student pursuing a higher education in an agriculture related field.



Jessica Yaeger



Claire Plapp

This marks the 17th year since the scholarship was founded with scholarships being awarded to students in the seven county service area around the Buck Bros./J.W. Turf John Deere dealership in Hampshire. It is made possible by gifts from the family and friends of the late John Buck, who established the company in 1977.

Jessica, daughter of Mark and Mary Yaeger, is from

DeKalb and graduated DeKalb High School in 2017. She was involved in many organizations

like 4-H, FFA, National Honor Society, and was Senior Captain of the varsity track and field team. Currently, Jessica attends Pennsylvania State University where she is studying Plant Science and is actively involved in the Penn State Horticulture Club and Integrated Pest Management and Biological Pest Control research. She plans

to return home after graduation, where she hopes to expand the greenhouse operation on their family farm.

Claire, daughter of Adrian and Debbie Plapp from Malta, will graduate Rochelle Township High School this year. She has been very active in the Rochelle FFA Chapter, holding many different positions ranging from Secretary to Vice President to Ag Day Greenhouse Co-Chair. Other organizations she has been a part of are the National Honor Society, WYSE Team, and has been a member of the cross country and track and field teams at school. She will be attending South Dakota State University, majoring in Dairy Science, focused on Dairy Products Manufacturing.

2 AGCO Parts Division Scholarships awarded to DeKalb, Kane applicants

Kristen Hoffman and Heidi Smith have been awarded AGCO Parts Division Scholarships this year, the first year that two have been offered.

Kristen, daughter of Daniel and Jennifer Hoffman, was a senior last year at Hiawatha High School in DeKalb County and is currently attending Iowa State University, majoring in Agribusiness. Her activities and honors are varied. She has been student of the month, Valedictorian, and is currently

on the Dean's List at college. Her activities include being an Agribusiness Club member, Senior Class President, has been on various committees, and has participated in many community activities.

Heidi, daughter of Shane and Noel Smith, is a graduate of Sycamore High School and has been attending the University of Wisconsin, Platteville where she will graduate the end of this year with a degree in Agribusiness. Her focus in communications, marketing, and management will propel her in the workplace as an advocate for agriculture, her passion.

In high school and in college, Heidi has been involved in FFA, the Ag Club, Forensics Team,

and is even a member of the DeKalb Farm Bureau. She hopes to build a career at the

Farm Bureau. The AGCO Parts division scholarship was started in 2017 and provides \$1,000 college scholarships annually to students who reside in Illinois and who are pursuing higher education in an agriculture related field. The scholarships are funded by the employees of AGCO Parts in Batavia, IL.



Kristen Hoffman



Heidi Smith

2nd Location in Wasco

40W296 Wasco Rd. Wasco, IL
2N492 Kirk Rd. St Charles, IL
630-584-2024

Locally Owned & Operated Feed Store where everyone is treated like family

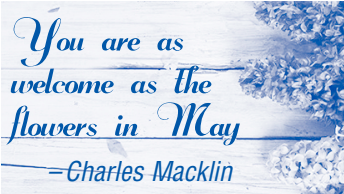
Tree Pruning BEFORE Spring Disappears
www.ArborJoe.com
ISA Certified Arborist
(224) 789-8773

2018 Kane County Plat Book now available

A new 2018 Kane County Plat Book is now available for purchase from the Farm Bureau office – 2N710 Randall Rd., St. Charles. Books are priced at \$40 for members, \$50 for non-members. Digital versions and wall maps are available from Rockfordmap.com. For more information, call 630-584-8660.

AG LITERACY CORNER

By Suzi Myers



I ran across this quote the other day and I can't seem to get it out of my mind. Maybe it's because of the snow and cold weather we've had this spring or just because it's time to see the beauty of spring unfold.

Spring ... the birds return,

flowers pop up to brighten the world, frogs start to sing their songs, trees bud, it's such a magical time of the year.

Can you imagine feeling as welcome as the flowers in May? Wow, that would make you feel so very special.

Where did the word welcome come from? It came from early medieval words for desired (willed) and guest (comer) or willed comer. This slowly evolved into welcome.

I have some friends that have

Bean dust: Sprinkle the magic liberally

A new "find" for our Kane County Farm Bureau Country Store, Bean's Farm Grilling

Dust and Seasoning hails from Hampshire where the creator, Tim Bean, is well known for selling landscape, garden, and home supplies. If you visit the farm store, however, you will see a different side of Tim, a side where outdoor cooking has made some of his favorite family memories.

A chance run-in with the competition BBQ crowd served Tim the idea to create his own seasoning. After years of fine-tuning a seasoning plan for each entry and trying time and time again to serve up that "knock-out" punch that a judge would know after only one bite, Bean Dust was born.



Tim Bean

The final offering is aimed at everyday cooking, especially grilling, for folks who love good food and like seasonings focused around core ingredients like salt, pepper, garlic, and onion, combined with a touch of heat provided by several different peppers, tempered by a hint of sweet. With the

mantra "Let the food do the talking, our rub is intended to add to your food's flavor, not replace it," you know it's going to be good. For recipes like Bean Dust Ribs, Bean Dust Wings, and Bean Dust Brisket, visit <http://beandust.com>.

Stop by the Kane County Farm Bureau located at 2N710 Randall Road to pick up your 3.2oz shaker, \$5/each.

Tractor Pillow Pets—shopping frenzy for a good cause

Motivated to help by farm accidents like the recent pipeline explosion in the Nachusa/Dixon area, AGCO Parts Division employees, active participants and sponsors of Touch-A-Tractor, set up tables overflowing with green, red, pink, and yellow tractor Pillow Pets in the Kane County Farm Bureau Board Room. All proceeds from sales over the course of three days will go to farm accident victims.

These stuffed toys definitely caused a buzz as visitors

Kathryn Johnson from Elgin is shown giving her new pillow pet tractor a hug. She was one among many other children who were excited to receive one at Touch-A-Tractor. "I could have 1,000 of these!", she said after feeling how soft it was. The proceeds collected from Pillow Pets sales will be donated to those involved in farm accidents.

stocked up, often carrying large plastic bags out and around the event! Featured tractor styles included both large and mini yellow or pink Challengers, red or pink Massey Fergusons, or green Oliver tractors. 3,566 pillow pets found new homes with sales the week prior to Touch-A-Tractor, sales at Touch-A-Tractor, and sales from AGCO employees totaling \$8,378 for those in need.



Fin Zuk wheels away with a collectible Massey Ferguson 65 Gas Tractor, won by his grandmother, Cathy McDonald, during this year's Touch-A-Tractor farm toy Bucket Raffle. Ready to "get on the road", Fin also explored the Kane County Farm Bureau's Country Store, finding even more toys to get excited about. Stop by to see what we have in stock!



See more T-A-T photos on page 8.

KANE COUNTY FARMER

the ability to extend such a warm welcome. They don't care if you come late, early, or unannounced, you are welcome. My mother-in-law had the ability to turn a meal for two into a meal for six without any problem, which was her way of extending that warm welcome. (One of the reasons she made such a great pastor's wife.) Her gardens and extensive canning/freezing of foods helped her be able to pull this off. I always admired that trait in her and have tried to emulate it over the years.

Another way folks extend that feeling of welcome is through their smiles. I can still see my mom's big smile on her

face when she welcomed (truly welcomed) me, my three kids, a dog, cat and bunny rabbit to come live with them until I could find a job and a new home and life. Now that was a smile that I'm sure took some premeditation, but it made me feel so warm inside at a time when I needed that so much.

Little kids welcome a new experience in this same way ... with such vigor, it makes those around them happy and excited too. Take a walk with a little one outside and see how they marvel at each little thing that we've taken for granted. Watching a grasshopper hop away, a worm crawl, a baby

chick peep, they just can't get enough of it. At Touch-a-Tractor this year, I had a little one who last year wouldn't even touch the chick ... watched, but no way was she going to touch it. Well, this year, she touched, watched, and marveled for many minutes. Her parents would get her to move on and then she'd be back, ready for more. In a way, the chick had welcomed her this year, so she felt no fear and could enjoy the experience.

Whatever your thoughts on "welcome," I'm hoping that you will be welcomed by friends and family as well as the beauties of spring.

Book of the month

A Seed is the Start by Melissa Stewart covers all the ways that a seed can travel to a new area to begin to sprout. The book is published by National Geographic, so one expects quality and we get it in this book.

At the beginning of the book, there is a glossary of the words needed to know to continue with the book, such as burr, fruit, nut, and seedpod. Then with great photos, the growth of a corn seed is shown. The need for the seed to travel away from the parent plant is then dis-

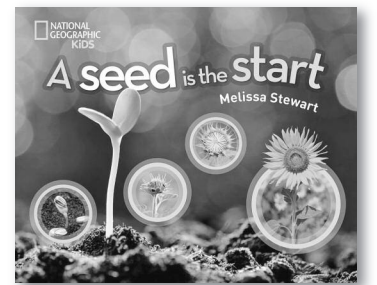
cussed, so the children understand the reasons for the seeds to disperse. Then the fun begins; seeds fly, spin and glide, tumble and spill and so on "until the seed lands, sprouts and then grows into a plant that makes more seeds"

At the end of the book, there is short index, as well as a list sources used and other books for more information.

The photography is so well done, showing the seeds dispersing from the parent plant.

This and other books in our library are thanks to the funding

of Alyce Konen, who supports our library and SPROUTS program. All are welcome to come in and check out our ever growing agricultural library.



A Seed is the Start by Melissa Stewart

Helping you protect what matters most

AUTO | HOME | LIFE | BUSINESS | RETIREMENT

Bob Effner , CLF®, LUTCF St. Charles – Elgin Agency Manager St. Charles 630-584-0001	Edward Stuehm Geneva 630-845-8245	Ashraf Gerges Aurora 630-898-3750
Todd Wilcox St. Charles 630-762-1326	Michael O'Brien Geneva 630-762-0852	Sherri Schramer Elburn 630-365-9500
Bobbi Boston St. Charles 630-485-5155	Victor Alvarado Geneva 630-492-5290	Dominick Davero Elburn 630-365-3737
Keith Eakins St. Charles 630-762-1324	Luke Fawkes Elgin 847-742-0001	Chuck Quick Hampshire 847-683-2100
Kelly Landorf St. Charles 630-762-1328	Sherry Lochen Elgin 847-742-0001	Josh Austin Hampshire 847-683-2100
Donna Tonovitz St. Charles 630-549-7694	Bob Riedel West Dundee 847-428-5434	Dan Cooper Sugar Grove 630-466-9600
Orazio Difruscolo St. Charles 630-549-7696	Gary Bolger West Dundee 847-531-6110	Ted Schuster Sugar Grove 630-466-9600
Bob Kearns S. Elgin 847-888-3200	David Murray Montgomery 630-897-2364	Sonny Ellen Sugar Grove 630-466-9600

Auto, home and business insurance policies issued by COUNTRY Mutual Insurance Company®, COUNTRY Preferred Insurance Company® and COUNTRY Casualty Insurance Company®. Life insurance policies issued by COUNTRY Life Insurance Company® and COUNTRY Investors Life Assurance Company®. Fixed annuities issued by COUNTRY Investors Life Assurance Company®. All issuing companies located in Bloomington, IL.



Farm Facts @ Fun

Compiled by Suzi Myers



The month of May is:

- ❁ National Bike Month ❁ National Physical Fitness and Sports ❁ National Mental Health Awareness
- ❁ Lupus Awareness Month ❁ Lyme Disease Awareness Month ❁ National Smile Month

May Holidays:

- ❁ May 1: May Day ❁ May 3: National Day of Prayer ❁ May 5: Cinco de Mayo
- ❁ May 13: Mother's Day ❁ May 28: Memorial Day

Mother's Day

The earliest Mother's Day celebrations can be traced back to the spring celebrations of ancient Greece in honor of Rhea, the mother of the gods. People would make offerings of honey-cakes, fine drinks, and flowers at dawn.



In the modern world, Mother's Day always falls on the second Sunday in May. This year, 2018, will be the 104th official Mother's Day in the United States. After a Mother's Day bill passed both houses in 1914, it was signed into law on May 9 by then President Woodrow Wilson.

However, the idea of an official Mother's Day had been floating around since the Civil War spearheaded by peace groups, mostly made up of mothers. Leading this cause was Ann Jarvis, who created "Mother's Friendship Day" in 1868. But Jarvis had been planning such a day before the war started in 1861.

Traditions vary for Mother's Day, but usually include some sort of family togetherness.

Memorial Day

Memorial Day is a federal holiday observed every year on the last Monday in May. It honors those who died serving the United States military.

Memorial Day originated after

the American Civil War to honor both the Union and Confederate soldiers who died in the war. The holiday was extended by the 20th century to include all American soldiers who lost their lives in military service. Memorial Day was formally known as Decoration Day.

It is traditional to fly the American flag at half-staff. Many people visit national cemeteries where volunteers will place the American flag on each grave. Memorials are attended as well. It is a day that marks the start of summer and vacation season. People will attend picnics, BBQ's, sporting events, and spend time with family.



May Day

May Day is celebrated on May 1st. In Greek and Roman times it was a day to celebrate spring. In early Gaelic times as well as in pre-Christian times in Scandinavia, May Day was also a day to celebrate the coming of spring.

In the 1900s May Day became a day to celebrate labor in many communist and socialist countries. They would celebrate the worker as well as the armed forces on this day. Later the day would become a Labor Day in many countries



throughout the world.

In many countries May Day is a major holiday such as the United Kingdom, India, Romania, Sweden, and Norway.

Cinco de Mayo

Literally meaning "The Fifth of May," Cinco de Mayo is a Mexican holiday celebrating the Battle of Puebla, which took place on May 5, 1862. It was one of the few Mexican victories during France's attempt to penetrate Mexico.

Contrary to popular belief, this was not the first time that France attacked Mexico. Back in 1838 and 1839, Mexico and France had fought what was known as the Pastry War. During that conflict, France invaded and occupied the city of Veracruz.

In 1861, France sent a massive army to invade Mexico once again. As was the case 20 years earlier, the intent was to collect on debts incurred during and after Mexico's war of independence from Spain.

The French army was much larger and better trained and equipped than the Mexicans struggling to defend the road to Mexico City. It rolled through Mexico until it reached Puebla, where the Mexicans made a valiant stand.

Against all logic, they won a huge victory. The triumph was short-lived, however. The French army regrouped and continued on, eventually taking Mexico City.



- According to the early Roman calendar, May was the third month. Later, the ancient Romans used January as the first month and therefore, May became the fifth month and it always had 31 days.
- The month May was named for Maia, the Greek goddess of fertility.
- In any given year, no month ever begins or ends on the same day of the week as May does.
- May's birthstone is the emerald which is emblematic of love and success.
- May was once considered a bad luck month to get married. There is a poem that says "Marry in May and you'll rue the day".
- May is the month of autumn in the Southern Hemisphere, and spring in the Northern Hemisphere.
- In Old English May is called the "month of three milkings" referring to a time when the cows could be milked three times a day.
- The United Kingdom celebrates May as the National Smile Month.
- The zodiac signs for May are Taurus (April 20 - May 20) and Gemini (May 21 - June 20)
- On the first Saturday in May, the Kentucky Derby takes place.

May Historical Facts:

- On May 1, 1931, the Empire State Building was officially opened.
- On May 14, 1804, Lewis and Clark, the great explorers began their trip up the Missouri River.
- On May 20, 1862, Abraham Lincoln signed the Homestead Act.
- On May 20, 1932, the first solo flight by a woman across the Atlantic Ocean was made by Amelia Earhart
- On May 24, 1607, the first permanent English settlement in America was established in Jamestown, VA.
- On May 27, 1937, the Golden Gate Bridge was opened in San Francisco.

May holidays

G	I	F	M	U	H	M	D	A	S	V	M	I	M	H	H	S	D	F	J	A	W	A	R	E	N	E	S	S	S	N	L	R	R	A	O	S	A	G	E	L	J	Y	P	H	I	S	I	C	R	C	Y	I	I	D	R	P	E	E	T	C	S	R	C	S	Y	T	Y	M	V	B	H	L	T	O	T	R	C	A	Y	E	M	W	N	M	Y	H	Y	I	E	A	I	R	M	I	A	R	U	T	N	A	O	O	I	I	T	P	A	C	S	T	K	E	S	L	D	R	E	E	I	H	R	L	C	L	Q	P	S	F	A	J	M	L	D	I	U	A	R	A	N	C	S	P	W	E	H	V	C	R	C	K	K	A	T	S	L	A	R	R	I	A	U	F	P	O	R	S	Y	C	O	J	X	G	E	N	W	O	C	T	M	R	P	Q	G	Z	O	D	I	A	C	Y	L	P	Z	A	F	S	Y	R	E	F	U	M	Q	Y	R	Q	S	H	H	G	X	Y	P	R	V	W	D	I	G	A	L	V	X	M	Q	Y	U	F	E	I	V	W	M	C	X	O	X	P	M	B	A	R	B	G	A	L	F	V	G	Q	G	I	Z	B	Q	R	R	O	N	O	H	Y	S	R	E	I	D	L	O	S	K	L	N	H	W	Q	E	T	L	F	T	O	T	L	B	U	W	Y	E	S	F	P	G	Q	I	Z	J	T	X	W	Z	H
A	W	A	R	E	N	E	S	S	S	N	L	R	R	A	O	S	A	G	E	L	J	Y	P	H	I	S	I	C	R	C	Y	I	I	D	R	P	E	E	T	C	S	R	C	S	Y	T	Y	M	V	B	H	L	T	O	T	R	C	A	Y	E	M	W	N	M	Y	H	Y	I	E	A	I	R	M	I	A	R	U	T	N	A	O	O	I	I	T	P	A	C	S	T	K	E	S	L	D	R	E	E	I	H	R	L	C	L	Q	P	S	F	A	J	M	L	D	I	U	A	R	A	N	C	S	P	W	E	H	V	C	R	C	K	K	A	T	S	L	A	R	R	I	A	U	F	P	O	R	S	Y	C	O	J	X	G	E	N	W	O	C	T	M	R	P	Q	G	Z	O	D	I	A	C	Y	L	P	Z	A	F	S	Y	R	E	F	U	M	Q	Y	R	Q	S	H	H	G	X	Y	P	R	V	W	D	I	G	A	L	V	X	M	Q	Y	U	F	E	I	V	W	M	C	X	O	X	P	M	B	A	R	B	G	A	L	F	V	G	Q	G	I	Z	B	Q	R	R	O	N	O	H	Y	S	R	E	I	D	L	O	S	K	L	N	H	W	Q	E	T	L	F	T	O	T	L	B	U	W	Y	E	S	F	P	G	Q	I	Z	J	T	X	W	Z	H																				

Name _____
 Address _____
 City _____ State _____ Zip _____
 Telephone (____) _____ Email _____ Age _____

Return to: Kane County Farm Bureau, 2N710 Randall Road, St Charles, IL 60174 by May 15, 2018 to be entered in our drawing for a month of May themed prize.

Apple teeth celebrate Smile Month

Make a yummy smile to celebrate Smile Month

You will need:

- A cored apple that has been sliced from stem to bottom
- Peanut butter
- Miniature marshmallows

How to make:

Spread peanut butter on one side of two apple slices. Press marshmallows onto one of the peanut buttered slices and top with another. Enjoy your apple smile.



Congratulations

Peggy Gross of Hampshire! Her name was chosen from the entries received for correctly completing last month's Word Search Puzzle. In honor of Arbor Day, a basket of "tree" themed products will be awarded to her. Thank you, Peggy for reading the *Kane County Farmer* and continue to watch each month for more great opportunities from the Kane County Farm Bureau.

If April showers bring May flowers, what do May flowers bring?

Pilgrims

Can February March?

No, but April May

What month always asks questions and permission?

May

Kiwanis Club of Geneva makes blankets for those affected by cancer

The Kiwanis Club of Geneva gathered at the Kane County Farm Bureau in late March for their "Blanket Making Evening", benefiting cancer patients. Keith Eakins and Deb Stob, two of our local COUNTRY Financial Reps here in St. Charles and Geneva were in attendance and along with other 6 other members. Together, they cut, assembled, and tied approximately 12 quilts. These quilts will be included in care boxes distributed by Phil's Friends. The group enjoyed getting together to donate their time and materials to a great cause!

Phil's Friends is a non-profit organization located in Roselle, IL, that began full time in 2009 by Phil Zielke, a Stage 4B Hodgkin's Lymphoma survivor, and his wife Carrie. During those hopeless times he was going through chemo, he was "blanketed" with care packages and encouraging cards and this inspired he and his wife to support others through free care packages, weekly cards, and prayer. For more information, please visit <http://philsfriends.org>.

Photos, left to right:

Deb Stob, member of the Kiwanis Club of Geneva, carefully cuts a panel for a quilt she is making. Each quilt made by the Kiwanis Club will be donated to Phil's Friends, an organization that sends care packages, cards, and prayers to those affected by cancer.

COUNTRY Financial agents Deb Stob, Geneva office, and Keith Eakins, St. Charles office, both members of the Kiwanis Club of Geneva, hold up one of the quilts they cut, assembled, and tied for Phil's Friends care packages. These care packages are then sent out to people dealing with cancer and are often a bright spot in their day.



Label lingo complicates food purchases

The label on the can of green beans steamed me before I steamed the contents. A well-positioned emblem demanded my attention with the phrase non-GMO. I agreed. They are non-GMO. Just like every other can of green beans in the store or the Blue Lake variety in my summer garden. There's no such thing as a GMO green bean. But if you didn't know, you would think that of the competitor on the shelf.

Mark Twain receives credit for having said, "It's easier to fool people than to convince them that they have been fooled." Believe it or not, there's no gluten in a bottle of orange juice, no genetic modification in popcorn nor antibiotics in milk or meat at the grocery store.

Sustainable. All-natural. Conventional. Organic. High-fructose corn syrup. Locally grown. Antibiotic-free. Genetic engineering. Enhanced with water. Responsibly raised. The marketing behind catchphrases such as these irritate some farmers like a leaky rubber boot. Those of us who know the truth behind the label lingo fear that when marketers use these words as persuasive ploys, they leave too many consumers reaching for products with what seems the "best" label.

When did food get so complicated? The Illinois Farm Families web site WatchUs Grow.org addresses common food questions with some fun quick-hit videos, short testimonials and on-target literature. The site presents educational material in a grab-and-go format, a friendly gesture to most us who seem perpetually short on time. It's worth a look, even if you think you know the content already. If nothing else, consumers and farmers can learn how to frame the food conversation with fellow bleacher buds at the basketball game or room moms at the next

holiday party.

My farm family has chatted on more than one occasion about the increasing fog of information and opinions that makes the truth hard to find. Sometimes, I sigh deeply, go to bed and hope I can sleep off the world's nonsense (far more than labeling issues, of course). The strategy never works, but I feel more prepared for the next day's dilemmas with seven hours of slumber.

Our family has a history of growing both GMO and non-

GMO corn and soybeans on our farm, so I'm fine with either choice. Rather my irritation lies with the stereotypes and the arrogance of opinion. In the end, people believe what they want to believe, fooled or not by the cans they grab for that dish of green bean casserole.

About the author: Joanie Stiers manages records for her family's third-generation farm that grows corn, soybeans and hay and raises beef cattle in West-Central Illinois.

Thank you,
KCFB Young Farmers

Dear Kane County Farm Bureau,

At Northern Illinois Food Bank, our vision is for no one to be hungry in northern Illinois – and with YOUR help, we are making that vision into a reality.

By volunteering on Thursday, March 1st, Kane County Farm Bureau Young Farmers was able to create an incredible social impact by helping process 3,865 pounds of potatoes, providing 3,220 meals for our hungry neighbors in northern Illinois! With your amazing help, we are one step closer to reaching our goal of providing 75 million meals by the year 2020.

We truly hope you had an awesome experience with us and will be visiting us again! Please share your experience with your family members and friends, so they can join in on the fun as well. Feel free to post any photos you have on our social media accounts. You may tag us and use #helpie so we can see all of your fun photos.

Thank you so much for making a huge difference in the lives of our hungry neighbors. We look forward to seeing you again!

Thanks to our Donors...

Our FOUNDATION is dedicated to providing agriculture based education for the next generation, and to meeting the challenge of providing food for a hungry planet. We look forward to continuing support for these scholarships, along with local classrooms and teachers, leadership training, and community youth education through grants to local FFA Chapters and 4-H.

The KCFB FOUNDATION offers its sincere appreciation to the following for their contributions in response to our December Agriculture in the Classroom fundraising appeal. Names shown are pledges received from March 16th through April 17th.

KCFB FOUNDATION Donors

Mary & Wendell Dienst, Maple Park



HARVEST FOR ALL

Through Harvest for ALL, KCFB members have contributed the equivalent of nearly 1.75 million meals to local food pantries.

Donor: CHS Elburn
Beneficiary: Elburn Food Pantry



SHOW YOUR SUPPORT FOR FARMERS!
Text FARM to 52886

FREE farmer training in May

Illinois Farm Bureau will be offering single day workshops at three locations around the state in May. These workshops are for growers and marketers of farm direct and/or local foods. The offerings are May 7th (at SIU), May 10th (at Henry County Farm Bureau, Cambridge), and May 11th (at Champaign County Farm Bureau, Champaign).

Workshop attendees will learn how to: Understand and meet customer's needs and values; seek buyers and maintain healthy relationships; sort and

pack for wholesale markets; network and hear from buyers and other wholesale farmers; and, discuss the details, from varieties, quality, pricing, communication, sequential planting, quality control, merchandising, trends, and more.

Refreshments and networking start at 8:30 with the workshop beginning at 9:00AM. All attendees will receive lunch, training, and a free workshop manual that typically retails for \$70. Pre-registration is required online at www.ilfb.org/LiveLocal.

Live LOCAL
GROW. BUY. EAT.

JOIN US FOR THIS FREE 1-DAY WORKSHOP

Learn How to Grow Success as a Direct Market Farmer

SAVE the DATE

- MAY 7TH**
Southern Illinois University
3268 W. Pleasant Hill Road
Carbondale, IL 62901
Hosted by: Jackson and Union County Farm Bureaus
- MAY 10TH**
Henry County Farm Bureau
128 N. Prospect St.
Cambridge, IL 61238
Hosted by: Rock Island, Mercer, and Henry County Farm Bureaus
- MAY 11TH**
Champaign County Farm Bureau
801 N. Country Fair Dr. Ste A.
Champaign, IL 61821
Hosted by: Champaign County Farm Bureau

REFRESHMENTS & NETWORKING: 8:30AM CLASS: 9:00AM-4:00PM

This 1-day workshop will help you:

- Understand and meet your customer's needs and values
- Actively seeking buyers and maintain healthy relationships
- Learn about sorting and packing for wholesale markets
- Network and hear from buyers and other wholesale farmers
- Discuss the details, from varieties, quality, pricing, communication, sequential planting, quality control, merchandising, trends, and more

Participating farmers receive a FREE copy of the Direct Market Success manual. LUNCH AND SNACKS ARE PROVIDED. PREREGISTRATION REQUIRED.

Register online at www.ilfb.org/LiveLocal

Sponsored by

familyfarmed

USDA is an equal opportunity employer.

This material/event is funded in partnership by USDA, Risk Management Agency, under award number RM17RMEPP52C038 Springfield RO.

Lucky's ENERGY SERVICE

"Fuel Is Our Life"

We offer wet hosing, bulk tank fills and package lubricants – D.E.F, Oil, Hydraulic, Diesel and Gas for all your needs.

We are a 24/7 Fuel Supplier servicing Illinois – Wisconsin – Indiana
Call us today at 847-994-3010 or visit us online at www.luckysenergy.com
Growing To Serve You Better

Second annual Chili Cook-Off a delicious success!

The Kane County Farm Bureau's FOUNDATION celebrated National Chili Day by featuring 11 participants and 12 very different chilis. New this year was the cornbread competition in which there were several savory entries.

"Celebrity" judges for the competition included Kane County Board Members Jarett Sanchez, Don Ishmael, and Mike Kenyon. Chilis and corn breads were thoughtfully judged

based on taste, consistency, aroma, color, and "bite" (spice). When the dust settled, there was a decided winner in each of the 5 categories.

Steve Arnold, KCFB Manager, announced the winners while Joe White, President of the KCFB, awarded each person with a trophy and, just like an Olympic Awards ceremony, garnished them with a winning medal. Bonnie White of Elburn took the Traditional Chili cate-

gory by storm for her Crispy Bacon chili; the Non-Traditional chili category was sheepishly awarded to Marty Keltner of Elgin for her El Diablo Smokin' Hot lamb/peach/bourbon chili; the Wildlife chili was won by "Wildman" Steve Arnold for his Beef, Sausage, Venison Tailgate chili; and the non-carnivorous Vegetarian/Vegan chili winner was Dave Spoerl of St. Charles, also owner and operator of Dave's Slow Food Truck, for his

bean chili. The winner for the best cornbread was also Spoerl for his cornbread pudding, a crowd favorite that evening.

Guests mingled, chatting and enjoying tastings of the chilis featured and many took bowls home to enjoy later.

A special thanks to Kim Valentine for entering her Valentine's Veggie Lovers chili & vegan cornbread muffins, topped with Buckaroo pepper jam; Sharon & Anthony

Pferschy of Garlic Breath Farms for their Garlic Breath Chili; Sandy Davero for her White Chicken chili; Gladys Arnold for her Pioneer Woman's Bloody Mary chili; Liz Polovin for her Dizzy Lizzy's Sassy Red Wine chili and jalapeño muffin tops, Val Johnson for her Guinness chili; and Suzi Myers for her Weight Watchers 1 Point chili and traditional corn bread.

What's new in the COUNTRY agencies?

St. Charles Agency, Bob Effner, Agency Manager

CALIN MARCHIS has been named the Rep of the Month for March 2018 in the St. Charles/Elgin Agency, as announced by Agency Manager, Robert J. Effner, Sr., CLF®, LUTCF. Calin has provided tangible plans for addressing the immediate and long term insurance needs of his clients through COUNTRY Financial's diverse products and services: Auto,

Farm, Home, Life, Business, Retirement. Let Calin's expertise help you! You may reach Calin at 630-365-9512, calin.marchis@countryfinancial.com or <https://representatives.countryfinancial.com/calin.marchis>. Congratulations, Calin!

Aurora Agency, Kevin Gomes, Agency Manager

Zach Fox, Financial Representative with the Aurora Agency, is our Financial

Representative of the Month for March 2018. Zach began his career with COUNTRY Financial in May of 2007 and services clients out of his office located at: 1920 Wilson Street, Batavia, 60510, (630) 406-6900

Zach's professionalism and vast knowledge of auto, home, life, commercial and financial products make him a great person to do business with. Congratulations, Zach!

CLASSIFIED ADS

CLASSIFIED AD RATES

Classified advertising rates: 20 cents per word/\$20 minimum (60 words or less). DISCOUNTS for members: Associate members, 20%; Voting members, 30%; PLUS members, 40%. Advance payment requested. Ads due by the 15th of every month for the next issue. No advertising (classified or display) for financial or insurance services will be accepted. Call 630-584-8660.

SERVICES

Jim Verhaeghe & Sons, Inc. - Tree removal, tree trimming, & stump grinding. Backhoe work & Tile Lines. Fully insured - Free Estimates - Jim Verhaeghe Sr. Call: 847 334 5730

Tree Pruning & Removal BEFORE Spring Rush - www.ArborJoe.com- Call ISA Certified Arborist Joe: 224 789 8773

WANTED

CUSTOMER SERVICE Position, 30-35 hours weekly, applicant must be computer literate with pleasant phone voice and manner. Perfect for the parent with child in school or evening college student. All applicants must be self-starters and able to work as part of a team. Our office is located on East side of Saint Charles. We do not work Sunday's. We offer paid vacation, a Self-Directed Saving Plan, and Partial Tuition Reimbursement. Call: Bob: 630 377 5807

Paying cash for old advertising signs, clocks, and wall thermometers. Gas and oil, farm equipment and seed, soda and beer, tobacco, food, and consumer goods. No reproductions please. Call Rick and leave your name and phone number. Call: 815-286-9090

Want to buy vintage & used tools Call Chris - Also, we do cleanouts. Call: 630 550 7182

Excavating contractor seeks heavy equipment operator, mechanic & CDL driver. Call: 630 232 6223

FOR SALE

1952 Ford F-6 farm truck/Omaha dump grain box, V8, 2 speed axel 28,000 original miles, barn kept, engine runs great-\$7,000. JD & New Holland 8 ton hay wagons \$1,200 & \$1,000. Box wagon-\$800. Call: Victor: 630 988 5726

220V Rockwell/Delta wood lathe 42" table- \$850, Industrial drill press-\$250, Rockwell 2 wheel bench grinder \$125, 220b wood/metal buffer-\$125, Misc. barn timbers, antique wine presses-1 large -\$450 & 2 small-\$200 each. Call: Victor 630 988 5726

SHOW YOUR SUPPORT FOR FARMERS!
Text FARM to 52886



Photos, top to bottom:

The audience eagerly awaits announcements from the judges of the winners for each Chili category. (L-R) Don Ishmael - judge, Jarett Sanchez - judge, Steve Arnold, Joe White, and Mike Kenyon - judge.



Winner of both the vegetarian chili category and best cornbread, Dave Spoerl (R) of Dave's Slow

Food, shakes the hand of Joe White (L) as White awards him a trophy and medal.

AITC Coordinator, Suzi Myers, gathers tastings of Kim Valentine's Veggie Lovers chili to present to the judges. There were a total of 3 chilis entered in the vegetarian/vegan category this year, adding to the variety of choices for guests to enjoy.



Recruiter of the Month

Each month we honor the person who signs the most members into our organization. This month, the honor goes to Felipe Rocha! Felipe has been a COUNTRY Financial Representative since August of 2011. His office is located at 541 N. Lake Street, Aurora. As a token of our appreciation, Felipe receives

two tickets to Charlestowne Movie Theater. Thank you for your continued support of the Kane County Farm Bureau and congratulations on your success!



Felipe Rocha




Water Softeners
Iron & Sulphur Filters
Drinking Water Systems
Sales-Rentals-Service
All Makes




Kane County Farm Bureau members receive 10% discount on all service work.

FACTORY DIRECT PRICES
◆◆◆◆ NO FIX - NO CHARGE ◆◆◆◆

630-584-5559

www.johnsonwater.com








Recycle
Scrap for CASH

Steel, Copper, Aluminum & Cars

Trucking & Dumpster
Service Available

"Helping to keep America Picked up for 45 years"

Zimmerman Recycling, Inc.
301 Industrial Drive, DeKalb
(815) 756.8600

Touch-A-Tractor brings farm life to the suburbs

Hundreds of families and dozens of faithful volunteers enjoyed a weekend on the lawn at the Kane County Farm Bureau during the 13th Annual Touch-A-Tractor in April. Mother Nature challenged visitors this year with colder than normal temperatures and wind, however, as the weekend progressed, the sun came out and the winds died down, making Touch-A-Tractor the perfect way for families to get outside and enjoy activities and learn about agriculture and how farmers provide food for a growing population.

Machinery on display included varied brands of small antique tractors, large modern equipment, a 34-row planter, a combine and Quadtrac tractor to name a few. Visitors of all ages enjoyed seeing baby chicks, baby lambs, and a calf. Other attractions included carnival style games, a pedal tractor track, selfie stations, a "culvert crawl", a percussion string, movies, and toy tractor and corn corrals.

Touch-A-Tractor visitors helped raise college scholarship funds for the KCFB FOUNDATION through the Winner's Choice 1965 F100 Ford Truck Raffle. This year, the FOUNDATION awarded 24 students with scholarships to assist them in pursuing careers in agriculture. Many of the FOUNDATION's 2018 scholarship recipients and their families were on hand to volunteer and to recognize the accomplishments of these future Ag industry leaders.



1.



4.



5.



2.



3.

1. Kids of all ages had a great time climbing over and through the large culverts on the lawn. These culverts provided tons of photos opportunities for families, some great "hide-and-seek" places, and a good way to get some exercise by racing through them.

2. Storytime returned to this year with local author, historian, and volunteer, Ann Brack-Johnson. She presented her book, *Angie of Garfield Farm* at three different times to audiences at Touch-A-Tractor. She was animated as she read excerpts from her book and showed props to help the kids in the audience visualize the time that the book is set in, 1847.

3. Creative face painting was one of the most popular events this year held inside the Kane County Farm Bureau on Saturday. Mireille expertly transformed each child into the character they wanted to be. Thank you to Midwest Fun Factory for making special memories for many of the children who attended.

4 & 5. Jacob Crowley's face portrays his amazement when receiving an AGCO balloon at our Touch-A-Tractor event. A popular take-away, balloons were seen being held tightly by children and adults all around the event. AGCO offered visitors activities for the family both inside and outside the Kane County Farm Bureau. Inside, guests found farm toys, tractor t-shirts, keychains, lanyards and baseball caps for sale as well as "spin the wheel" for a prize. Outside, Joshua Converse helped kids gathered around the lollipop tree to pick lollipops to win prizes.

Soil testing yields perfect lawn/garden

A great service the Farm Bureau offers its members is soil testing. Choose from three different tests depending on your needs, and get results back in 7-14 days. Some tests even provide specific recommendations to give you the best lawn and/or garden on the block! To start, go to www.kanecfb.com and click on benefits and services for a soil test form, or pick one up at the KCFB office. Deliver samples to Kane County Farm Bureau with payment. Results are emailed or mailed to you directly. Call the 630-584-8660 for more details. Prices listed are for Kane County Farm Bureau members and non-members. Ask us how to save even more when you upgrade your membership to a PLUS membership.

Why test your soil? Soil in its natural state is rarely fertile enough for the best growth of plants. Usually it is necessary to replenish the earth's store of plant nutrients to obtain the most vigorous lawn, the most abundant and brilliant flowers, the prettiest trees and shrubs and the

greatest yield of fresh veggies.

When is the best time to test soil?

Proper sampling is important to obtain accurate results. Samples can be taken any time during the warmer months, when soil temperatures are at least 55 degrees. If the soil is too wet to spade, rototill or hoe, it is generally too wet to take a sample. On the other hand, extremely dry soil should not be sampled either.

How often should I test? Ideally, soil should be tested every 3-5 years, more frequently with intensive use. Try to sample during the same season each time for the best comparison.

Why does Farm Bureau provide this service?

Kane County Farm Bureau was founded in 1912 as the Kane County Farm Improvement Association, to help farmers improve their production practices and increase the fertility and productivity of their soil. This program is an extension of that. It helps you take the guess work out of gardening!

Additional help for your lawn & garden is available through the University of Illinois Master Gardeners. Contact them at 630-584-6166 or visit their office at 535 Randall Rd., St. Charles.

Soil test costs

Basic PH Test

\$20 per sample for members, \$30 non-members

This test checks for soil pH, phosphorus, and potassium.

Lawn/Garden Test

\$30 per sample for members, \$40 non-members

This test includes the basic test plus organic matter and recommendations on amount and timing of fertilizer.

Lawn/Garden Plus

\$50 per sample for members, \$60 non-members

This test includes the Lawn & Garden test plus nutrients, iron, zinc, manganese, copper, sulfur and boron. This test also includes recommendations.

Thank you...

Many volunteers contribute to the success of Touch-A-Tractor. The bringing together of families, the smiles on the faces of the kids ... and the farmers, who are rightly proud of their profession, made it all worthwhile! Kane County Farm Bureau and our Foundation offer thanks to the following individuals for making equipment available, for demonstrations, help with set-up and staffing during the event and otherwise assisting in the success of this farm-city relations and FOUNDATION fund-raising program. We apologize to anyone we inadvertently omitted. Without your help, Touch-A-Tractor would not be possible.

- Gladys Arnold
- John Biddle
- Craig Bradley
- Frank Carlson
- Bill Collins
- Jerry Gaitsch
- Beth Gehrke
- Carolyn Gehrke
- Wayne Gehrke
- Bob Gehrke
- Lisa Geisler
- Louise Johnson
- Mike Kenyon
- Megan Mingl
- Dale Pitstick
- Jim Reynolds
- Wayne Schneider
- Joe White
- Bonnie White
- Karl Kettelkamp
- Michael Bohlin
- Jessica Bowgren
- Joe Gorenz
- The Ryan Ford Family
- Jalynn Ford
- Flo Dangelo
- Sandy Gould
- Beth Engel
- Wyatt Williamson
- Nan Long
- Chris Collins

Elgin History Museum

- Al Walters
- Kathy Walters
- Paul Larsen

Christen Sundquist

Ann Brack-Johnson, Author of *Angie of Garfield Farm*

COUNTRY® Financial

- Bob Effner
- Deb Stob
- Keith Eakins
- Todd Wilcox
- Kelly Landorf
- Victor Alvarado
- Amanda DiCanio
- Ed Stuehm

AGCO Parts Employees, Batavia

- Andrea Achermann
- Austin Henkelman
- Barb Reu
- Belinda Meyer
- Bill Smith
- Carol Scott
- Cindy Woodward
- Connie Ferrer
- Eva Bright
- Franky Achermann

- Joshua Converse
- Laurie Cantu
- Mark Crowder
- Nikolay Achermann
- Reuven Chavira
- Sara Smith
- Tammy Whiteside
- Tim Scott
- Will Huber

AAIC (American Agricultural Insurance Company, Schaumburg)

- Nancy Ferrell
- Gordan Brand
- Steve Michels
- Chris Wolak
- Mike Pappas
- Doug Walls

Burlington FFA

- Alexis Head
- McKayla Peters
- Jenna Peters
- Krysie Swanson
- Elena Chapa
- Jake Thompson
- Elizabeth Titock
- Lexi Weisbrock
- Davis Dunham
- Jackson LaPenske
- Amber Francisco
- Evan Kang
- Ashley Walker

Kaneland FFA

- Kyla Baldrige
- Hannah Garbacz
- Jackson Kettelkamp
- Andrew Gould
- Madi Tegtmann
- Anastasia Kurth

Hinckley-Big Rock FFA

- Aurora Grivetti
- Tomi Harrod
- Elburn Lions Club

Hawk Ford

For providing Tractors ...

- Dan Kocher
- Larry Koesche
- Jim Lickteig
- Bruce Nagel
- Randy Wilkening
- Gerard Fabrizius
- Colby Reichling - R Equipment
- Kyle Skaja - Buck Bros.
- Fred Voytovich - Buck Bros.
- Eldon Gould
- Joe White
- Mark Anderson
- A.C. McCartney Implement

Winner's Choice Raffle tickets available

Don't worry, it's not too late to buy your raffle tickets to win this year's Grand Prize - a 1965 F100 Ford Pickup Truck.

Whether you're a Farm Bureau member or not, you can be the lucky winner of one or more than six great prizes in Kane County Farm Bureau FOUNDATION'S Winner's Choice Raffle. All proceeds from the annual raffle benefit KCFB FOUNDATION College Scholarships and Farm Bureau Agricultural Literacy programs.

Tickets are \$15 each, 2 for \$25, or 5 for \$50 and are available at Kane County Farm Bureau (2N710 Randall Road, St. Charles) or from the Farm Bureau directors listed on page 2. Payments can be made with Visa, MasterCard, or Discover at 630-584-8660, or by sending payment with the ticket request form at right.

In 2018, the FOUNDATION will award over \$40,000 in tuition assistance through scholarships, internships and grants. These are the young people studying to keep our food system the best in the world. Show

your support for their educational goals and get in on the fun of this annual raffle.

The grand prize for the annual raffle will be drawn at the 4-H Blue Ribbon Sale at the Kane County Fair Grounds on Sunday, July 22, 2018, at 3 pm. The Grand Prize winner can choose between a 1965 F100 Ford Pickup Truck, a John Deere X350 riding lawn mower, or \$3,500 cash. There is a great lineup of food, fuel,

and Farm Bureau prizes that include a second prize of \$500 in groceries, a third prize \$500 in fuel, and a fourth prize is \$250 in Kane County Farm Bureau Bucks.

Tickets are available at the Farm Bureau office in St. Charles or by calling 630-584-8660.



KCFB FOUNDATION Winner's Choice Raffle

Please send me _____ tickets (\$15 each, 2 for \$25, or 5 for \$50)

Name _____

Address _____

City, State, Zip _____

Email _____

Phone (_____) _____

Return with check made payable to Kane County Farm Bureau Foundation, 2N710 Randall Rd., St. Charles, IL 60174 or charge my

Visa MC # _____ / _____ / _____ Exp _____ / _____

Signature _____ Date ____ / ____ / ____