

# Kane County Farmer



**KANE COUNTY  
FARM BUREAU®**  
Farm. Family. Food.™

Enhance the quality of life for member families;  
Promote agriculture, farms & food; and,  
Advocate good stewardship of our land and resources.

VOL. 87 NO. 5 MAY 2022

## Teachers Only Farm Tours

What happens on Illinois farms? Why? And Who is behind it all? These questions and more will be answered in a “behind the barn doors”, teachers-only tour of Kane County farms and food businesses in early June. Tours will include specialty crop, dairy and grain farms, a nursery and a distillery, and more. Teachers may even get the chance to drive a combine!

The 3-days of events kick-off on Monday, June 6 at 8 am at Kane County Farm Bureau in St Charles where farm, food and environment lesson plans, curriculum and FREE classroom resources will be shared by leaders in the fields of conservation, water, soil, apiaries & beekeeping, commodities and plant nutrients. For day 2 (Tuesday, June 7) and day 3 (Friday, June 9), teachers will board a bus early in the morning at the Farm Bureau for visits to area farms, nurseries, etc. where they will receive “behind the barn doors” tours from the farmers and business owners. The

final day will include “classroom” time to reflect on experiences and tour sites and discuss how to turn those experience into classroom learning.

The cost to attend is only \$70, a 50% discount from 2021, and includes a one-year KCFB membership (\$50 for KCFB members). Space is limited to the first 14 K-12 teachers. Those who participate will receive Professional Development Units from the Kane County ROE for each full day of attendance.

Registration deadline is May 31 at 4 pm. For more information or to register and save your seat for this KCFB Summer Ag Institute, contact Kelcee Miller at 630-584-8660 or [aitc@kaneafb.com](mailto:aitc@kaneafb.com).

**Half off!  
Register today**



SAI participants visit the Monsanto test lab in this KCFB file photo.

## Farm toy of the month

This month's farm toys are 2 lightly used Ertl 1/16 scale John Deere 8360R Tractors with duals. Regular retail price is over \$100, but these “out-of-the-box” models are in our way.

One is priced at \$50 and the second, needing minor front axle repairs, is only \$25. First-come, first-served, and when these 2 are gone, we're out because they are currently out-of-stock.



### May Featured Food

#### New York Strip Steaks

This month we're offering TWO different boxes of NY Strip Steaks. The first box contains four, 12 oz delicious Inboden's NY Strip Steaks and the second box contains six, 9 oz. thick NY Strip Steaks, perfect for a weekday dinner. They are a very popular, high quality meat ready for your grill. The member price for the 12 oz. NY Strip Steak box is 45.95 and \$46.95 for the 9 oz. box. PLUS members always receive a 5% discount on all food products. These special steaks are available while supplies last for the month of May at the Kane County Farm Bureau, Randall Rd. and Oak St. in St. Charles.

## Drive-thru BBQ's for KCFB Foundation Fundraisers set for second Thursdays–May-Oct.

KCFB Foundation is teaming up with Fay's Finest Foods of Waterman to offer its members and the public a convenient and delicious way to raise money for our college scholarships and agricultural literacy program efforts. Our kickoff begins Thursday, May 12th on the parking lot at the Farm Bureau on Randall Road in St. Charles.

From 3 p.m. to 7 p.m., drive-thru diners can choose from 3 meals at \$16 each (if paid in advance), a **2 pork chop meal**; or **2 chicken quarters**; or a **1 pork chop, 1 chicken quarter**

**combo**. All meals will come with baked beans, coleslaw, apple sauce, a roll and butter.

The Farm Bureau parking lot will be set-up for fast and convenient drive-thru service, order for the entire family! Meals will also be available on a limited basis for drive-ups without a reservation at a slightly higher, \$17.00 price.

All sales will benefit the KCFB Foundation and meal reservation, and pre-payment is encouraged. To reserve your meals and pre-pay, return the form on page 4 or call KCFB at 630-584-8660.

### KCFB Foundation/ Fay's BBQ Drive-Thru Fundraisers 2022

**May 12**  
**June 9**  
**July 8**  
**Aug 11**  
**Sept 8**  
**Oct 13**

At Kane County Farm Bureau,  
Randall Rd. at Oak St.,  
St. Charles

## KCFB Foundation announces 2022 scholarship recipients

The Kane County Farm Bureau Foundation will award \$27,000 in college scholarships this year to 18 future Ag industry professionals. After a review of applications, the FOUNDATION Board of Directors has awarded 1 President's Scholarship, 7 general agricultural scholarships and 1 general scholarship. The Foundation also administers the John Buck Memorial scholarships (2), Chuck Swanson Memorial Scholarship, and 5 scholarships for AGCO; 2 AGCO Parts Division Scholarships, 2 AGCO GWN Scholarships and an AGCO Platinum Scholarship.

“This year we had a good response for our scholarships,” said FOUNDATION Vice President Wayne Schneider. “We at Farm Bureau are certainly

proud of the students who plan on going into agriculture related careers. Our county will be well represented in the future!”

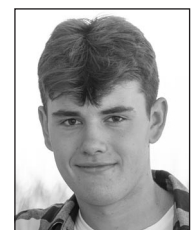
As a not-for-profit entity, the Foundation solicits and distributes private funding for scholarship, education and leadership training, Ag-in-the-Classroom programs, Ag Literacy, charitable activities and research. The Foundation was established in 1989 by the Kane County Farm Bureau to carry out charitable work in the advancement of agricultural literacy and preparing students for careers in the agriculture industry. In its history, it has awarded hundreds of thousands of dollars in college scholarships and internships.

Foundation scholarship applications are submitted by Feb. 15 each year and recipients

are announced in April. Prerequisites and more details on scholarship requirements are available at [www.kanecfb.com](http://www.kanecfb.com).

KCFB Foundation scholars will be recognized at a ceremony on July 15th. The Foundation Board extends congratulations to these young leaders of tomorrow and best wishes in their academic pursuits.

### Genoa senior receives President's Scholarship



**Colin Nesler**  
son of Jeff and Laurie Nesler of  
(continued on page 6)

The Kane County Farm Bureau Foundation has awarded its \$2,000 President's Scholarship to Colin Nesler,

## NOTICE OF ANNUAL MEETING

Notice is hereby given that the 109th Annual Meeting of the Kane County Farm Bureau will be held at the Kane County Farm Bureau, 2N710 Randall Road, St. Charles, IL 60174 on Thursday, June 9, 2022, at 6:30 pm for the purpose of receiving and acting upon reports of officers, the board of directors, and management for the fiscal year ended December 31st, 2021, and to announce the five directors elected to serve terms of three years, and for transaction of any other business that may properly come before the meeting.

*Michael Kenyon*, Secretary

**CAUTION,   
SLOW DOWN,  
SHARE THE ROAD!**



As spring planting begins across Northern Illinois the Kane County Farm Bureau reminds motorists to exercise CAUTION, SLOW DOWN and SHARE THE ROAD with large, slow moving farm equipment traveling between farmsteads and farm fields. A limited number of FREE 3' x 10' banners are available at the Farm Bureau office in St Charles to do just that. They would be great safety reminders to place in farm field corners, at fire stations, banks, township offices and grain elevators in Central and Western Kane County.

### KCFB CALENDAR MAY 2022

- 12** Board of Directors, 7pm
- 12** KCFB Foundation – Fay's Drive-Thru Pork-Chop or Chicken BBQ dinner (4-7)
- 19** Kane County Board Ag Committee, 10 am
- 30** Memorial Day

(All at KCFB, 2N710 Randall Rd., St. Charles unless otherwise noted)

# Mary Nagel – 1930-2022

Mary J. Nagel, 91, of Sugar Grove, passed away peacefully at home surrounded by family on April 7, 2022. She was born on October 17, 1930 in Chicago, the daughter of the late Martin and Jeanette (nee Brown) Grothaus. She was united in marriage to Arthur F. Nagel and spent 40 years of marriage together on the family farm in Sugar Grove.

Mary will be remembered for being a great friend, a faith-filled, kind, selfless woman, a loving mother and grandmother. Mary was an active member of the Women's Committee of the Kane County Farm Bureau for over 30 years

## Drivers and farmers alike reminded to be extra cautious during planting season.

Rural roadways can pose a major safety hazard to farmers and drivers during planting season. Slow moving farm equipment can frustrate drivers, leading to passing in restricted or poor visibility areas or rear-end collisions when a speeding car overtakes a slow farm implement. Too often a vehicle attempting to pass causes a collision before the tractor or farm implement can finish a left-hand turn.

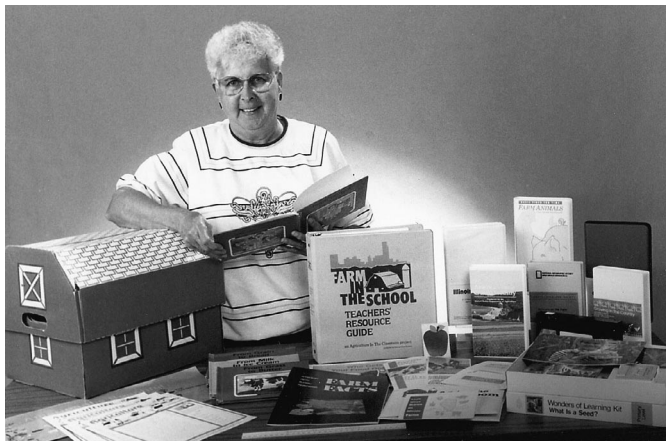
Visibility is also a key to safety on the roads. All agricultural vehicles using the public roadways must display the fluorescent orange Slow Moving Vehicle triangle. Additionally, tractors and other self-powered farm vehicles must have proper lighting. According to Illinois law:

- Lighting is required from 30 minutes before sunset to 30 minutes after sunrise.
- There should be two white lamps on the front of the vehicle, visible from at least 1000 feet to the front of the vehicle.
- There should be two red lamps on the rear of the vehicle, visible from at least 1000 feet to the rear of the vehicle.
- There should be at least one flashing amber signal lamp on the rear of the vehicle, mounted as high as possible and visible from at least 500 feet, which can be used during daylight as well.

Safety experts remind farm workers not to ignore their own needs while rushing to get the spring crop planted. They emphasize rest, nutrition and hydration and urge farmers to take the time to eat, stretch their legs and keep hydrated. These simple measures can make a big difference in safety.

Tractor overturns are the leading cause of fatalities in the agriculture industry, according to the Occupational Safety and Health Administration. These accidents result in about 130 deaths each year nationwide.

and a leader in the Ag in the Classroom program which helped to educate thousands of fourth grade children from local towns and cities each year with



Mary Nagel, in a 1990's Illinois Farm Bureau photo promoting agricultural literacy resources for teachers and students.

the purpose of learning about agriculture related topics. The greatest joy in her life was celebrating milestones and holidays with family.

As a past Chair of the Kane County Farm Bureau Women's Committee and a District Representative on the State Women's Committee, Mary was a most active and ardent supporter of Ag in The Classroom activities. She organized the

Farm Bureau's AgDays program for over 30 years, at both the Kane County Fairgrounds and at the Mooseheart Fieldhouse. Farm Bureau's current Touch-A-Tractor event owes its origins to, and is an extension of, AgDays. Mary also spearheaded the formation of AgTech at Teeple Barn, a not-for-profit formed to save and restore the 1885 Elgin landmark for use as an agricultural education center.

Funeral services were held April 22 at St. Katharine Drexel Catholic Church, Sugar Grove. The family requested that in lieu of flowers, donations be made to the donor's favorite charity, or to Mary's, The American Cancer Society. Kane County Farm Bureau made a memorial contribution in Mary's honor, and will place a marker at the base of a Red Oak tree in the Farm Bureau's Centennial Grove in her memory.

## Welcome new members

You receive the Kane County Farmer because you are a Farm Bureau member. If you are a farm operator or owner, you benefit from a local, state and national organization committed to agriculture and your way of life.

If you do not have direct ties to farming, your membership helps promote local farms and farming, encourages wise use of our limited natural resources and preserves farmland and our agricultural heritage while allowing you to enjoy COUNTRY insurance and the many benefits of one of Illinois' premier membership organizations.

We appreciate your membership and continued support and we welcome your comments on the content of the Farmer. We encourage you to make recommendations about farm, home, food, natural resources, renewable energy or agricultural heritage and history-related topics for inclusion in future issues of the Farmer.



Kane County farmers have taken to the fields and will plant an estimated 90,000 acres of corn and 60,000 acres of soybeans as weather permits, during a period of rapid inflation in fuel and fertilizer prices and tight supplies in other crop inputs.



**TRELLIS**  
Pet Food • Propane  
Salt • Delivery

Your local source for feed, supplies, and so much more!



St Charles and Wasco 630-584-2024

# Committee advances candidates for election ballot

The 2022 Nominating Committee of the Kane County Farm Bureau has completed its work to interview potential candidates for a May ballot and to discuss the needs of the organization from a governance perspective.

KCFB relies on a 5-person nominating committee composed of non-Directors. The organization seeks nominating committee members to provide diversity in geography, age, experience and gender, as well as size and type of farming operations. The committee is encouraged to seek the same in candidates to place on the ballot for election to the organization's governing Board.

2022 elections will be the first since the Board of Director's amended the organi-

zation's bylaws to allow for at-large elections. Previously Directors were elected according to geographic Districts comprised of 3 or 4 townships. The change was made to encourage more farmers and farmland owners to seek seats on the governing Board.

Up to 5 Directors will be elected for three-year terms from ballots mailed to regular voting (farmer and farmland owner) members in May. At the time of this writing, the Nominating Committee is considering up to 7 candidates to be placed on the ballot to fill those five seats. When mailed in late May to voting members (farmers and farmland owners) ballots will contain biographical information on each candidate seeking election.

## FARM FACTS

The average age of an American farmer is 58, up 1.2 years in half a decade. The average age of an organic farmer, meanwhile, is 52.

### KANE COUNTY FARM BUREAU BOARD ATTENDANCE JANUARY 2022 THRU DECEMBER 2022

	JAN	FEB	MAR	APR	MAY	JUN	JULY	AUG	SEP	OCT	NOV	DEC
C. BRADLEY	X	X	X	X								
B. COLLINS	X	X	X	X								
C. COLLINS	X	X	X	X								
J. ENGEL			X	^	X							
G. GAITSCH	*	X	*	X								
B. GEHRKE	*	X	X	X								
W. KECK	X	X	X	*	X							
M. KENYON	X	X	X	X								
K. KETTLEKAMP	X	*	X	X								
D. LEHRER	*	*	*	*								
A. LENKAITIS			*									
N. LONG	*	*	*	X								
D. PITSTICK	X	X	X	X								
W. SCHNEIDER	X	X	X	X								
J. WHITE	X	X	X	X								

\* Attendance by electronic means. ^ Attending IFB Leaders to Washington program.

## Kane County Farmer

KANE COUNTY FARM BUREAU PUBLISHED MONTHLY

Steven J. Arnold, Editor

Audre Pack, Bookkeeper

Elizabeth Polovin, Member Services Coordinator

Kelcee Miller, Development & Ag Literacy Program Coordinator

Alice Macha, Communications Coordinator

Sindhu Saveen, Membership Assistant

OFFICE: Randall Rd. between Routes 64 & 38

Address: 2N710 Randall Rd., St. Charles

PHONE: 630-584-8660

info@kanecfb.com www.kanecfb.com

OFFICE HOURS: 8:30-4:30 Monday through Friday

(USPS No. 289700)

POSTMASTER: Send address changes to Kane County Farmer 2N710 Randall Rd., St. Charles, IL 60174

Periodical Postage • Paid to St. Charles, IL 60174  
Year Subscription: \$2.00

■ DISTRICT 1  
Aurora, Sugar Grove,  
Big Rock Twnshp.

Nan Long  
11461 E. County Line Rd.  
Big Rock, IL 60511  
815-693-7214

Donna Lehrer  
7S027 Jericho Rd.  
Big Rock, IL 60511  
630-556-3476

William Keck  
P.O. Box 281  
Sugar Grove, IL 60554  
(630) 466-4030

■ DISTRICT 2  
Kaneville, Blackberry,  
Gen./Bat. Twnshp.

Bill Collins  
1125 Lewis Rd.  
Geneva, IL 60134  
630-484-6852  
Karl Kettelkamp  
47W407 Main Street Rd.  
Elburn, IL 60119  
630-365-2713

Joe White  
President  
47W727 Main St. Rd.  
Elburn, IL 60119  
630-878-1726

■ DISTRICT 3  
Virgil, Campton,  
St. Charles Twnshp.

Andrew Lenkaitis  
6N707 Corron Rd.  
St. Charles, IL 60175  
630-513-9980

Chris Collins  
1143 Anderson  
Elburn, IL 60119  
630-934-4642

Dale Pitstick  
2N118 Pouley Rd.  
Elburn, IL 60119  
630-816-0223

■ DISTRICT 4  
Burlington, Plato  
Elgin Twnshp.

Beth Gehrke  
12N860 US Hwy. 20  
Elgin, IL 60124  
847-697-2538

Mike Kenyon  
Secretary/Treasurer  
1250 E. Main St.  
South Elgin, IL 60177  
847-741-1818

Craig Bradley  
37W791 Orchard Lane  
Elgin, IL 60124  
847-888-2380

■ DISTRICT 5  
Hampshire, Rutland,  
Dundee Twnshp.

Joe Engel  
15N720 Walker Rd.  
Hampshire, IL 60140  
847-347-5561

Gerald Gaitsch  
10613 Brittany Ave.  
Huntley, IL 60142  
847-669-2003

Wayne Schneider  
Vice President  
721 Lindsay Lane  
West Dundee, IL 60118  
847-428-0488

# Entrepreneurs needed to rise to the challenge

The Farm Bureau Ag Innovation Challenge is a national business competition that showcases U.S. startups developing innovative solutions that address challenges facing America's farmers, ranchers and rural communities. Launched in 2015, The Challenge was the first national business competition of its kind focused exclusively on rural entrepreneurs.

Now in their ninth year, the American Farm Bureau Federation in partnership with Farm Credit, are looking to identify the top entrepreneurs who are addressing both traditional challenges farmers face on their operation, such as access to labor, optimizing yield and reducing operating costs, to

entrepreneurs who are addressing new challenges facing farmers and rural communities.

Farm Bureau will award \$165,000 in startup funds to ten businesses, culminating at a live pitch competition and networking event at the AFBF Convention in January 2023 in San Juan, PR. The Ag Innovation Challenge Winner will be awarded \$50,000 in startup funds provided by sponsors Farm Credit, Bayer Crop Science, John Deere, Farm Bureau Bank and Microsoft.

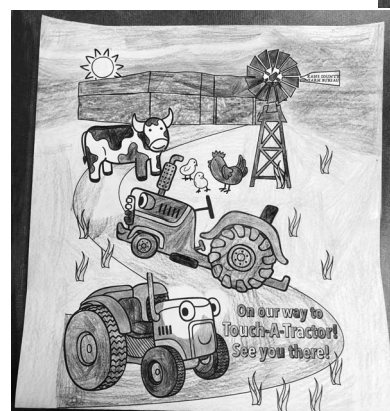
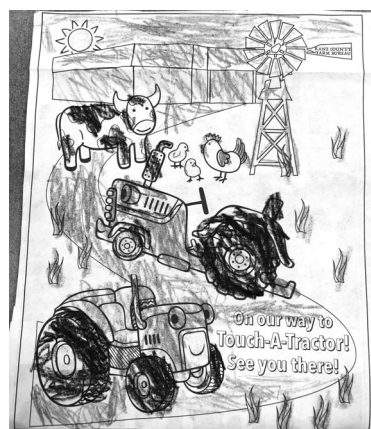
To find out more and submit an application, go to <https://fb.submittable.com/login?returnUrl=%2Fsubmit%2F211770%2F2023-farm-bureau-ag-innovation-challenge>.

## YF coloring contest

Thank you to all the contestants who participated in our Young Farmers sponsored coloring contest in observance of National Agriculture Day on

March 22 and National Agriculture Week on March 20-26, 2022. This contest was open to all children ages 3 through 11. Categories were as follows: Age 3-5, Ages 6-8, and Ages 9-11. Entries were judged on originality, true-to-lifeness, and neatness. Prizes and awards were given for 1st, 2nd, and 3rd places in each age category.

The 2022 Young Farmer Coloring Contest 1st place winners of the respective age groups are: 4 year old, Alice B. (3-5 age group), 8 year old Reagan B. of Sugar Grove (6-8 age group), and 11 year old Gabe B. of Sugar Grove (9-11 age group).



**Winners of Ages 3-5** are: Alice B. (4) of Hampshire, Matthias C. (5) of Aurora, and Julianna G. (5) of Aurora

**Winners of Ages 6-8** are: Reagan B. (8) of Sugar Grove, Bentley C (8) of Sleepy Hollow,

and Sofia M. (6) of Aurora

**Winners of Ages 9-11** are: Gabe B. (11) of Sugar Grove, Moxie B. (11) of Pingree Grove and MaKenna (10) of Gilberts.

Winners have been notified and received gift certificates.



The United States grows the most strawberries of any country in the world, producing around 1.12 million tons in 2019. Most were grown in California, followed by Florida.

On average, a dairy cow produces 6.3 gallons of milk a day and 46,000 glasses of milk a year. It takes 350 squirts to make a gallon of milk.

**FARM FACTS**

## Thank you...

The prize winner in our Touch-A-Tractor Pedal Tractor Drawing was one year old Bianka Ochoa of Aurora. Bianka and her sister Giana (3), visited Touch-A-Tractor with their mom, Dalila Alegria, on the cold, drizzly afternoon of Friday, April 8th.

Congratulations, Bianka and family, and enjoy your new ride!



## ALOT helps ag leaders today!

Illinois Farm Bureau® (IFB) created Agricultural Leaders of Tomorrow (ALOT), an agricultural leadership development program designed to give participants a head-start on tackling tomorrow's leadership responsibilities.

25 IFB members representing 17 counties have successfully completed the 43rd ALOT program. Brett Dienst and Kelcee Miller represented Kane County. The 2022 ALOT sessions were held at Starved Rock, Springfield, DeKalb, Bloomington and via Zoom. To date, over 1200 participants have graduated from the program.

The eight-week training pro-



Pictured from left to right are Steve Koeller (IAA District 15 Director), Brett Dienst, Kelcee Miller, and Steve Stallman (IAA District 16 Director).

gram allows participants to study and develop leadership skills in the areas of communication, political process, agri-

cultural economics, and global issues. The 2023 ALOT program will be held in Central Illinois.

## FFA Acquaintance Day at NIFB

On Thursday, March 24, 2022 members from the Kane County Young Farmers committee and FFA members from Central and Kaneland High Schools gathered at the Northern Illinois Food Bank for their annual FFA

Acquaintance Day. The groups worked together to sort, re-label, and repackage food for our hungry neighbors. In total,

the group packed 3,964 pounds of food providing over 4,970 meals for our hungry neighbors in Northern Illinois!



## Get your soil ready for spring

Kane County Farm Bureau offers soil testing to its members at a discount, a great service to make sure your soil is ready for spring planting. Three different tests are available and results are sent by e-mail or mail directly to you. For a soil test form, visit [www.kane.cfb.com](http://www.kane.cfb.com) and click on benefits and services, or pick one up at the KCFB office. Deliver samples to Kane County Farm Bureau with payment. Prices listed are for Kane County Farm Bureau members, non-members, and PLUS status members. Ask us how to save even more when you upgrade your mem-

bership to a PLUS status.

Call 630-584-8660 for more details.

**Why test your soil?** Soil in its natural state is rarely fertile enough for the best growth of plants. Usually it is necessary to replenish the earth's store of plant nutrients to obtain the most vigorous lawn, the most abundant and brilliant flowers, the prettiest trees and shrubs and the greatest yield of fresh veggies.

**When is the best time to test soil?** Proper sampling is important to obtain accurate results. Samples can be taken any time during the warmer

months, when soil temperatures are at least 55 degrees. If the soil is too wet to spade, rototill or hoe, it is generally too wet to take a sample. On the other hand, extremely dry soil should not be sampled either.

**How often should I test?** Ideally, soil should be tested every 3-5 years, more frequently with intensive use. Try to sample during the same season each time for the best comparison.

**Why does Farm Bureau provide this service?** Kane County Farm Bureau was founded in 1912 as the Kane County Farm Improvement Association, to help farmers improve their production practices and increase the fertility and productivity of their soil. This program is an extension of that. It helps you take the guess work out of gardening!

Additional help for your lawn & garden is available through the University of Illinois Master Gardeners. Contact them at 630-584-6166 or visit their office at 535 S. Randall Rd., St. Charles.

### SOIL TEST COSTS

#### Basic PH Test

\$20 per sample for members, \$30 non-members  
This test checks for soil pH, phosphorus, and potassium.

#### Lawn/Garden Test

\$30 per sample for members, \$40 non-members  
This test includes the basic test plus organic matter and recommendations on amount and timing of fertilizer.

#### Lawn/Garden Plus

\$50 per sample for members, \$60 non-members  
This test includes the Lawn & Garden test plus nutrients, iron, zinc, manganese, copper, sulfur and boron.  
This test also includes recommendations.

## AG LITERACY CORNER

By Kelcee Miller, Development & Ag Literacy Program Coordinator



### Hello Kane County!

As I have mentioned before in previous columns, I recently had the opportunity to participate in Illinois Farm Bureau's Agricultural Leaders of Tomorrow (ALOT) leadership program. This eight week course was an amazing experience. I revert to previous columns I have written about being a goal-oriented person and wanting to continue to step outside my comfort zone. Well, little did I know this leadership program would be the perfect fit to help me regain my focus towards my goals, reaffirm my confidence, as well as learn new things about the agriculture industry along the way and make some great friendships too.

I will admit when my manager first encouraged me to apply to the program and I looked over the brochure, I was thinking that it was a little intimidating. There were topics like "agricultural economics" and "political involvement" that were not something that I necessarily had an interest in and/or knew slim to none about. After

conversing with my manager, I decided to push past my fears and apply for the program, which then led to an interview to see if I would be a good candidate for the ALOT class of 2022 ... well I'm sure you can put the pieces together of how the story goes, otherwise I would not be here today sharing my story!

With both fears and excitement about the adventure ahead, I jumped into the ALOT program with both feet. Those who have participated in this program before know that the only way to get the most out of this experience is to do just that. Right from the get-go, we were plunged into what would be a thrilling ride for the next 8 weeks! We learned about a variety of topics in the world of agriculture, professionalism, as well as ourselves as individuals. I will never forget our first gathering at the Starved Rock Lodge where we learned all about professionalism and table etiquette. I didn't

realize all of my "bad" table etiquette until I learned the proper way to place and pass items on the table! Over the course of the eight weeks we all spent together we had the opportunity through professional luncheons and dinners to put what we learned from day one into practice as we sat down with other keynote speakers, county managers as well as legislators!



Kelcee Miller and Brett Dienst are recent graduates of IFB's ALOT program.

Through this program we had the opportunity to meet other Farm Bureau members passionate about agriculture as well as meet some of the key players in the Illinois Farm Bureau family, which was pretty neat too! Every week for the eight weeks our group gathered in different locations in Northern Illinois such as the Starved Rock Lodge in Utica,

Springfield, DeKalb County Farm Bureau, Bloomington-Normal, and via Zoom. Whether we met in person or via Zoom, our group always had plenty of laughs and smiles to go around with a side of learning and growing woven in.

One of my many highlights from the ALOT program came during the last session together when we had the opportunity to hear from Bryan Dodge. If you've never heard of him, please do yourself a favor and Google him. I cannot put my finger on what it was exactly, but when he spoke to us that Thursday afternoon in Normal, I swear there was magic in the room. Dodge had the ability to speak to us and see the potential inside all of us that we didn't even know we had. I don't want to spoil all of the fun if you happen to look him up, read his books, listen to his podcasts, and/or utilize his other resources, but listening to him speak was the final sendoff we all didn't know we needed that day. He taught us new ways of thinking, acting, and managing our time. Dodge also gave us as a group and individually, challenges. I believe over the course of my

next few columns, I will share more of his lessons in depth as I continue to learn and develop new skills and put more of his teachings into practice.

I cannot say enough great things about the Illinois Farm Bureau ALOT program. I absolutely loved this opportunity, the friendships made, and the knowledge gained throughout! I want to thank the Kane County Farm Bureau for supporting and encouraging me to step outside my comfort zone and learn more about the field of agriculture as well as myself! And a huge thank you to the Illinois Farm Bureau for continuing to offer this program and to the amazing training and development staff for leading the way! I think I can speak for my entire class when I say we truly learned ALOT (no pun intended) and will miss our weekly sessions greatly!

If you are interested in the next ALOT program please feel free to give us a call any time, M-F 8:30am-4:30pm at 630-584-8660. Until then, continue to step outside your comfort zones and learn something new every single day!

Happy May!

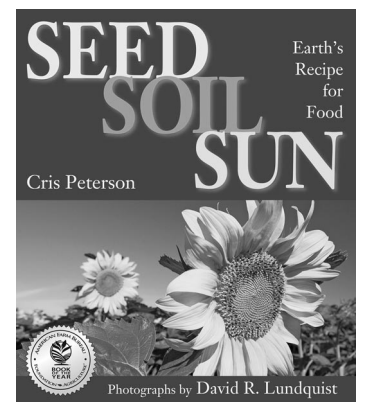
## Book of the month

Last month we celebrated our 16th Annual Touch-A-Tractor event and a new activity we introduced this year was Story Time that took place every hour on the hour (11am-3pm) on Saturday and Sunday. As you may recall from previous Farmers we had a list of 19 ag literacy books for our volunteers to read to the children and their families over the course of the two days!

One of those books was a perfect fit for this month's Farm, Facts, & Fun theme of planting. The May book of the month is *Seed, Soil, Sun – Earth's Recipe for Food* by Cris Peterson. The three key ingredients needed to grow the food we eat every single day year-round are seed, soil, and sun. Peterson explains the process easily for readers to follow and understand how seeds, soil, sun, air and water all work together as Earth's recipe to create the foods people and animals eat. And by keeping our animals fed, they can continue to provide us with milk, meat, eggs, and other products.

Peterson describes in detail the process seeds undergo before they sprout into a plant and the makeup of the soil by explaining how "each handful of soil contains more living things than all the human beings

on Earth." In addition, Peterson explains the roles of other amazing creatures that live in the soil and their roles for assisting in keeping the soil fertilized and maintained so plant roots can grow and breathe. The final key ingredient is the mighty sun. Did you know that plants are the only living things that can use the sun's energy to grow? To learn more about how seeds, sun, and soil work together to create tasty foods



Seed Soil Sun – Earth's Recipe for Food by Cris Peterson

and products we all know and love, come on out to the Kane County Farm Bureau's FREE KCFB Library and check out *Seed, Soil, Sun – Earth's Recipe for Food*. The Kane County Farm Bureau Library was made possible by Bob Konen and Dean Dunn, and later supported by the Bob Konen Family.

## We can help protect your business with insurance you deserve



Bob Effner  
Agency Manager  
St. Charles  
630-584-0001



Bobbi Boston  
St. Charles  
630-485-5155



Keith Eakins  
St. Charles  
630-762-1324



Kelly Landorf  
St. Charles  
630-762-1328



Jeff Jones  
St. Charles  
630-492-5293



Norma Grathoff  
St. Charles  
630-492-5324



Donna Tonovitz  
St. Charles  
630-549-7694



Orazio Difruscolo  
St. Charles  
630-549-7696



Ashraf Gerges  
Aurora  
630-898-3750



Edward Stuehm  
Geneva  
630-845-8245



Deb Slob  
Geneva  
630-208-0890



Michael O'Brien  
Geneva  
630-762-0852



Victor Alvarado  
Elgin  
847-742-0003



Luke Fawkes  
Elgin  
847-742-0002



Sherry Lochen  
Elgin  
847-742-0004



Bob Kearns  
Elgin  
847-888-3200



Bob Riedel  
West Dundee  
847-428-5434



Gary Bolger  
West Dundee  
847-531-6110



Sherri Schramer  
Elburn  
630-365-9500



Dominick Davero  
Elburn  
630-365-3737



Charles Quick  
Hampshire  
847-683-2100



David Berreles  
Hampshire  
847-683-2100



Dan Cooper  
Sugar Grove  
630-466-9600



Ted Schuster  
Sugar Grove  
630-466-9600

Commercial insurance policies issued by COUNTRY Mutual Insurance Company®, Bloomington, IL. "COUNTRY Financial®" is the marketing name for the COUNTRY Financial family of affiliated companies (collectively, "COUNTRY"), which include COUNTRY Life Insurance Company®, COUNTRY Mutual Insurance Company®, and their respective subsidiaries, located in Bloomington, Illinois. 1220-509HC\_20503-1/6/2022



Kane County Farm Bureau  
**FOUNDATION**  
*for the future of farms & food*

**May 12**  
**Drive Thru BBO**  
**Fundraiser**

**Please reserve:**

Pork chop dinners     Chicken quarter dinners  
 Pork chop/chicken combo dinners

**Please enclose payment of \$16 per dinner. Make checks payable to Kane County Farm Bureau Foundation**

Name \_\_\_\_\_

Address \_\_\_\_\_

City, State, Zip \_\_\_\_\_

Visa / MC \_\_\_\_\_ Exp. date \_\_\_\_ / \_\_\_\_

CRV \_\_\_\_\_ Phone (\_\_\_\_) \_\_\_\_\_

**Return to: KCFB Foundation  
2N710 Randall Rd., St. Charles, IL 60174  
or call 630-584-8660.**



# Farm Facts @ Fun

Compiled by Kelcee Miller, Ag Literacy Coordinator



## Cheesecake stuffed strawberries

Help celebrate National Strawberry Month with this elegant treat that will be sure to satisfy any sweet tooth!

### Ingredients

- 1 lb large strawberries
- 1 (8 oz) package cream cheese, softened
- 1/2 cup to 1 cup of powdered sugar (sweeten to your liking)
- 2 teaspoons vanilla extract
- 1/4 cup graham cracker crumbs

### Instructions

Using a paring knife, hull out the strawberries and then slice a small end off the strawberry and set aside.

In a mixing bowl, combine the cream cheese, powdered sugar,

and vanilla

Put the cream cheese mixture in a piping bag fitted with a star tip or in a Ziploc bag with the tip snipped off.

Pipe the cream cheese into the center of the strawberries and then sprinkle on graham cracker crumbs.

Let the strawberries sit in the fridge for about 30 minutes to allow the cream cheese to firm up before eating.

Enjoy!

Find this recipe & more here: <https://jenaroundtheworld.com/cheesecake-stuffed-strawberries/>



## Watch us grow!



Similar to when you're planting your garden, the factors farmers consider when planting include weather, soil temperature, soil moisture, seed depth, plant population, seed spacing ... the list goes on. However, farmers can control many of those factors from the cab of their tractors.

If you were to sit in our tractor cab during

spring planting, you would see four screens that show:

- 1. Field map:** We upload all our field maps to an iPad with guidance lines. This allows us to double-check that we are using the right field map on the planter monitor before planting the field.
- 2. Tractor functions:** Similar to your car's "check engine" light, when something goes wrong on the tractor, this is the screen that tells us so.
- 3. Planter activity:** This monitor controls the auto-steer and allows us to control seed spacing, plant population, and seed to soil contact – all imperative to getting a plant to grow.
- 4. Insecticide placement:** Based on what the soil needs in specific areas, we can control how much insecticide is placed in furrow and on the soil and where as we move through the field.

Find out more about Illinois farming from Illinois farmers – <https://www.watchusgrow.org>

## Grow a grass head

### Materials

- Old tights/stockings
- Some compost or soil
- Grass seeds
- Rubber band or thread
- Googly eyes & felt for decorating
- A pot for your grass head to sit in

### Directions

Put 2-3 generous tablespoons full of grass seeds at the bottom of your tights.

Next add a handful of soil until you have a nice sized ball and then tie the bottom of the tights to keep ball in place.

Pinch a "nose" by twisting,

wrap and tie in place with a small rubber band or thread.

Glue on googly eyes and create a mouth with felt

Place in a yogurt cup or something similar in pot size. Add water to the bottom of the pot and the tights will soak up the water. Place in a sunny spot & watch the hair grow on top of the head!

Give a trim if the luscious locks get too long!

For more ideas and additional guidance, check out: <https://www.redtedart.com/kids-crafts-grass-heads/#comment-117441>



What did one flower say to the other? *What's up bud?*  
 What kind of flower grows on your face? *Tulips!*  
 Why are flowers so good at problem solving? *They know how to nip it in the bud!*  
 What do you call a flower that runs on electricity? *A power plant!*  
 These jokes & more found at: <https://kidadl.com/articles/best-plant-jokes-that-youll-be-very-frond-of>

## Time for planting

Y	S	D	W	Y	E	O	N	W	V	H	V	Z	S	V	S	K	U	I	P	Bloom
Q	Z	Z	U	H	G	V	O	S	E	P	S	N	L	V	S	Z	Y	R	J	Corn
N	B	N	V	E	J	O	Z	H	S	A	O	E	U	K	A	O	F	A	L	Data
B	M	B	P	O	T	I	L	N	T	S	T	V	R	S	R	J	X	X	S	Equipment
X	L	U	A	L	Q	I	O	O	A	W	X	H	P	F	G	S	P	S	T	Fresh
K	E	O	K	M	A	R	L	E	N	G	M	R	E	L	S	D	L	S	O	Grass
Q	T	O	O	S	C	N	S	L	N	H	O	O	U	R	O	E	A	S	L	Greening
S	W	O	R	M	O	G	T	I	E	U	C	B	V	T	S	E	N	P	P	Hands-Free
E	G	I	W	N	R	I	N	E	T	T	E	E	N	K	Z	S	T	R	T	Planter
Q	T	M	R	Y	N	E	I	S	R	W	A	U	T	A	W	U	E	I	S	Planter Maps
S	Q	I	E	W	E	I	W	O	D	A	I	S	B	I	C	I	R	N	E	Planting
F	O	U	J	R	U	S	A	T	N	E	M	P	I	U	Q	E	M	G	T	Rows
W	V	Y	G	H	A	N	D	S	F	R	E	E	F	P	P	L	A	X	F	Satellite
U	S	D	B	T	R	A	C	T	O	R	S	D	L	A	U	A	P	A	N	Seeds
R	C	M	U	E	M	A	E	S	O	I	L	A	T	O	L	T	S	J	H	Seasons
Y	J	H	D	V	A	H	R	I	B	X	N	S	X	I	B	Q	M	I	S	Soil
J	Q	A	G	P	U	N	J	M	G	T	G	U	P	Q	H	I	E	E	F	Soybeans
X	T	W	O	E	A	U	S	N	I	S	R	E	W	O	L	F	N	U	S	Spring
A	J	U	X	Q	P	O	V	N	Q	W	K	G	U	E	Z	J	R	U	Z	Sprouts
K	B	D	B	P	G	G	G	I	D	B	D	F	N	G	K	H	H	A	Y	Sunflowers
																				Technology
																				Test Plots
																				Tractors
																				Weather

Name \_\_\_\_\_  
 Address \_\_\_\_\_  
 City \_\_\_\_\_ State \_\_\_\_\_ Zip \_\_\_\_\_  
 Telephone (\_\_\_\_) \_\_\_\_\_ Email \_\_\_\_\_ Age \_\_\_\_\_

Return to: Kane County Farm Bureau, 2N710 Randall Road, St. Charles, IL 60174 by May15, 2022 to be entered in our drawing for a fun prize.

Prize must be picked up at the KCFB office within one month of newspaper publication.

## May is ...

National		
Lemonade Day	1	Hamburger Day 28
Teacher Day	3	Learn About Composting Day 29
Orange Juice Day	4	Macaroon Day 31
Coconut Cream Pie Day	8	Skin Cancer
Shrimp Day	10	Detection & Prevention Month
International Hummus Day	13	Military Appreciation Month
Apple Pie Day	13	Barbecue Month
Buttermilk Biscuit Day	14	Egg Month
Chocolate Chip Day	15	Hamburger Month
Barbecue Day	16	Salad Month
Cherry Cobbler Day	17	Salsa Month
Walnut Day	17	Strawberry Month
Devil's Food Cake Day	19	
Eat More Fruits & Vegetables Day	21	
Vanilla Pudding Day	22	
Taffy Day	23	
Asparagus Day	24	
Brisket Day	28	

## Congratulations

**Kristie Decker** of Huntley is last month's winner. Her name was chosen from the entries received for correctly completing last month's Word Search Puzzle. For her participation, she receives a fun prize. Thank you, Kristie, for reading the *Kane County Farmer* and continue to watch each month for more great opportunities from the Kane County Farm Bureau.



This 1954 Farmall Cub tractor hosted a lot of happy kids at April's Touch-A-Tractor.

# Scholarships

(continued from page 1)

Genoa. This honor is reserved for the high school senior with the most outstanding combination of scholastics, activities, goals, and ACT score.

Colin attends Genoa-Kingston High School and Kishwaukee College and plans to attend University of Missouri. His high school activities include membership in the student council, football, basketball, FFA and membership in the National Honor Society. He is involved in operations on the family farm and operated a pumpkin patch with siblings and cousins.

He thinks his heart is in the field where he was raised and plans to study agribusiness and management, a goal that will be greatly helped by this KCFB Foundation President's Scholarship.

## Danforth, IL resident recipient of Rodholm Charitable Trust Veterinary Scholarship

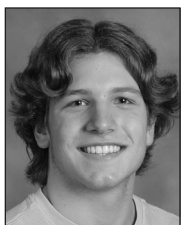


**Tess Cummings**

Tess Cummings, daughter of William Cummings and Jill Brockman-Cummings of Danforth, IL is the recipient of the Rodholm Scholarship, to aid Illinois residents accepted to or enrolled in veterinary schools in the state of Illinois. The scholarship seeks to help develop the next generation of animal care practitioners.

Tess attends the University of Illinois College of Veterinary Medicine and is majoring in Veterinary Medicine and Biology. She grew up on her family's fifth generation farm, was active in 4-H and FFA, and credits these influences with making her feel that caring for animals and building relationships with their owners is profoundly meaningful. Her goal is to gather large animal medicine experience and eventually open her own practice in a rural area. She is thankful for the Rodholm Scholarship and the opportunities it provides.

## Steimel and Vandermeij awarded Buck Memorial Scholarships



**Michael Steimel**



**Willem Vandermeij**

Michael Steimel and Willem Vandermeij have each been awarded the \$1500 John Buck Memorial Scholarship for tuition and fees, in support of higher education in an agriculture related field.

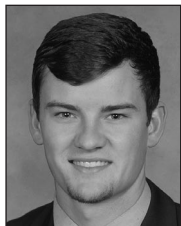
2022 marks the 21st year since the scholarship was founded, with scholarships being awarded to students in the seven county service area around the Buck Bros./J.W. Turf John Deere dealership in Hampshire. The scholarships are made possible by gifts from the family and friends of the late John Buck, who established the company in 1977.

Michael Steimel of DeKalb is the son of Dan and Paula Steimel and attends DeKalb High School. He plans to attend Oklahoma State University in the fall, majoring in plant and soil sciences. He has grown up on a third generation farm, participated in 4-H and FFA, and looks forward to opportunities in college to visit farming regions around the U.S. and worldwide.

Willem Vandermeij, son of Gerardus and Jill Vandermeij of Geneva is a student at Cedarville University in Cedarville, OH. He is majoring in computer engineering. He credits his parents' and grandparents' involvement in horticulture and plant pathology with piquing his interest in agriculture. He hopes to use his degree to program robotics for

uses such as vehicles and mechanics in farm equipment.

## 2 AGCO Parts Division Scholarships awarded To Wheaton and Jacksonville, IL applicants



**Michael Huffman**



**Amanda Stiegel**

Michael Reid Huffman of Jacksonville, IL and Amanda Stiegel of Wheaton, IL have been awarded AGCO Parts Division scholarships.

The AGCO Parts Division scholarship was started in 2017 and provides \$1,000 college scholarships annually to students who reside in Illinois and who are pursuing higher education in an agriculture related field. The scholarship is funded by the employees of AGCO Parts, Batavia, IL.

Amanda Stiegel is the daughter of Mark and Kathleen Stiegel of Wheaton and is attending the University of Illinois College of Veterinary Medicine with plans to graduate in 2023. She has done mission veterinary work in Honduras, where she helped educate local farmers, teaching them preventative medicine and animal husbandry. She wants to focus on the care of food animals.

Michael Huffman is the son of Michael and Monica Huffman of Jacksonville, IL and attends the University of Illinois College of Veterinary Medicine, where he is pursuing his doctorate. He grew up on a cow calf operation in Jacksonville, IL and his professional goal is to become a production animal veterinarian in a rural area, work with farmers and act as a liaison between producers and the community to educate on subjects like antibiotic free and free range meat.

## 2 AGCO Global Women's Network Scholarships Awarded



**Amanda Bowen**



**Celeste Cummings**

Amanda Bowen and Celeste Cummings are this year's recipients of AGCO Global Women's Network (GWN) Scholarships.

Amanda Bowen of Dunlap, IL is in her senior year at University of Illinois, pursuing her doctorate in veterinary medicine. She is the daughter of Mike and Leigh Bowen of Dunlap. Her plan after graduation is to secure an equine internship in Colorado, and eventually become a practice owner of an equine clinic.

Celeste Cummings, daughter of Will and Jill Cummings of Danforth, IL, attends Iroquois West High School in Gilman, and plans to attend Purdue University. She credits a lifelong passion for caring for animals and involvement in FFA and 4-H in fueling her desire to major in Animal Science and continue to veterinary school.

The AGCO GWN Scholarship was started in 2019 and provides a \$1,000 college scholarship annually to each of two female students who reside in Illinois and who are pursuing higher educations in agriculture related fields. The scholarships are funded by the Employees of AGCO Parts in Batavia, IL.

*Congratulations and best wishes to all our scholarship recipients*

## Villa Park resident awarded AGCO Parts Platinum Scholarship



**Valentina Poggi**

Valentina Poggi, daughter of Lawrence and Christina Poggi of Villa Park, has been named recipient of the AGCO Parts Platinum Scholarship for \$2,500. This scholarship is awarded to a student who resides in Illinois and who is pursuing higher education in an agriculture related field. The scholarship is funded by the Employees of AGCO Parts in Batavia, IL.

Poggi attends the University of Illinois College of Veterinary Medicine, pursuing a Doctor of Veterinary Medicine degree. She has learned from stints with veterinary clinics and the U of I Dairy Farm that having an educated veterinarian on a producer's team makes a big difference in production values and overall health of a dairy herd. She will use her scholarship to help supplement the many hours of unpaid internships that are part of her learning experience.

## Chuck Swanson Memorial Scholarship



*The Chuck Swanson Memorial Scholarship was established by the family and friends of the former Farm Bureau Director and long-time volunteer.*

The Kane County Farm Bureau Foundation has named Jessica Dumoulin of Hampshire as the recipient of the \$1,500 Chuck Swanson Memorial Scholarship. Jessica is the daughter of Pat and Lisa Dumoulin.

The Chuck Swanson Memorial Scholarship was established by the family and friends of the former Farm Bureau Director and long-time volunteer to provide awards for students residing in Kane County, pursuing a degree in an agriculture-related career field.

Jessica is attending Northern Illinois University, pursuing a degree as a mechanical engineer. Her hands-on participation on the family farm has allowed her to see the significant technological advancements in producing food. She plans to use her degree with an organization that produces heavy machinery used in agriculture production.

## \$1,500 KCFB FOUNDATION Scholarships

Seven students are recipients of KCFB Foundation General Agriculture Scholarships.



**Mitchell Majewski**

Mitchell Majewski of St. Charles, son of Mark and Amy Majewski, is a freshman attending Western Illinois University, pursuing a degree in Ag Business. He graduated St. Charles East High School in 2020, where he was team captain of the football and lacrosse teams. He credits his work on a row crop and dairy farm and knowledge of welding with fueling his desire to start

his own row crop operation in the future.

Kyla Baldrige of Elburn, daughter of Eric and Christine Baldrige, attends University of Wyoming, majoring in Rangeland Ecology & Watershed Management. She plans to use her experience in local FFA and on farms to help find solutions to livestock predation and overgrazing by researching and implementing management plans.



**Ella Follman**

Ella Follman, daughter of Daniel and Julie Follman of Sycamore, graduates Sycamore High School this year. She plans to attend the University of Wisconsin Stevens Point, studying Wildlife Ecology and Biology. She believes that participation in any of the agricultural fields of work is crucial to the world. She hopes to monitor wildlife populations and regulate land and resources.



**Shelby Hannula**

Shelby Hannula, daughter of Jim and Laurie Hannula of Elburn, attends Illinois State University, pursuing a degree in Agriculture Business. She credits her upbringing in a rural area and involvement in FFA in her wish to work with farm credit loans, machinery or feed sales to help farmers continue doing what they love, and is thankful for her scholarship.



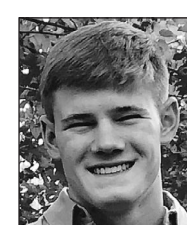
**Cheyenne Judd**

Cheyenne Judd, daughter of Bradley and Michelle Judd of Cortland, graduates Sycamore High School this year and looks forward to attending Black Hawk College in pursuit of her associate degree. She plans to then attend a four year college and decide on a degree in agribusiness or children's special education.



**Kayleigh Kuschewski**

Kayleigh Kuschewski of Batavia, daughter of John and Susan Kuschewski, graduates Batavia High School this year and will attend Illinois Wesleyan University. She credits experience on her grandfather's farm with her interest in agriculture. She plans to major in Biology or pre-med.



**Grant Baldrige**

Grant Baldrige of Elburn is the son of Eric and Christine Baldrige. He attends Montana State University and is pursuing a degree in Electrical Engineering. His interest in agriculture was fueled by experience in horticulture and FFA. He wants to use his degree to develop and update agricultural technology, making the management of day-to-day agriculture operations easier.

## \$1,000 KCFB General Scholarship



**Savanna Follman-L'Huillier**

Savanna Follman-L'Huillier of Hampshire, daughter of Leanne Follman, will graduate Burlington Central High School this year. She plans to attend University of Wisconsin Stevens Point, and pursue a Nursing degree with a focus on pediatric gastroenterology.



**Planting the unofficial start to the new year**

Spring upstages January in delivering a fresh start, a contagious feeling when flowers bloom, more mushrooms pop and calves frolic through green-pastures. Warming temperatures recharge motivations to grill out, eat healthier and take walks. We again experience the satisfying exhaustion of days spent in fresh air and sunshine.

I welcome this season when my family acts on our resolution to grow better crops in better ways, making this month a more ideal start to the New Year than

January 1. In fact, I'll stay up past midnight more in this single spring planting season than the last several New Year's Eves combined.

Since harvest, our farm has serviced the planters and tractors, stocked seed, prepared the planter maps and loaded seeding prescriptions in the monitors. We studied last year's harvest data, planned new test plots, researched soil-improving microbials and prepped the planters to give millions of seeds equal opportunity to produce a better crop than the last.

Thousands of farm families like ours across Illinois will work in windows of favorable weather and ground conditions to plant corn, soybeans and other crops that cover about 75% of the state's land mass. Planting season

re-energizes the state's quiet landscape, painting this blank canvas with seeds to grow golden tassels and bushy soybean plants. In our gardens, seeds promise feathery carrot tops and scratchy squash vines. Our daughter aims for sky-reaching sunflower blossoms for an FFA and 4-H project.

Technology has introduced the art of satellite-guided rows and picket-fence stands. The tractor drives itself hands-free, allowing corn to sprout in

straight rows at precise spacing like posts on a yard fence. Ideally, the plants emerge at the same time, courtesy of ground pressure sensors that help sow seed at consistent depths. The planter operates via satellite guidance in the absence of a row marker, the steel "arm" that once reached out to etch a line in the soil for the tractor to follow the next pass.

In many ways, the process of planting represents an act of

faith and a belief in tomorrow. When the weather threatens or field conditions seem too ideal to stop, we may experience today and tomorrow in the same work session.

*About the author: Joanie Stiers farms with her family in West-Central Illinois, where they grow corn, soybeans, wheat, hay and cover crops and raise beef cattle, backyard chickens and farmkids.*

**What's new at COUNTRY?**

**St. Charles Agency, Bob Effner, Agency Manager**

Congratulations to **Victor Alvarado**, who has been named the March Rep of the Month in the COUNTRY Financial® St. Charles/Elgin Agency, as announced by Agency Manager,

Robert J. Effner, Sr., CLF®, LUTCF. Victor is a great asset to our team and is dedicated to providing tangible plans for addressing the immediate and long term insurance needs of his clients through our Auto, Home, Farm, Life, Business, and Retirement products and servic-

es. Let Victor's expertise help you! You may reach Victor at 847-742-0003, or victor.alvarado@CountryFinancial.com, or https://representatives.CountryFinancial.com/Victor.Alvarado/.

Congratulations, Victor!

**Welcome to the next level**

This month we welcome the following KCFB members who joined our organization or reclassified their membership in January to \*Regular or Professional Status:

**Regular Members**  
**Scott Srail St. Charles**

We remind you of added perks that accompany your new Regular member or Professional Status and thank you for supporting KCFB's efforts at advocacy, education and hunger relief:

- Professional networking

opportunities & engagement with farmers

- Agriculture, farm & food news delivered to your door
- New subscription to FarmWeek, the largest weekly agriculture newspaper
- Access to FarmWeekNow.com
- KCFB voting rights & ILFB delegate opportunities
- Continuing subscription to the Kane County Farmer newspaper
- Free annual registration at one of 7 statewide conferences
- 302,000 member discounts,

including Ford, Lincoln, John Deere, Case IH, restaurants, hotels & travel

- Discounts at the KCFB Country Store on in-house sales of featured local foods

\*KCFB Regular membership is required of all who join our association that have a vested interest in and receive income from the production of farm products as an owner or operator of a farm business. Professional Membership status is available for all those employed in agriculture-related occupations, even with no farm income. If you are interested in "next level" membership and the benefits it carries, please contact KCFB in St. Charles at (630) 584-8660.

**Recruiter of the Month**

Each month we honor the person who signs the most members into our organization. This month, the honor goes to Felipe Rocha! Felipe has been a COUNTRY Financial Representative since August, 2011. His office



**Felipe Rocha**

is located at 541 N. Lake Street, Aurora and may be reached at: 630-897-7746.

Thank you for your continued support of the Kane County Farm Bureau and congratulations on your success!

side of St. Charles. Call Bob, Shannon, or Laurie at 630-377-7797 to schedule interview.

**CUSTOMER SERVICE** – 30-35 hours weekly, M-F. Applicant must be a computer literate, self-starter, with pleasant voice and manner, Some travel possible. Office located east side of St. Charles. We offer vacation pay, self-directed savings plan, and partial tuition reimbursement. Perfect position for stay-at-home-Mom or college student. Call Bob or Laurie at 630-377-7797 to arrange interview.

Want to buy – vintage & used tools. Also, we do cleanouts. Call Chris: 630-550-7182

**FOR SALE**  
Vintage New Deal manure spreader complete unit with approximately 8' long x 3.5' wide x 2' tall material hopper. Complete pull behind spreader with all parts and large tractor tires. Some minor repairs needed to place back in service. Overall good condition. Free delivery available within 25 miles. Located in Wayne, IL. Available for inspection by appointment only. Asking price \$200 or best offer. Contact John for more info or pictures at: 781-795-6454 (mobile) or jdonleavy@gmail.com.

**CLASSIFIED ADS**

**CLASSIFIED AD RATES**  
Classified advertising rates: 20 cents per word/\$20 minimum (60 words or less). **DISCOUNTS** for members: Associate members, 20%; Voting members, 30%; **PLUS** members, 40%. Advance payment requested. Ads due by the 15th of every month for the next issue. No advertising (classified or display) for financial or insurance services will be accepted. Call 630-584-8660.

**WANTED**

Love to sew? Looking for a creative team member to join our St. Charles custom sewing studio. Flexible, part-time hours to fit your schedule. Perfect for retiree, home maker, or student. Training provided. Call Susan at 925-336-0934 to apply.

Wanted – farm employee. Operate equipment. Some experience necessary. Full and Part time. CDL helpful. Call: 630-951-9238

HELP WANTED for **AWARD COMPANY** – JACK OF ALL TRADES NEEDED to assemble wood plaques and awards. Prefer 20-30 hours weekly; no weekends. Great for retiree or part-time student. Office located east

**Thanks to our donors**

The KCFB FOUNDATION offers its sincere appreciation to the following for their contributions to our hunger relief, community service, education, and scholarship programs. Names shown are contributions received March 16 – April 15, 2022.

Donor	Beneficiary
Deborah Stob in Memory of Scott Lehrer	KCFB Foundation
Christine & Eric Baldrige	KCFB Foundation Scholarships
James & Deloris O'Connell	KCFB Foundation



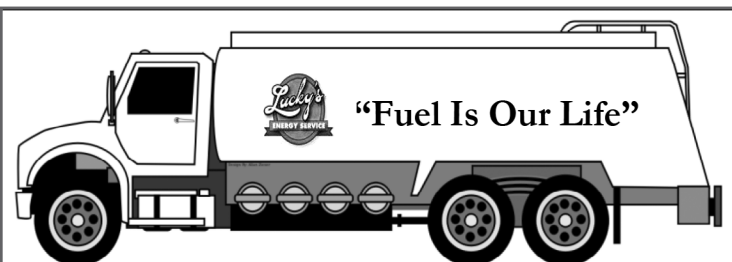
One bushel of wheat weighs about 60 pounds and contains about 1 million individual kernels. It can yield about 42 pounds of white flour, 60 pounds of whole wheat flour, about 45 24-ounces boxes of wheat flake cereal, or about 42 pounds of pasta. More than 45 million acres of cropland was used to grow wheat in 2019.

**Get your tickets now for this fun ride**

Tickets are now available for the KCFB FOUNDATION's 2022 Vintage Truck Raffle. The Grand Prize this year is a 1971 Chevy C/10. Tickets are \$20 each, or 3/\$50 and ticket sales help provide Ag Literacy programs and college scholarships for Kane County students.

Return the form below, stop by, or call the Kane County Farm Bureau at 630-584-8660 to purchase your tickets with VISA or MasterCard.

The winning ticket will be drawn on October 13, 2022 at the Kane County Farm Bureau.



We offer wet hosing, bulk tank fills and package lubricants – D.E.F, Oil, Hydraulic, Diesel and Gas for all your needs.

We are a 24/7 Fuel Supplier servicing Illinois – Wisconsin – Indiana  
Call us today at 847-994-3010 or visit us online at [www.luckysenergy.com](http://www.luckysenergy.com)  
Growing To Serve You Better

**Vintage Truck Raffle KCFB Foundation**

Please send me \_\_\_\_\_ tickets (\$20 each, or 3 for \$50)

Name \_\_\_\_\_

Address \_\_\_\_\_

City, State, Zip \_\_\_\_\_

Email \_\_\_\_\_ Phone (\_\_\_\_) \_\_\_\_\_

Return with check made payable to Kane County Farm Bureau Foundation, 2N710 Randall Rd., St. Charles, IL 60174 or charge my:

Visa  MC # \_\_\_\_\_ Exp \_\_\_\_ / \_\_\_\_

Signature \_\_\_\_\_ Date \_\_\_\_ / \_\_\_\_ / \_\_\_\_

# Touch-A-Tractor brings farm life to the suburbs

Hundreds of families and dozens of faithful volunteers enjoyed a weekend on the lawn at the Kane County Farm Bureau during Touch-A-Tractor in April. Mother Nature helped us with moderate temperatures on days 2 and 3, and a nice mix of sunshine and puffy clouds. The family friendly event offered the opportunity to get outside and enjoy activities, learn about agriculture and see farmers that provide food for a growing population, in all kinds of weather.

Machinery on display included Allis-Chalmers, Farmall, John Deere, Case and

Oliver antique tractors, modern farm tractors from Kubota, Massey Ferguson and John Deere, along with spraying, tillage and hay baling equipment. The 1971 Chevrolet C10 pickup was there, encouraging guests to take a chance at winning the vintage truck.

Children enjoyed riding pedal tractors, viewing the collection of Native American artifacts, participating in a coloring contest, and attending sessions to make a wool felted bunny and to enjoy readings of farm books. The "culvert crawl" was a hit, as was the straw bale stack

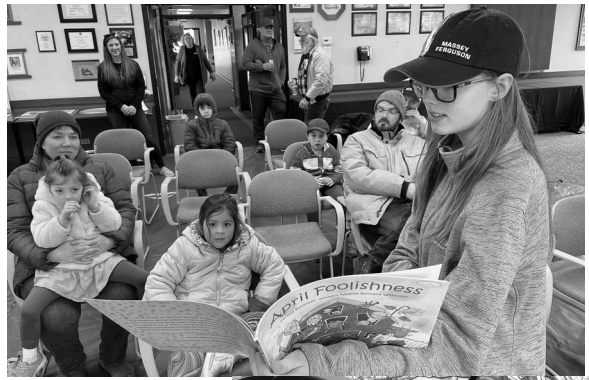
that kids climbed to get a good vantage point for the event as their parents snapped photos.

Many Touch-A-Tractor visitors helped raise college scholarship funds for the KCFB Foundation through the purchase of tickets in the 2022 Vintage Truck Raffle, featuring a Grand Prize 1971 Chevrolet C10 pick-up truck

to be won in the October drawing. The Foundation also revealed the 18 students awarded college Scholarships for

2022-23, to assist them in pursuing careers in agriculture.

Our May Kane County Farmer lists prize winners, Scholarship winners and the scores of volunteers that make this event possible. Thanks ALL!



Snapshots and smiles from Touch-A-Tractor, clockwise from top left:

Kids gathered hourly for Story-Time as volunteers read aloud a variety of ag-themed books;

Addison enjoyed the view atop the straw bale mountain;

Noah was comfortable in the seat of an Oliver Super 55 antique tractor;

Visitors were fascinated by the collection of Native American artifacts gathered from local farm fields;

Kids had fun crafting wet felted bunny keepsakes;

This mom and sons had a great time "driving" this John Deere tractor.



Above: AGCO hosted a seed planting table – kids got to take home a vegetable seed to nurture. Right: Kids enjoyed the Sunday morning Easter egg hunt on the KCFB lawn.



See you next year!

## KCFB members visit local supportive living center

In late March, KCFB Board members Wayne Schneider and Craig Bradley visited Victory Centre of Bartlett Supportive Living. Schneider discussed lifecycles of common crops

in Illinois and Bradley shared information about the lifecycle of bees and bee keeping.

Pictured shaking hands with KCFB Board of Directors Vice President, Wayne Schneider is retired Hampshire farmer Phyllis Bicknese.



## 26th annual IAITC Golf Outing – register now!

Join Illinois Agriculture in the Classroom on course for the 26th Annual Illinois Agriculture in the Classroom Golf Outing, a fundraiser hosted by the IAA Foundation. This scramble-style tournament allows golfers of all abilities to compete for great prizes while supporting ag literacy!

100 golfers per course, so don't delay! The registration fee is \$150 per golfer – \$600 per foursome and includes 18-holes of golf, lunch and other refreshments, and all on-course contests. Call KCFB to register – 630-584-8660.

Choose between Monday, June 13 at The Oaks at River's Edge in Pontiac, Thursday, June 16 at Lincoln Greens in Springfield, or register for both.

Check in opens at 9:00am, with a shotgun start at 10:00am, and a social hour & awards immediately following golf. We

Registration is limited to the first



## Thank you ...

Many volunteers contribute to the success of Touch-A-Tractor. The bringing together of families, the smiles on the faces of the kids...and the farmers, who are rightly proud of their profession, made it all worthwhile! Kane County Farm Bureau and our Foundation offer thanks to the following individuals for making equipment available, for demonstrations, help with set-up and staffing during the event and otherwise assisting in the success of this farm-city relations and Foundation fund-raising program. We apologize to anyone we inadvertently omitted. Without your help, Touch-A-Tractor would not be possible.

- Craig Bradley
- Mike Bohlin
- Joe Engel
- Beth Gehrke
- Bob Gehrke
- Lisa Geisler
- Eldon Gould
- Sandy Gould
- Wayne Schneider
- Louise Johnson
- Mike Kenyon
- Bill Keck
- Bill Collins
- Chris Collins
- Carolyn Gehrke
- James Reynolds
- John Long
- Michael Long
- Nan Long
- Natasha Lehrer Lewis – Esther's Place
- Tom Mahan
- Suzi Myers
- Dave Worley
- Jami White

- Joseph White
- Katie Crawford
- Kane County Sheriff Department
- Culver's of St. Charles, Michael Wondrasek and Chris Endean

- COUNTRY Financial**
- Norma Grathoff
  - Jeff Jones
  - Keith Eakins
  - Deb Stob

- Elburn Lions Club**
- Ed Stuehm
  - Phil Albano
  - Phil Van Bogaert

- AGCO Parts Employees, Batavia**
- Andrea Achermann
  - Lorie Cantu
  - Belinda Meyer
  - Franky Achermann

- Central FFA**
- Kaneland FFA
  - Hinckley-Big Rock FFA

### For providing Tractors & Farm Equipment

- Bruce Nagel
- James O'Connell
- Randi Pauli
- Scott Horton
- Larry Koesche
- Dan Kocher
- Dennis Erikson
- Eldon Gould
- Scott Horton
- Tim Kehoe
- AC McCartney Implement
- Karl Kettlekamp
- Joe White
- Jim Lickteig
- Mike Mendel
- Dale Pitstick
- Bob Gehrke
- Wayne Gehrke
- Primrose Farms, Alison Jones
- Harley Veldhuizen
- Central Tree, Cole Stapleton & Tyler Albrecht

## St. Peters Food Pantry donations

Even on a gloomy afternoon in April, Kelcee Miller and Sindhu Saveen could bring sunshine and a friendly smile to our hungry neighbors' faces by dropping off food donations to the St. Peters Food Pantry in Geneva.

Thank you to all who donated and contributed throughout the year and at our Touch-A-Tractor event!

