

Kane County Farmer



**KANE COUNTY
FARM BUREAU®**
Farm. Family. Food.™

Enhance the quality of life for member families;
Promote agriculture, farms & food; and,
Advocate good stewardship of our land and resources.

VOL. 82 NO. 5 MAY 2017

KCFB Foundation announces 14 scholars

The Kane County Farm Bureau Foundation will award over \$14,000 in college scholarships this year to 14 future ag industry professionals. After a review of over 30 applications, the Foundation Board of Directors has awarded seven Foundation agricultural scholarships, one general scholarship, three memorial scholarships, two AGCO scholarships and one President's Scholarship.

"We had another wonderful group of students apply for scholarships this year," said Foundation Vice-President Wayne Schneider. "It is impressive what these students have already accomplished within agriculture, and we look forward to seeing what they will continue to contribute during their time in college and in their successive careers."

As a not-for-profit entity, the Foundation solicits and distributes private funding for scholarship, education and leadership training, Ag-in-the-Classroom programs, Ag Literacy, charitable activities and research. The Foundation was established in 1989 by the Kane County Farm Bureau to carry out charitable work in the advancement of

agricultural literacy and preparing students for careers in the agriculture industry. In its history, it has awarded hundreds of thousands of dollars in college

scholarships and internships. Foundation scholarship applications are submitted by Feb. 15 each year and recipients are announced in April.

Prerequisites and more details on scholarship requirements are available at www.kanecfb.com.

KCFB Foundation scholars were recognized at a ceremony

at the conclusion of Touch-A-Tractor in April at Kane County Farm Bureau. The Foundation Board extends congratulations to these young leaders of tomorrow and best wishes in their academic pursuits.

The following students received \$1,000 KCFB Foundation Scholarships. Their bios will be included in the June Kane County Farmer.



KCFB Foundation scholars assembled at a ceremony concluding the 2017 Touch-A-Tractor event at Kane County Farm Bureau on April 9th. Although many recipients are away at school and weren't able to attend, seven scholars were present for the ceremony. Pictured from left to right are: Jacie Panek, Monica Zimmerman, Jackson Kettelkamp, Jaide Panek, Heidi Harbecke, Jessica Bowgren, and Vanessa Gould.

**Jackson Kettelkamp
Jacie Panek
Catherine Gorenz
Vanessa Gould
Jaide Panek
Alicia Sunderlage
Kyle Yorke
William Dumoulin**

Calling all teachers— Register for KCFB's Summer Ag Institutes

Once again, Kane County Farm Bureau has two exciting and educational tours planned for area teachers in June. This is an excellent opportunity to earn college graduate credits from Aurora University, as well as

gather lots of lessons to take back to the classroom. Learn through hands-on experience and meet farmers for firsthand knowledge of today's best agricultural practices.

Summer Ag Institute 1 is scheduled for June 12-16

Our very popular summer class is a week-long look at the many different facets of agriculture in Kane County. This is your chance to tour local farms,

Kane County Farm Bureau's Summer Ag Institutes are an excellent opportunity for teachers to learn about many aspects of agriculture and obtain ideas and lessons to take back to their classrooms. Teachers get to tour working farms, just like this dairy farm, and learn about agriculture directly from farmers. There are two institutes offered – the first is open to anyone, and the second is open to graduates of the first class.

have time to speak with individual farmers, tour agri-businesses, see how agriculture affects your daily life, and network with other teachers. Discuss and become knowledgeable about GMO's, sustainability, organic practices, and other hot topics.

Summer Ag Institute 2 is scheduled for June 27-30, and focuses STEM and Agriculture.

A 4 day event focusing on STEM and Agriculture is being

offered this summer to graduates of any year's SAI I class. This is your chance to visit farms and businesses with the emphasis on STEM. Possible sites include innovative new agricultural sites, a grain farm with a new twist, and agriculture businesses.

Please contact Suzi Meyers at 630-584-8660 for more information about the Summer Ag Institutes or to register.



Two year old Zion Creutz of Elgin is the lucky winner of a brand new pedal tractor in the Kane County Farm Bureau Foundation's 2017 pedal tractor raffle. He is the son of Tommy and Kelly Creutz. See a full list of this year's winners on page 7.



CONNECT WITH US



YouTube

DATES TO REMEMBER

May

- May 4**
Board of Directors, 7:30pm
- May 17**
Women's Committee, 9:15am
- May 18**
Kane County Board Ag Committee, 10am, County Administration Building
- May 29**
Memorial Day – Office Closed



Members save \$8 on admission with New 2017 Kane County Member Benefit

Plan a visit to Santa's Village Azoosment Park with a new KCFB member benefit for 2017. The park is open weekends from May 12–June 11th and open daily beginning June 12–August 18th. General admission tickets are \$24.25 (age 2 and under are free) KCFB member ticket price is \$16.25 (no tax or service fees) and NO BLACKOUT DATES. Enjoy 20 rides and 100's of animals. Target audience is 12 and younger. Parking is FREE and food & drink can be brought in. Call the Kane County Farm Bureau for more information and purchase tickets at 630-584-8660.

May Featured Product

Steakhouse Boneless Pork Chops

This month we're offering steakhouse boneless marinated pork chops! Each box comes with ten sealed 8 oz. chops. These Smokehouse Pork Chops are marinated in a balsamic reduction with mustard seed and just a hint of onion. They are very popular, high quality meat ready for your grill. The prices for the Smokehouse Boneless marinated pork chops for members are \$23.00 for PLUS members, \$25.00 for members, and \$28.00 for Non-members. These special pork chops are available while supply lasts for the month of May at the Kane County Farm Bureau, Randall Rd. and Oak St. in St. Charles.

KCFB Board meeting review

The April meeting of the Kane County Farm Bureau Board of Directors was called to order at 7:30 pm on April 4, 2017 after a report on the 2016 Audit from Ty Lein, CPA, Senior Associate at CliftonLarsonAllen.

President White gave his report, starting with an update on the IFB Grant Committee. He circulated a letter from IFB president Rich Guebbert Jr. and informed on Livestock Siting

and Sales Tax Exemptions. White also circulated information about the IFB "New Horizon" Award for new programs that meet the IFB Board's established priorities, and gave directors a report from the policy review committee meeting from earlier in April.

Arnold gave a Managers report, circulating a Membership Matters Monthly newsletter and calendar of events. He informed board members that

KCFB has agreed to be a Fit for Kids "Brown Bag for Healthy Kids" sponsor. Arnold reminded directors about the AGCO/GSI grain bin safety display at Touch-A-Tractor and informed them that KCFB has purchased complimentary items including a Turtle Tube rescue sleeve and rescue auger. April 1st marked the start date for PM (Professional Membership) and Kane County Farm Bureau's participation in an IAA

Foundation 'pilot' for Foundation fundraiser tracking is ongoing.

B. Collins gave the PR & Membership Report. He informed the board of contributions to the KCFB Foundation during the previous month including: Harvest for All Contributions by: Anne Getzelman & Brian Sebastian to Burlington Hampshire Food Pantry and FOOD>Forward contributions by Roger & Theresa Biddle.

Joe White delivered the Foundation report. He stated that 14 scholarships were awarded to students this year. The scholarships were funded by donors via the Food>Forward Program and several sponsors. Food>Forward raises funds for classroom education about food and farming, and provides college scholarships to local students studying for careers in agriculture.

A written Ag-in-the-Classroom report from Suzi Myers was circulated. SPROUTS (Spring Program of Reading & Outreach to Urban Teachers and Students) is scheduled for April 17-21. Summer Ag Institute I (June 12-

16) and Summer Ag Institute II (June 27-30) both currently have 6 registrations. National AITC Conference is scheduled for June 20-23 in Kansas City, Missouri.

The board also received updates from the Young Farmers Committee. This update informed directors that 4 Committee members are signed up to attend the 2017 IFB Young Leader Tour to Ontario in July and 2 Burlington FFA members and advisor Ryan Robinson attended the 2017 Youth Conference in April. A grain bin safety and extraction demonstration was hosted on April 15 at the Biddle Farm for area fire departments. The Young Farmers Committee provided lunch for those in attendance.

Lastly, directors addressed the election of directors and officers. Joe White, Wayne Schneider and Mike Kenyon will serve on the executive committee as president, vice-president and secretary/treasurer respectively.

The next scheduled Kane County Farm Bureau Board of Directors meeting will be held on Thursday, May 4 at 7:30pm.

Special thanks to the Employees of AGCO Parts in Batavia IL for helping to make the 12th Annual Touch-A-Tractor event a huge success. Contributions from AGCO Employees funded two new scholarships this year to help secure the future of farms and food. Their presence was seen all around this year's event, in farm equipment, games, and even DIY garden prizes.



1st AGCO Global Womens' Network Scholarship goes to Sycamore senior

Heidi Harbecke has been awarded the first ever AGCO Parts: AGCO Global Women's Network Scholarship. Heidi is the daughter of Ron and Beth Harbecke of Sycamore.

The AGCO Parts: AGCO GWN Scholarship was started in 2017 and provides a \$1,000 college scholarship annually to a female student who resides in Illinois and is pursuing higher education in an agriculture related field. The scholarship is funded by the Employees of AGCO Parts in Batavia, IL.

Heidi is a senior at Sycamore High School. She is active in the Sycamore FFA chapter, on the high school soccer team, and on the high school volleyball team. Heidi is also involved in a wide variety of leadership roles in the Sycamore community, including the Big Sis Little Sis program.

Heidi hopes to attend Louisiana State University next year and major in engineering. She feels the field of engineering can greatly contribute to agriculture, an industry that has shaped the person she is today.

A long-term goal Heidi has set in place for herself is to better the world and to not to be known by her name but rather by the impact she helps make, as impacts last longer than names.



Heidi Harbecke

Bowgren receives President's Scholarship

The Kane County Farm Bureau Foundation has awarded its \$1500 President's Scholarship to Jessica Bowgren. This honor is reserved for the high school senior among this year's applicants with the most outstanding combination of scholastics, activities, goals, and ACT score. Jessica's parents are Steve and Gaye Bowgren.



Jessica Bowgren

Jessica is from Maple Park and attends Kaneland High School. She has been active in FFA, Ukulele Club, and a member of the

Kaneland varsity tennis team. She served as Kaneland FFA Secretary for one year before being elected Vice President for two years in a row.

Jessica will attend Iowa State University, majoring in animal science. Her passion for animals led her to select his major. In the future, she hopes to specialize in animal nutrition and would like to make the livestock industry better by creating diets, feeds, or supplements that can provide benefits to the entire agricultural industry.

CONNECT WITH US



Welcome new members

You receive the Kane County Farmer because you are a Farm Bureau member. If you are a farm operator or owner, you benefit from a local, state and national organization committed to agriculture and your way of life.

If you do not have direct ties to farming, your membership helps promote local farms and farming, encourages wise use of our limited natural resources and preserves farmland and our agricultural heritage while allowing you to enjoy COUNTRY insurance and the many other benefits of one of Illinois' premier membership organizations.

We appreciate your membership and continued support and we welcome your comments on the content of the Farmer. We encourage you to make recommendations about farm, home, food, natural resource, renewable energy or agricultural heritage and history related topics for inclusion in future issues of the Farmer.

KANE COUNTY FARM BUREAU BOARD ATTENDANCE JANUARY 2017 THRU DECEMBER 2017

	JAN	FEB	MAR	APR	MAY	JUN	JULY	AUG	SEP	OCT	NOV	DEC
C. BRADLEY		X	X	X								
F. CARLSON	X	X	X	X								
B. COLLINS	X	X	X	X								
C. COLLINS	X	X	X	X								
J. ENGEL	X	X	X	X								
G. GAITSCH	X	X	X	X								
B. GEHRKE	X		X	X								
W. KECK	X	X	X	X								
M. KENYON	X	X	X	X								
K. KETTLEKAMP	X	X	X	X								
D. LEHRER		X	X	X								
N. LONG	X	X		X								
D. PITSTICK		X		X								
W. SCHNEIDER	X	X	X	X								
J. WHITE	X	X	X	X								

Kane County Farmer

KANE COUNTY FARM BUREAU PUBLISHED MONTHLY

Steven J. Arnold, Editor

Suzi Myers, Ag Literacy Coordinator

Audre Pack, Training Specialist

Elizabeth Polovin, Member Services Coordinator

Kristi Van Oost, Development & Program Coordinator

Valerie Johnson, Administrative & Program Assistant

OFFICE: Randall Rd. between Routes 64 & 38

Address: 2N710 Randall Rd., St. Charles

PHONE: 630-584-8660

info@kanecfb.com www.kanecfb.com

OFFICE HOURS: 8:30-4:30 Monday through Friday

(USPS No. 289700)

POSTMASTER: Send address changes to Kane County Farmer

2N710 Randall Rd., St. Charles, IL 60174

Periodical Postage • Paid to St. Charles, IL 60174

Year Subscription: \$2.00

<p>■ DISTRICT 1 Aurora, Sugar Grove, Big Rock Twnshp. Nan Long 11461 E. County Line Rd. Big Rock, IL 60511 815-693-7214 Donna Lehrer 7S027 Jericho Rd. Big Rock, IL 60511 630-556-3476 William Keck P.O. Box 281 Sugar Grove, IL 60554 630-466-4668</p>	<p>Joe White President 47W727 Main St. Rd. Elburn, IL 60119 630-557-2517</p>	<p>Mike Kenyon Secretary/Treasurer 1250 E. Main St. South Elgin, IL 60177 847-741-1818</p>
<p>■ DISTRICT 2 Kaneville, Blackberry, Gen./Bat. Twnshp. Bill Collins 1125 Lewis Rd. Geneva, IL 60134 630-484-6852 Karl Kettelkamp OS860 Rowe Rd. Elburn, IL 60119 630-365-2713</p>	<p>■ DISTRICT 3 Virgil, Campton, St. Charles Twnshp. Frank Carlson 104 Sumac Court St. Charles, IL 60174 630-513-9980 Chris Collins 1143 Anderson Elburn, IL 60119 630-934-4642</p>	<p>Craig Bradley 37W791 Orchard Lane Elgin, IL 60124 847-888-2380</p>
<p>■ DISTRICT 4 Burlington, Plato Elgin Twnshp. Beth Gehrke 12N860 US Hwy. 20 Elgin, IL 60124 847-697-2538</p>	<p>■ DISTRICT 5 Hampshire, Rutland, Dundee Twnshp. Joe Engel 516 Sawgrass Ln. Hampshire, IL 60140 847-347-5561</p>	<p>Gerald Gaitsch 10613 Brittany Ave. Huntley, IL 60142 847-669-2003</p>
		<p>Wayne Schneider Vice President 721 Lindsay Lane West Dundee, IL 60118 847-428-0488</p>

Beef store is now open!
By appointment only

farmdirectBLACKANGUS.com

100% hormone free beef.
Selling individual cuts. Buy as little or as much as you want.

815.895.4691
Mark & Linda Schramer, Owners
8N840 Lakin Road, Maple Park

Sample Packs make great gifts!

Farm Bureau member benefit spotlight: Peace of Mind Medical Alert

When is the right time to consider protecting yourself or a loved one with a medical alert system? Unfortunately, there is no crystal ball that can pinpoint the correct answer. One out of three Americans age 65 or older fall at least once a year, and the chances of surviving a fall are six times greater if you are found in one hour. Every minute that a stroke victim goes unattended, the chance of permanent disability or death increases dramatically.

A medical alarm device can provide the independence for the elderly that spend time alone, peace of mind for family members and reassurance that if one of the afore-mentioned occurrences does take place, help is just a push of a button away.

With a medical alert system from PeaceofMind Alert you will remain independent in the comfort of your home while having the peace of mind knowing that help will be there when you

need it most. The U.S. based monitoring center includes all EMD certified phone attendants that stay on the line with you until help arrives and is open 24/7 365 days a year.

PeaceofMind Alert is an ILFB Member Benefit, which means you will receive a Free Month of Monitoring accompanied with absolutely no shipping, set-up, or activation fees. Call us at 217-994-9015 or toll free at 855-872-8404.

FB News Briefs

SMITHFIELD EYEING TRANSPLANTS – Smithfield Foods has established a separate bioscience unit to expand its role in supplying pig parts for medical uses, with the ultimate goal of selling pig organs for transplantation into humans. The company joined a public-private tissue engineering consortium with companies including Abbott Laboratories, Medtronic and United Therapeutics Corp, but is the only pork producer in the group. (Reuters)

BRAZILIAN BEAN CROP COULD SURPASS 4 BILLION BU. – Nearly two-thirds of the Brazilian soybean harvest is complete, but production estimates there continue to grow as strong yields and additional acres pushed the latest USDA estimate higher. According to that estimate, the country's soybean crop will surpass the 4-billion-bushel mark for the first time at 4.07 billion bushels.

(FarmWeekNow.com) **GLOBAL GLUT** – U.S. farmers reluctant to sell corn at today's below-break even prices are stuffing crops in every available space, and even piling it on the ground, hoping to store it long enough for prices to rise. The picture is much the same across the globe, with world stockpiles of corn and wheat at record highs. According to the USDA, global stocks of corn, wheat, rice and soybeans combined will hit 671.1 million tons by next harvest. (Reuters)

CHINA AGREES TO REOPEN TO U.S. BEEF – President Donald Trump and Chinese President Xi Jinping have reached a deal in principle to allow U.S. beef into China for the first time since 2003. AFBF Trade Adviser Dave Salmonsens, however, says China has said before that it's allowing U.S. beef access to the \$7 billion market only to reverse course

later. (FarmWeekNow.com) **AFBF PUSHES FOR TAX REFORM** – Farmers need a tax code that recognizes agriculture faces unique financial risks, AFBF's Pat Wolff testified before the House Agriculture Committee. "Tax priorities and policies are needed the support high-risk, high-input, capital-intensive businesses like farms and ranches that predominately operate as sole proprietors and pass-through entities," said Wolff, AFBF's tax policy specialist. (FarmWeekNow.com)

STATE LAWMAKERS EXAMINING TAX OPTIONS – IFB opposes some proposed changes to the state sales tax being explored in the state. An amendment, sponsored by Sen. John Mulroe, D-Chicago, would make numerous changes to the current state sales tax law. Those changes would end and rollback several agricultural-related sales tax incentives and exemptions.

Engineering major at Iowa State University wins AGCO Scholarship

Erik Dunteman has been awarded the first ever AGCO Parts Division Scholarship. Erik is the son of William and Kari Dunteman of Big Rock.

The AGCO Parts division scholarship was started in 2017 and provides a \$1,000 college scholarship annually to a stu-

dent who resides in Illinois and is pursuing higher education in an agriculture related field. The scholarship is funded by the Employees of AGCO Parts in Batavia, IL.

In high school, Erik was active in FFA and 4-H. After graduating from Hinckley Big

Rock High School in 2014, Erik chose to attend Iowa State University.

Erik is a part of the Iowa State SpaceX Hyperloop Pod design team and is an active member in the FarmHouse Fraternity. Currently, he is studying mechanical engineering with the intention of specializing in agricultural mechanics. He hopes to one day be able to give back to the agricultural community by helping to engineer equipment to help advance the agriculture industry.



Allison Steinger

Allison Steinger has been awarded the Buck Memorial Scholarship. The scholarship provides \$1,000 for tuition and fees for students pursuing higher education in an agriculture related field.

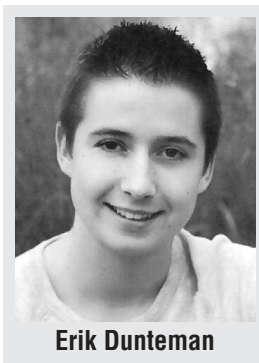
This marks the 16th year the scholarship has been awarded to students in the seven county service area around the Buck Bros./J.W.Turf John Deere dealership in Hampshire. It is made possible by gifts from the family and friends of the late John Buck, who established the company in 1977.

Allison is from Elburn and graduated Kaneland High School in 2014 where she was involved in both FFA and 4-H, showing beef cattle.

Now attending Iowa State University and majoring in animal science, Allison is Treasurer

of the Alliance for Disability Awareness Club and has been to the Women in Science and

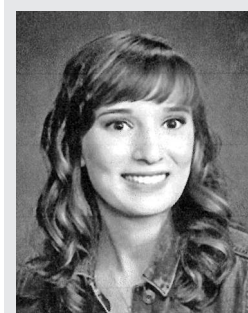
Engineering Leadership Conference as well as the North American Junior Red Angus Event Quiz Bowl. Currently, Allison is an animal science major with hopes of getting a job in the animal nutrition field once she graduates.



Erik Dunteman

Swanson Memorial Scholarship awarded to Monica Zimmerman

The Kane County Farm Bureau Foundation named Monica Zimmerman of Maple Park as the recipient of the \$1000 Chuck Swanson Memorial Scholarship. Monica is the daughter of Steven and Julie Zimmerman.



Monica Zimmerman

The Chuck Swanson Memorial Scholarship was established by the family and friends of the former Farm Bureau Director and long-time volunteer to provide awards for students residing in Kane County pursuing a degree in an agriculture-related career field.

Monica graduated from Rosary High School in 2016 where she was both an AP

Scholar and a member of the National Honor Society. She was also active on the Debate Team, Student Ambassadors and Student Council.

Currently Monica attends University of Illinois where she studies crop science. She was introduced to agriculture while interning one summer for the University of Illinois Research Center. She hopes to eventually work in fruits and vegetables by both conventional and more advanced methods like vertical gardening or hydroponics.



Chuck Swanson

The Chuck Swanson Memorial Scholarship was established by the family and friends of the former Farm Bureau Director and long-time volunteer.

Heckel-Blickle Memorial Scholarship awarded to ISU student

Susie Thompson has been awarded the Mary L. Heckel-Blickle Memorial Scholarship. Susie is from Maple Park and is the daughter of Michael and Jennifer Thompson.



Susie Thompson

The Mary L. Heckel-Blickle Memorial Scholarship was started in 2015, and provides a \$1,000 college scholarship annually to a student who resides in Kane or Macon County Illinois. Mary's family established the scholarship to pay tribute to her farming legacy and promote the growth of the next generation of agricultural leaders.

After graduating from Burlington-Central High School and attending Joliet Junior College for one year, Susie served as the 2015-16 State Secretary for the Illinois

Association FFA and was also very active in FFA during high school, serving as President, Vice President, and Secretary for Section 6, and as President and Secretary for Burlington-Central FFA. Susie received numerous awards within FFA, including Top 10 Illinois FFA Section

President, the American FFA Degree, Outstanding Senior FFA member, Most Active FFA member, and the State FFA Degree.

Susie was also active in 4-H, the Joliet Junior College Student Agriculture Association, and CHS Student Council.

Currently she attends Illinois State University, majoring in Agricultural communications.



We offer wet hosing, bulk tank fills and package lubricants – D.E.F, Oil, Hydraulic, Diesel and Gas for all your needs.

We are a 24/7 Fuel Supplier servicing Illinois & Wisconsin. Call us today at 847-994-3010 or visit us online at www.luckysenergy.com

Growing To Serve You Better

DONALD J. FEE, DDS
FAMILY DENTAL CARE
26 W. CROSS ST. SUGAR GROVE DONALDFEEDDS.COM
630-466-4511

AG LITERACY CORNER

By Suzi Myers



Spring means a lot of things to me, one of which is the hatching of eggs in my classroom. When I taught fourth grade, the hatching of the eggs was a highlight of the year.

We began the year watching Monarch caterpillars eat milkweed plant leaves like there was no tomorrow, growing by leaps and bounds until they finally formed their chrysalis. It was only a few days (10-14) before these green with gold trim chrysalises were broken open by the emerging Monarch butterfly. The children watched with wonder as the butterfly hung onto the remains of the chrysalis, flapping its wings to dry them off and get the blood circulating until they took off in flight.

Spring brought our yearly

visit to Ag Days (yes, my students attended Ag Days for many years). At Ag Days, we would meet Nancy and Ken Meyer – the poultry presenters – who would supply the eggs for us to hatch. The deal was that I would hatch the eggs and then bring them out to Nancy’s farm to live. It always made the students feel better about giving their special chicks to a known farmer, Nancy.

When the eggs arrived, we’d put them in the incubator, with an automatic turner, and wait the long 21 days till the little chicks arrived. Their peeping filled the classroom. The chicks would be the hit of the school, not only with my students, but all classrooms had the ability of come see the little ones, so it was a

KANE COUNTY FARMER

learning experience for many.

After I retired and started working at the Farm Bureau, Nancy would still be my supplier, only now she hatched the eggs and brought the chicks to Ag Days and Touch-A-Tractor for all to see and touch. Things change, as has the supplier of the chicks, who is now a farm supply company. I’m blessed to have found good homes for the chicks, some have gone to a Wisconsin farm and lately they have remained in Kane County.

This year brought even more changes ... due to a variety of reasons, this year the Ag Days students and I learned about baby turkeys (poults). We learned the difference between a poult and a chick. At Touch-A-Tractor, all the children saw the baby chicks arrayed in black, yellow, grey, and brown. They learned how the chick came from the egg; what the chick eats; how fast it will grow up to be a hen/rooster and how soft they are before the feathers replace the down.

These six chicks spent the 3 day weekend being touched and marveled at by the children and their families. However, they were not finished. On Monday, they went to visit a group of older folks, who enjoyed touching, corralling, and watching the little chicks as they walked and

fluttered around the tabletop. Their last stop was to the farm where they will mature and produce eggs for the farm family. They deserve a life on the farm after all the “teaching” they accomplished within the first week of their lives.

So, I have many happy memories of spring and baby chicks.

Like fish in an aquarium, I never tire of watching the chicks drink, scratch, fall asleep in a huddle, and stand in their food. I also never tire of the wonder on a child’s face when they touch the soft chick. The baby chick’s season is over for now, but I’m sure next spring will once again revolve around chicks.

Book of the month

Did you know that humans collected honey from bees as early as 15,000 BC?

Did you know that we “discovered” how bees pollinate flowers in 1750?

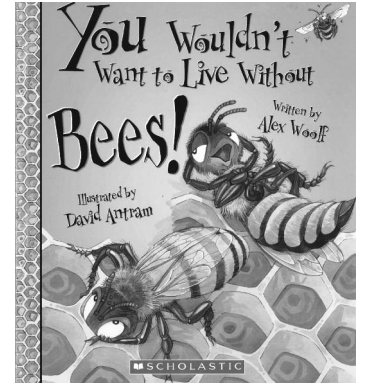
Lorenzo Langstroth designed the modern beehive, made of movable frames in 1851?

All these questions came from the “Bees Timeline” in front of the book. Inside the book are pages that cover the parts of a bee, why flowers need bees, why bees swarm and much more. There is a glossary, a list of honeybee talents (including that they fly about 15 mph), as well as a “Did You Know?” page at the end of the book.

The book contains a lot of facts and helps to point out the need for bees in our lives. (Did you know that one out of every 3 bites of food we eat is due to pollination? We need bees for

that pollination.)

If you are interested in books concerning bees and pollination, we have many available for check out from our agricultural library here at the KCFB. Our library began due to a request years ago by Bob Konen and Dean Dunn. We have an ever growing selection of titles.



You Wouldn't Want to Live Without Bees!
by Alex Woolf

FB News Brief

DEEP FREEZE WIPES OUT FRUIT CROP – Agriculture officials estimate March’s deep freeze in the southern U.S. could total about \$1 billion lost in peaches and blueberries, with South Carolina and Georgia bearing the brunt of the damage. South Carolina’s ag department says about 85 percent of the peach crop was lost; blueberries in Georgia were cut by 80 percent. (*Washington Post*)

Suzi Myers
KCFB AITC Coordinator
2N710 Randall Rd
St. Charles, IL 60174

Angie Swiney
4th grade Teacher
Gary D. Weight Elementary
1500 Ketchum Road
Hampshire, IL 60140

Thursday, March 23, 2017

Dear Suzi,

I am writing to let you know that my entire 4th grade team of teachers cannot stop talking about what a wonderful experience we had at yesterday’s field trip to the Kane County Farm Bureau’s 2017 Ag Days Expo!

It was a great learning experience for all of us. We want to thank you and all the volunteers for providing such a terrific day for us. We were impressed with the maturity and knowledge your student helpers provided throughout the day. Our students were full of thought-provoking questions when we returned yesterday. We will be able to always use this information as part of our background knowledge when specific agricultural topics arise in class. Students were excited about topical they recognized from our “Wonders” reading curriculum

We cannot believe this activity was free for us. We hope the Farm Bureau will continue this great tradition for years to come. Thank you again and we hope to see you next year with a new group of eager 4th graders!

Sincerely,

Angie Swiney
Kim Howey
Judy Latimer
Ashley Liss
Amy Wells

Thursday, March 23, 2017

Dear Mrs. Myers,

Thank you so much for having us at the Kane Co. Ag Days! I'm a student that thinks school is fun, but the field trip was funner than fun.

It is kind of hard to think of the bestest part, but my favorite part was either Farm-O pr the honey bees. I even made my dad and sister compete in a ton of agricultural questions that were based on what I learned. My sister won by one question. I really hope I get another chance to come!

4th grader,
Joe
Weight Elem, Mrs. Swiney's class

Helping you protect what matters most



AUTO | HOME | LIFE | BUSINESS | RETIREMENT

- | | | |
|---|--|---|
| 
Bob Effner , CLF®, LUTCF
St. Charles – Elgin
Agency Manager
St. Charles
630-584-0001 | 
Edward Stuehm
Geneva
630-845-8245 | 
Ashraf Gerges
Aurora
630-898-3750 |
| 
Todd Wilcox
St. Charles
630-762-1326 | 
Michael O'Brien
Geneva
630-762-0852 | 
Sherri Schramer
Elburn
630-365-9500 |
| 
Bobbi Boston
St. Charles
630-485-5155 | 
Bob Baty
Geneva
630-492-5317 | 
Dominick Davero
Elburn
630-365-3737 |
| 
Keith Eakins
St. Charles
630-762-1324 | 
Luke Fawkes
Elgin
847-742-0001 | 
Chuck Quick
Hampshire
847-683-2100 |
| 
Kelly Landorf
St. Charles
630-762-1328 | 
Jonathan Gonzalez
Elgin
847-742-0001 | 
Josh Austin
Hampshire
847-683-2100 |
| 
Donna Tonovitz
St. Charles
630-549-7694 | 
Sherry Lochen
Elgin
847-742-0001 | 
Dan Cooper
Sugar Grove
630-466-9600 |
| 
Orazio Difruscolo
St. Charles
630-549-7696 | 
Bob Riedel
West Dundee
847-428-5434 | 
Ted Schuster
Sugar Grove
630-466-9600 |
| 
Bob Kearns
S. Elgin
847-888-3200 | 
Gary Bolger
West Dundee
847-531-6110 | 
Sonny Ellen
Sugar Grove
630-466-9600 |
| 
David Murray
Montgomery
630-897-2364 | | |

Auto, home and business insurance policies issued by COUNTRY Mutual Insurance Company®, COUNTRY Preferred Insurance Company® and COUNTRY Casualty Insurance Company®. Life insurance policies issued by COUNTRY Life Insurance Company® and COUNTRY Investors Life Assurance Company®. Fixed annuities issued by COUNTRY Investors Life Assurance Company®. All issuing companies located in Bloomington, IL.



Farm Facts @ Fun

Compiled by Suzi Myers



Tasty trivia

- Americans eat nearly 50 billion burgers a year, which translates to three burgers a week for every single person in the United States. That's a lot of beef.
- McDonald's mogul Ray Kroc didn't get into the burger business until he was in his 50s.
- White Castle is the oldest burger chain in America. It was started in 1921 by Walter A. Anderson and E.W. Ingram who sold their burgers for 5 cents each.
- Burgers account for 40 percent of all sandwiches sold.
- Despite its American popularity, we have the Germans to thank for our beloved hamburger.
- Hamburgers are also called the Liberty Sandwich because soldiers during WWI wanted to avoid using the German name.
- According to McDonald's, the chain sells 75 burgers every single second of every minute of every hour of every single day.
- The Library of Congress credits Louis Lassen of Louis Lunch sandwich shop in New Haven, CT as the creator of the hamburger as we know it.
- The Hamburger hall of fame is located in Seymour, WI.
- The most hamburgers eaten in 3 minutes is 12 and was achieved by Takeru Kobayashi (Japan) on the set of "Lo Show dei Record" in Milan, Italy, on 11 July 2014.
- On September 2, 2012, the Black Bear Casino Resort near Carlton, Minnesota made the world-record bacon cheeseburger that weighed 2,014 pounds (914 kg). Guinness World Records verified the

- record for biggest burger
- The origin of the hamburger is not very clear, but the prevailing version is that at the end of 1800's, European emigrants reached America on the ships of the Hamburg Lines and were served meat patties quickly cooked on the grill and placed between two pieces of bread.
- The Library of Congress has officially declared that Louis Lassen of Louis' Lunch, a small lunch wagon in New Haven, Connecticut, sold the first hamburger and steak sandwich in the U.S. in 1900
- Lionel Sternberger is reputed to have invented the cheeseburger in 1926. The experimenting 16 year old fry cook at The Rite Spot in Pasadena, California added American cheese to a sizzling hamburger.

Kimchi Burger: Uncle Joe's Hamburgers of Seoul, South Korea invented this hamburger that includes kimchi (Korean hot, fermented cabbage) in the preparation.

Juicy Lucy: Two bars, Matt's and 5-8 Club in South Minneapolis both claim to have invented this cheese-burger that has the cheese inside the meat patty rather than on the top.

Hawaiian Burger: Topped with pineapple and often teriyaki sauce (from the Japanese-American culture).

Hamdog: Chandler Goff, the owner of Mulligan's, a suburban bar in Decatur, Georgia, invented the hamdog in February 2005. It consists of a hot dog that is wrapped in a beef patty, deep-fried, covered with chili, a handful of French fries, and a fried egg.

50/50 burger: Found in California, A half ground bacon, half ground beef burger patty developed by Scott Slater for Slater's 50/50 restaurant. Another variety is half kangaroo

meat and half bacon.

Luther Burger: The origin is disputed. According to legend, the burger was named for and was a favorite (and possible invention) of singer, songwriter and record producer Luther Vandross. It is a hamburger or cheeseburger prepared with one or more glazed doughnuts in place of the bun.

The **Rice Burger** is found in Japan/SE Asia, where the bun is made of rice.

"\$100 hamburger" is aviation slang for a pilot needing an excuse to fly. A \$100 hamburger trip typically involves flying a short distance (less than two hours), eating at an airport restaurant, and flying home.

Quadruple Bypass Burger: The burger weighs two pounds and the name is derived from the fact that the burger is unhealthy. The burger is available in Las Vegas, Nevada at the Heart Attack Grill, a restaurant known for being honest about the fact that their food is unhealthy.

Bacon Double Cheeseburger Grilled Cheese Sandwich

Prep Time: 10 minutes Cook Time: 15 minutes Total Time: 25 minutes Servings: 1

All of the flavors of a bacon double cheese burger in a grilled cheese sandwich with plenty of ooey gooey melted cheese!

Ingredients

- 2 strips bacon, cut into 1 inch pieces
- 1/2 small onion, diced
- 1 clove garlic, chopped
- 1/4 pound ground beef
- 1 tablespoon ketchup
- 1 teaspoon mustard
- 1/2 teaspoon worcestershire sauce
- salt and pepper or steak seasoning to taste

- 2 slices bread
- 1 tablespoon butter
- 1/4 cup cheddar, shredded
- 1/4 cup mozzarella, shredded
- 1/4 cup lettuce, shredded
- 1/4 cup tomatoes, diced
- 1 tablespoon pickle, diced

Directions

Cook the bacon in a pan over



medium heat, set aside on paper towels to drain reserving 1 teaspoon of grease in the pan and the rest elsewhere.

Add the onion and sauté until

tender, about 5-7 minutes.

Add the garlic and sauté until fragrant, about a minute.

Add the ground beef and cook draining any grease when done.

Mix in the ketchup, mustard, Worcestershire sauce, salt and pepper, simmer to reduce, remove from heat and set aside.

Heat a clean pan over medium heat.

Butter the outside side of each slice of bread, place one slice in a pan buttered side down, sprinkle on half of the cheese, then top with the the bacon, beef, lettuce, tomato and pickle followed by the remaining cheese and slice of bread, buttered side up.

Cook until golden brown on both sides and the cheese is melted, about 2-4 minutes per side.

Hamburger cookies

(from *tablespoon.com*)

- 1 cup shredded coconut
- Few drops of Green food coloring
- 20 vanilla wafer cookies
- 10 grasshopper fudge cookies (or any that look like a patty)
- 1 pouch (7 oz) red icing
- 1 pouch (7 oz) yellow icing

- Place coconut in a small zip-top plastic bag and add some green food coloring. Shake around until food coloring has absorbed and turned the coconut green.
- For each burger you will need two vanilla wafers as the buns. Place a small dot of frosting on the bottom bun and then place your grasshopper cookie on top to look like a hamburger patty.

- Make a circle of red frosting on top of the grasshopper cookie to look like the tomato or ketchup. Drizzle a little yellow frosting for mustard.

- Top generously with your green coconut to look like lettuce.

- Finish by placing second vanilla wafer on top as the top burger bun.



Events in May

National

Foster Care Month • Barbecue Month • Bike Month • Blood Pressure Month • Hamburger Month • Photograph Month • Salad Month • Older Americans Month

Weekly Celebrations:

- Nurse's Week** – first full week of month
- Wildflower Week** – week two
- National Bike Week** – third week
- National Police Week** – third week of month
- Emergency Medical Services Week** – fourth week of month

Congratulations

Karen Reckner of Big Rock! Her name was chosen from the entries received for correctly completing last month's Word Search Puzzle. For Her participation, she receives a fun bag of tree themed goodies! Thank you, Karen, for reading the *Kane County Farmer* and continue to watch each month for more great opportunities from the Kane County Farm Bureau.

Hamburgers

C A L I F O R N I A S I D B L U G L H W
 E S A E R G M R L V H G M U E T O W C I
 O N I O N X O O L C I L N N E I D N I S
 E Z A R Q M K J M E I Q D I J R M J W C
 E W Q G G E Q I L P A C Y S N F A M D O
 M I Y N T Y K P Q E L L I R G O H H N N
 D T Y C I L S T S R E P P E P F S E A S
 L J H V U F O I E C U T T E L A M A S I
 R U K U B M A D R O C E R U C S V G E N
 P C L E Z N J F V Y H D D W F T P K N S
 I H E N N R E G R U B M A H W H O M W O
 X F I O Q J B F L D M Y Y P I C K L E T
 A C Y P A T T Y A G O W E B P I B G W A
 C A H I Q H N M N X E C L L S S X L U M
 M I R T G E T U I V I R T L U U B E U O
 E U M S K O A R G R A L M G S Y R Y T T
 P S H P O M A K I N Z W G A D W G E N R
 H C T W Y M U P R T L A S O N R K F K C
 Q O U C G X F P O T U U N G O Y Y X Y M
 K T P A M S L I H P G X R E P W B M N Z

BEEF	GREASE	KIMCHI	PATTY	SALT
BUN	GRILL	LETTUCE	PEPPER	SANDWICH
CALIFORNIA	HAMBURGER	MAYONNAISE	PICKLE	SEASONINGS
FAST	HAMDOG	ONION	RECORD	TOMATO
GERMANY	KETCHUP	ORIGINAL	RICE	WISCONSIN

Name _____
 Address _____
 City _____ State _____ Zip _____
 Telephone (____) _____ Email _____ Age _____

Return to: Kane County Farm Bureau, 2N710 Randall Road, St Charles, IL 60174 by May 15, 2017 to be entered in our drawing for a hamburger-themed prize.

Women's Corner

By Louise Johnson
Women's Committee Chair



"The spring is sprung, the grass is riz,
I wonder where the boidie is.
They say the boidies on the wing,
But that's absoid. The wing is on
the boid."

- Anonymous

Now that warm weather is here, do not be too early planting outside! Some exceptions are carrots, broccoli, cauliflower, and leaf-lettuce. The

University of Illinois Extension has a website with helpful planting hints, including a list of hardiness: <https://web.extension.illinois.edu/vegguide/step06.cfm>

A Kane County native bee has been put on the endangered list. The "Rusty Patched Bumble Bee" is the first U.S. bee, of any kind, in the contiguous 48 states to be declared endangered. Kane County area conservation groups have united to restore habitat. Now is the

KANE COUNTY FARMER

time for all of us to help these bees, and other pollinators. Plant native pollinator plants, even in a small area in your yard. Your flower area should bloom throughout the summer. Then plan to leave the foliage uncut all winter to provide for overwintering bees. Bees need areas that provide nectar and pollen from flowers, nesting sites (underground and abandoned cavities or clumps of grasses), and overwintering sites for hibernating queens (undisturbed soil).

Here is a quick and easy and hearty recipe, for a cold day before summer arrives, from my friend, Elaine.

Meatball Subs

1 can jumbo, flaky biscuits
1 recipe of your favorite

meatballs
1 jar spaghetti sauce
1 pkg. (2 cups) mozzarella cheese

Spray 13x9x2 inch pan with cooking spray. Cut each biscuit into 8 pieces and put them evenly on bottom of pan. Place meatballs evenly in pan. Top

with spaghetti sauce and use spoon to spread sauce entirely over meatballs and biscuits. Top with mozzarella cheese.

Bake at 375 degrees for 30-40 minutes, until biscuits look golden. Let stand for 5 minutes then cut into 12 pieces and enjoy.

Grow the perfect lawn & garden by testing soil

A great service the Farm Bureau offers its members is soil testing. Make sure your soil is ready for spring planting. Visit www.kanecfb.com and click on benefits and services for a soil test form, or pick one up at the KCFB office. Deliver samples to Kane County Farm Bureau with payment. Results are sent directly to you by mail. Call the 630-584-8660 for more details. There are three different tests available. Prices listed are for Kane County Farm Bureau members. Ask us how to save even more when you upgrade your membership to a PLUS membership.

Why test your soil? Soil in its natural state is rarely fertile enough for the best growth of plants. Usually it is necessary to replenish the earth's store of plant nutrients to obtain the most vigorous lawn, the most abundant and brilliant flowers, the prettiest trees and shrubs and the greatest yield of fresh veggies.

When is the best time to test soil? Proper sampling is important to obtain accurate results. Samples can be taken any time during the warmer months, when soil temperatures are at least 55 degrees. If the soil is too wet to spade, rototill or hoe, it is generally too wet to take a sample. On the other hand, extremely dry soil should not be sampled either.

How often should I test? Ideally, soil should be tested every 3-5 years, more frequently with intensive use. Try to sample during the same season each time

for the best comparison.

Why does Farm Bureau provide this service? Kane County Farm Bureau was founded in 1912 as the Kane County Farm Improvement Association, to help farmers improve their production practices and increase the fertility and productivity of their soil. This program is an extension of that. It helps you take the guess work out of gardening!

Additional help for your lawn & garden is available through the University of Illinois Master Gardeners. Contact them at 630-584-6166 or visit their office at 535 Randall Rd., St. Charles.

Soil test costs

Basic PH Test

\$20 per sample for members
This test checks for soil pH, phosphorus, and potassium.

Lawn/Garden Test

\$30 per sample for members
Includes the basic test plus organic matter and recommendations on amount and timing of fertilizer.

Lawn/Garden Plus

\$50 per sample for members
Includes the Lawn & Garden test plus nutrients, iron, zinc, manganese, copper, sulfur and boron. This test also includes recommendations.



Thanks to our donors...

Our FOUNDATION is dedicated to providing agriculture based education for the next generation, and to meeting the challenge of providing food for a hungry planet. We look forward to continuing support for scholarships, along with local classrooms and teachers, leadership training, and community youth education through grants to local FFA Chapters and 4-H.



Kane County Farm Bureau
FOUNDATION
for the future of farms & food

The KCFB FOUNDATION offers its sincere appreciation to the following for their contributions. Names shown are pledges received from March 20 through April 20.

Through Harvest for ALL, KCFB members have contributed the equivalent of nearly 1.75 million meals to local food pantries.

Donor	Beneficiary
Stojan's Vegetables	Salvation Army of St. Charles, Salvation Army of DeKalb



FB News Brief

ILLINOIS' POPULATION DECLINE – For the third consecutive year, Illinois has lost more residents than any other state, losing 37,508 people in 2016. According to U.S. census data released Tuesday, the decline puts Illinois' population at the lowest it has been in nearly a decade. Illinois is among just eight states to lose residents. Similarly, of the country's 10 largest cities, Chicago was the only one to drop in population between 2015 and 2016. (*Chicago Tribune*)

One person's trash is another's treasure!

It's Spring time ... and that means time for spring cleaning. While you are cleaning out your house, barn or shed, keep in mind that "one person's trash is another man's treasure." Instead of tossing out that old antique or collector's item consider donating to the KCFB FOUNDATION Raffle and Auction at the Kane County Fair! Items often consist of antique pieces, craft items, framed artwork, and collectors' items

All proceeds raised by this raffle and silent auction go toward KCFB Foundation's effort to increase local scholarships and Ag-in-the-Classroom activities. By donating an item to businesses and individuals can receive FOOD > Forward yard signs and/or window clings to show the community their support of local agricultural education efforts. For 2017, the Foundation awarded over

\$14,000 in scholarships for college students pursuing careers in agriculture.

If you are interested in providing support for this year's bucket raffle and silent auction, or you know of a business or individual that might have an interest donating, please contact the KCFB office at (630) 584-8660 or feel free to stop by our office with your item(s)!

This Tractor Planter was donated for the 2016 Silent Auction and Bucket Raffle at the Kane County Fair by Farm Bureau member Dave Klussendorf of Batavia. Generous donations of craft and specialty items catch the eyes of fair attendees and encourage foundation donations in the form of raffle tickets.



Recycle Scrap for CASH

Steel, Copper, Aluminum & Cars

Trucking & Dumpster
Service Available

"Helping to keep America Picked up for 45 years"

Zimmerman Recycling, Inc.
301 Industrial Drive, DeKalb
(815) 756.8600

johnson
Water Conditioning Co.

Free
Water
Analysis

Water Softeners
Iron & Sulphur Filters
Drinking Water Systems
Sales-Rentals-Service
All Makes

Kane County Farm Bureau
members receive
10% discount on all
service work.



FACTORY DIRECT PRICES

◆◆◆◆ NO FIX - NO CHARGE ◆◆◆◆



630-584-5559



www.johnsonwater.com



Broken Bones and Farm Safety

By Kristi Van Oost



When I was in elementary school, it seemed like there was a different kid in some type of cast every other month. Now, being the kid with a cast on seemed to have a lot of benefits in my younger mind, as it meant everyone in the class would ask to sign your cast, offer to help you carry your things, and sit out at recess to talk to you. Basically, it was instant popularity. Much to my parents' joy, I never broke a bone or needed a cast when I was growing up, so I never got to be "that one kid with a cast" in school. In fact, I had never had a broken bone before...until now.

It happened about a month ago while working with my horse Avalon. Long story short, I ended up getting kicked by Avalon in my left arm, resulting in a broken ulna bone. Neither I nor my horse was really to blame, it was more of a "wrong place, wrong time" situation. As a result, I have been living with a large maroon colored cast that goes past my elbow, which is a surprisingly frustrating thing to live with.

It is no secret that farming can be a dangerous job, especially considering all the machinery, livestock, and climate farmers are exposed to every day. Actually, farm related accidents like mine are not uncommon at all. However, there are several safety measures farmers take to help prevent accidents from happening.

Recently we had our annual Touch-A-Tractor event. This year's event featured many long-time favorite activities, along with plenty of new additions, including a scaled down model of a grain bin with a rescue tube. Tubes like the one

seen in this display are used by fire and rescue professionals when someone needs to be rescued from a filled grain bin.

Did you know it takes only five seconds to become entrapped in the suction of flowing grain, which behaves like quicksand? Corn in a grain bin also has the ability to bridge, which is when grain clumps together and can develop a crust on the top surface. This crust appears solid, but it is unstable and may hide open voids below that develop as grain is removed. Bridged grain can collapse under a person's weight, resulting in the victim being buried by falling and shifting grain.

Specially designed rescue tubes are carefully placed around a victim and the corn or grain is removed from the inside of the tube, eventually freeing the victim. While the concept sounds simple, the entire process can take over an hour depending on how trapped the victim is. Rescues also require a great deal of training to avoid ending up with another person stuck. In fact, many fire departments work with local farmers to set up days for this type of rescue training.

Recently, eight local Fire Departments participated in a grain bin rescue training event at a Kane County farm in Elburn. The two-day training session gave fire rescue teams the opportunity to practice rescues in a real-life grain bin filled with corn, which makes the practices themselves seem more realistic. Some members of our Young Farmers Committee including myself watched the demonstration and cooked lunch for the participants after the exercise. After speaking with various members of the res-

Estimates – Jim Verhaeghe Sr. Call: 847 334 5730

I will relocate Honey Bee Swarms to my orchard for free. I am also interested in relocating nuisance Honey Bees that have moved into your walls or buildings. Help protect these pollinators who are so important for all our crops. Call or Text: 847 274 7773

WANTED

Want to buy vintage & used tools Call Chris – Also, we do cleanouts. Call: 630 550 7182

ENTRY LEVEL CUSTOMER SERVICE POSITION, 30-35 HOURS WEEKLY. MUST BE A SELF-STARTER & TEAM PLAYER. APPLICANTS SHOULD BE COMPUTER LITERATE WITH PLEASANT PHONE VOICE & MANNER. SOME OVERNIGHT TRAVEL REQUIRED. OFFICE IS LOCATED IN ST.CHARLES, EAST SIDE. CALL BOB TO DISCUSS – 630 377 5807

KANE COUNTY FARMER

cue teams, they all agreed on one thing ... it is much harder to walk on corn than it looks.

With planting season looming, now is as good of a time as any to remind everyone to stay safe. Share the road with farmers, use good farm safety practices, and maybe stay away from spooked horses.

Farm Toys at Farm Bureau

Kane County Farm Bureau has expanded its inventory of farm toys! We now have a selection of TOMY & ERTL vehicle toys and plastic farm animals. Choose from tractors, fire engines, trucks, tanks & more!

Proceeds benefit KCFB Foundation scholarships.

Winner's Choice Tractor Raffle winners

On April 9 at Touch-A-Tractor, the winners were drawn in the KCFB Foundation Winner's Choice Tractor Raffle. Volunteers sold over 1000 tickets, raising over \$8,000 for this year's raffle, which is the Foundation's biggest fundraiser. Proceeds from the raffle helped the Foundation award 14 scholarships, over \$14,000, to local students pursuing degrees in agriculture-related fields. Thank you to all who sold and purchased tickets and congratulations to the following winners:

Grand Prize: Ken Gustafson

Choice of: A 1953 Farmall Super C, a John Deere X350 riding lawn mower or \$2,500 cash

2nd prize: Carol Kenyon – \$500 in groceries

3rd prize: Erin Manheim – \$500 in fuel

4th prize: Elizabeth Turk – \$250 in Kane County Farm Bureau bucks

The winner in the FREE Pedal Tractor Drawing is 2-year-old Zion Creutz of Elgin!

What's new in the COUNTRY agencies?

St. Charles Agency, Bob Effner, Agency Manager

BOBBI BOSTON has been named the Financial Representative of the Month for March 2017 in the St. Charles/Elgin Agency, as announced by Agency Manager, Robert J. Effner, Sr., CLF®, LUTCF. Bobbi has provided tangible plans for addressing the immediate and long term insurance and financial security needs of his clients through COUNTRY Financial's diverse

products and services: Auto, Farm, Home, Life/Disability/Health/Annuities/Long Term Care, Retirement Planning, Business and Investments. Let Bobbi's expertise help you! Her contact information is: 2N710 Randall Rd., St. Charles, 60174; 630-485-5155; bobbi.boston@countryfinancial.com. Congratulations, Bobbi!

Aurora Agency, Kevin Gomes, Agency Manager

Zach Fox, Financial

Representative with the Aurora Agency, is our Financial Representative of the Month for March, 2017. Zach began his career with COUNTRY Financial in May of 2007 and services clients out of his office located at: 1920 Wilson Street, Batavia, 60510; 630-406-6900. Zach's professionalism and vast knowledge of auto, home, life, commercial and financial products make him a great person to do business with. Congratulations, Zach!

Kane County FFA members attend IFB & Affiliates Youth Conference

Three-hundred FFA members from 78 Illinois counties attended the 2017 Illinois Farm Bureau® & Affiliates Youth Conference, April 10-11 at the Embassy Suites, East Peoria. Kane County was represented by Burlington Central FFA students

Lexi Head and Elena Chapa. "Maximize," the theme of this year's conference, offered FFA members in their junior year of high school a unique opportunity for career and personal development. This year's attendees got the opportunity to network with

representatives from community colleges, universities, agriculture commodity groups, and the Illinois Farm Bureau and its family of companies at an Opportunity Fair. The conference also provided a series of breakout sessions that focused on personal growth, team building, advocacy, and leadership development. Participants also brought 598 non-perishable food items to the conference, which were donated to Midwest Food Bank as part of the Illinois Farm Bureau Young Leaders' Harvest for All program.

The annual two-day conference is sponsored by Illinois Farm Bureau and its affiliated companies, which include GROWMARK, COUNTRY Financial, Prairie Farms Dairy and the IAA Credit Union.



Two Kane County FFA members attended the IFB & Affiliates Youth Conference in East Peoria in April. They got the opportunity to network with representatives from colleges, universities, agriculture groups, and attend a series of breakout sessions that focused on personal growth, team building, advocacy, and leadership development. Pictured (left to right) are: Illinois State FFA President J.C. Campbell, Elena Chapa of Maple Park and Lexi Head of Elgin.

Recruiter of the Month

Each month we honor the person who signs the most members into our organization. This month, the honor goes to **Felipe Rocha!** Felipe has been a COUNTRY Financial Representative since August of 2011. His office is located at 541 N. Lake Street, Aurora. As a token of our appreciation, Felipe receives two tickets to Charlestowne Movie Theater. Thank you for your continued

support of the Kane County Farm Bureau and congratulations on your success!



Felipe Rocha

FB News Brief

ILLINOIS NO. 2 IN AG-MANUFACTURING JOBS – Illinois' business climate certainly faces its share of challenges. But with equipment makers such as Moline-based John Deere and Caterpillar in Peoria/Chicago, the state powered its way to the No. 2 spot in the nation when it comes to ag equipment-manufacturing jobs. The industry supports 321,000 jobs, and Illinois is home to 9 percent of those, second only to Texas' 16 percent. (FarmWeekNow.com)



For our recent Touch-A-Tractor event, a scaled down model of a grain bin with a rescue tube was made by GSI and AGCO and on display. Rescue tubes (the red tube in the center of the grain bin) like this one are used to rescue victims trapped in grain bins. Check out next month's Farmer to learn more about how this display bin is helping local fire departments learn more about grain bin safety. Be sure to visit the Kane County Farm Bureau barn at the Kane County Fair to see this model up close!

CLASSIFIED ADS

CLASSIFIED AD RATES

Classified advertising rates: 20 cents per word/\$20 minimum (60 words or less). DISCOUNTS for members: Associate members, 20%; Voting members, 30%; PLUS members, 40%. Advance payment requested. Ads due by the 15th of every month for the next issue. No advertising (classified or display) for financial or insurance services will be accepted. Call 630-584-8660.

FREE

Free barn cat mousers: Fixed and vaccinated felines to patrol your barn yards! The organic way to mouse control. respond: jspriet2@aol.com RE: Farm Bureau

SERVICES

Jim Verhaeghe & Sons, Inc. – Tree removal, tree trimming, & stump grinding. Backhoe work & Tile Lines. Fully insured – Free

Railroad 'Bungalows' for sale

Many sizes from 5'x5' to 10'x12'.

Steel and Concrete.

Call (630) 293-5444



Touch-A-Tractor brings farm life to suburbs

Hundreds of families and dozens of faithful volunteers enjoyed a day on the lawn at the Kane County Farm Bureau during the 12th Annual Touch-A-Tractor in April. Sunny skies and wonderful temperatures made Touch-A-Tractor the perfect way for families to welcome spring and learn about agriculture and how farmers provide food for a growing population.

Machinery on display included small antique tractors, large modern equipment, a 36 row planter, a combine and quad-trac tractor. Visitors of all ages enjoyed seeing baby chicks, a baby goat, lamb, and a calf. Other attractions included carnival style games, a pedal tractor track, a picture station, a “culvert crawl,” a percussion string, movies, and a toy tractor corral.

Touch-A-Tractor visitors helped raise college scholarship funds for the KCFB Foundation through the Winner’s Choice Tractor Raffle. This year, the Foundation awarded 14 students with scholarships to assist them in pursuing careers in agriculture. Many of the Foundation’s 2017 scholarship recipients and their families were on hand to volunteer and to recognize the accomplishments of these future Ag industry leaders.



2017



Top left: One of the newest additions to this year’s Touch-A-Tractor event was a percussion string. Thanks to donations from our members, children got to try their hand at making music with various types of old household items, including frying pans, baking sheets, and wooden meat tenderizers.

Top right: Our friends at AGCO Parts in Batavia brought along lots of fun carnival style games to Touch-A-Tractor this year. Among them was a ring toss game for children. Kids had a blast tossing brightly colored rings onto wooden pegs to win a prize.

Bottom left: Kaneland FFA members Jackson Kettlekamp and Kayla Baldrige enjoyed informing families about the Winner’s Choice raffle and helping children enter into the free pedal tractor raffle. Jackson, currently a senior at Kaneland High School, is a recipient of a 2017 Foundation Scholarship and was thrilled to be able to assist at this year’s event.

Bottom right: One of the family favorite activities at Touch-A-Tractor is learning about baby chicks. Ag Literacy Coordinator Suzi Myers held the chicks for the children and spoke with families about the different stages eggs go through while hatching.

Thank you...

Many volunteers contribute to the success of Touch-A-Tractor. The bringing together of families, the smiles on the faces of the kids...and the farmers, who are rightly proud of their profession, made it all worthwhile! Kane County Farm Bureau and our Foundation offer thanks to the following individuals for making equipment available, for demonstrations, help with set-up and staffing during the event and otherwise assisting in the success of this farm-city relations and Foundation fund-raising program. We apologize to anyone we inadvertently omitted. Without your help, Touch-A-Tractor would not be possible.

- Gladys Arnold
- Johnny Biddle
- Craig Bradley
- Frank Carlson
- Bill Collins
- Chris Collins
- Jerry Gaittsch
- Beth Gehrke
- Carolyn Gehrke
- Wayne Gehrke
- Bob Gehrke
- Lisa Geisler
- Chris Gould
- Louise Johnson
- Glenn Johnson
- Mike Kenyon
- Sara Lenkaitis
- Nan Long
- Megan Mingl
- Jim Nass
- Cecelia Nass
- Dale Pitstick
- Jim Reynolds
- Wayne Schneider
- Joe White
- Bonnie White

AGCO Parts Employees, Batavia

- Andrea Achermann
- Franky Achermann
- Kevin Bolander
- Eva Bright
- Laurie Cantu
- Reuven Chavira
- Connie Ferrer
- Will Huber
- Jennifer Kresl
- Belinda Meyer
- Jessica Pall
- Neal Rogers
- Carol Scott
- Brian Siorek
- Bill Smith
- Jelena Tabakovic
- Von Thomas
- Tammy Whiteside
- Cindy Woodward

AAIC (American Agricultural Insurance Company), Schaumburg

- Colleen Balek
- Kristen Gebel
- Mike Pappas
- Jan Rose
- Martin Surovy
- Doug Walls

Burlington Central FFA

- Alexis Head
- McKayla Peters
- Jenna Peters
- Jerod Metz
- Krysie Swanson
- Elena Chapa
- Jake Thompson

Kaneland FFA

- Kyla Baldrige
- Jessica Bowgren
- Hannah Garbacz
- Jackson Kettelkamp
- Elburn Lions Club
- For Providing Tractors...
- Eldon Gould
- Dan Heinrich
- Dan Kocher
- Larry Koesche
- Lim Lickteig
- A.C. McCartney Implement
- Bruce Nagel
- Jim O’Connell
- Randy Wilkening & Family

Kane County Food Hub project status report

Kane County’s “Growing for Kane” program (Ordinance No. 13-240) is the implementation mechanism for recommendations in the Growing for Kane Health Impact Assessment (HIA), a survey and study conducted in 2012-13. The HIA report provides guidance, recommended policy and actions for increasing the supply of locally grown healthy foods. These recommendations will benefit local farms and farmers, support healthy food options and lead to an overall improvement in public health.

One of the recommended actions to emerge from the HIA report was for Kane County to work with community partners to study the feasibility of locating a food hub within the county. Such an enterprise would meet the needs of local growers and food buyers, while also supporting communities with limited access to produce and other fresh foods. According to the USDA, a food hub is a business or organization that actively manages the aggregation, distribution, and/or marketing of source-identified agricultural products primarily from local and regional producers in order to satisfy wholesale, retail, and institutional demand. In 2015, Kane County formed a Project Team to draft a Food Hub Feasibility Study, which included key staff, community partners, and lead project consult-

ant, New Venture Advisors.

In 2016 Kane County completed the feasibility study which assessed market conditions, identified strategies to improve healthy food access and evaluated a hub’s overall financial viability. Beginning in 2017 the Project Team began working to identify a qualified operator to manage the food hub. The selected operator will also work with the Project Team’s consultant to prepare a customized and comprehensive business plan at no cost to the operator.

The Food Hub Project Team has undertaken the actions below to ensure the selection of a qualified operator and to provide the necessary resources and information to enable the future operator to be successful. Those near-term actions include conducting a Site Search Request for Information (RFI) and an Operator Request for Proposals (RFP).

Site Search Request for Information (RFI)

In February 2017, the County compiled a list of buildings that might be suitable to house a food hub, currently anticipated to be in operation within the next few years. The Food Hub Project Team made the list available to potential operators to assist them in developing their proposals. This list was generated from respondent submittals to Kane County’s Site Search RFI. It

was not intended to be a comprehensive listing of commercial spaces and operator candidates could consider other facilities that would best suit their needs and vision for a food hub enterprise in Kane County.

Respondents to the Site Search RFI were asked to consider a set of criteria typically required of the size and scale food hub detailed in the Project’s Feasibility Study. Those criteria included but were not limited to:

- Building size: Buildings of between 4,000 and 12,000 square feet with a ceiling height of 25’+.
- Basic operation: Space uses would include cold storage, dry storage, office and processing equipment.
- Docks and parking lot: 2-3 loading docks w/ a 20’ bay. Approximately 20 parking spaces and lot area to accommodate the turning radii of a semi-truck.

A link on the Food Hub website (<http://www.countyofkane.org/FDER/Pages/foodHub.asp>) contains a list of submitted facilities and a map of the site locations. At this time the Project Team is no longer accepting site submissions in response to the RFI.

Operator Request for Proposals (RFP)

The County is also seeking to identify and select an owner/operator for the food hub. The

Operator RFP sought farmers seeking to diversify or oversee a new line of business, current or aspiring entrepreneurs, non-for-profits with an aligned missions and desire to pursue an earned income strategy, food distribution businesses with a new commitment to local – to name just a few. The application deadline has now passed and the finalists will be named and interviewed soon, with a target date of summer 2017 for operator selection.

Operations
The County of Kane will have no long-term, formal role in the development, funding and operations of a food hub. The County’s role in overseeing the planning process will come to a close as soon as an operator is selected through the RFP. The eventual operator will sign a memorandum of understanding with the county affirming a set of commitments outlined in the RFP for both parties.

Additional background information on the Food Hub Project is available in reference documents on the County of Kane’s “Growing for Kane” Food Hub Project website. These include a Food Hub Feasibility Study Summary Report, the Growing for Kane Health Impact Assessment, the Growing for Kane Ordinance and the Food Hub Economic Impact Assessment. All can be found at <http://www.countyofkane.org/FDER/Pages/foodHub.aspx>.