

# Kane County Farmer



**KANE COUNTY  
FARM BUREAU®**  
Farm. Family. Food.™

Enhance the quality of life for member families;  
Promote agriculture, farms & food; and,  
Advocate good stewardship of our land and resources.

VOL. 87 NO. 10 OCTOBER 2022

## Save the date!

### Dedications & raffle drawing at KCFB on October 13

The KCFB Foundation will draw the Grand Prize winner in its annual Vintage Truck Raffle on Thursday, October 13 on the front lawn at Kane County Farm Bureau. The Foundation will also host its last drive-thru BBQ of the season, from 3-7 p.m. that day.

On October 13 we invite members to pick-up their pork chop/chicken dinners in our parking lot, then park their cars, bring their lawn chairs and stay for the raffle drawing. Last year's winner, Mark Harbison of Batavia was present at the drawing when his name was pulled from the raffle ticket drum. You could have the same good luck.

KCFB will also honor the legacy of leadership and volunteerism of this 100+ year old association on October 13 with a look back, and a look to the future. Nine trees on the Farm Bureau lawn will be dedicated to past leaders and to

farmer/members who have passed in recent years.

Looking to the future, the Farm Bureau will dedicate two new community educational resources, its newly installed Little Lending Library of farm and food themed books and resources, and its ILLINOIS Prairie Pollinator Rain Garden, which was expanded into the shape of Illinois with the help of over 170 volunteers early last month.

We invite you to come celebrate the past and look forward to the future. Call 630-584-8660 to reserve your BBQ dinners for October 13, and free to join us on the lawn for the Vintage Truck Raffle drawing!

#### Last Chance for Raffle Tickets!

Return your Vintage Truck Raffle ticket order form (order form on page 6) before Friday, October 7, or join us on the lawn at the KCFB on Thursday, October 13 to get your last minute Vintage Truck Raffle ticket.

The drawing will take place at 7:00 p.m. and will be preceded by a drive-thru BBQ from 3-7 (find out more at left). If you're coming (and staying) for dinner, we suggest you order meals now, and that you bring your lawn chairs! KCFB will have a tent set up on the lawn for the raffle drawing and dedications that will precede it, but we can not guarantee seating.



We hope to see you on the lawn on October 13 as we honor our past and look forward to the future. We thank you for your membership, your assistance with activities and programs and your support through fundraisers like these that help build a brighter future for farms, food and agriculture.

**Get your tickets for our  
Vintage Truck Raffle!**

## Supporting pollinators and the community

By Jamie Heflin,  
Midwest Groundcovers

The Kane County Farm Bureau recently expanded its pollinator rain garden located on their grounds along Randall Road in St. Charles. The 3,500 square foot garden is shaped like Illinois with major rivers lined with hardscapes serving as watercourses for storm events. The community turned out in force on September 1, 2022 to help the bureau plant/re-plant nearly 1,000 native prairie, pol-

linator, and wetland plants. Environmental consulting and planning professionals, ENCAP Inc., oversaw construction and installation of the garden.

The Bureau promotes the benefits of pollinator habitats for agricultural landscapes via a guide that outlines seed preparation, planting, suitable flowers and grasses, planting methods, and site management. This is a wonderful tool to help farmers reestablish pollinator habitats which are an integral com-

ponent to our food supply. Additionally, pollinator habitats incorporated into farmland improve water quality by reducing nutrients and sediment in runoff and provide forage for livestock. This new garden will serve as an educational outpost for both farmers and communi-

ty members.

Midwest Groundcovers and Midwest Trading were pleased to support the Kane County Farm Bureau in their installation of the ILLINOIS Prairie Pollinator Rain Garden. Midwest Trading donated 180  
*(continued on page 7)*

## Get your mums & pumpkins for bright color, fall fun

Mums, pumpkins, gourds, corn shocks and more are available at KCFB for a much needed pop of color and fun in your autumn landscape and decor.

This yearly fundraiser, with all proceeds benefitting Ag Literacy and scholarship programs, is sure to be your one-stop-shop for fall décor. Choose from straw bales, corn shocks, garden mums, Indian corn, small gourds, and all

sizes of pumpkins! We have it all while supplies last on our lawn and on the parking lot area directly in front of Costco.

Follow us on Facebook for updates or call (630) 584-8660 with any questions.



### October Featured Food Sausage and more sausage!

October is National Pork Month or as we like to call it, "Porktober". To celebrate, KCFB is offering your choice of pork sausage patties or links. Breakfast sausages are unlike all other sausages, largely thanks to the spice mix. The KCFB member price for a 5lb box of pork sausage patties from Inboden's (40 to a box/patties or 96 per box/links) is \$30. Plus Status members always receive a 5% discount on edible products at the Farm Bureau. Offered while supply lasts. Available at the Kane County Farm Bureau, Randall Rd. at Oak Street in St. Charles.

Volunteers dug in on the morning of Friday, September 1st, making short work of planting the garden.



Read a first-hand account of the ILLINOIS Prairie Pollinator Rain Garden installation from Steve Arnold, KCFB Manager, in the September 12 issue of *FarmWeek*. Become a Professional Member of KCFB to receive a subscription to *FarmWeek*, IFB's weekly publication for Illinois Farm Bureau members. Call KCFB at 630-584-8660 to find out more about Professional Membership.

### KCFB CALENDAR OCTOBER 2022

Mums and fall décor sale on the KCFB parking lot until sold out.

13 Dedication, Vintage Truck Raffle drawing and BBQ drive thru, 3-7pm

Board of Directors, 7pm

15 Agriculture Cmte, Kane County Bd.

31 Happy Halloween!

(All at KCFB, 2N710 Randall Rd., St. Charles unless otherwise noted)

# CAUTION, SLOW DOWN, SHARE THE ROAD!



As autumn harvesting begins across Northern Illinois the Kane County Farm Bureau reminds motorists to exercise CAUTION, SLOW DOWN and SHARE THE ROAD with large, slow moving farm equipment traveling between farmsteads and farm fields. A limited number of FREE 3' x 10' banners are available at the Farm Bureau office in St Charles to do just that. They would be great safety reminders to place in farm field corners, at fire stations, banks, township offices and grain elevators in Central and Western Kane County. Banners are available at the Kane County Farm Bureau on a first come, first served basis.

### Start planning your Thanksgiving feast!

Order a fresh, never frozen, Ho-Ka turkey from Kane County Farm Bureau for pick up at our St. Charles office the week of Thanksgiving. Watch next month's issue of the *Farmer* for an order form and pricing or call (630) 584-8660 for pricing and to order by phone.

# This month in Little Lending Library

Every month our Little Lending Library will have a special feature, book, or resource or all of the above! This will be our way of helping connect with the community whether they are KCFB members or not. No matter who you are or where you are from, agriculture is everywhere and plays a crucial role in your daily life. It is our hope that through our (not so) Little Lending Library, we can help bridge the gap between consumer and farmers and help to make a positive impact in the name of agriculture.



## Little Lending Library

will include FREE color-copied handouts and information about the plants and resources used for our Illinois Pollinator Rain-Garden project from last month. And hey – while you're here, take your map and walk through the garden itself! The book spotlight for our young readers will be *Pick-A-Pumpkin* by Patricia Toht

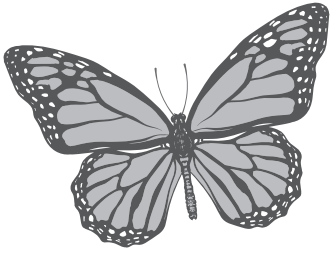
and in addition we will have copies of our Pumpkin-AgMags for children and their parents to enjoy at their leisure. Supplies are limited and there are no guarantees so make like a tree and leaf the house today because it may be gone tomorrow!



# This month in the ILLINOIS Prairie Pollinator Rain Garden

The plants are settling nicely in the garden and benefited from September 11's generous rains. The garden performed well in directing rainfall and runoff down the stone path "rivers", to the southern IL wetlands portion of the garden. There's a video on our Facebook page of that water-logged event.

Blooming right now is *Liatris aspera* (Rough blazingstar), *Lobelia siphilitica* (Great blue lobelia) and a few



blooms from some bold *Tradescantia virginiana* (Spiderwort). These blooms have attracted attention from bumblebees, monarch butterflies and some opportunistic

dragonflies. The real job of the plants now is to settle in and root well in preparation of upcoming winter, and they appear to be doing just that.

## KANE COUNTY FARM BUREAU BOARD ATTENDANCE JANUARY 2022 THRU DECEMBER 2022

	JAN	FEB	MAR	APR	MAY	JUN	JULY	AUG	SEP	OCT	NOV	DEC
C. BRADLEY	X	X	X	X	X	X	X	X	X	X	X	X
B. COLLINS	X	X	X	X	X	X	X	X	X	X	X	X
C. COLLINS	X	X	X	X	X	X	X	X	X	X	X	X
K. ENGEL <sup>^</sup>						X	*	*	*			
J. ENGEL		X	X	X	*	X	X	X	*			
G. GAITSCH	*	X	*	X	X	X	X	X	X	X	X	X
B. GEHRKE	*	X		X	X	X	X	X	X	X	X	X
W. KECK	X	X	*	X	X	X	X	X	X	X	X	X
M. KENYON	X	X	X	X	X	X	X	X	X	X	X	X
K. KETTLEKAMP	X	*	X	X	X	X	X	X	X	X	X	X
D. LEHRER	*	*	*	*	*	*	*	*	*	*	*	*
A. LENKAITIS			*		X		*	X				
D. PITSTICK	X	X	X	X	X	X	X	X	X	X	X	X
W. SCHNEIDER	X	X	X	X	X	X	X	X	X	X	X	X
J. WHITE	X	X	X	X	X	X	X	X	X	X	X	X

\* Attendance by electronic means. ^ Elected to Board June 2022.

## Kane County Farmer KANE COUNTY FARM BUREAU PUBLISHED MONTHLY

Steven J. Arnold, Editor  
 Audre Pack, Bookkeeper  
 Elizabeth Polovin, Member Services Coordinator  
 Kelcee Miller, Development & Ag Literacy Program Coordinator  
 Alice Macha, Communications Coordinator  
 Jenna Rowe, Office Assistant

OFFICE: Randall Rd. between Routes 64 & 38  
 Address: 2N710 Randall Rd., St. Charles  
 PHONE: 630-584-8660  
 info@kanecfb.com www.kanecfb.com  
 OFFICE HOURS: 8:30-4:30 Monday through Friday  
 (USPS No. 289700)  
 POSTMASTER: Send address changes to Kane County Farmer  
 2N710 Randall Rd., St. Charles, IL 60174  
 Periodical Postage • Paid to St. Charles, IL 60174  
 Year Subscription: \$2.00

**Joe White**  
 President  
 47W727 Main St. Rd.  
 Elburn, IL 60119  
 630-878-1726

**Wayne Schneider**  
 Vice President  
 721 Lindsay Lane  
 West Dundee, IL 60118  
 847-428-0488

**Chris Collins**  
 Secretary/Treasurer  
 1143 Anderson  
 Elburn, IL 60119  
 630-934-4642

**Craig Bradley**  
 37W791 Orchard Lane  
 Elgin, IL 60124  
 847-888-2380

**Bill Collins**  
 1125 Lewis Rd.  
 Geneva, IL 60134  
 630-484-6852

**Joe Engel**  
 15N720 Walker Rd.  
 Hampshire, IL 60140  
 847-347-5561

**Keith Engel**  
 15N587 Walker Rd.  
 Hampshire, IL 60140  
 630-640-3665

**Gerald Gaitsch**  
 10613 Brittany Ave.  
 Huntley, IL 60142  
 847-669-2003

**Beth Gehrke**  
 12N860 US Hwy. 20  
 Elgin, IL 60124  
 847-697-2538

**William Keck**  
 P.O. Box 281  
 Sugar Grove, IL 60554  
 (630) 466-4030

**Mike Kenyon**  
 1250 E. Main St.  
 South Elgin, IL 60177  
 847-741-1818

**Karl Kettelkamp**  
 47W407 Main Street Rd.  
 Elburn, IL 60119  
 630-365-2713

**Andrew Lenkaitis**  
 6N707 Corron Rd.  
 St. Charles, IL 60175  
 630-513-9980

**Donna Lehrer**  
 7S027 Jericho Rd.  
 Big Rock, IL 60511  
 331-254-0334

**Dale Pitstick**  
 2N118 Pouley Rd.  
 Elburn, IL 60119  
 630-816-0223

Welcome new members

You receive the Kane County Farmer because you are a Farm Bureau member. If you are a farm operator or owner, you benefit from a local, state and national organization committed to agriculture and your way of life.

If you do not have direct ties to farming, your membership helps promote local farms and farming, encourages wise use of our limited natural resources and preserves farmland and our agricultural heritage while allowing you to enjoy COUNTRY insurance and the many benefits of one of Illinois' premier membership organizations.

We appreciate your membership and continued support and we welcome your comments on the content of the Farmer. We encourage you to make recommendations about farm, home, food, natural resources, renewable energy or agricultural heritage and history-related topics for inclusion in future issues of the Farmer.

**UNITED STATES POSTAL SERVICE® (All Periodicals Publications Except Requester Publications)**

1. Publication Title: KANE COUNTY FARMER  
 2. Publication Number: 289700  
 3. Filing Date: 09/13/2022  
 4. Issue Frequency: MONTHLY  
 5. Number of Issues Published Annually: 12  
 6. Annual Subscription Price: \$2  
 7. Complete Mailing Address of Known Office of Publication (Not printer) (Street, city, county, state, and ZIP+4®): 2N710 RANDALL RD, SAINT CHARLES, KANE, ILLINOIS 60174  
 8. Complete Mailing Address of Headquarters or General Business Office of Publisher (Not printer): 2N710 RANDALL RD, SAINT CHARLES IL 60174  
 9. Full Names and Complete Mailing Addresses of Publisher, Editor, and Managing Editor (Do not leave blank):  
 Publisher (Name and complete mailing address): STEVE ARNOLD, KANE COUNTY FARMER, 2N710 RANDALL RD, SAINT CHARLES, IL 60174  
 Editor (Name and complete mailing address): STEVE ARNOLD, KANE COUNTY FARMER, 2N710 RANDALL RD, SAINT CHARLES IL 60174  
 Managing Editor (Name and complete mailing address): STEVE ARNOLD, KANE COUNTY FARMER, 2N710 RANDALL RD, SAINT CHARLES, IL 60174  
 10. Owner (Do not leave blank. If the publication is owned by a corporation, give the name and address of the corporation immediately followed by the names and addresses of all stockholders owning or holding 1 percent or more of the total amount of stock. If not owned by a corporation, give the names and addresses of the individual owners. If owned by a partnership or other unincorporated firm, give its name and address as well as those of each individual owner. If the publication is published by a nonprofit organization, give its name and address.)  
 Full Name: KANE COUNTY FARM BUREAU, Complete Mailing Address: 2N710 RANDALL RD., SAINT CHARLES IL 60174  
 KANE COUNTY FARM BUREAU, 2N710 RANDALL RD., SAINT CHARLES IL 60174  
 KANE COUNTY FARM BUREAU, 2N710 RANDALL RD., SAINT CHARLES IL 60174  
 11. Known Bondholders, Mortgagees, and Other Security Holders Owning or Holding 1 Percent or More of Total Amount of Bonds, Mortgages, or Other Securities. If none, check box  None  
 Full Name: Complete Mailing Address:  
 12. Tax Status (For completion by nonprofit organizations authorized to mail at nonprofit rates) (Check one)  
 Has Not Changed During Preceding 12 Months  
 Has Changed During Preceding 12 Months (Publisher must submit explanation of change with this statement)  
 13. Publication Title: KANE COUNTY FARM BUREAU / KANE COUNTY FARMER  
 14. Issue Date for Circulation Data Below: 09/12/2022  
 15. Extent and Nature of Circulation  

		Average No. Copies Each Issue During Preceding 12 Months	No. Copies of Single Issue Published Nearest to Filing Date
a. Total Number of Copies (Net press run)			
b. Paid Circulation (By Mail and Outside the Mail)	(1) Mailed Outside-County Paid Subscriptions Stated on PS Form 3541 (Include paid distribution above nominal rate, advertiser's proof copies, and exchange copies)	3255	3136
	(2) Mailed In-County Paid Subscriptions Stated on PS Form 3541 (Include paid distribution above nominal rate, advertiser's proof copies, and exchange copies)	8989	8708
	(3) Paid Distribution Outside the Mails Including Sales Through Dealers and Carriers, Street Vendors, Counter Sales, and Other Paid Distribution Outside USPS®	0	0
	(4) Paid Distribution by Other Classes of Mail Through the USPS (e.g., First-Class Mail®)	0	0
c. Total Paid Distribution (Sum of 15b (1), (2), (3), and (4))		12244	11844
d. Free or Nominal Rate Distribution (By Mail and Outside the Mail)	(1) Free or Nominal Rate Outside-County Copies included on PS Form 3541	0	0
	(2) Free or Nominal Rate In-County Copies included on PS Form 3541	0	0
	(3) Free or Nominal Rate Copies Mailed at Other Classes Through the USPS (e.g., First-Class Mail)	0	0
	(4) Free or Nominal Rate Distribution Outside the Mail (Carriers or other means)	20	20
e. Total Free or Nominal Rate Distribution (Sum of 15d (1), (2), (3) and (4))		20	20
f. Total Distribution (Sum of 15c and 15e)		12264	11864
g. Copies not Distributed (See Instructions to Publishers #4 (page #3))		78	78
h. Total (Sum of 15f and g)		12342	11942
i. Percent Paid (15c divided by 15f times 100)		99.84	99.83

 16. Electronic Copy Circulation  

		Average No. Copies Each Issue During Preceding 12 Months	No. Copies of Single Issue Published Nearest to Filing Date
a. Paid Electronic Copies		0	0
b. Total Paid Print Copies (Line 15c) + Paid Electronic Copies (Line 16a)		12244	0
c. Total Print Distribution (Line 15f) + Paid Electronic Copies (Line 16a)		12264	11864
d. Percent Paid (Both Print & Electronic Copies) (16b divided by 16c x 100)			

 I certify that 95% of all my distributed copies (electronic and print) are paid above a nominal price.  
 17. Publication of Statement of Ownership  
 If the publication is a general publication, publication of this statement is required. Will be printed in the OCTOBER issue of this publication.  Publication not required.  
 18. Signature and Title of Editor, Publisher, Business Manager, or Owner: *Steve Arnold Editor* Date: 9-13-2022  
 I certify that all information furnished on this form is true and complete. I understand that anyone who furnishes false or misleading information on this form or who omits material or information requested on the form may be subject to criminal sanctions (including fines and imprisonment) and/or civil sanctions (including civil penalties).

## Last Drive-thru BBQ for KCFB Foundation

Our last drive-thru BBQ event for this year, to benefit the college scholarships programs of the KCFB Foundation, is Thursday, October 13th on the parking lot at the Farm Bureau on Randall Rd. in St. Charles.

From 3 pm to 7 pm, drive-thru diners can choose from 3 meals at \$16 each (if paid in advance), a 2 pork chop meal; or 2 chicken quarters; or a 1 pork chop, 1 chicken quarter combo. All meals will come with baked beans, coleslaw, apple sauce, a roll and butter.

The Farm Bureau parking lot will be set up for fast and convenient drive-thru service – order for the entire family! Meals will also be available on a limited basis for drive-ups without a reservation at a slightly higher, \$17 price.

All sales will benefit the KCFB Foundation and meal reservation, and pre-payment is encouraged. To reserve your meals and pre-pay, return the form on page 3 or call KCFB at 630-584-8660.

**TRELLIS**  
 Pet Food • Propane  
 Salt • Delivery

Your local source for feed, supplies, and so much more!

St Charles and Wasco 630-584-2024

# Test your well in October! Private well test kits available Oct. 17-28

The Kane County Farm Bureau and Kane/DuPage Soil and Water Conservation District offer water testing in October this year. A high quality water supply is vital for families, and well testing helps provide peace of mind and identifies potential problem areas for homeowners of Kane County.

The well testing program has three simple steps: (1) pick up and pay for a water test kit at Kane County Farm Bureau between Monday, Oct. 17, and Friday, Oct. 28; (2) at home, collect a water sample as close as possible to turning it in; and (3) return the water sample to KCFB or Kane/DuPage Soil &

Water Conservation District on Monday, October 31. Results will be mailed to your home.

Three kits are available and prices vary:

### A. Basic Package (Nitrate Package) – \$45.00

Test for nitrate, nitrite, ammonia, chloride, sulfate, soluble phosphorus, silica and specific conductivity.

### B. Metals – \$95.00

Test for 23 different metals. All kits include detailed sampling instructions. KCFB or Kane/DuPage Soil and Water Conservation District can provide additional information about each test.

The certified lab at Heidelberg College Water Quality Laboratory in Tiffin, OH tests all samples. The lab is nationally recognized for its work testing rivers and lakes.

Mark your calendar for a FALL water test or call Kane County Farm Bureau at (630) 584-8660 with questions.



# Road safety hinges on patience, good judgement

Along with combines in the fields, tractors, grain carts and trucks are a familiar sight on rural Kane County roads during fall harvest. Sometimes the trucks may be loaded on the roadside. Equipment used in farm fields is generally equipped with tracks or flotation tires to reduce soil compaction and allow operations in less than ideal conditions. Trucks, designed for road use, are not similarly equipped. Loading them in wet fields generally results in them getting stuck and/or bringing mud on the roads.

Kane County Farm Bureau urges all drivers on rural roads to SLOW DOWN during this harvest season. If you see farm equipment, flashing lights or Slow Moving Vehicle emblems on the road please exercise CAUTION and let's let everyone work safe and arrive safely!

There is much to improve in road safety. The federal government updated its report Federal Highway Traffic Safety Policies: Impacts and Opportunities in July 2019. It explained "the vast majority of crashes are due to driver behaviors..., and these are errors of judgment rather than of ignorance or lack of skill." The report gave a common statistic: "as many as 90% of road deaths are due at least in part to driver error or misbehavior." The same report cited motor vehicle crash-

es as a leading cause of death for Americans overall, and the number one cause of death for teenagers. It also said "motor vehicle crashes are estimated to have cost some \$242 billion in 2010 in lost productivity, medical costs, legal costs, property damage, and time lost in congestion caused by crashes." Last, data showed Illinois resi-

dents in rural areas are more likely to die in car crashes than residents in urban areas.

This month, the Kane County Farmer offers reminders and tips for changing our driving habits before we have more negative consequences, whether a dangerous crash or a traffic ticket. Read below and get tips for motorists.

## Tips for Motorists

**SHARE THE ROAD SAFELY** with farm equipment. He is moving the planter to the next field. She is hauling corn to the grain elevator. Farm equipment travels at a slow rate of speed and may be wider than other vehicles. If road and shoulder conditions are safe, the farmer may try to pull over to let you pass safely.

*Above all, slow down and be patient.*

- ▶ Reduce speed when encountering farm equipment on public roads. Flashing amber lights mean "caution."
- ▶ Slow down when you see the Slow Moving Vehicle Emblem—the orange and red reflective triangle warns you that the tractor or combine travels at a slow rate of speed.
- ▶ Keep a safe distance from the farm equipment so the farmer can see you. If you can't see his mirrors, he can't see you.
- ▶ Pass wide, large farm equipment only if you know conditions are safe and you are sure the farmer will not be making a left-hand turn. Be cautious when pulling back in.
- ▶ It is illegal to pass in a no passing lane or within 100 feet of an intersection, railroad crossing, or bridge.
- ▶ Be prepared to yield to wide equipment.
- ▶ Always wear a safety belt and heed the road's speed limit.
- ▶ Watch for the farmer's indication of a turn. Newer equipment has one or more amber lights flashing rapidly to indicate a turn. Older equipment is typically not equipped with turn signals so watch for the farmer's hand signals.

Endorsed by **JESSE WHITE**  
SECRETARY OF STATE  
Illinois Sheriff's Association  
Illinois High School & College  
Driver Education Association, Inc.

FSKY5428WM0409



Like us on Facebook for a weekly helping of humor – our Friday Farming Funnies. You'll also find the latest info about our new Little Lending Library and ILLINOIS Prairie Pollinator Rain Garden, local farming folks and news and upcoming events and specials at Kane County Farm Bureau.



# Letters of thanks from scholarship recipients

Thanks to the generosity of our members and donors, the KCFB Foundation awarded \$27,000 in college scholarships for the 2022-23 school year. Scholarship recipients and their parents were recognized at an awards ceremony on July 15. Printed below are expressions of thanks received from some of this year's 18 scholarship recipients. The KCFB Foundation will publish one or two of these messages per month to share with our readers and donors the gratitude expressed by these students for YOUR generosity.

\*\*\*\*\*

Dear Kane County Farm Bureau Foundation –

Recently I was notified that I am the recipient of the AGCO Parts Platinum Scholarship. I wanted to write to you and say thank you so much for the support. This scholarship is going to alleviate some of my financial stress and will allow me to allocate more of my time and focus to accomplishing my dream of becoming a veterinarian.

I am excited to one day graduate and then give back to the Farm Bureau. Thank you again!

Sincerely,  
Valentina Poggi

\*\*\*\*\*

Dear Kane County Farm Bureau Foundation –

I am writing to thank you for your generous \$1,000 AGCO Global Women's Network Scholarship. I feel very honored and appreciative to have received this scholarship. This fall, I will be attending Truman State University in Kirksville, MO. I plan to major in biology and minor in Animal Science. After earning my B.S., I will attend veterinary school to eventually gain my Doctorate in Veterinary Medicine. This scholarship will help me greatly by lessening the financial burden of 8 years of schooling. Thank you, once again, for your generosity.

Celeste Cummings

# Letter from long-time KCFB member

Dear friends at my local FB office with an extra nod to anyone who knew my parents –

Thank you for another great edition of the Kane County Farmer. I always read with a mix of emotions. Throughout my life as the daughter of farmers, I've always believed that they are the salt of the earth. My parents were the embodiment of the farmers who are generous, kind, hopeful and wise people.

I try to live up to their examples and to their teachings every day. They gave of their time, talents and treasure because it was the right thing to do. They also expressed gratitude for the blessings they received.

Acts 20:35

God bless all of our farmers with safety through this harvest season.

Sincerely,  
Kathy Chwee

# Farm toy of the month

Future farmers will have fun with this 20 piece farm toy playset from Tomy, recommended for ages 3 and up. The Case IH red set includes truck, combine, hay wagon, horses and hauler and much more. Regular price is \$25.76, but during the month of October, Farm Bureau members get 10% off. Stop by and get your toy today. We have toys for grown-ups too – raffle tickets

are available for our Vintage Truck Raffle drawing. You could win a beautiful blue and white 1971 Chevy C10 pickup! See you soon!



Kane County Farm Bureau  
**FOUNDATION**  
*for the future of farms & food*

**October 13**  
**Drive Thru BBQ**  
**Fundraiser**

**Please reserve:**

Pork chop dinners     Chicken quarter dinners  
 Pork chop/chicken combo dinners

**Please enclose payment of \$16 per dinner. Make checks payable to Kane County Farm Bureau Foundation**

Name \_\_\_\_\_

Address \_\_\_\_\_

City, State, Zip \_\_\_\_\_

Visa / MC \_\_\_\_\_ Exp. date \_\_\_\_ / \_\_\_\_

CRV \_\_\_\_\_ Phone (\_\_\_\_) \_\_\_\_\_

**Return to: KCFB Foundation • 2N710 Randall Rd., St. Charles, IL 60174 or call 630-584-8660.**

## AG LITERACY CORNER

By Kelcee Miller, Development & Ag Literacy Program Coordinator



### Hello Kane County!

I don't know about you, but fall is one of my favorite seasons! The crisp cool air, the colorful leaves that dance in the wind and rolling golden landscapes, and let's face it – all of the fall festivities, warm coffee (#PSL), sweet treats and decorations too!

As I've grown, I like to look for metaphors or positive life

lessons in almost in every given situation. A friend of mine had recently shared a post on social media that read, "The trees are about to show us how lovely it is to let things go." Since reading that post, I cannot stop thinking about how much truth there is to such a simple quote.

How often do we hang onto things that truly do not deserve another moment of our attention? Stop and think for a

moment, how often do we hang onto things that drain our energy instead of adding to it? How often do we allow things weigh us down that have no reason to be carried in the first place? I know we are all guilty of hanging onto things outside of our control and allowing that "thing" to live rent free in our minds and by doing so we miss out on other opportunities and moments here in the present. Time is a precious gift that is limited. It's a currency we cannot get back, so we cannot allow ourselves to hold onto those things that weigh us down, stress us out, and do not serve us purposefully in the present moment.

Master the art of controlling

Library and check out *By the Light of the Harvest Moon*. The Kane County Farm Bureau Library was made possible by Bob Konen and Dean Dunn, and later supported by the Bob Konen Family.



*By the Light of the Harvest Moon* by Harriet Ziefert, illustrated by Mark Jones

ful swirl and twirl of warm orange, yellow, and crimson until the gusts subside in the pumpkin patch and the leaf people emerge from the pile. The grown-ups begin to prepare for their harvest surprise while their children and their pets play on a nearby hillside, bobbing for apples, juggling acorns, and their favorite game of all, stacking pumpkins! It's all fun and games until the pumpkins roll down the hill right in the middle of a sweet surprise!

To see the colorful and sweet harvest surprise for yourself, come in and visit our FREE Kane County Farm Bureau

the things we can control and let the rest go. Much like the trees, when we learn to let things go the result is beautiful and allows the space for something fruitful to grow. Will it be easy at first? No. Will it be challenging? Yes, but it will worth it.

Les Brown once said, "Every day, we can either choose to be a victim or we can choose to live life victoriously." And I think a

similar lesson applies here too. In life we have choices every single day and how we act will determine the outcomes of our lives. It is up to us to decide the kind of life we want to live. Learn to let things go that are no longer serving you and live your life to your fullest potential.

**Happy October!**

## IL Ag in the Classroom grants due Oct. 14

Teachers, you still have some time to take advantage of these awesome grant opportunities for this school year through Illinois Agriculture in the Classroom! Educators may apply for \$250 in ag-accurate books curated by IAITC staff or \$300 for a new ag-themed project for your classroom.

**Book Grant form found here: <http://iaitc.co/bookgrants>**  
**Project Grant form found here: <http://iaitc.co/project-grants>**

**Applications due Friday, October 14, 2022.** For more information, contact Kelcee at 630-584-8660.



## Book of the month

Have you ever wondered what kind of magic happens under a harvest moon when you go to bed at night?

The October book of the month, *By the Light of the Harvest Moon*, written by Harriet Ziefert and illustrated by Mark Jones, show readers beautiful surprises on every page. After a long day of work, the farmer on Apple Hill Farm heads toward the house to call it a night. As he gets ready to go to sleep, the excitement on the farm is about to unfold under the light of the harvest moon.

When the wind picks up, the leaves begin to dance in a color-

## Lesson-In-A-Bucket

Are you an elementary teacher in Kane County? Are you looking for fun and innovative ways to bridge the gap between agriculture and your classroom? Look no further than Lesson-In-A-Bucket, NEW this year at KCFB!

We are lending monthly themed ag-lessons in a 5-gallon chore bucket – yes just like the ones you would find on the farm! Each bucket is full of themed books, activities, and Ag-Mags about given topics such as dairy, pollinators, apples!

This month's theme is pumpkins! K-5 teachers will receive a chore bucket with a classroom set of 30 Pumpkins Ag-Mags that pairs perfectly with the Pumpkin Ag-Venture that helps students apply their science and mathematics, along with some pumpkin fun! In addition, teachers will find pumpkin themed activities such as Exploding Pumpkin, which ties science and agriculture together as it is designed to help students learn about exothermic reac-

tions all while learning about pumpkins! Looking for ways to tie STEM into your classroom? Have your students learn about simple machines and test their creativity with Pumpkin Catapult!

Each of the 5 lesson plans lays out the learning blueprint including target grade, subject, length of lesson, objective, materials needed, standards, suggested readings (yes – all that you will find in the bucket!) as well as instructions from beginning to end.

The learning doesn't stop there – double-sided posters complete with facts about Illinois grown apples on one side and pumpkins on the other will keep students learning all season long with the changing of the seasons and fall decorations that will soon be strung about.

We hope you are excited – select us as the pick of the patch and allow us to help bring agriculture into your classroom this fall!

Call Kelcee at 630-584-8660 to reserve your bucket today!

## Helping you protect what matters most



Jeffrey Orman  
Agency Manager  
St. Charles  
630-584-0001



Bob Effner  
St. Charles  
630-588-2002



Bobbi Boston  
St. Charles  
630-485-5155



Kelly Landorf  
St. Charles  
630-762-1328



Jeff Jones  
St. Charles  
630-492-5293



Norma Grathoff  
St. Charles  
630-492-5324



Donna Tonovitz  
St. Charles  
630-549-7694



Orazio Difruscolo  
St. Charles  
630-549-7696



Ashraf Gerges  
Aurora  
630-898-3750



Edward Stuehm  
Geneva  
630-845-8245



Michael O'Brien  
Geneva  
630-762-0852



Victor Alvarado  
Elgin  
847-742-0003



Luke Fawkes  
Elgin  
847-742-0002



Sherry Lochen  
Elgin  
847-742-0004



Bob Riedel  
West Dundee  
847-428-5434



Gary Bolger  
West Dundee  
847-531-6110



Sherri Schramer  
Elburn  
630-365-9500



Dominick Davero  
Elburn  
630-365-3737



Charles Quick  
Hampshire  
847-683-2100



David Berreles  
Hampshire  
630-683-2100

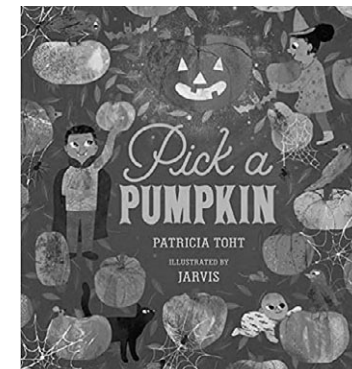


Dan Cooper  
Sugar Grove  
630-466-9600



Ted Schuster  
Sugar Grove  
630-466-9600

"COUNTRY Financial" is the marketing name for the COUNTRY Financial family of affiliated companies (collectively, "COUNTRY"), which include COUNTRY Life Insurance Company, COUNTRY Mutual Insurance Company, and their respective subsidiaries, located in Bloomington, Illinois.  
1220-509HC\_07683-7/26/2022



## Back-to-school with Ag Literacy

Thank you to Michelle Baldwin from Ronald O'Neal Elementary in Elgin, for contacting Kelcee last month for FREE Back-to-School with Agriculture posters, Apple and Pumpkin Ag-Mags, and 2022-23 Illinois Agriculture in the Classroom themed calendars! Teachers, want to incorporate agriculture into your classroom or school? Contact Kelcee at

630-584-8660 for more details or to subscribe to her monthly newsletter!





# Farm Facts & Fun

Compiled by Kelcee Miller, Ag Literacy Coordinator



A farmer's job goes beyond planting, growing, and harvesting crops. They are responsible for the land their crops grow in, the water their crops and livestock need, and the wildlife that helps the ecosystem flourish. They care for the natural resources that Mother Nature provides, and are doing all they can to ensure they're leaving the resources better than before for generations to come.

### Farmers use a variety of best practices to ensure the health of our water, such as:

- Cover crops, which hold onto excess nutrients in the fields and prevent them from running off.
- Waterways and saturated buffer, which keep soil and nutrients in the fields.
- Edge-of-field practices, like woodchip bioreactors, treat the water and remove excess nitrogen before it leaves the field.

### Farmers protect their soil by:

- Reducing tillage and using cover crops to improve the physical structure and biological health of the soil.
- Using practices that allow air, water, and insects to move through the soil, break down organic matter, and enhance nutrient cycling.
- Planting grassy buffers and terraces to keep the soil in place, and to prevent erosion and nutrient loss.

### You care about what your family eats. Farmers do, too. Providing plenty of healthy food is important to Illinois farmers. That starts with caring for the environment in which that food is grown. Farmers:

- Care for the soil, water, air, and wildlife that impact your food.
- Make educated decisions to preserve and enhance our existing natural resources to make them more productive and healthy.
- Remain dedicated every day of the year by analyzing data, learning from their experiences, and making continuous improvements for the next generation of farmers.

## An autumn treat – Caramel apple bites

- 2 green apples
- 1 pkg mini pretzel twists
- 1 pkg Rolo candy
- Toothpicks

### Instructions

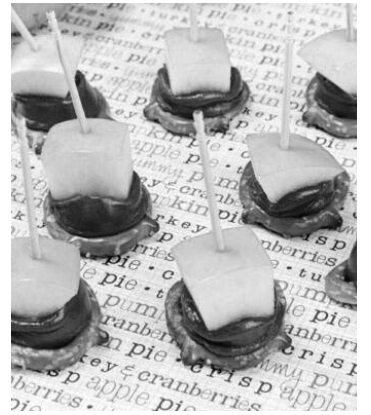
Pre-heat oven to 250 degrees  
 On a baking sheet, lay out pretzels in a single layer and place a Rolo candy on each pretzel  
 Place baking sheet in the oven for about 3-4 minutes or until the candy is softened, but not melted

Chop the apple into small chunks (squeeze a little lemon juice on them if you would like to help keep them from turning brown)

Place one apple chunk on the end of a toothpick and push into one of the Rolo pretzels. Repeat until all the Rolo pretzels have apples.

Serve & enjoy!

Find this easy fall snack idea and more here: <https://easyfamilyrecipeideas.com/caramel-apple-bites-recipe/>



## DIY Fall leaves wreath

### Supplies

- Plain paper plates
- Fake or real fall leaves
- School glue
- Ribbon
- Scissors
- Hole punch

### Instructions

Fold the paper plate in half and cut a half-circle out of the straight end to remove the center of the plate.  
 Open up the plate and cut a hole at the top with the hole punch about half-inch from the top (this will be the top of the

wreath)

Add glue to the spaces on your wreath where you want to put the leaves and try to fill in any white spaces (don't be afraid to overlap and layer your leaves)!

Cut a strip of ribbon and thread it through the hole at the top of the paper plate wreath. Tie the two ends into a knot, leaving a loop that can be used to hang and admire!

This craft and other fall craft ideas may be found here: <https://www.honeyandlime.co/fall-leaves-wreath-craft-for-kids/>

## DIY FALL LEAVES WREATH FOR KIDS



On a sunny Wednesday evening in late August, KCFB Young Leader Secretary, Joseph White of Batavia and KCFB Manager, Steve Arnold worked diligently to install the two large wooden posts that now hold and support the NEW Little Lending Library located underneath the windmill at 2N710 Randall Road, St. Charles. The two worked together to dig two large holes, cut and level the posts, and poured the concrete to hold the posts in place. Come check out their hard work and visit the NEW Little Lending Library today!



## Farmer's commitment to the land

E F J T W X U T K B O Y W H L Y I O R E  
 T N X X Q O X N Z Y V A H H O Y O O Z Q  
 R I I I A U Z E S R E M R A F G T U A U  
 A M F B Y X G M H A R V E S T A S G L I  
 C P Y C M C U T Y L U I L F V W R I K P  
 N A T L N O R I Y H W G H E E I N V N M  
 I C A U T F C M N F S J L A C N B O H E  
 A T K N P I V M I K Z E T U O B I U H N  
 R C R D C H J O X B N H L V I T B Y V T  
 G O U A K C P C D I E T A E C E A U E X  
 C W Q L V U C B A R U T D U R A X E R A  
 X O I O T F F R I R I T D N V C R O P S  
 U L V B W I G F E O Z O R B A X B U E G  
 X P H E K C V D N F R X Q A C L I R F N  
 Z G D W O J Q A Q P L F Y J C F M T M G  
 E L T T A C N X T T R H Y S A T E R J M  
 N O I T A R E P O E N L N M P I O H A Z  
 G Z W B Z I N R G F Q A I O R X U R H F  
 P G V D C D G N U U J L L B A R Y G S K  
 S O Y B E A N S G W Y Z P P K N Z A Q G

- Agriculture
- Cattle
- Combine
- Commitment
- Corn
- Crops
- Cultivate
- Equipment
- Family
- Farmers
- Farmland
- Grain Cart
- Grain Elevator
- Harvest
- Hogs
- Impact
- Innovation
- Operation
- Plant
- Plow
- Production
- Soybeans
- Tractors
- Weather

Name \_\_\_\_\_  
 Address \_\_\_\_\_  
 City \_\_\_\_\_ State \_\_\_\_\_ Zip \_\_\_\_\_  
 Telephone (\_\_\_\_) \_\_\_\_\_ Email \_\_\_\_\_ Age \_\_\_\_\_

Return to: Kane County Farm Bureau, 2N710 Randall Road, St. Charles, IL 60174 by October 15, 2022 to be entered in our drawing for a fun prize.

Prize must be picked up at the KCFB office within one month of newspaper publication.

## JOKES

Why do trees like to try new things each year?  
*Because every autumn they turn over a new leaf!*

How do you fix a broken pumpkin?  
*With a pumpkin patch!*

Why do all the birds fly south in the fall?  
*Because it's too far to walk!*

What has ears but can't hear a thing?  
*A cornfield!*

### Happy Halloween!

### Congratulations

To Joan Devor of St. Charles, last month's word search winner. Her name was chosen from the entries received for correctly completing last month's Word Search puzzle. For her participation, she receives a fun prize. Thank you, Joan, for reading the Kane County Farmer, and continue to watch each month for more great opportunities from the Kane County Farm Bureau.

## October is ... National

Cinnamon Roll Day	4
Taco Day	4
Kale Day	5
Pumpkin Seed Day	5
Farmers Day	12
Pulled Pork Day	12
World Egg Day	14
Cheese Curd Day	15
Mushroom Day	15
Pasta Day	17
Mashed Potato Day	18
Apple Day	21
Food Day	24
Pumpkin Day	26
Oatmeal Day	29
Candy Corn Day	30
Halloween	31
Caramel Apple Day	31

### National

American Cheese Month
Breast Cancer Awareness Month
Eat Better, Eat Together Month
Apple Month
Book Month
Caramel Month
Chili Month
Pasta Month
Pizza Month
Pork Month
Pretzel Month
National 4-H Week, October 2-8, 2022



Throughout Grandpa's lifetime, he witnessed some of the most incredible advancements in agriculture. U.S. farm production tripled

with innovations in animal and crop genetics, chemicals and equipment that reduced environmental impact while improving productivity. As a youngster, Grandpa's family used horses to plow, plant and cultivate. By age 80, he operated a 500-horsepower tractor hands-free, guided by satellites. Until 85, Grandpa and I worked together during fall harvest, operating grain auger carts that took turns collecting grain from the combines and then filling the grain trucks. After school, the kids called dibs for a ride in the tractor with "Gramps" to enjoy both his company and the red licorice that Granny packed in his lunch box.

The week of Grandpa's death, my brother and I stopped to see him one morning before heading to the field. We talked about crops, cattle, the weather and my new roles with equipment operation on the farm. I choked to silence when his hands clenched mine at my departure. His palm, fingers and knuckles were as thick, stout and strong as any working hand could come.

"One thing I never got to do was ride with you in the tractor," he said.

He rides in my heart.

About the author: Joanie Stiers farms with her family in west-central Illinois, where they grow corn, soybeans, wheat, hay and cover crops and raise beef cattle, backyard chickens and farmkids.

**'Til Death Do Us Part**  
*Farmers share profound commitment to the land*

Grandpa expressed concern about three things when he left the hospital: Getting home to the farm. Making sure the yard was mowed. And checking that the crops were planted.

He died on May 21 in a makeshift bedroom in the farmhouse living room on the farm where he had raised crops, hogs, cattle and a family. The grass had been mowed, and we finished planting corn and soybeans 48 hours before his death.

This fall, we harvest the first crop without our "S-1," his call sign on our two-way radios. Rather, our family and employees remember him across the terraces at Ostroms, the timber-lined fields of the Hurlbutt farm, and the rich and flat black soils of the Billtown 80 field. We sense him in the calm, pre-dawn air as early as 4:30 a.m., when he witnessed the earth wake around him. And we see him in our pastures, where his cows' genetics live on in our farm's herd today.

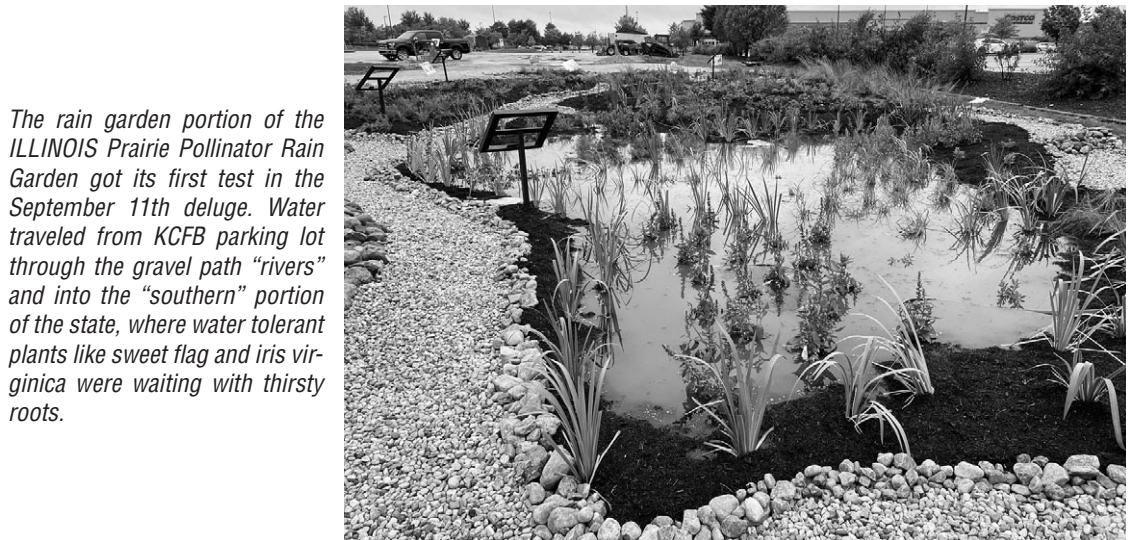
I cannot adequately express the powerful connection farmers have to the land – to take care of it until death do them part. The land intertwined with each of Grandpa's dying wishes. And while his body shut down, we determinedly fulfilled one wish while planting the same fields he had cared for during his career the previous half century.



**Scenes from the garden**

Left: KCFB staff members Jenna Rowe and Liz Polovin helped Steve Arnold hustle landscape fabric into place during planting of the ILLINOIS Prairie Pollinator Rain Garden.

Below: Volunteers at the ILLINOIS Prairie Pollinator Rain Garden planting also gave the planting bed under the KCFB sign on Randall Road a refresh, transplanting liatris and prairie grasses (prairie dropseed and little bluestem) around the sign. See more photos on page 8 and throughout this paper.



The rain garden portion of the ILLINOIS Prairie Pollinator Rain Garden got its first test in the September 11th deluge. Water traveled from KCFB parking lot through the gravel path "rivers" and into the "southern" portion of the state, where water tolerant plants like sweet flag and iris virginica were waiting with thirsty roots.

**Three local volunteers inducted into Illinois 4-H Hall of Fame**

Outstanding 4-H volunteers Jim McGuire of DuPage County, Doris Braddock of Kane County, and Mary Schobert of Kendall County were celebrated as part of the 2022 class of the Illinois 4-H Hall of Fame at an in-person ceremony during the 4-H General Project Show at the Illinois State Fair Aug. 14.

"Volunteers are the backbone of the 4-H program," said Leilah Siegel, 4-H Youth Development Educator with University of Illinois Extension. "We value our volunteers' continued support and dedication to our communities and programs. These fellow residents give selflessly to educate and inspire the next generation."

**DuPage County Honoree:**  
**Jim McGuire**

For Jim McGuire of Naperville, 4-H became part of his life following a visit with his young family to the DuPage County Fair years ago.

"He knew right away he wanted to get his own children involved in 4-H," said Siegel, referencing McGuire's nomination. "From that point on, Jim was 'all in,' doing everything he could to improve the fairgrounds, spending many unpaid hours personally completing projects there. Today, he continues to be an enthusiastic and reliable partner for DuPage County 4-H."

He served as president, treas-

urer, and fair board director for a dozen years, and he became the DuPage County Fair Manager in 2015. His passion is to provide a place for 4-H youth, community members, families, and all residents to gather and celebrate.

**Kane County Honoree:**  
**Doris Braddock**

Doris Braddock of St. Charles embraced 4-H at every stage of life – from being a member in Missouri to watching her children and grandchildren learn through Kane County 4-H. She also dedicated nearly 30 years of her career to 4-H, retiring from University of Illinois Extension in 2021.

"Over the years, Doris made a positive impact on thousands of lives – youth and volunteers alike," Siegel said. "She is always willing to dedicate her time and her talents to support 4-H, and she embodies the 4-H pledge of clearer thinking, greater loyalty, larger service, and better living."

She continues to volunteer for 4-H to help provide youth a place to belong, develop independence, practice generosity, and master skills.

**Kendall County Honoree:**  
**Mary Schobert**

As a 4-H alum, parent, grandparent, and volunteer, Mary Schobert of Yorkville knows firsthand the real life impacts 4-H can have on youth

and the life skills they develop through the program.

"Following her mother's example, Mary now leads her grandchildren in their 4-H club," said Siegel. "She values how 4-H provides leadership and exploration experiences, and she has seen how the program promotes growth and development across generations."

In addition to being a 4-H club leader, she serves as a 4-H show superintendent, county records judge, and workshop teacher. She also is a point person on the volunteer-led 4-H Foundation fundraising committee and 4-H livestock auction committee, of which she's served for 20 years.

These three tri-county volunteers were among 84 total individuals who were inducted into this year's Illinois 4-H Hall of Fame. The official announcement was made during a virtual ceremony May 20; however, the state fair recognition allows friends, family, and county staff to come together to celebrate their inductee. The ceremonies are held over a three-day period to match up with each county's exhibit days at the 4-H General Project Show.

The Illinois 4-H Foundation established the statewide Hall of Fame in 2005 to honor and celebrate extraordinary 4-H alumni, volunteers, and former 4-H staff.



**YOU could WIN this beautiful, 1971 Chevy C10 pickup truck in our October 13 raffle!**

**Vintage Truck Raffle**  
**KCFB Foundation**

Please send me \_\_\_\_\_ tickets (\$20 each, or 3 for \$50)

Name \_\_\_\_\_

Address \_\_\_\_\_

City, State, Zip \_\_\_\_\_

Email \_\_\_\_\_

Phone (\_\_\_\_\_) \_\_\_\_\_

Return with check made payable to Kane County Farm Bureau Foundation, 2N710 Randall Rd., St. Charles, IL 60174 or charge my:

Visa  MC # \_\_\_\_\_

Exp \_\_\_\_/\_\_\_\_/\_\_\_\_. CVC code \_\_\_\_\_

Signature \_\_\_\_\_

Date \_\_\_\_/\_\_\_\_/\_\_\_\_

**Good luck!**

## Pollinator support

(continued from page 1)

bags of Premium Hardwood Bark Mulch and 120 bags of Premium Hardwood Bark Fines. A significant discount was also provided on 40 cubic yards of Garden Mix. Midwest Groundcovers extended a discount on over 700 native plants used in the installation. The plants utilized in the design are from

Midwest Groundcovers' Natural Garden Natives® catalog, which are local eco-type (seed-sourced) from within 90 miles of St. Charles, Illinois.

Midwest Groundcovers was started along Rt. 25 in St. Charles, Illinois in 1969 by Peter Orum and his wife Irma. What started as 5 acres has now grown to over 700 acres spread across five nursery locations in Illinois and Michigan. Still

### Natural Garden Natives® included in the Kane County Farm Bureau Garden:

- Allium cernuum (Nodding Wild Onion)
- Asclepias incarnata (Rose (Swamp) Milkweed)
- Asclepias tuberosa (Butterfly Weed)
- Baptisia leucophaea (Cream Wild Indigo)
- Dalea purpurea (Purple Prairie Clover)
- Echinacea pallida (Pale Purple Coneflower)
- Geranium maculatum (Wild Geranium)
- Iris virginica var. shrevei (Blueflag Iris)
- Liatris aspera (Rough Blazing Star)
- Liatris spicata (Marsh Blazing Star)
- Lobelia siphilitica (Great Blue Lobelia)
- Monarda fistulosa (Wild Bergamot)
- Pycnanthemum virginianum (Common Mountain Mint)
- Schizachyrium scoparium (Little Bluestem)
- Solidago speciosa (Showy Goldenrod)
- Sporobolus heterolepis (Prairie Dropseed)
- Symph (Aster) novae-angliae (New England Aster)
- Tradescantia ohiensis (Common Spiderwort)
- Veronicastrum virginicum (Culver's Root)
- Zizia aurea (Golden Alexanders)

## What's new at COUNTRY?

### St. Charles Agency, Jeff Orman, Agency Manager

Congratulations to Gary Bolger, who has been named our August Rep of the Month in the COUNTRY Financial® St. Charles/Elgin Agency, as announced by Agency Manager, Jeffrey Orman. Gary is a great asset to our team and is dedicated to providing tangible plans for addressing the immediate and long term insurance needs of his clients through our Auto, Home, Farm, Life, Business, and Retirement products and services. Let Gary's expertise help you! You may reach Gary at 847-531-6110, or gary.bolger@CountryFinancial.com, or <https://representatives>.

[CountryFinancial.com/gary.bolger/](https://CountryFinancial.com/gary.bolger/). Congratulations, Gary!

### Aurora Agency, Alonzo Nevarez, Agency Manager

Ryan Mizgate, Financial Representative with the Aurora Agency, is our Financial Representative of the Month for August 2022. Ryan began his career with COUNTRY Financial in June of 2014 and services clients out of his office located at: 1161 Oak Street, North Aurora, 60542, (630) 907-9485. Ryan's professionalism, community involvement and vast knowledge of auto, home, life, commercial and financial products make him a great person to do business with. Congratulations, Ryan!

## Recruiter of the Month

Each month we honor the person who signs the most members into our organization. This month, the honor goes to Felipe Rocha! Felipe has been a COUNTRY Financial Representative since August, 2011. His office



Felipe Rocha

is located at 541 N. Lake Street, Aurora and may be reached at: 630-897-7746.

Thank you for your continued support of the Kane County Farm Bureau and congratulations on your success!

**CUSTOMER SERVICE-** 30-35 hours weekly, M-F. Applicant must be a computer literate, self-starter, with pleasant voice and manner, Some travel possible. Office located east side of St. Charles. We offer vacation pay, self-directed savings plan, and partial tuition reimbursement. Perfect position for stay-at-home-Mom or college student. Call Bob or Laurie at 630-377-7797 to arrange interview.

Want to buy vintage & used tools. Also, we do cleanouts. Call Chris: 630-550-7182

### FOR SALE

IH, C tractor, 2 row cult. Runs good, about 1950 2nd C tractor for parts. Best offer. Call Lynn: 847-464-5447

Toy tractors-IH-1586-A-AV-C, AC-G and JD-4420. Call Lynn: 847-464-5447

## KANE COUNTY FARMER

in the family, Christa Orum-Keller holds the reins as Chairman and President at Midwest Groundcovers and Chairman of Midwest Trading. Christa is passionate about native plants and has helped ensure they continue to thrive in the community by acquiring the 29-acre Midwest Natural Garden, located on the west side of St. Charles, in 2011.

A complete list of the Natural Garden Natives® used in the Bureau's Garden can be found in the Native News section of our website, [naturalgardennatives.com](https://naturalgardennatives.com).

The website has in-depth information about native plant communities and individual plant details. This is a great resource for both novice and expert gardeners who are looking to incorporate native plants into their own gardens. The "Where to Buy" section on the site lists local independent garden centers that sell Natural Garden Natives®.

In addition to donations and discounts, the Farm Bureau received grant money for the project from several sources. As the importance of pollinators

continues to become more readily understood, organizations are stepping up to help bring about change. For example, non-profits and education agencies are now eligible to apply for the Openlands ComEd Green Region Grant which awards up to \$10,000 for conservation projects based in Northern Illinois (<https://openlands.org/get-involved/greenregion/>)

We're excited to have been able to support this worthwhile community project and look forward to seeing it grow!

## Welcome to the next level

This month we welcome the following KCFB members who joined our organization or reclassified their membership in January to \*Regular or Professional Status:

### Regular Members

Mark Arneson	Hampshire
Prairie Fence & Landscape Co	Sugar Grove
Mike Barbic	Wayne

We remind you of added perks that accompany your new Regular member or Professional Status and thank you for support-

ing KCFB's efforts at advocacy, education and hunger relief:

- Professional networking opportunities & engagement with farmers
- Agriculture, farm & food news delivered to your door
- New subscription to FarmWeek, the largest weekly agriculture newspaper
- Access to FarmWeekNow.com
- KCFB voting rights & ILFB delegate opportunities
- Continuing subscription to the Kane County Farmer newspaper
- Free annual registration at one of 7 statewide conferences

- 302,000 member discounts, including Ford, Lincoln, John Deere, Case IH, restaurants, hotels & travel
- Discounts at the KCFB Country Store on in-house sales of featured local foods

\*KCFB Regular membership is required of all who join our association that have a vested interest in and receive income from the production of farm products as an owner or operator of a farm business. Professional Membership status is available for all those employed in agriculture-related occupations, even with no farm income. If you are interested in "next level" membership and the benefits it carries, please contact KCFB in St. Charles at (630) 584-8660.

## Thanks to our donors

The KCFB FOUNDATION offers its sincere appreciation to the following for their contributions to our hunger relief, community service, education, and scholarship programs. Names shown are contributions received August 15-September 16, 2022.



### Donor

Chris Arnold .....	KCFB Foundation
Deb Stob (in memory of Alvera McDonald) .....	KCFB Foundation
Micheal Wurtz .....	KCFB Foundation

### Beneficiary

We sincerely appreciate your willingness to help support agricultural education, scholarship, leadership training, and community youth education as well. We could not do it without your support!

## Save time and renew online

It's easy to make sure your Farm Bureau Membership is current. The Illinois Farm Bureau provides many services to all Kane County Farm Bureau members, for example, online membership renewal through their website.

Did you know you can renew your Farm Bureau membership online? You can also view your payment history, print a lost or updated membership card, and update your account information including address,

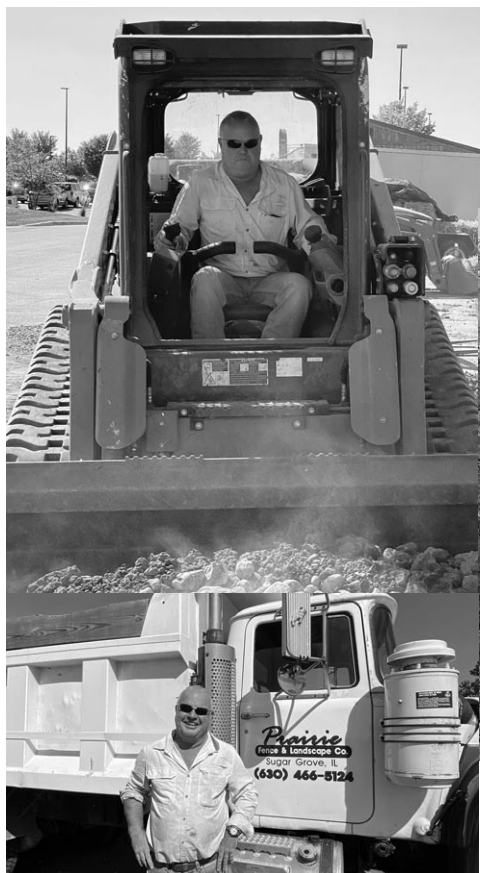
spouse/dependents, phone and e-mail all through the Member Center of the website.

To do this, simply visit [www.ilfb.org](http://www.ilfb.org). Click on the Membership tab at the top, and then Renew your membership. You will be asked to register using your Farm Bureau number and to create a username and password.

The ability to check your membership information anytime, anywhere can help prevent unwanted Farm Bureau mem-

bership late fees and keep you eligible for COUNTRY Mutual and COUNTRY Preferred insurance coverages. Don't delay, check to make sure your information is updated today!

REMINDER: Regular (voting) and Professional Members are due for renewal in September. Associate members' renewal dates vary, please sign on to the website or call the Kane County Farm Bureau at (630) 584-8660 to check on the status of your membership.



Work on the ILLINOIS Prairie Pollinator Rain Garden started Thursday, September 1st and continued on Friday, September 2nd including mulching, watering and filling the riverbed walking paths with gravel and lining the banks with cobbles. Scott Jessemann of Prairie Fence and Landscape donated the cobbles, labor and trucking and hauled excess materials off site.



See more photos and garden thank you's on page 8.

## CLASSIFIED ADS

### CLASSIFIED AD RATES

Classified advertising rates: 20 cents per word/\$20 minimum (60 words or less). DISCOUNTS for members: Associate members, 20%; Voting members, 30%; PLUS members, 40%. Advance payment requested. Ads due by the 15th of every month for the next issue. No advertising (classified or display) for financial or insurance services will be accepted. Call 630-584-8660.

### WANTED

JACK OR JILL OF ALL TRADES NEEDED to assemble wood plaques and awards. Prefer 20 to 30 hours weekly; no weekends. Great for retiree or part-time student. Office located East side of St. Charles. Call Bob: 630-377-7797

# The ILLINOIS Prairie Pollinator Rain Garden

1. The IPPRG planting event started Thursday, September 1st at 9:00 am with a greeting from Steve Arnold, KCFB Manager to the 75 or so volunteers ready and eager to start planting.

2. Volunteers dug in, grabbing plants and shovels and following the planting chart and guidance from Encap Inc's Jonathan Koepke and Melissa Wheeler, the designers of the garden. Participants worked from "southern Illinois" to "northern Illinois", installing over 950 plants in two hours. Here a group plants *Geranium maculatum* just north of "St. Louis."

3. After planting, watering is vital. Volunteers were quick to jump in, filling watering cans, jugs and buckets and hand watering the newly planted perennials.

4. Some folks took a little time out for fun, posing for photo ops against a sunflower backdrop.

5. This mom and daughter teamed up to plant coneflowers in "central Illinois".

6. Representatives from the Kane-DuPage Soil & Water Conservation District, University of Illinois Extension, Forest Preserve District of Kane County and the Conservation Foundation were on hand to talk to folks about conservation, natural plantings, "pocket pollinator gardens", local programming and much more.

7. An aerial view of the garden was captured by Patrick McPartlan of the Kane-DuPage SWCD on September 9, after the area around the garden was reseeded and blanketed.



See more garden photos throughout this paper.



## Thanks to our ILLINOIS Prairie Pollinator Rain Garden Volunteers!

Over 170 volunteers responded to KCFB's call for volunteers through this and other publications, our website, radio interviews and social media platforms, and helped install our ILLINOIS Prairie Pollinator Rain Garden on September 1 & 2. The result is nothing short of incredible, and we can't wait to see the garden continue to grow, and to invite these volunteers back for learning opportunities, ongoing maintenance and perhaps eventually, seed sharing.

KCFB has developed an email list of the volunteer who assisted. Most should have received a note of Thanks via email, but we wish to publicly thank them here for their time, talents and efforts to make ours a better world. We couldn't have done it without YOU.

With our apologies to anyone we might have missed (it was a bit crowded in the garden), our THANKS to:

Janene Albrecht  
Monica Alexander  
Paula Altekruise  
Anne Anderson  
Gladys Arnold  
Steven Arnold  
Aimee Baker  
Abby Beck  
Cindy Benschoff  
Melissa Bernasek  
Charlene Bonsch  
Craig Bradley  
Diane Brown  
Debbie Carr  
Chris Collins  
Donna Cordero  
Wendy Cote  
Angela Cudmore  
Patricia Del Giuduce  
Janet Dellorto  
Maureen Dixon  
April Duda  
Jean Eakins  
Keith Eakins  
Lisa Eakins  
Kathleen Elstron  
Katie England  
Mary England  
Valarie Erikson  
Andrea Farrier  
Richard Foster  
Irene Frederick  
Roni Galloway  
Jessica Garcia  
Kathy Gardner  
Beth Gehrke

Wayne Gehrke  
Patricia Gibbons  
Sandra Gould  
Jamie Grinthal  
Jean Hefferman  
Bob Herrmann  
Anne Herrmann  
Terri Hoehne  
Shari Hohl  
Martha Jennings  
Scott Jesseman  
Kimberly Johnson  
Kathleen Judy  
Ben Katzen  
Quinn Kennedy  
Michael Kenyon  
Brendan King  
Jonathan Koepke  
Mike Kuhr  
Ginger Kurtz  
Drake Laculamita  
Andrew Lenkaitis  
Linda Lood  
Alice Macha  
Kathy Malinaski  
Ethel Marvitz  
Kathleen McDonald  
Jean McGowan  
Katie Mcnamara  
Laurie Metanechuk  
Monica Meyers  
Suzanne Meyers  
Jessica Mino  
Becky Monreal  
Ann Mountz  
Mary Murphy

Suzi Myers  
Lisa O'Brien  
Beth Pappas  
Terri Parmely  
Raelyn Parmely  
Wendall Peterson  
Rhonda Peterson  
Marie Pierce  
Dale Pitstick  
Bruce Plumb  
Rick Poulton  
Deb Rees  
Ray Rees  
Jennifer Ress  
Dana Rigertas  
Nikki Schafer  
Stan Schumacher  
Lindsay Schumaier  
Glenda Sherwood  
Maggie Soliz  
Felicia Speranske  
Shannon Sterling  
Deb Stob  
Danielle Stojan  
Ed Stuehm  
Josh Suliman  
Greg Swedberg  
Susan Swing  
Olesya Trufyn  
Kristine Ulbrieh  
Carla Vanderloop  
Melissa Wheeler  
Joe White  
Joseph White  
Megan Wiswesser  
Laura Zuzuly

KCFB will send occasional email updates, photos, videos and additional garden opportunities as they present themselves to all those above through a Constant Contact email. If you would like to be added to the email list, please call Liz Polovin at KCFB, 630-584-8660 or email her at [member@kanecfb.com](mailto:member@kanecfb.com) with the subject "garden".

## Above & Beyond

A special thanks this month also to those who demonstrated their commitment to the Kane County Farm Bureau and to furthering its mission, and went above and beyond in helping us to meet our goals and objectives by their acts and deeds:

To Mike Meuer for volunteering to undertake the design building and installation of our new, barn shaped Little Lending Library, at his own expense of time, labor and materials!

To Joseph White and Wayne Gehrke for assisting in the site preparation and installation of the same.

To Roc-Pit Equipment, Dale Pitstick and Scott Rocha, for donating the use of their John Deere compact tractor, loader and rotary tiller, for Farm Bureau's use in installing the ILLINOIS Prairie Pollinator Rain Garden.

To Lenkaitis Holsteins, Andy & Sarah Lenkaitis for lending their Dingo mini-skid loader for the same.

To Scott Jesseman, Prairie Fence and Landscape for the donation of cobble for the river/walking paths for the garden, and for hauling off-site broken concrete, clay and truckloads of excess materials.

To The Pumpkin Wagon, Wayne Gehrke and Carolyn Brummel for the donation of field stones to line the river paths in the garden, and Mike Kenyon for hauling them to our site.

To Ryan White, for making the receptacles for custom interpretative signs to line the garden paths.

To Stan Schumacher and Midwest Groundcovers/Midwest Trading. Midwest Trading donated 180 bags of Premium Hardwood Bark Mulch and 120 bags of Premium Hardwood Bark Fines to our ILLINOIS Prairie Pollinator Rain Garden project. A significant discount was also provided on 40 cubic yards of Garden Mix. Midwest Groundcovers extended a discount on over 700 native plants used in the installation.

To Jonathan Koepke, builder and Melissa Wheeler, designer of our ILLINOIS Prairie Pollinator Rain Garden, and to Encap Inc. for the STEEP discount on the construction and installation costs.

And to Debra Leingang, for reading the *Kane County Farmer* closely, and delivering 12 feet of barbed wire so we can hang a vintage paperboard Kane County Fair sign donated last month by Doloris Gronemann.