



Kane County Farm Bureau FOUNDATION

for the future of farms & food

2015 Report to Donors & Contributors

College Scholarships

Foundation General Scholarships

Awarded to students of KCFB members pursuing higher education for degrees and careers in agricultural fields of study. Recipients receive a minimum of \$1,000. This year 22 students received this award.



President's Scholarship

Recognizes the most outstanding local high school seniors seeking higher education in an agricultural field of study. The 2014-15 award of \$1,500 went to **Allison Steininger of Sugar Grove.**



Chuck Swanson Memorial Scholarship

Erik Turk of Elburn was named the recipient of this award, established by the family & friends of former Farm Bureau Director and long-time volunteer, Chuck Swanson. It provides a \$1,250 award for a student residing in Kane County pursuing a degree in an ag related career field.

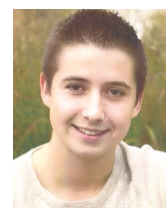


Mary L. Heckel Blicke Memorial Scholarship (\$1,000 minimum) In her memory & to support young people's agricultural aspirations, provides one award for a student residing in Kane or Macon County, Ill. pursuing a degree in an agriculture related career field. The first-ever recipient was **Alexandra Ruwe of Maroa in Macon County.**



John Buck Memorial Scholarship

Three students, **Erik Dunteman** of Big Rock, **Travis Hughes** of Genoa, and **Jonathan Mingl** of Maple Park were chosen to receive this \$1,000 award offered to students in the 8 county Buck Bros./J.W. Turf service area. It was established in 2001 by an endowment in memory of Buck Bros. Inc. founder John Buck by friends & family of the late John Deere dealer.



Food for Tomorrow

FOOD FORWARD

Kane County Farm Bureau FOUNDATION

A NEW initiative to raise funds for classroom education about food and farming & to provide college scholarships for local students studying for careers in agriculture. We call it FOOD>Forward. There will be 2 billion more people to feed globally by 2050. Statistics show a gap of 25,000 college grads annually for jobs in agriculture related fields.

The best way to meet the global food challenge is for farming, agriculture and food policy to attract and retain the best minds. Support of FOOD>Forward funds classroom outreach, getting kids excited about the industry and teaching them how their food is raised. It also provides dozens of annual college scholarships for students in ag majors.



Food for Today

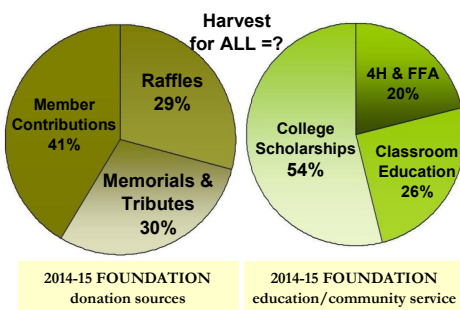
HARVEST FOR ALL

KCFB was awarded the **Service Club Philanthropic Award** from the West

Suburban Philanthropic Network for hunger relief efforts, including Harvest for ALL, administered by the Foundation. WSPN honors individuals and organizations committed to philanthropy in our west suburban communities and beyond. meals, or 36 thousand weeks' worth of food, in cumulative hunger relief. That total continues to grow.



FOUNDATION Funding



Raffle Fundraisers

The **Winner's Choice Tractor Raffle** is the Foundation's biggest fundraiser. In 2014, the raffle gave our supporters a chance at winning one of four prizes. The grand prize winner got their choice of grand prizes, a 1954 Farmall Super MTA, a John Deere



riding mower or \$2,500 cash. Other

The Kane County Farm Bureau Foundation is an IRS 501(c)(3) charitable organization that supports education, leadership development, research & charitable activities for the benefit of agriculture and farm families.



SPROUTS

During SPROUTS (Spring Program of Reading Outreach to Urban Teachers & Students), volunteers visit classrooms to read a farm-themed book, *Heartland*, to third graders and explain how farmers grow the world's food, fuel & fiber. A copy of the book *Seeds, Soil, Sun* was donated to each classroom. SPROUTS is supported through a memorial fund in honor of Bob Konen, established by his family and friends.



Summer Ag Institutes

The Foundation provides support for KCFB Summer Ag Institutes & Agricultural Tours for teachers. SAI1 is a one-week graduate credit course on ag research, inputs, production, and marketing. It provides a broad overview of



Kane County farms and agribusiness. SAI2 takes teachers outside the county to explore the ag industry,

focusing on themes like feeding the world and renewable energy.

Memorials & Tributes

Whether to remember a loved one, celebrate a family's agricultural heritage, or simply show support of Farm Bureau and the Foundation, **Centennial**

Grove, a grove of hardwood trees on the Farm Bureau property, offers a fitting & permanent

public venue. A commemorative tree sculpture and sign were added in 2013 to be viewed by Farm Bureau visitors for generations.



Foundation Memorials have been established by the family and friends of several Farm Bureau Members upon the passing of a loved one. Funds may be earmarked by contributors to benefit specific Foundation programs/scholarships.



Mary L.
Heckel-Blicke

Scholarship Spotlight

Q:
A:

Q:
A:

Q:
A:



Alex Klein
Scholarship Recipient 2012
College:
Major:
Occupation:

FFA Chapter Grants

FFA Chapter Grants recognize the contributions of Kane County FFA Chapters in the success of Foundation programs. In 2013, three Kane County Chapters capitalized on the grant, receiving a total of \$1,500 for participation in KCFB activities.



Touch-A-Tractor

This annual community service event offers the public a unique look at the machines that farmers use to grow the world's food. Activities at the 9th Annual Touch-A-Tractor at the Farm Bureau included tractors, family fun & interactive activities for the kids.



Ag Days

This year our largest ag education program celebrated its 30th anniversary. More than 1,500 fourth graders and teachers from urban and suburban schools learn about farming through a series of 5-minute presentations from



'FUN'draising

John Buck Memorial Golf Outing

Established in 2001 by an endowment in memory of the late John Deere dealer, the proceeds raised from this annual benefit fund John Buck Memorial Scholarships, administered by the Foundation.

Kane County Fair Country Store

The Fair provides the opportunity to raise funds and friends by the sale of farm-themed items. Buck Bros, Inc. of Hampshire cooperate in this effort, allowing the Foundation to sell farm toys & ag-themed items.

Bucket Raffles

The Foundation holds an annual Bucket Raffle at the County Fair. Local businesses donate items & gift certificates & fairgoers buy raffle tickets to place in the bucket of the prize they hope to win.



For the Future of Food

YES! I'd like to support the future of farms & food with this donation to FOOD>Forward in the amount of:

\$25 \$50 \$75 \$100 \$ ____ (Other - Surprise us!)

Please make this a recurring monthly gift (Your credit card will be billed this amount each month)

Name _____

Address _____

City _____ State _____ Zip _____

Phone (____) _____ Email _____

Enclosed is my donation of \$ _____

Please charge my donation of to my:
VISA MC AM EX Discover

Name (as it appears on card) _____

Card Number _____

Exp: ____ / ____ Security Code _____

Signature _____

Kane County Farm Bureau FOUNDATION
2N710 Randall Rd, St. Charles, IL 60174
By phone at 630-584-8660